

Danger from dry slabs, esp. at high altitudes

	Osterhorngruppe, Gamsfeldgruppe, Dientner Grasberge, Pongauer Grasberge, Kitzbüheler Alpen, Glemmtal, Chiemgauer Alpen, Heutal, Reiteralpe, Untersbergstock		
	Nockberge		
	2200 m Tennengebirge, Gosaukamm, Steinernes Meer, Hochkönig, Hagengebirge, Göllstock, Niedere Tauern Alpenhauptkamm, Niedere Tauern Nord, Niedere Tauern Süd, Ankogelgruppe, Muhr, Loferer und Leoganger Steinberge		
	2200 m Oberpinzgauer Grasberge, Großvenedigergruppe Nord, Großvenedigergruppe Alpenhauptkamm, Glocknergruppe Nord, Glocknergruppe Alpenhauptkamm, Goldberggruppe Nord, Goldberggruppe Alpenhauptkamm		

Avalanche problems



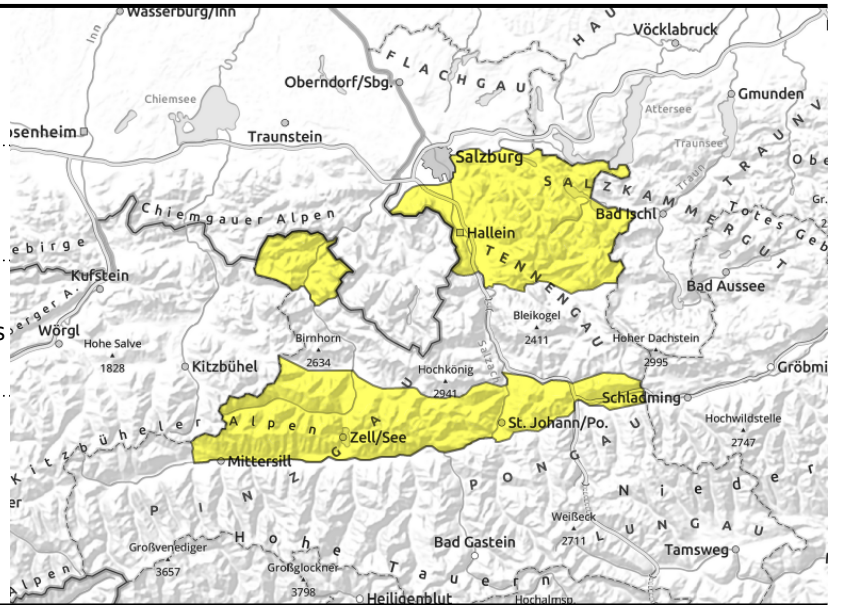
Danger ratings



Expositions



**Osterhorngruppe, Gamsfeldgruppe, Dientner
 Grasberge, Pongauer Grasberge, Kitzbüheler Alpen,
 Glemmtal, Chiemgauer Alpen, Heutal, Reiteralpe,
 Untersbergstock**



near ridges, behind
 discontinuities, in gullies, bowls
 above timberline



on extremely steep grass-
 covered slopes

Beware freshly generated snowdrifts above timberline

Avalanche danger is MODERATE. Fresh snowdrifts on NW/E/S facing slopes can be triggered by 1 person and reach medium size. Also in gullies in other aspects the drifts are trigger-prone. At low and intermediate altitudes, in addition, small wet loose-snow avalanches are expected, either triggering naturally or artificially. Latent danger of small-to-medium glide-snow avalanches persists.

Snowpack structure

Lots of snowfall at variable temperatures, often accompanied by stormy W/NW winds, bonding of latest snow (10-20 cm, also 30 cm west of Dientner Grassy Mountains) is good but deteriorates with ascending altitude. Weak layer for a slab: a soft layer of faceted crystals beneath a near-surface crust in the old snow (rain-ice crust or wind crust or melt-freeze crust) but fractures inside the freshly generated drifts are also possible. Lower temperatures are helping the moist snowpack to regain its firmness. Reinforced gliding is being observed on steep grass-covered slopes.

Weather

Overnight, widespread snowfall (5-10 cm), the snowfall level ascending from 1000 to 1300 m. On Friday, heavy cloud, reduced visibility, few bright intervals. Rainfall/snowfall from Osterhorn Massif to Pongau Grassy Mountains in the morning, snowfall level 1300-1600 m, then terminating. Moderate westerly winds. At 1500 m: 0 to 3 degrees; at 2000 m: -1 degree.

Outlook

On Saturday, naturally triggered avalanches (loose snow) on sun-drenched steep slopes. The likelihood of triggering will decrease.

Avalanche problems



Danger ratings



Expositions



Nockberge



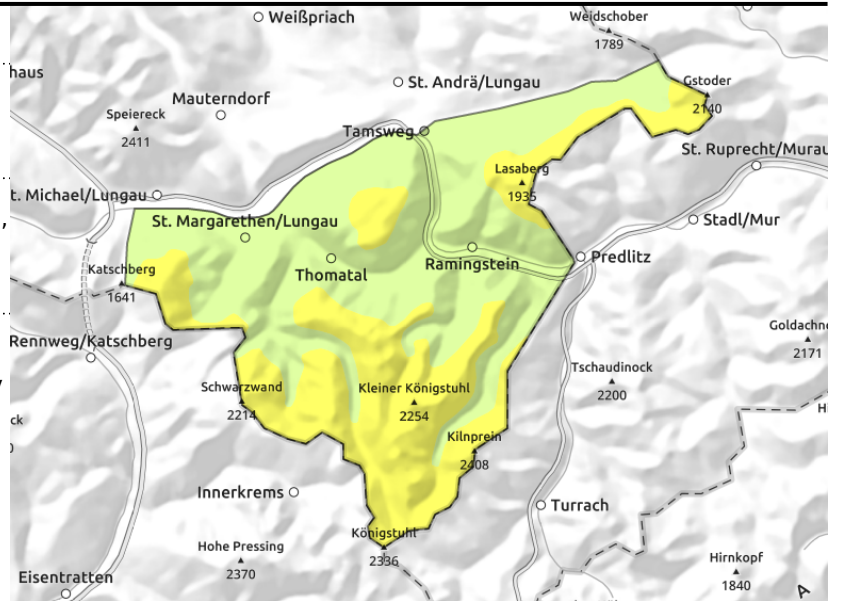
forestline



near to and distant from ridges, behind discontinuities, in gullies, steep bowls



on extremely steep grass-covered slopes, possible at any time of day



Pay heed to danger zones due to snowdrifts

Avalanche danger is moderate above the treeline, below that altitude danger is low.

Fresh and older snowdrift accumulations can be triggered by 1 person in some places on NW/N/E/S facing slopes and release a slab, usually small sized, sometimes medium.

Glide-snow avalanches are still a threat where snow is sufficient, most releases remain small but where snow is sufficient isolated large-sized releases are possible. Avoid zones below glide cracks.

Snowpack structure

Amid heavy wind impact from the north, there was 10-20 cm of fresh snow registered widespread, bonding mostly good. Fractures possible both in the blanketed fresh snow and in a soft layer beneath the most recent melt-freeze crust snow (rain-ice crust or wind crust or melt-freeze crust).

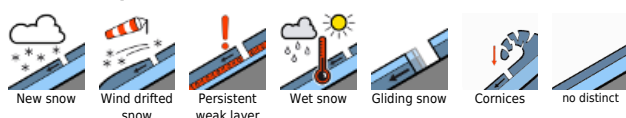
Weather

Overnight, minor snowfall (5-10 cm), light rainfall below 1400 m. On Friday, heavy cloud, reduced visibility, few bright intervals. Moderate westerly winds, no precipitation. At 2000 m: -1 degree.

Outlook

On Saturday, a persistent snowdrift problem

Avalanche problems



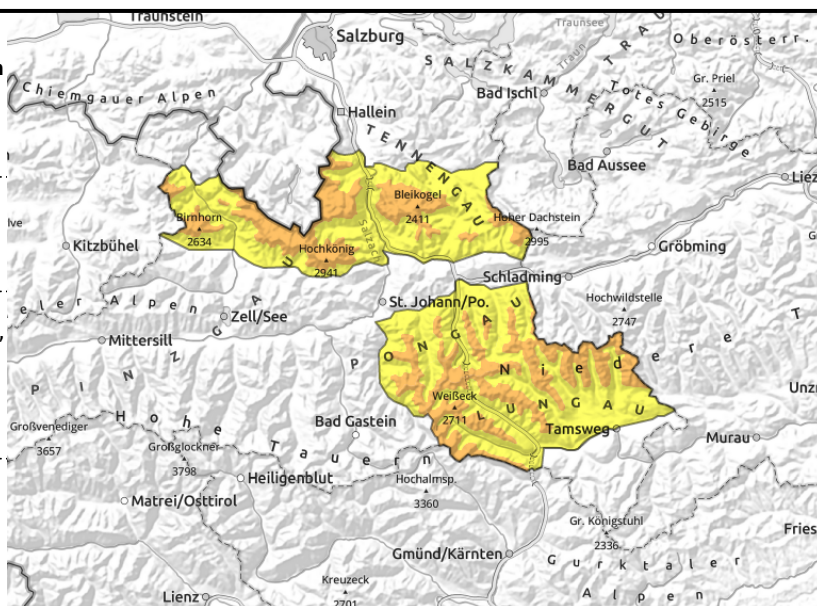
Danger ratings







Expositions



Tennengebirge, Gosaukamm, Steinernes Meer, Hochkönig, Hagengebirge, Göllstock, Niedere Tauern Alpenhauptkamm, Niedere Tauern Nord, Niedere Tauern Süd, Ankogelgruppe, Muhr, Loferer und Leoganger Steinberge



  near to and distant from ridges, behind discontinuities, in gullies, steep bowls, far-reaching drifts

  in extremely steep grass-covered terrain, isolated large avalanches possible

Fresh snow + wind impact

Avalanche danger above 2200 m is **CONSIDERABLE**, below that altitude danger is moderate. The fresh snowdrifts can in many places on NW/N/E facing slopes be triggered as medium-sized avalanches even by 1 person. Danger zones swiftly increase with ascending altitude both in frequency and in size, occur mostly behind discontinuities (also distant from ridges) and in steep gullies and bowls. Poor visibility makes it more difficult to assess the risks. In addition, the danger of naturally triggered glide-snow avalanches persists below 2600 m. Isolated large-sized avalanches are possible in higher-altitude starting zones.

Snowpack structure

Lots of snowfall at variable temperatures, often accompanied by stormy W/NW winds, bonding of latest snow (10-20 cm, also 30 cm west of Dientner Grassy Mountains) is good but deteriorates with ascending altitude. Weak layer for a slab: a soft layer of faceted crystals beneath a near-surface crust in the old snow (rain-ice crust or wind crust or melt-freeze crust) but fractures inside the freshly generated drifts are also possible. Lower temperatures are helping the moist snowpack to regain its firmness. Reinforced gliding is being observed on steep grass-covered slopes.

Weather

Overnight, widespread snowfall (5-10 cm), the snowfall level ascending from 1000 to 1300 m. On Friday, heavy cloud, reduced visibility, few bright intervals. Rainfall/snowfall from Tennen Gebirge to Niedere Tauern in the morning, snowfall level 1300-1600 m, then terminating. Moderate westerly winds. At 1500 m: 0 to 3 degrees; at 2000 m: -1 degree, at 3000 m: -6 degrees.

Outlook

On Saturday, naturally triggered avalanches (loose snow) on sun-drenched steep slopes. Persistent snowdrift problem in high-alpine areas.

Avalanche problems



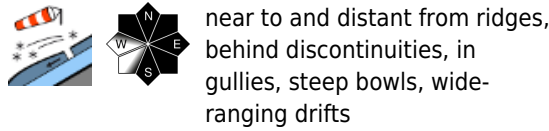
Danger ratings



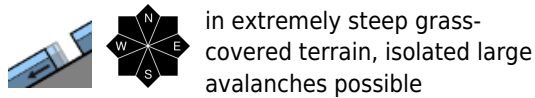
Expositions



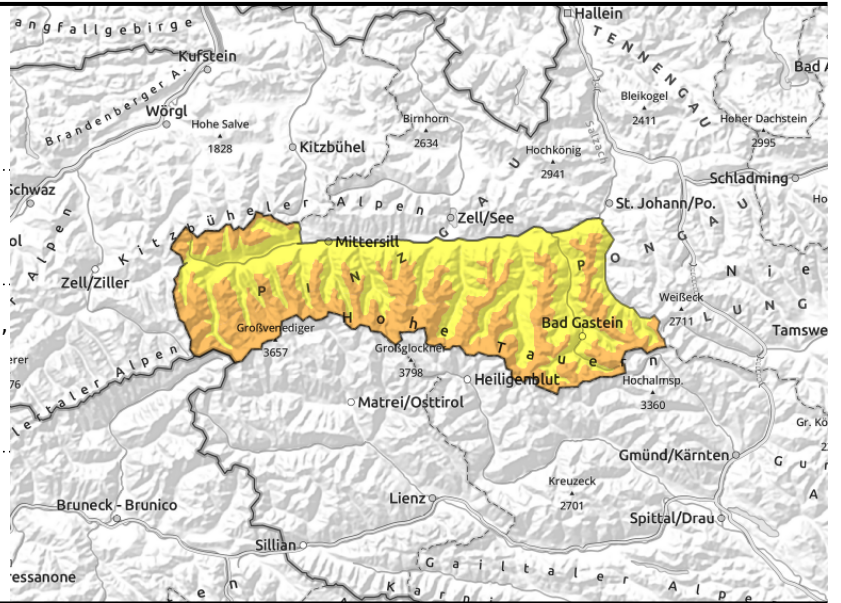
Oberpinzgauer Grasberge, Großvenedigergruppe Nord, Großvenedigergruppe Alpenhauptkamm, Glocknergruppe Nord, Glocknergruppe Alpenhauptkamm, Goldberggruppe Nord, Goldberggruppe Alpenhauptkamm



near to and distant from ridges, behind discontinuities, in gullies, steep bowls, wide-ranging drifts



in extremely steep grass-covered terrain, isolated large avalanches possible



Heavy snowfall plus wind impact

Avalanche danger above 2200 m is **CONSIDERABLE**, below that altitude danger is moderate. The fresh snowdrifts can in many places on NW/N/E/S facing slopes be triggered as medium-sized avalanches even by 1 person. Danger zones swiftly increase with ascending altitude both in frequency and in size, occur mostly behind discontinuities (also distant from ridges) and in steep gullies and bowls. Poor visibility makes it more difficult to assess the risks. In addition, the danger of naturally triggered glide-snow avalanches persists below 2600 m. Isolated large-sized avalanches are possible in higher-altitude starting zones.

Snowpack structure

Lots of snowfall at variable temperatures, often accompanied by stormy W/NW winds, bonding of latest snow (30-50 cm, also 70 cm in the Tauern) is good but deteriorates with ascending altitude. Weak layer for a slab: a soft layer of faceted crystals beneath a near-surface crust in the old snow (rain-ice crust or wind crust or melt-freeze crust) but fractures inside the freshly generated drifts are also possible. Lower temperatures are helping the moist snowpack to regain its firmness. Reinforced gliding is being observed on steep grass-covered slopes.

Weather

Overnight, widespread snowfall (5-10 cm), the snowfall level ascending from 1000 to 1300 m. At high altitudes, esp. on Main Tauern Ridge, stormy-strength NW winds. On Friday, heavy cloud, reduced visibility, few bright intervals. Mostly dry. Moderate westerly winds. At 1500 m: 0 to 3 degrees; at 2000 m: -1 degree, at 3000 m: -6 degrees.

Outlook

On Saturday, naturally triggered avalanches (loose snow) on sun-drenched steep slopes. Persistent snowdrift problem in high-alpine areas.

Translated by Jeffrey McCabe, www.creativtrans.com

Avalanche problems



Danger ratings



Expositions

