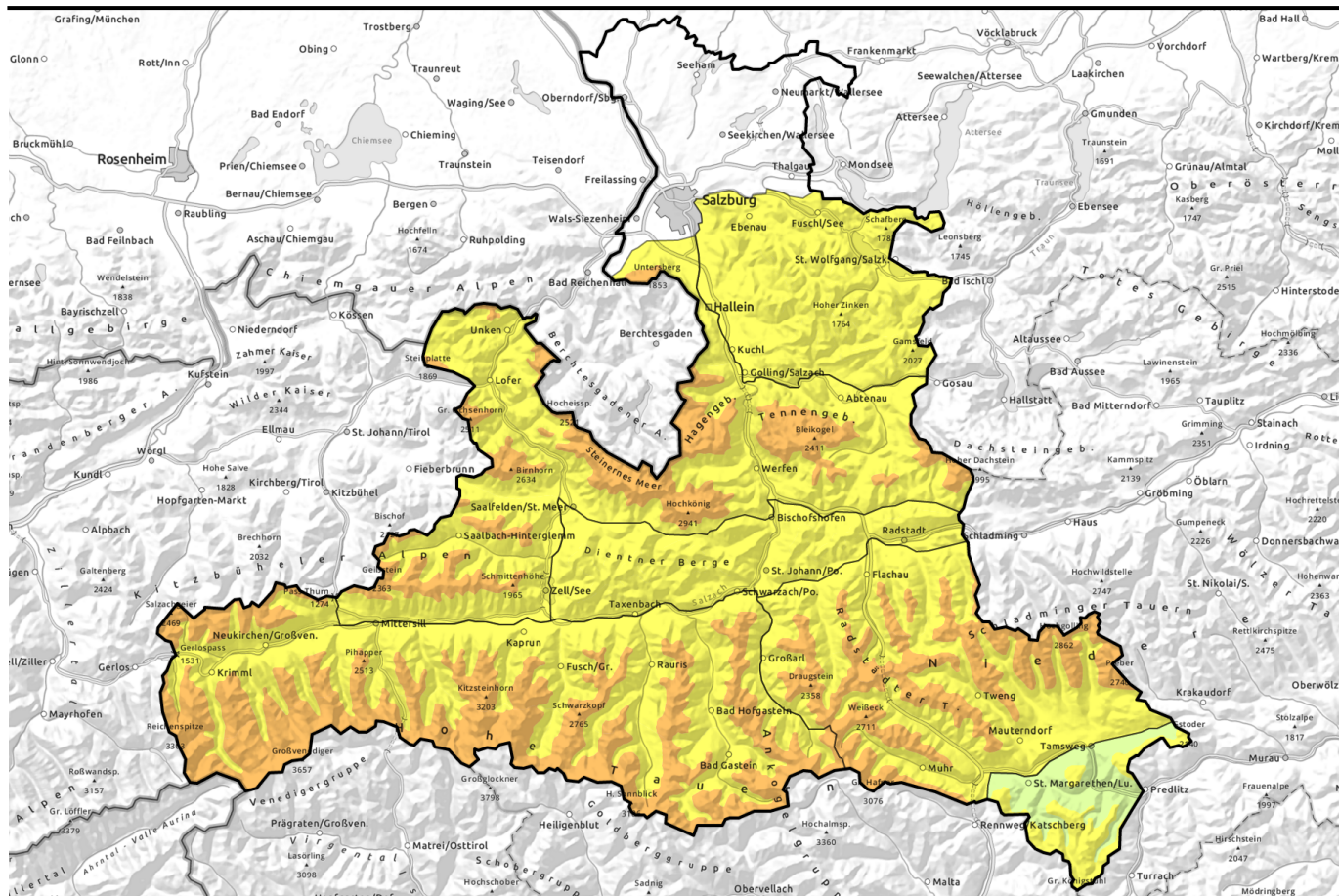


valid until: **Thursday, 25.01.2024, 18:00 h**



Storm winds, heavy cold snowfall

	Osterhorngruppe, Gamsfeldgruppe, Dientner Grasberge, Pongauer Grasberge			
	forestline Nockberge			
	2200 m Tennengebirge, Gosaukamm, Steinernes Meer, Hochkönig, Hagengebirge, Göllstock, Loferer und Leoganger Steinberge, Niedere Tauern Alpenhauptkamm, Niedere Tauern Nord, Chiemgauer Alpen, Heutal, Reiteralpe, Untersbergstock, Niedere Tauern Süd, Ankogelgruppe, Muhr, Kitzbüheler Alpen, Glemmtal			
	2200 m Oberpinzgauer Grasberge, Großvenedigergruppe Nord, Großvenedigergruppe Alpenhauptkamm, Glocknergruppe Nord, Glocknergruppe Alpenhauptkamm, Goldberggruppe Nord, Goldberggruppe Alpenhauptkamm			

Avalanche problems



Danger ratings



Expositions



valid until: **Thursday, 25.01.2024, 18:00 h**

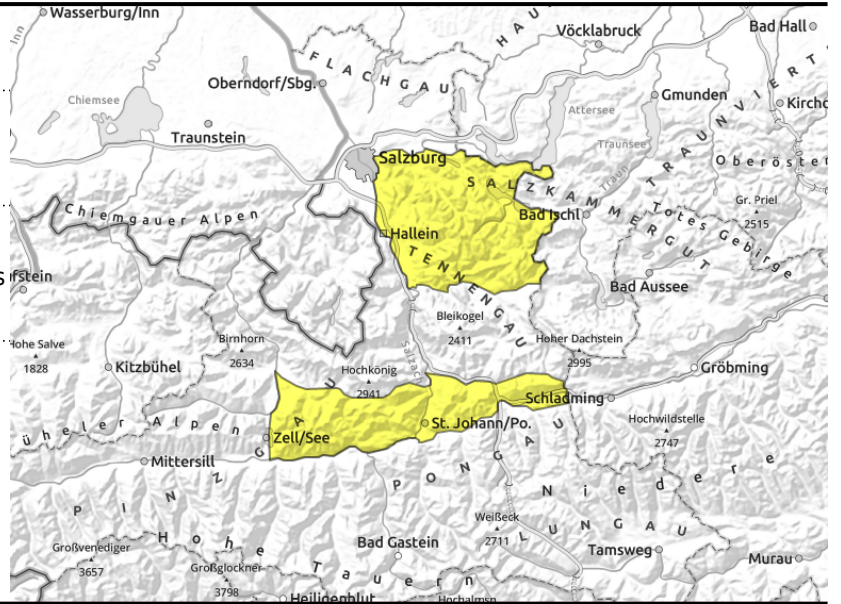
**Osterhorngruppe, Gamsfeldgruppe, Dientner
Grasberge, Pongauer Grasberge**



near ridges, behind discontinuities, in gullies, bowls of all aspects above treeline



on extremely steep grass-covered slopes



Freshly generated snowdrifts prone to triggering above timberline

Avalanche danger is MODERATE. Fresh snowdrifts on NW/N/S facing slopes can be triggered by 1 person and reach medium size. Also in gullies in other aspects the drifts are trigger-prone. At low and intermediate altitudes, in addition, small wet loose-snow avalanches are expected, either triggering naturally or artificially. Latent danger of small-to-medium glide-snow avalanches persists.

Snowpack structure

On top of the snowfall at the start of the week, an additional 10-20 cm of fresh snow is expected amid heavy wind impact from W/N. The base is moistened due to rainfall and higher temperatures. Weak layer for a slab is a soft layer of faceted crystals beneath a near-surface crust in the old snow (rain-ice crust or wind crust or melt-freeze crust) but fractures inside the freshly generated drifts are also possible. Lower temperatures are helping the moist snowpack to regain its firmness. Reinforced gliding is being observed on steep grass-covered slopes.

Weather

Overnight there will be snowfall accompanied by strong-to-stormy W/NW winds, the snowfall level dropping from 1700 down to 1000 m. At 1500 m: +2 degrees; at 2000 m: -1 degree.

On Thursday the peaks will be shrouded in clouds, reduced visibility, frequent snowfall (often heavy), but also interims. At 1500 m: -1 degree; at 2000 m: -2 degrees. The W/NW winds will be blowing at 40-60 km/hr.

Outlook

On Friday, the next warm front will pass through bringing heavy precipitation. Wet snow problem at low and intermediate altitudes, a treacherous slab situation at high altitudes.

Avalanche problems



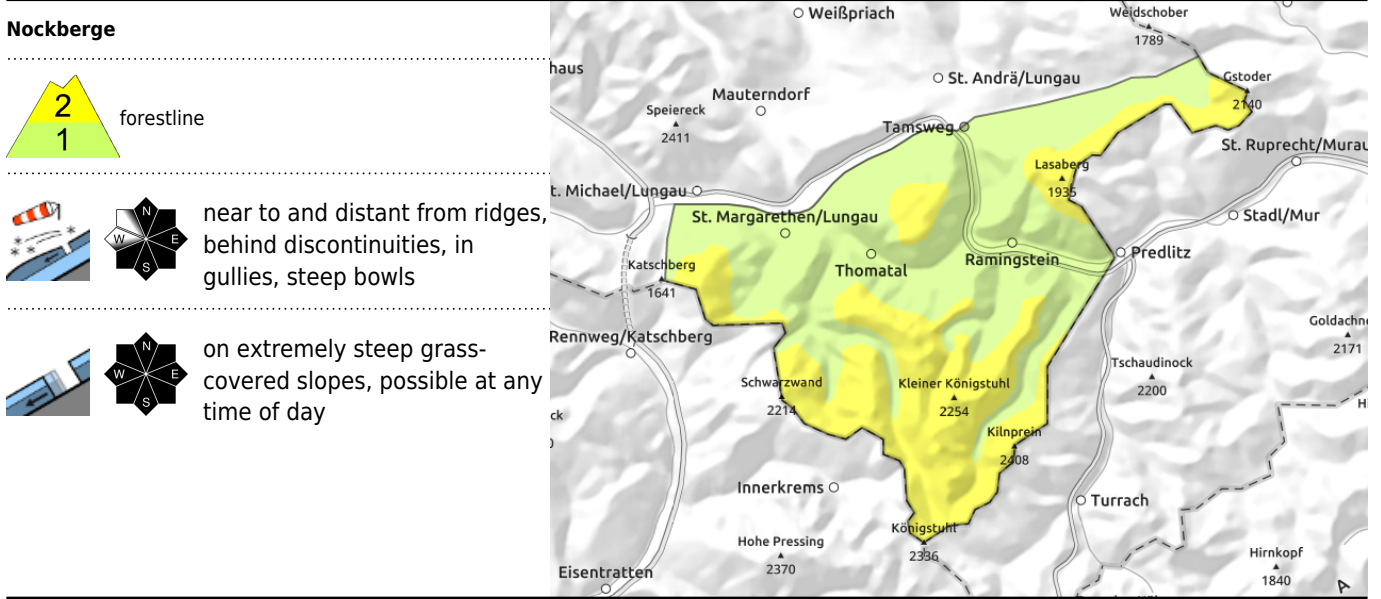
Danger ratings



Expositions



valid until: **Thursday, 25.01.2024, 18:00 h**



Pay heed to danger zones due to snowdrifts

Avalanche danger is MODERATE above the treeline, below that altitude danger is low. Fresh and older snowdrift accumulations can be triggered by 1 person in some places on NW/N/E/S facing slopes and release a slab, usually small sized, sometimes medium. Glide-snow avalanches are still a threat where snow is sufficient, most releases remain small. Avoid zones below glide cracks.

Snowpack structure

Atop a moistened snowpack, 10-20 cm of cold fresh snow is expected. The NW winds will transport it far-reachingly, generate new snowdrift accumulations. Fractures are possible both in the blanketed fresh snow and in a soft layer beneath the most recent melt-freeze crust snow (rain-ice crust or wind crust or melt-freeze crust).

Weather

Overnight there will be snowfall accompanied by strong-to-stormy W/NW winds, the snowfall level dropping from 1700 down to 1000 m. At 1500 m: +2 degrees; at 2000 m: -1 degree. On Thursday the peaks will be shrouded in clouds, reduced visibility, frequent snowfall (often heavy), but also interims. At 1500 m: -1 degree; at 2000 m: -2 degrees. The W/NW winds will reach 90 km/hr.

Outlook

On Friday, the next warm front will pass through bringing heavy precipitation. Wet snow problem at low and intermediate altitudes, a treacherous slab situation at high altitudes.

Avalanche problems

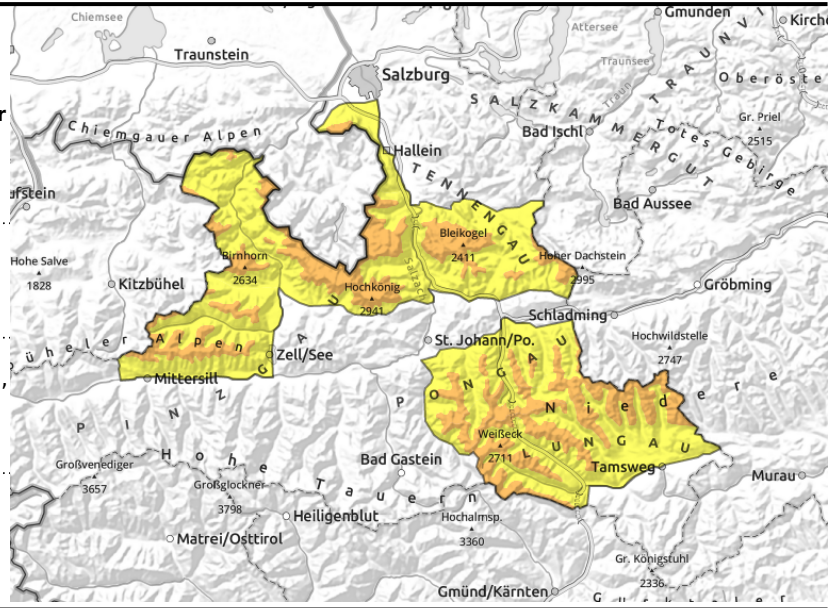
Danger ratings



1	2	3	4	5
low	moderate	considerable	high	very high



Expositions

valid until: **Thursday, 25.01.2024, 18:00 h**

Tennengebirge, Gosaukamm, Steinernes Meer, Hochkönig, Hagengebirge, Göllstock, Loferer und Leoganger Steinberge, Niedere Tauern Alpenhauptkamm, Niedere Tauern Nord, Chiemgauer Alpen, Heutal, Reiteralpe, Untersbergstock, Niedere Tauern Süd, Ankogelgruppe, Muhr, Kitzbüheler Alpen, Glemmtal



  near to and distant from ridges, behind discontinuities, in gullies, steep bowls

  in extremely steep grass-covered terrain, isolated large avalanches possible

Treacherous snowdrift situation at high altitudes

Avalanche danger above 2200 m is CONSIDERABLE, below that altitude danger is moderate. The fresh snowdrifts can in many places and in all aspects be triggered as medium-sized avalanches even by 1 person. Danger zones swiftly increase with ascending altitude both in frequency and in size, occur mostly behind discontinuities (also distant from ridges) and in steep gullies and bowls. Poor visibility makes it more difficult to assess the risks. In addition, the danger of naturally triggered glide-snow avalanches persists below 2500 m. Isolated large-sized avalanches are possible in higher-altitude starting zones.

Snowpack structure

On top of the snowfall at the start of the week, an additional 10-30 cm of fresh snow is expected amid heavy wind impact from W/N. The base is moistened due to rainfall and higher temperatures below 2300-2500 m. Weak layer for a slab is a soft layer of faceted crystals beneath a near-surface crust in the old snow (rain-ice crust or wind crust or melt-freeze crust) but fractures inside the freshly generated drifts are also possible. Lower temperatures are helping the moist snowpack to regain its firmness. Reinforced gliding is being observed on steep grass-covered slopes.

Weather

Overnight there will be snowfall accompanied by strong-to-stormy W/NW winds, the snowfall level dropping from 1700 down to 1000 m. At 1500 m: +2 degrees; at 2000 m: -1 degree. On Thursday the peaks will be shrouded in clouds, reduced visibility, frequent snowfall (often heavy), but also interims. At 1500 m: -1 degree; at 2000 m: -2 degrees. The W/NW winds will be blowing at 90 km/hr in the Tauern.

Outlook

On Friday, the next warm front will pass through bringing heavy precipitation. Wet snow problem at low and intermediate altitudes, a treacherous slab situation at high altitudes.

Avalanche problems



Danger ratings

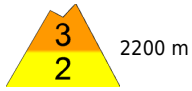
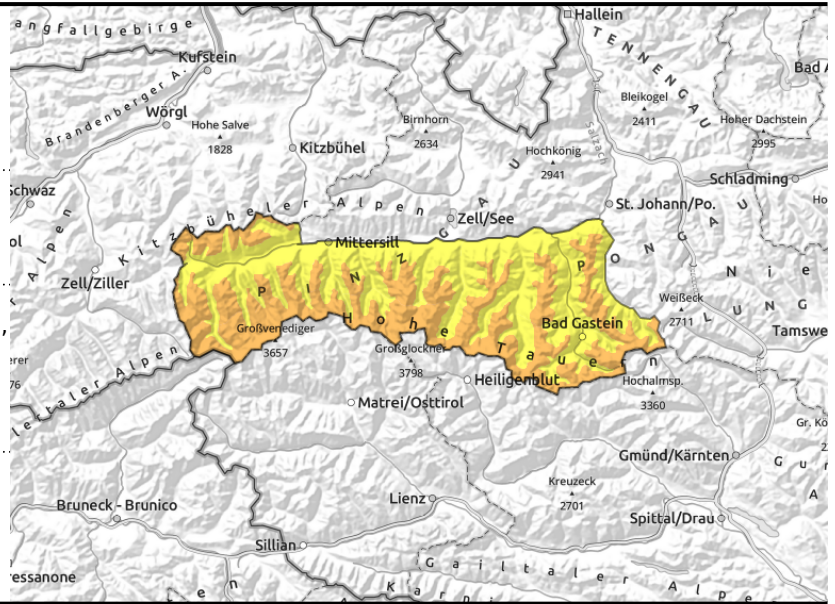


Expositions



valid until: **Thursday, 25.01.2024, 18:00 h**

Oberpinzgauer Grasberge, Großvenedigergruppe Nord, Großvenedigergruppe Alpenhauptkamm, Glocknergruppe Nord, Glocknergruppe Alpenhauptkamm, Goldberggruppe Nord, Goldberggruppe Alpenhauptkamm



near to and distant from ridges, behind discontinuities, in gullies, steep bowls, wide-ranging drifts

in extremely steep grass-covered terrain, isolated large avalanches possible

Heavy snowfall, danger of naturally triggered slab avalanches

Avalanche danger above 2200 m is CONSIDERABLE, below that altitude danger is moderate. At high and high-alpine altitudes in the Tauern zone, slab avalanches can trigger naturally and reach large size (magnitude 3). The fresh snowdrifts can in many places and in all aspects be triggered as medium-sized avalanches even by 1 person. Danger zones swiftly increase with ascending altitude both in frequency and in size, occur mostly behind discontinuities (also distant from ridges) and in steep gullies and bowls. Poor visibility makes it more difficult to assess the risks. In addition, the danger of naturally triggered glide-snow avalanches persists below 2500 m. Isolated large-sized avalanches are possible in higher-altitude starting zones.

Snowpack structure

On top of the snowfall at the start of the week, an additional 10-30 cm of fresh snow is expected amid heavy wind impact from W/N. The base is moistened due to rainfall and higher temperatures below 2300-2500 m. Weak layer for a slab is a soft layer of faceted crystals beneath a near-surface crust in the old snow (rain-ice crust or wind crust or melt-freeze crust) but fractures inside the freshly generated drifts are also possible. Lower temperatures are helping the moist snowpack to regain its firmness. Reinforced gliding is being observed on steep grass-covered slopes.

Weather

Overnight there will be snowfall accompanied by strong-to-stormy W/NW winds, the snowfall level dropping from 1700 down to 1000 m. At 1500 m: +2 degrees; at 2000 m: -1 degree. On Thursday the peaks will be shrouded in clouds, reduced visibility, frequent snowfall (often heavy), but also interims. At 1500 m: -1 degree; at 2000 m: -2 degrees. The W/NW winds will be blowing at 90 km/hr in the Tauern.

Outlook

On Friday, the next warm front will pass through bringing heavy precipitation. Wet snow problem at low and intermediate altitudes, a treacherous slab situation at high altitudes.

Translated by Jeffrey McCabe, www.creativtrans.com

Avalanche problems



Danger ratings



Expositions

