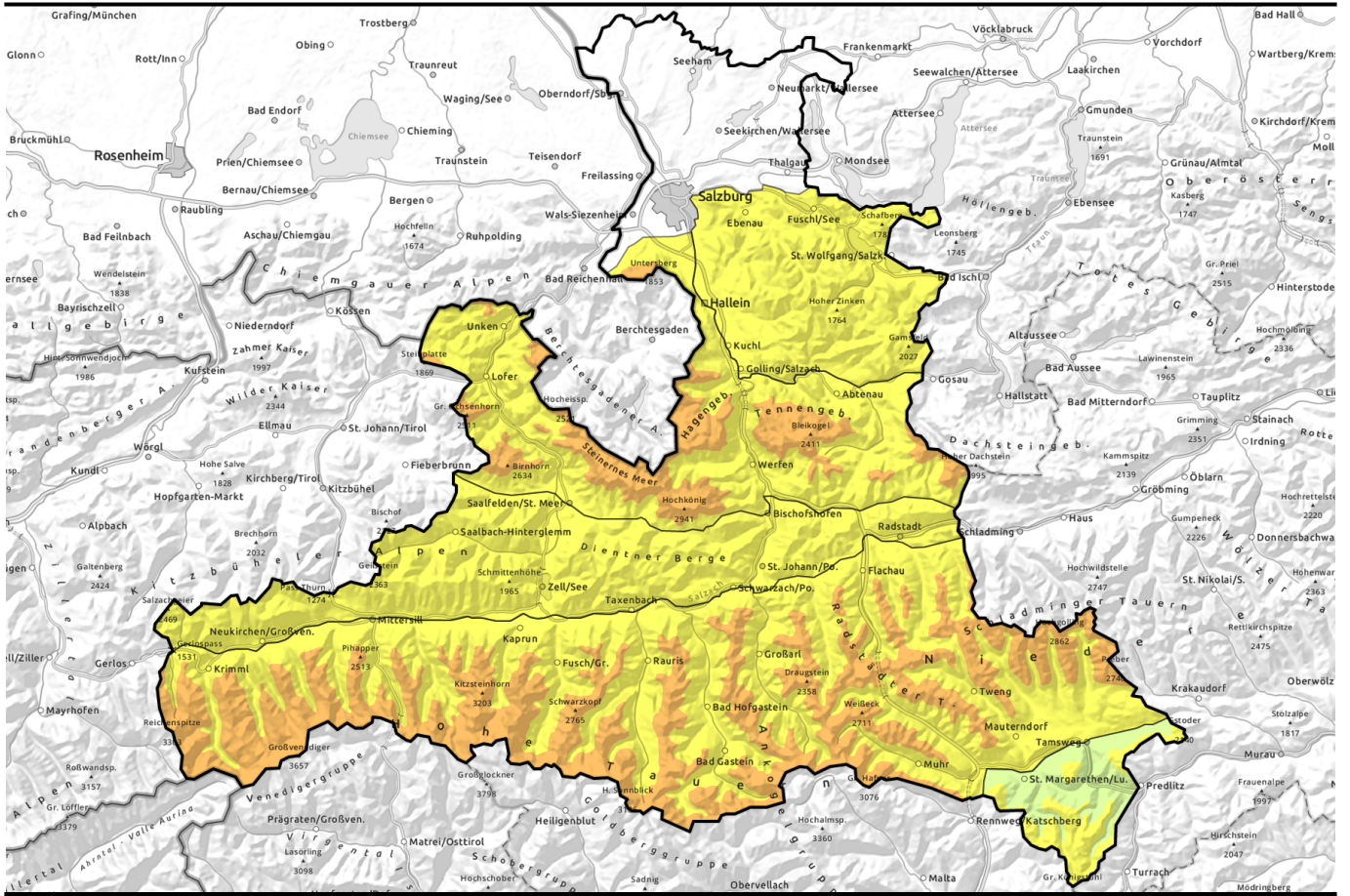


valid until: **Wednesday, 24.01.2024, 18:00**

h



Striking rise in temperatures plus storm winds

	<p>Osterhorngruppe, Gamsfeldgruppe, Dientner Grasberge, Pongauer Grasberge, Kitzbüheler Alpen, Glemmtal, Oberpinzgauer Grasberge</p>	
	<p>forestline Nockberge</p>	
	<p>2000 m Glocknergruppe Nord, Glocknergruppe Alpenhauptkamm, Goldberggruppe Nord, Goldberggruppe Alpenhauptkamm, Tennengebirge, Gosaukamm, Steinernes Meer, Hochkönig, Hagengebirge, Göllstock, Loferer und Leoganger Steinberge, Niedere Tauern Alpenhauptkamm, Niedere Tauern Nord, Chiemgauer Alpen, Heutal, Reiteralpe, Großvenedigergruppe Alpenhauptkamm, Untersbergstock, Niedere Tauern Süd, Ankogelgruppe, Muhr, Großvenedigergruppe Nord</p>	

Avalanche problems



Danger ratings



Expositions



valid until: **Wednesday, 24.01.2024, 18:00**

h

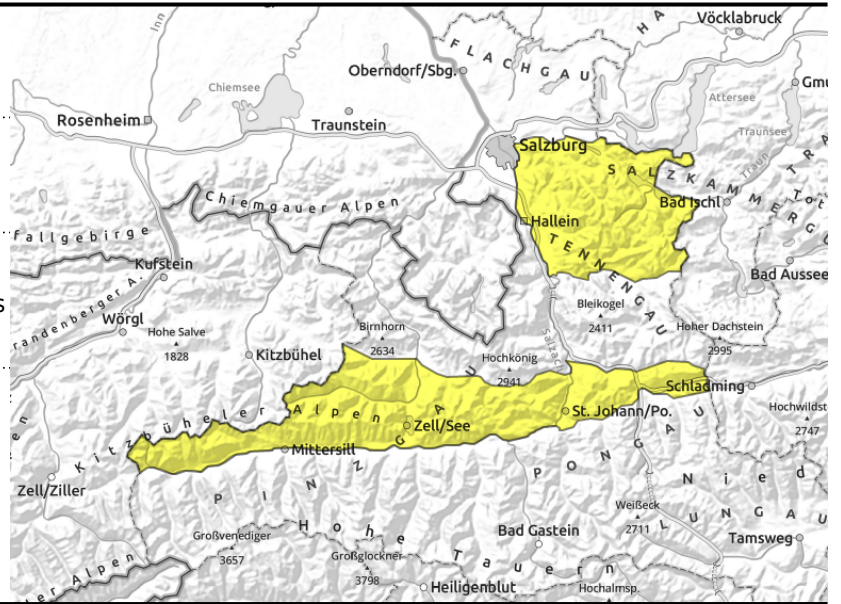
Osterhorngruppe, Gamsfeldgruppe, Dientner Grasberge, Pongauer Grasberge, Kitzbüheler Alpen, Glemmtal, Oberpinzgauer Grasberge



near ridges, behind discontinuities, in gullies, bowls of all aspects



marked warmth, loss of firmness in low/intermediate fresh snow



Consequently AVOID freshly generated snowdrifts

Avalanche danger is MODERATE. Fresh snowdrifts on N/E/S facing slopes can be triggered by 1 person and reach medium size. Also in gullies in other aspects the drifts are trigger-prone. At low and intermediate altitudes, in addition, small wet loose-snow avalanches are expected, either triggering naturally or artificially. Latent danger of small-to-medium glide-snow avalanches persists.

Snowpack structure

Since Monday evening there has been 5-10 cm of fresh snow registered, in Dientner and Pongau Grassy Mountains and Osterhorn Massif up to 20 cm. Stormy winds have transported the snow above the treeline, the newly formed snowdrift accumulations are distributed irregularly over the snowpack surface, lower down atop a melt-freeze crust. Potential weak layer: a soft layer (faceted crystals) beneath a recent crust (rain-ice crust or wind crust or melt-freeze crust) but fractures inside the freshly generated drifts are also possible. The striking rise in temperatures is making the fresh snow at lower altitudes forfeit its firmness.

Weather

On Tuesday night, scattered clouds to start with, after midnight heavier cloud cover with snowfall will pass through, temperatures will rise markedly. By morning in the Northern Alps, 3-10 cm of fresh snow expected, the W/NW winds will intensify significantly.

On Wednesday, heavy cloud cover, precipitation will soon taper off. In the afternoon, rainfall, snowfall level dropping from 2000 down to nearly 1500 m. Winds will be westerly, strong-to-stormy, reaching 50-70 km/hr At 1500 m: 4-7 degrees; at 2000 m: 2 degrees. On Wednesday night, 10-20 cm of fresh snow expected in the Northern Alps amid heavy wind impact.

Outlook

Due to further fresh snowfall and storm-strength winds on Thursday, a marked snowdrift problem.

Avalanche problems



Danger ratings



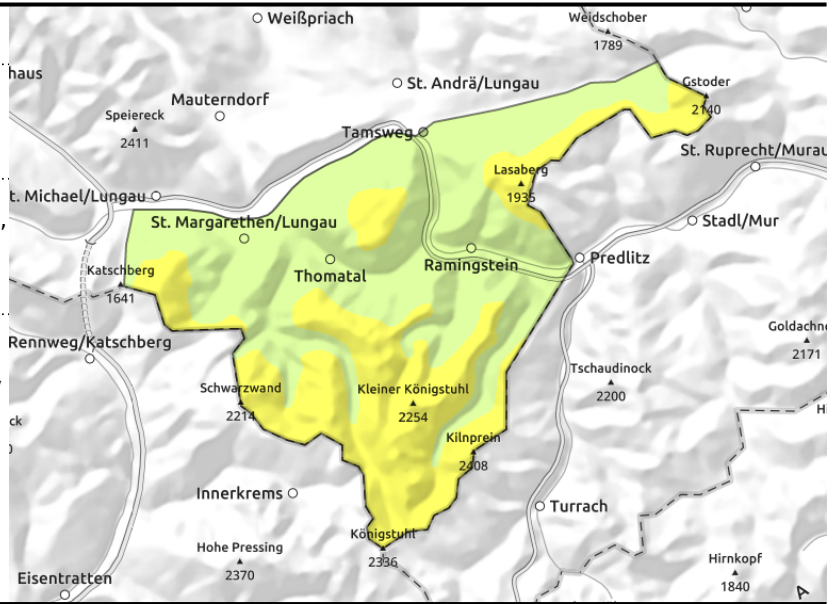
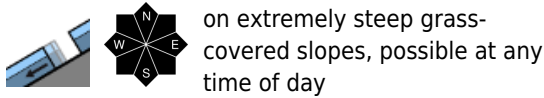
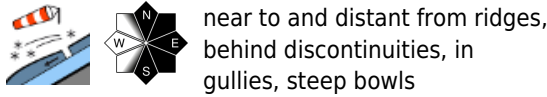
Expositions



valid until: **Wednesday, 24.01.2024, 18:00**

h

Nockberge



Pay heed to danger zones caused by snowdrifts

Avalanche danger is moderate above the treeline, below that altitude danger is low.

Fresh and older snowdrift accumulations can be triggered by 1 person in some places and release a slab, usually small sized, sometimes medium. Most danger zones are above the treeline on E facing slopes and in wind-loaded gullies.

Glide-snow avalanches are still a threat where snow is sufficient, most releases remain small. Avoid zones below glide cracks.

Snowpack structure

Irregular snowpack surface, minor fresh snow atop it. Weak layer: the soft lacer beneath the melt-freeze crust (wind crusts and rain-ice crusts) is the likeliest weak layer below the fresh snow and drifts from Friday. The loose snowslides over the latest melt-freeze crust surface.

Older snowdrift accumulations unlikely to trigger, only by large additional loading, otherwise the old snowpack is stable.

Weather

On Tuesday night, scattered clouds to start with, after midnight heavier cloud cover with snowfall will pass through, temperatures will rise markedly. By morning, 2 cm of fresh snow expected, the W/NW winds will intensify significantly.

On Wednesday, heavy cloud cover, precipitation will soon taper off. Dry. Winds will be westerly, strong-to-stormy, reaching 50-70 km/hr At 2000 m: 2 degrees.

Outlook

Due to further fresh snowfall and storm-strength winds on Thursday, a marked rise in avalanche danger (snowdrift problem).

Avalanche problems



Danger ratings



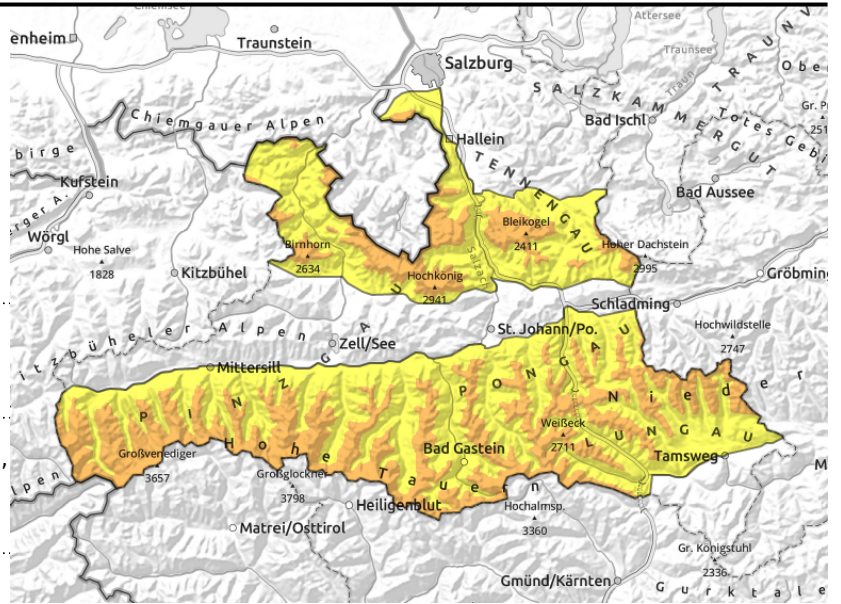
Expositions

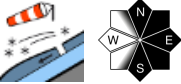


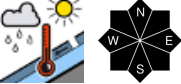
valid until: **Wednesday, 24.01.2024, 18:00**

h

Glocknergruppe Nord, Glocknergruppe Alpenhauptkamm, Goldberggruppe Nord, Goldberggruppe Alpenhauptkamm, Tennengebirge, Gosaukamm, Steinernes Meer, Hochkönig, Hagengebirge, Göllstock, Loferer und Leoganger Steinberge, Niedere Tauern Alpenhauptkamm, Niedere Tauern Nord, Chiemgauer Alpen, Heutal, Reiteralpe, Großvenedigergruppe Alpenhauptkamm, Untersbergstock, Niedere Tauern Süd, Ankogelgruppe, Muhr, Großvenedigergruppe Nord



 near to and distant from ridges, behind discontinuities, in gullies, steep bowls

 marked warmth, loss of firmness in low/intermediate fresh snow

Pay heed to dangers of falling

Avalanche danger above 2000 m is CONSIDERABLE, danger is moderate below that altitude. Fresh snowdrift accumulations on N/E/S facing slopes can be triggered by 1 person, grow to medium size. Also in gullies in other aspects the drifts are trigger-prone. At low and intermediate altitudes, in addition, small wet loose-snow avalanches are expected, either triggering naturally or artificially. Latent danger of small-to-medium glide-snow avalanches persists.

Snowpack structure

Since Monday evening there has been 10 cm of fresh snow registered, also 20-25 cm in Niedere Tauern and Northern Alps. Stormy winds have transported the snow above the treeline, the newly formed snowdrift accumulations are distributed irregularly over the snowpack surface, lower down atop a melt-freeze crust. Potential weak layer: a soft layer (faceted crystals) beneath a recent crust (rain-ice crust or wind crust or melt-freeze crust) but fractures inside the freshly generated drifts are also possible. The striking rise in temperatures is making the fresh snow at lower altitudes forfeit its firmness.

Weather

On Tuesday night, scattered clouds to start with, after midnight heavier cloud cover with snowfall will pass through, temperatures will rise markedly. By morning in the Northern Alps, 3-10 cm of fresh snow expected, the W/NW winds will intensify significantly. On Wednesday, heavy cloud cover, precipitation will soon taper off. In the afternoon, rainfall, snowfall level dropping from 2000 down to nearly 1500 m. Winds will be westerly, strong-to-stormy, reaching 100 km/hr At 2000 m: 2 degrees, at 3000 m: -4 degrees. On Wednesday night, 10-20 cm of fresh snow expected in the Northern Alps and Tauern amid heavy wind impact.

Outlook

Due to further fresh snowfall and storm-strength winds on Thursday, a marked snowdrift problem.

Translated by Jeffrey McCabe, www.creativtrans.com

Avalanche problems



Danger ratings



Expositions

