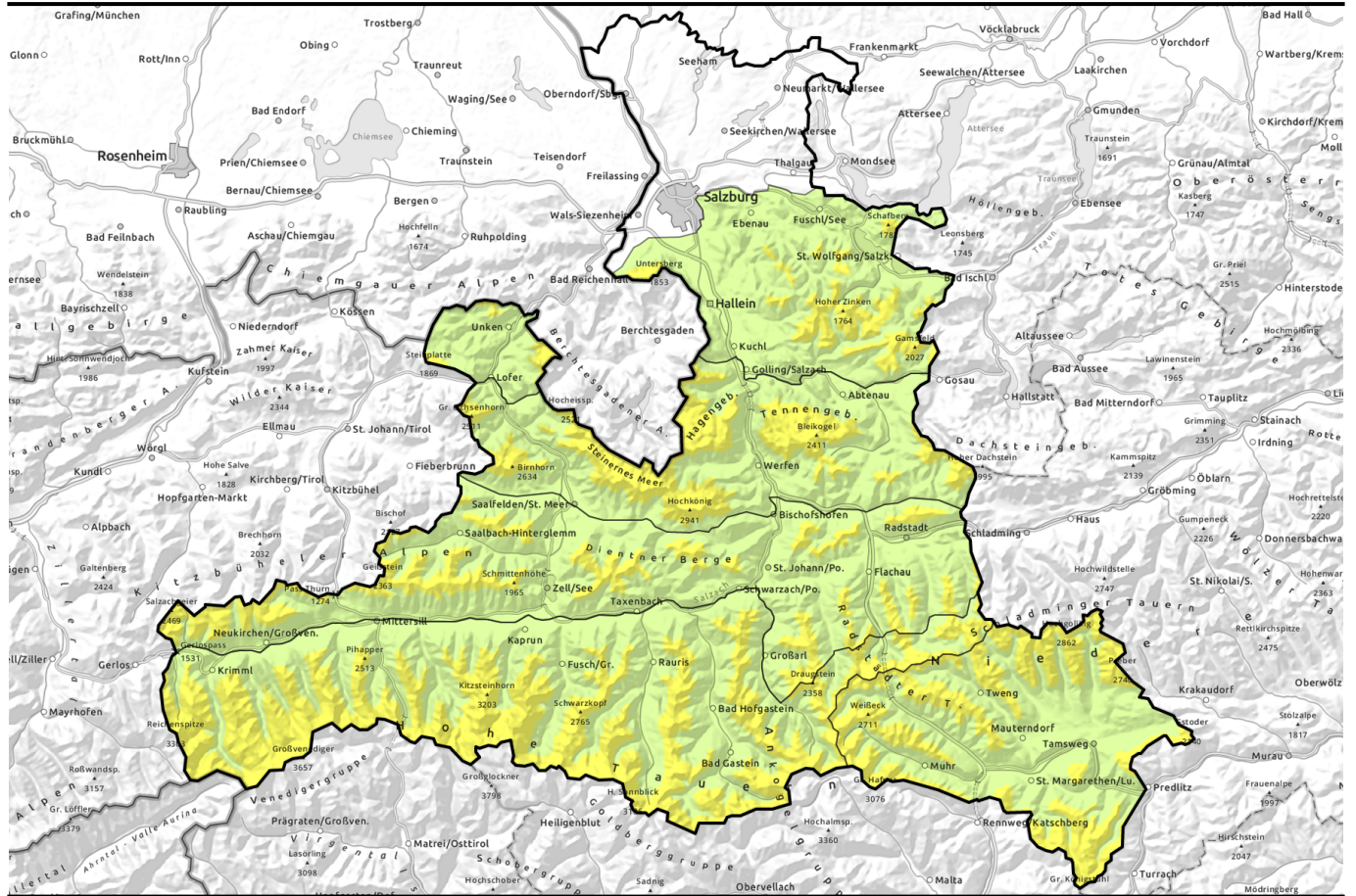


valid until: **Tuesday, 23.01.2024, 18:00 h**



## Again freshly generated snowdrifts

- |  |   |  |
|--|---|--|
|  | <p>forestline</p> <p>Osterhorngruppe, Gamsfeldgruppe, Untersbergstock, Dientner Grasberge, Pongauer Grasberge, Niedere Tauern Nord, Chiemgauer Alpen, Heutal, Reiteralpe, Kitzbüheler Alpen, Glemmtal, Oberpinzgauer Grasberge</p>  |  |
|  | <p>forestline</p> <p>Nockberge, Niedere Tauern Süd, Ankogelgruppe, Muhr</p>   |  |
|  | <p>forestline</p> <p>Glocknergruppe Nord, Glocknergruppe Alpenhauptkamm, Goldberggruppe Nord, Goldberggruppe Alpenhauptkamm, Tennengebirge, Gosaukamm, Steinernes Meer, Hochkönig, Hagengebirge, Göllstock, Loferer und Leoganger Steinberge, Großvenedigergruppe Nord, Großvenedigergruppe Alpenhauptkamm, Niedere Tauern Alpenhauptkamm</p> |  |

### Avalanche problems



### Danger ratings

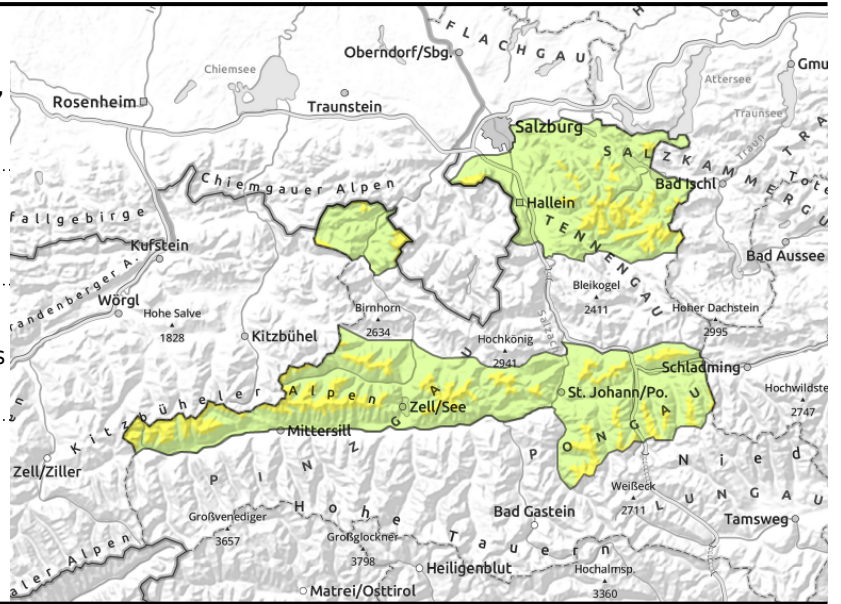
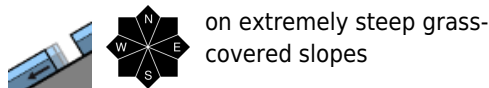
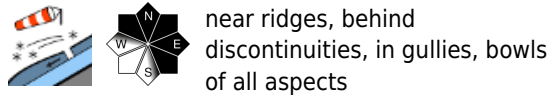


### Expositions



valid until: **Tuesday, 23.01.2024, 18:00 h**

**Osterhorngruppe, Gamsfeldgruppe, Untersbergstock, Dientner Grasberge, Pongauer Grasberge, Niedere Tauern Nord, Chiemgauer Alpen, Heutal, Reiteralpe, Kitzbüheler Alpen, Glemmtal, Oberpinzgauer Grasberge**



## Pay heed to dangers of falling

Avalanche danger above the timberline is moderate, below that altitude danger is low.

Fresh and older snowdrift accumulations can be triggered by 1 person in some places and release a slab, usually small sized, sometimes medium. Most danger zones are above the treeline on N/E facing slopes and in wind-loaded gullies.

A few small loose-snow avalanches/slides can be triggered naturally in steep terrain.

Isolated glide-snow avalanches are still a threat, despite lower temperatures. Where snow depths are sufficient, large-sized avalanches are possible (most medium-sized). Avoid zones below glide cracks.

## Snowpack structure

Irregular snowpack surface, occasional powder. Weak layer: the soft lacer beneath the melt-freeze crust (wind crusts and rain-ice crusts) is the likeliest weak layer below the fresh snow and drifts from Friday. The loose snowslides over the latest melt-freeze crust surface.

Older snowdrift accumulations unlikely to trigger, only by large additional loading, otherwise the old snowpack is stable.

## Weather

On Monday night a cold front will pass through bringing snowfall (5-10 cm) and strong westerly winds, the snowfall level rapidly descending from 1500 to nearly 1000 m. On Tuesday daytime, heavily overcast skies, snow showers, snowfall level fluctuating between 800 and 1000 m. Clouds will later disperse, showers become seldom. All in all, about 5 cm of fresh snow is expected. Visibility can be reduced. Strong westerly winds at high altitudes, later slackening off and shifting to southerly. Temperatures dropping. At 2000 m: -5 degrees.

On Tuesday night a warm front will pass through, Rainfall is possible up to 2400 m. It will be very windy.

## Outlook

On Wednesday very mild, the gliding snow problem will intensify. Dry-snow avalanches unlikely.

### Avalanche problems



### Danger ratings

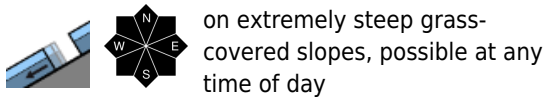
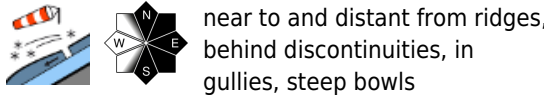


### Expositions



valid until: **Tuesday, 23.01.2024, 18:00 h**

**Nockberge, Niedere Tauern Süd, Ankogelgruppe, Muhr**



**Pay heed to dangers of falling**

Avalanche danger is moderate above the treeline, below that altitude danger is low. Fresh and older snowdrift accumulations can be triggered by 1 person in some places and release a slab, usually small sized, sometimes medium. Most danger zones are above the treeline on N/E facing slopes and in wind-loaded gullies. Glide-snow avalanches are still a threat where snow is sufficient, most releases remain small. Avoid zones below glide cracks.

**Snowpack structure**

Irregular snowpack surface, occasional powder. Weak layer: the soft lacer beneath the melt-freeze crust (wind crusts and rain-ice crusts) is the likeliest weak layer below the fresh snow and drifts from Friday. The loose snowslides over the latest melt-freeze crust surface. Older snowdrift accumulations unlikely to trigger, only by large additional loading, otherwise the old snowpack is stable.

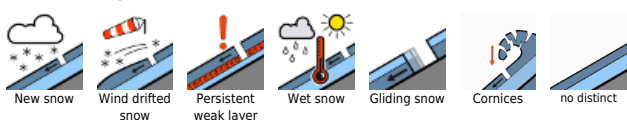
**Weather**

On Monday night a cold front will pass through bringing snowfall (5-10 cm in Lungau). On Tuesday very windy from the west, adequate visibility, intermittent sunshine. At 2000 m: -5 degrees. On Tuesday night a warm front will pass through, Rainfall is possible up to 2400 m. It will be very windy.

**Outlook**

On Wednesday very mild, the gliding snow problem will intensify. Dry-snow avalanches unlikely.

**Avalanche problems**



**Danger ratings**

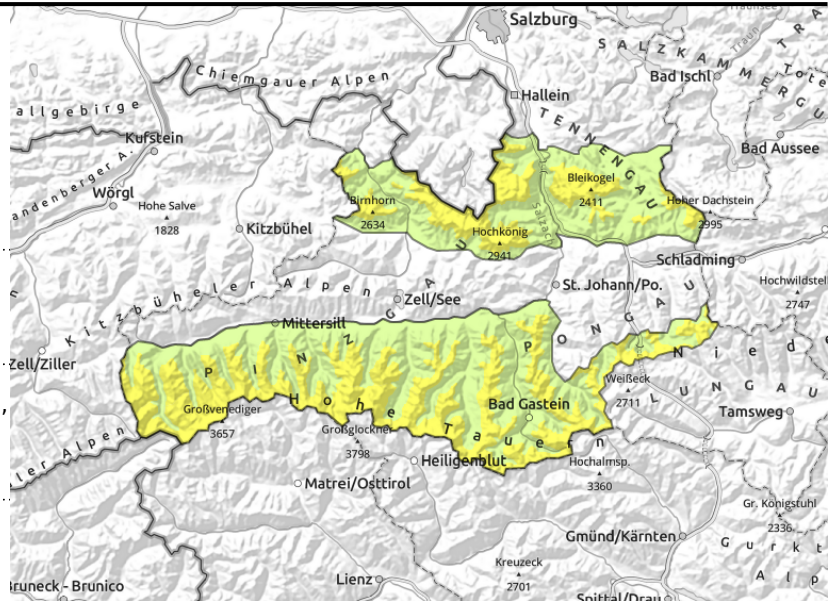


**Expositions**



valid until: **Tuesday, 23.01.2024, 18:00 h**

**Glocknergruppe Nord, Glocknergruppe Alpenhauptkamm, Goldberggruppe Nord, Goldberggruppe Alpenhauptkamm, Tennengebirge, Gosaukamm, Steinernes Meer, Hochkönig, Hagengebirge, Göllstock, Loferer und Leoganger Steinberge, Großvenedigergruppe Nord, Großvenedigergruppe Alpenhauptkamm, Niedere Tauern Alpenhauptkamm**



forestline



near to and distant from ridges, behind discontinuities, in gullies, steep bowls



possible at any time of day, on extremely steep grass-covered slopes

## Pay heed to dangers of falling

Avalanche danger is moderate above the treeline, below that altitude danger is low.

Fresh drifts (on NW/E/S facing slopes) can be triggered by 1 person in some places and release a slab, usually small sized, sometimes medium.

A few small loose-snow avalanches/slides can be triggered naturally in steep terrain.

Isolated glide-snow avalanches are still a threat, despite lower temperatures. Where snow depths are sufficient, large-sized avalanches are possible (most medium-sized). Avoid zones below glide cracks.

## Snowpack structure

Irregular snowpack surface, occasional powder. Weak layer: the soft lacer beneath the melt-freeze crust (wind crusts and rain-ice crusts) is the likeliest weak layer below the fresh snow and drifts from Friday. The loose snowslides over the latest melt-freeze crust surface.

Older snowdrift accumulations unlikely to trigger, only by large additional loading, otherwise the old snowpack is stable.

## Weather

On Monday night a cold front will pass through bringing snowfall (5-10 cm) and strong westerly winds, the snowfall level rapidly descending from 1500 to nearly 1000 m. On Tuesday daytime, heavily overcast skies, snow showers, snowfall level fluctuating between 800 and 1000 m. Clouds will later disperse, showers become seldom. All in all, about 5 cm of fresh snow is expected. Visibility can be reduced. Strong westerly winds at high altitudes, later slackening off and shifting to southerly. Temperatures dropping. At 2000 m: -5 degrees.

On Tuesday night a warm front will pass through, Rainfall is possible up to 2400 m. It will be very windy.

## Outlook

On Wednesday very mild and stormy, the gliding snow problem will intensify. Dry-snow avalanches only triggerable by 1 person at high altitudes.

Translated by Jeffrey McCabe, [www.creativtrans.com](http://www.creativtrans.com)

### Avalanche problems



### Danger ratings



### Expositions

