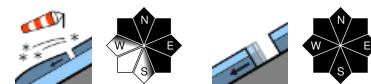


Some freshly generated snowdrifts



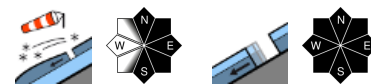
forestline

Osterhorngruppe, Gamsfeldgruppe, Untersbergstock, Dientner Grasberge, Pongauer Grasberge, Niedere Tauern Nord, Chiemgauer Alpen, Heutal, Reiteralpe, Kitzbüheler Alpen, Glemmtal, Oberpinzgauer Grasberge



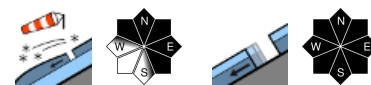
forestline

Nockberge, Niedere Tauern Süd



forestline

Glocknergruppe Nord, Glocknergruppe Alpenhauptkamm, Goldberggruppe Nord, Goldberggruppe Alpenhauptkamm, Tennengebirge, Gosaukamm, Steinernes Meer, Hochkönig, Hagengebirge, Göllstock, Loferer und Leoganger Steinberge, Großvenedigergruppe Nord, Großvenedigergruppe Alpenhauptkamm, Ankogelgruppe, Muhr, Niedere Tauern Alpenhauptkamm



Avalanche problems



Danger ratings

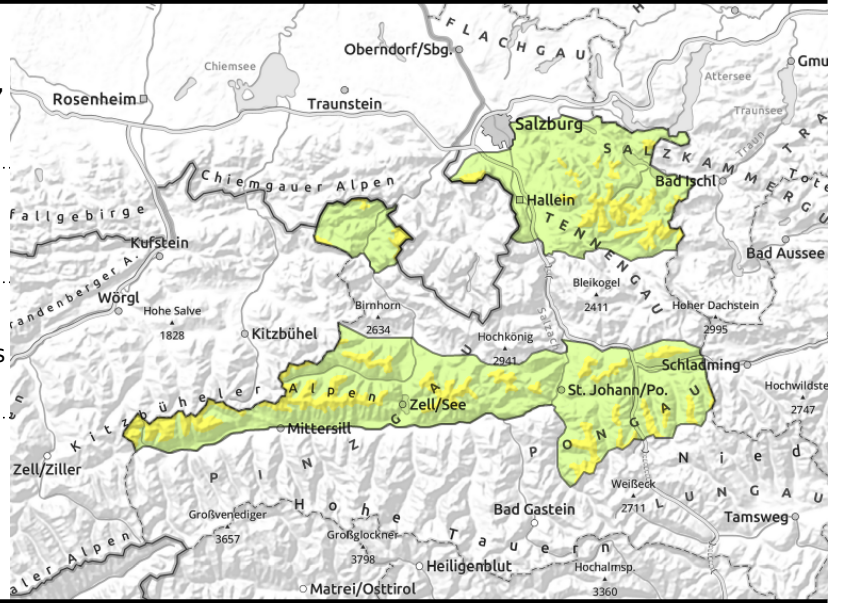


Expositions



valid for: **Monday, 22.01.2024**

Osterhorngruppe, Gamsfeldgruppe, Untersbergstock, Dientner Grasberge, Pongauer Grasberge, Niedere Tauern Nord, Chiemgauer Alpen, Heutal, Reiteralpe, Kitzbüheler Alpen, Glemmtal, Oberpinzgauer Grasberge



forestline



near ridges, behind discontinuities, in gullies, bowls of all aspects



on extremely steep grass-covered slopes

Pay heed to dangers of falling

Avalanche danger above the timberline is moderate, below that altitude danger is low. Fresh and older snowdrift accumulations can be triggered by 1 person in some places and release a slab, usually small sized, sometimes medium. Most danger zones are above the treeline on N/E facing slopes and in wind-loaded gullies. A few small loose-snow avalanches/slides can be triggered naturally in steep terrain. Isolated glide-snow avalanches are still a threat, despite lower temperatures. Where snow depths are sufficient, large-sized avalanches are possible (most medium-sized). Avoid zones below glide cracks.

Snowpack structure

Irregular snowpack surface, occasional powder. Weak layer: the soft lacer beneath the melt-freeze crust (wind crusts and rain-ice crusts) is the likeliest weak layer below the fresh snow and drifts from Friday. The loose snowslides over the latest melt-freeze crust surface. Older snowdrift accumulations unlikely to trigger, only by large additional loading, otherwise the old snowpack is stable.

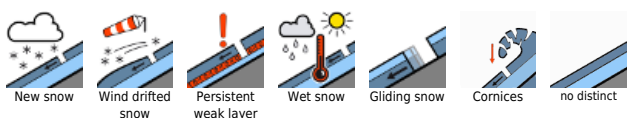
Weather

On Monday, heavy cloudbanks from the west will move in, only brief sunshine. As of midday skies will be overcast, but the peaks will remain in the clear, visibility adequate but diffuse. Mostly light winds. Mild. At 2000 m: 6 degrees. On Monday night a cold front will pass through.

Outlook

On Tuesday, strong westerly winds and some fresh snow will generate new snowdrift accumulations near to and distant from ridgeline terrain.

Avalanche problems



Danger ratings



Expositions



Nockberge, Niedere Tauern Süd



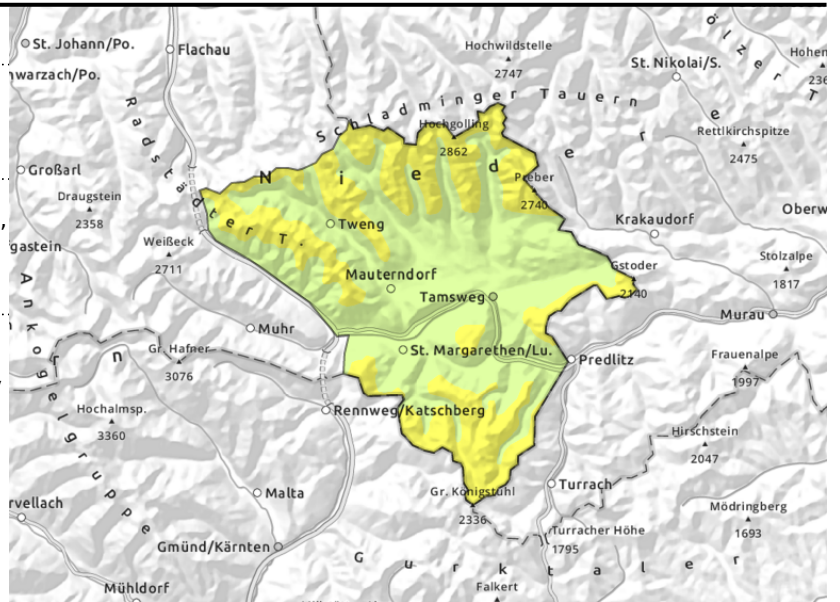
forestline



near to and distant from ridges, behind discontinuities, in gullies, steep bowls



on extremely steep grass-covered slopes, possible at any time of day



Pay heed to dangers of falling

Avalanche danger is moderate above the treeline, below that altitude danger is low.

Fresh and older snowdrift accumulations can be triggered by 1 person in some places and release a slab, usually small sized, sometimes medium. Most danger zones are above the treeline on N/E facing slopes and in wind-loaded gullies.

Isolated glide-snow avalanches are still a threat, despite lower temperatures. Where snow depths are sufficient, large-sized avalanches are possible (most medium-sized). Avoid zones below glide cracks.

Snowpack structure

Irregular snowpack surface, occasional powder. Weak layer: the soft lacer beneath the melt-freeze crust (wind crusts and rain-ice crusts) is the likeliest weak layer below the fresh snow and drifts from Friday. The loose snowslides over the latest melt-freeze crust surface.

Older snowdrift accumulations unlikely to trigger, only by large additional loading, otherwise the old snowpack is stable.

Weather

On Monday, heavy cloudbanks from the west will move in, only brief sunshine. As of midday skies will be overcast, but the peaks will remain in the clear, visibility adequate but diffuse. Mostly light winds. Mild. At 2000 m: 6 degrees.

On Monday night a cold front will pass through.

Outlook

On Tuesday, strong westerly winds and some fresh snow will generate new snowdrift accumulations near to and distant from ridgeline terrain.

Avalanche problems



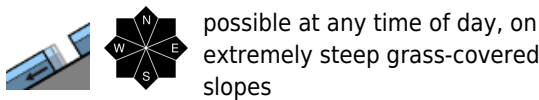
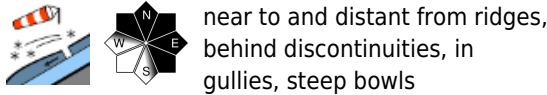
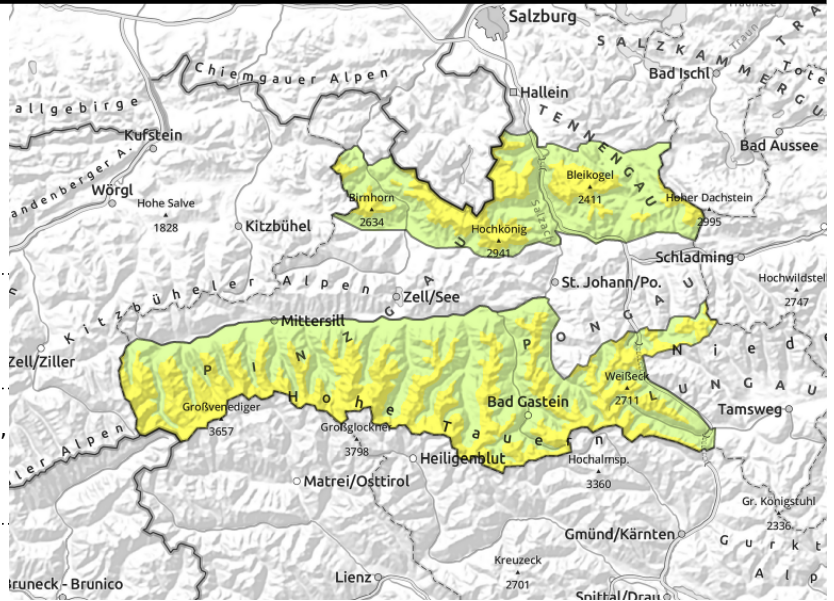
Danger ratings



Expositions



Glocknergruppe Nord, Glocknergruppe Alpenhauptkamm, Goldberggruppe Nord, Goldberggruppe Alpenhauptkamm, Tennengebirge, Gosaukamm, Steinernes Meer, Hochkönig, Hagengebirge, Göllstock, Loferer und Leoganger Steinberge, Großvenedigergruppe Nord, Großvenedigergruppe Alpenhauptkamm, Ankogelgruppe, Muhr, Niedere Tauern Alpenhauptkamm



Moderate southerly foehn wind will generate fresh snowdrift accumulations

Avalanche danger is moderate above the treeline, below that altitude danger is low. Fresh drifts (on north-facing slopes) and older snowdrift accumulations (on east-facing slopes) can be triggered by 1 person in some places and release a slab, usually small sized, sometimes medium. The danger zones are mostly easily recognized. Older drifts on south-facing slopes can be triggered by large additional loading. A few small loose-snow avalanches/slides can be triggered naturally in steep terrain. Isolated glide-snow avalanches are still a threat, despite lower temperatures. Where snow depths are sufficient, large-sized avalanches are possible (most medium-sized). Avoid zones below glide cracks.

Snowpack structure

Irregular snowpack surface, occasional powder. Weak layer: the soft lacer beneath the melt-freeze crust (wind crusts and rain-ice crusts) is the likeliest weak layer below the fresh snow and drifts from Friday. The loose snowslides over the latest melt-freeze crust surface. Older snowdrift accumulations unlikely to trigger, only by large additional loading, otherwise the old snowpack is stable.

Weather

On Monday, heavy cloudbanks from the west will move in, only brief sunshine. As of midday skies will be overcast, but the peaks will remain in the clear, visibility adequate but diffuse. Mostly light winds. Mild. At 2000 m: 6 degrees. On Monday night a cold front will pass through.

Outlook

On Tuesday, strong westerly winds and some fresh snow will generate new snowdrift accumulations near to and distant from ridgeline terrain.

Translated by Jeffrey McCabe, www.creativtrans.com

Avalanche problems



Danger ratings



Expositions

