

## Minor snowdrift problem, small loose-snow avalanches, isolated glide-snow releases

	<p>forestline                  Osterhorngruppe, Gamsfeldgruppe, Untersbergstock, Dientner Grasberge, Pongauer Grasberge, Niedere Tauern Nord, Chiemgauer Alpen, Heutal, Reiteralpe, Kitzbüheler Alpen, Glemmtal, Niedere Tauern Alpenhauptkamm</p>	
	<p>forestline                  Nockberge</p>	
	<p>forestline                  Glocknergruppe Nord, Glocknergruppe Alpenhauptkamm, Goldberggruppe Nord, Goldberggruppe Alpenhauptkamm, Tennengebirge, Gosaukamm, Steinernes Meer, Hochkönig, Hagengebirge, Göllstock, Loferer und Leoganger Steinberge, Oberpinzgauer Grasberge, Großvenedigergruppe Nord, Großvenedigergruppe Alpenhauptkamm, Ankogelgruppe, Muhr, Niedere Tauern Süd</p>	

### Avalanche problems



### Danger ratings

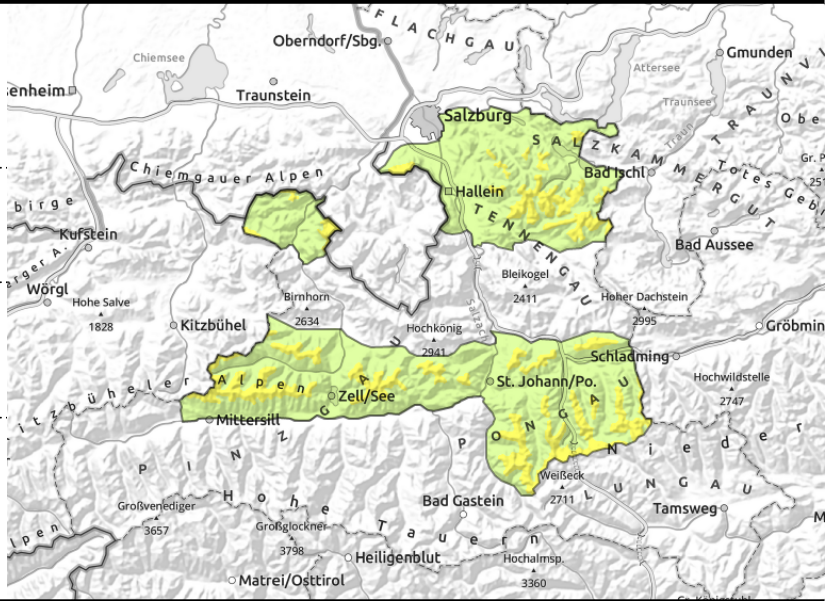


### Expositions



valid for: **Saturday, 20.01.2024**

**Osterhorngruppe, Gamsfeldgruppe, Untersbergstock, Dientner Grasberge, Pongauer Grasberge, Niedere Tauern Nord, Chiemgauer Alpen, Heutal, Reiteralpe, Kitzbüheler Alpen, Glemmtal, Niedere Tauern Alpenhauptkamm**



forestline



near ridges, behind discontinuities, near wooded zones, in gullies, bowls



on extremely steep grass-covered slopes

## Pay heed to dangers of falling

Avalanche danger is moderate.

Fresh snowdrift accumulations from Friday can be triggered by 1 person in some places and release a slab, sometimes medium sized. Most danger zones are above the treeline on N/E facing slopes and in wind-loaded gullies. Drifts are often blanketed over, thus they are not easily recognized. The dangers of falling outweigh those of being buried in snow masses.

Due to solar radiation, small loose-snow avalanches can trigger in steep rocky terrain.

Glide-snow avalanches are still a threat, despite lower temperatures. Where snow depths are sufficient, large-sized avalanches are possible (most medium-sized). Avoid zones below glide cracks.

## Snowpack structure

Fresh snow (10 cm) and snowdrifts are gradually bonding with the old snowpack surface.

Older snowdrift accumulations unlikely to trigger, only by large additional loading, otherwise the old snowpack is stable.

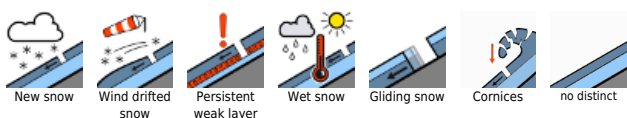
## Weather

On Saturday, unhampered sunshine, rising temperatures. winds light. At 2000 m: rising from -13 degrees in the morning to -8 degrees in the afternoon. Skies on Saturday night will be star-studded.

## Outlook

Avalanche danger levels will decrease.

### Avalanche problems

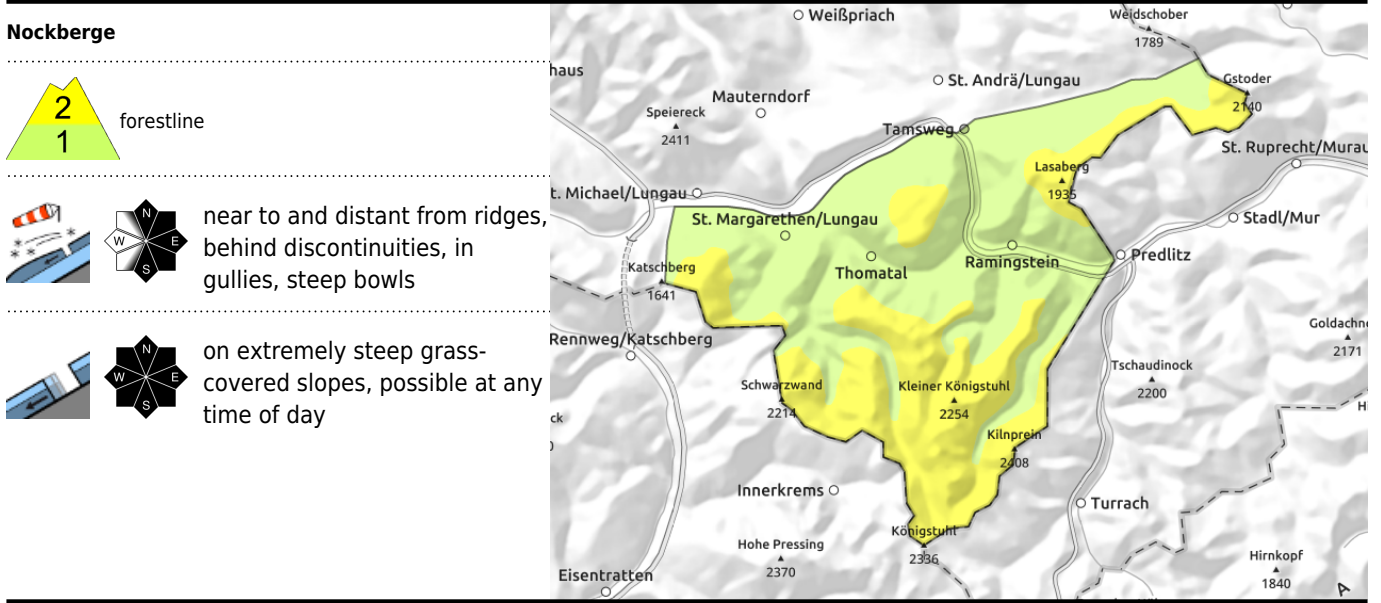


### Danger ratings



### Expositions





## Pay heed to dangers of falling

Avalanche danger is moderate above the treeline, below that altitude danger is low. Fresh snowdrift accumulations from Friday can be triggered by 1 person in some places and release a slab, sometimes medium sized. Most danger zones are above the treeline on E facing slopes and in wind-loaded gullies. Drifts are often blanketed over, thus they are not easily recognized. The dangers of falling outweigh those of being buried in snow masses. Glide-snow avalanches are still a threat, despite lower temperatures. Where snow depths are sufficient, large-sized avalanches are possible (most medium-sized). Avoid zones below glide cracks.

## Snowpack structure

Fresh snow (10 cm) and snowdrifts are gradually bonding with the old snowpack surface. Older snowdrift accumulations unlikely to trigger, only by large additional loading, otherwise the old snowpack is stable.

## Weather

On Saturday, unhampered sunshine, rising temperatures. winds light. At 2000 m: rising from -13 degrees in the morning to -8 degrees in the afternoon. Skies on Saturday night will be star-studded.

## Outlook

Avalanche danger levels will decrease.

### Avalanche problems



### Danger ratings

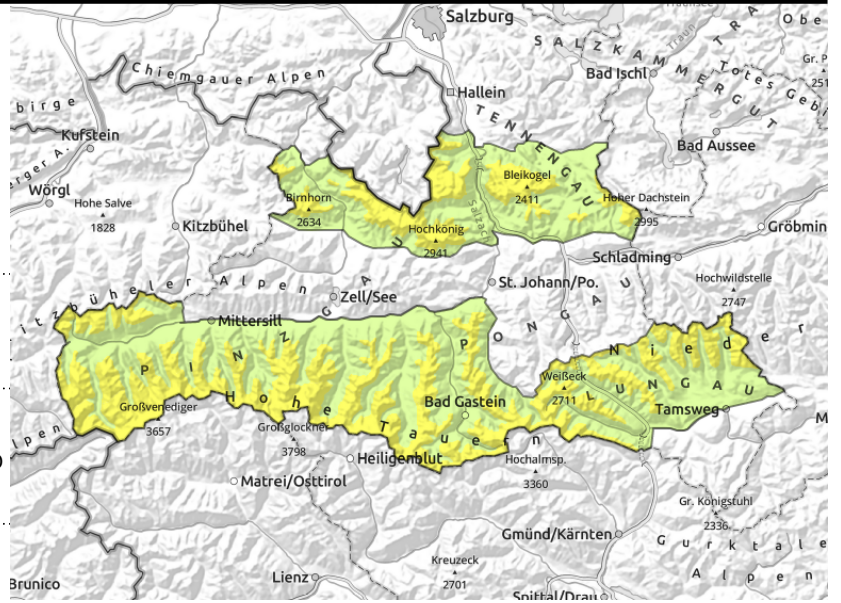


### Expositions



valid for: **Saturday, 20.01.2024**

**Glocknergruppe Nord, Glocknergruppe Alpenhauptkamm, Goldberggruppe Nord, Goldberggruppe Alpenhauptkamm, Tennengebirge, Gosaukamm, Steinernes Meer, Hochkönig, Hagengebirge, Göllstock, Loferer und Leoganger Steinberge, Oberpinzgauer Grasberge, Großvenedigergruppe Nord, Großvenedigergruppe Alpenhauptkamm, Ankogelgruppe, Muhr, Niedere Tauern Süd**



forestline



near ridges, behind discontinuities, in gullies, steep bowls



possible at any time of day, on extremely steep grass-covered slopes

## Pay heed to dangers of falling

Avalanche danger is moderate above the treeline, below that altitude danger is low.

Fresh snowdrift accumulations from Friday can be triggered by 1 person in some places and release a slab, sometimes medium sized. Most danger zones are above the treeline on N/E facing slopes and in wind-loaded gullies. Drifts are often blanketed over, thus they are not easily recognized. The dangers of falling outweigh those of being buried in snow masses.

Due to solar radiation, small loose-snow avalanches can trigger in steep rocky terrain.

Glide-snow avalanches are still a threat, despite lower temperatures. Where snow depths are sufficient, large-sized avalanches are possible (most medium-sized). Avoid zones below glide cracks.

## Snowpack structure

Fresh snow (10 cm) and snowdrifts are gradually bonding with the old snowpack surface.

Older snowdrift accumulations unlikely to trigger, only by large additional loading, otherwise the old snowpack is stable.

## Weather

On Saturday, unhampered sunshine, rising temperatures. winds light (NW winds in the Tauern will reach 30 km/hr). At 2000 m: rising from -13 degrees in the morning to -8 degrees in the afternoon. Skies on Saturday night will be star-studded.

## Outlook

Avalanche danger levels will decrease.

Translated by Jeffrey McCabe, [www.creativtrans.com](http://www.creativtrans.com)

### Avalanche problems



### Danger ratings



### Expositions

