

Pay close heed to fresh/older snowdrifts

	<p>Osterhorngruppe, Gamsfeldgruppe, Untersbergstock, Dientner Grasberge, Pongauer Grasberge, Niedere Tauern Nord, Chiemgauer Alpen, Heutal, Reiteralpe, Kitzbüheler Alpen, Glemmtal, Niedere Tauern Alpenhauptkamm</p>	
	<p>Nockberge</p>	
	<p>2000 m Glocknergruppe Nord, Glocknergruppe Alpenhauptkamm, Goldberggruppe Nord, Goldberggruppe Alpenhauptkamm, Tennengebirge, Gosaukamm, Steinernes Meer, Hochkönig, Hagengebirge, Göllstock, Loferer und Leoganger Steinberge, Oberpinzgauer Grasberge, Großvenedigergruppe Nord, Großvenedigergruppe Alpenhauptkamm, Ankogelgruppe, Muhr, Niedere Tauern Süd</p>	

Avalanche problems



Danger ratings

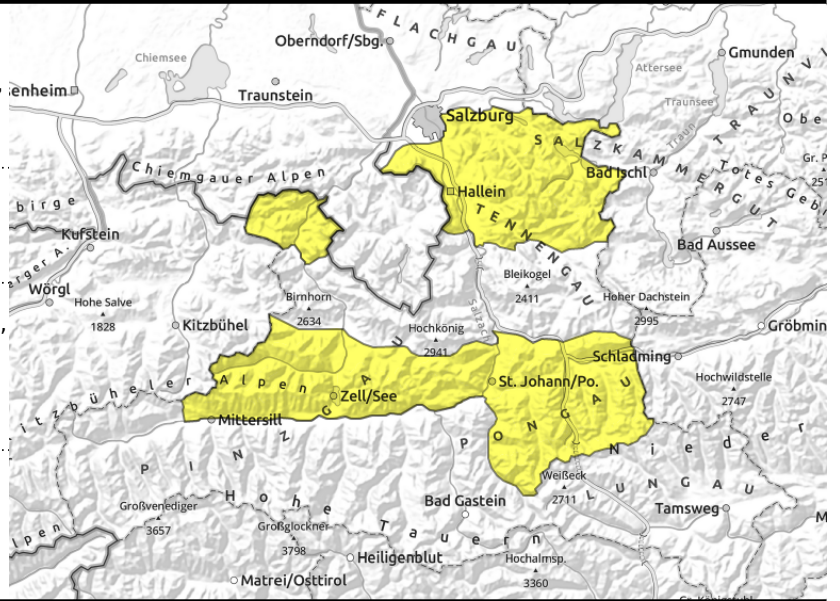


Expositions



valid for: **Friday, 19.01.2024**

Osterhorngruppe, Gamsfeldgruppe, Untersbergstock, Dientner Grasberge, Pongauer Grasberge, Niedere Tauern Nord, Chiemgauer Alpen, Heutal, Reiteralpe, Kitzbüheler Alpen, Glemmtal, Niedere Tauern Alpenhauptkamm



near to and distant from ridges, behind discontinuities, near wooded zones, in gullies of all aspects



on extremely steep grass-covered slopes

Fresh snowfall + wind: freshly generated snowdrifts

Avalanche danger is moderate.

Fresh snowdrift accumulations can be triggered by 1 person in some places above 1500 m, often medium sized. Drifts are easily recognized for the experienced. Avoid them in steep ridgeline terrain. Glide-snow avalanches are still a threat, despite lower temperatures. Where snow depths are sufficient, large-sized avalanches are possible (most medium-sized). Avoid zones below glide cracks.

Snowpack structure

On Thursday night, 5-15 cm of fresh snow expected amid strong NW winds and noticeably dropping temperatures. The fresh snow/drifts will be deposited atop a well settled snowpack, moist up to 2000 m.

Older snowdrift accumulations unlikely to trigger, only by large additional loading, otherwise the old snowpack is stable.

Weather

On Friday, cold at all altitudes, minor snow showers until midday, veiled summits in the morning, later dispersing. Light to moderate NW winds. At 2000 m: -13 degrees.

Outlook

Avalanche danger levels will decrease.

Avalanche problems



Danger ratings



Expositions



valid for: **Friday, 19.01.2024**

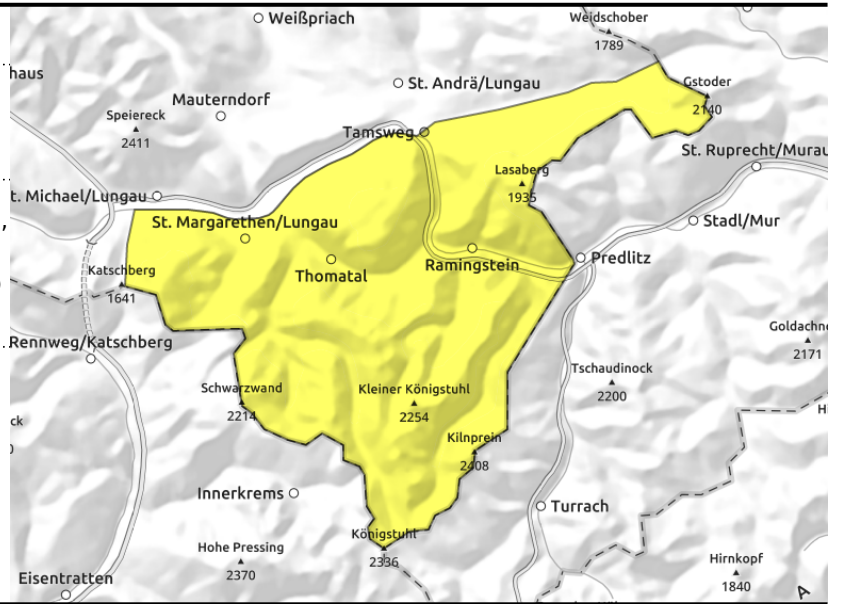
Nockberge



near to and distant from ridges, behind discontinuities, near wooded zones, in gullies, steep bowls



on extremely steep grass-covered slopes



Fresh snowfall + wind: freshly generated snowdrifts

Avalanche danger is moderate.

Fresh snowdrift accumulations can be triggered by 1 person in some places above 1500 m, often medium sized. Drifts are easily recognized for the experienced. Avoid them in steep ridgeline terrain. Glide-snow avalanches are still a threat, despite lower temperatures. Where snow depths are sufficient, large-sized avalanches are possible (most medium-sized). Avoid zones below glide cracks.

Snowpack structure

On Thursday night, 5-15 cm of fresh snow expected amid strong NW winds and noticeably dropping temperatures. The fresh snow/drifts will be deposited atop a well settled snowpack, moist up to 2000 m.

Older snowdrift accumulations unlikely to trigger, only by large additional loading, otherwise the old snowpack is stable.

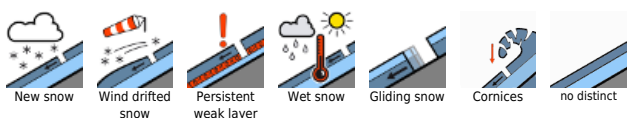
Weather

On Friday, cold at all altitudes, minor snow showers until midday, veiled summits in the morning, later dispersing. Light to moderate NW winds (50 km/hr). At 2000 m: -13 degrees.

Outlook

Avalanche danger levels will decrease.

Avalanche problems



Danger ratings

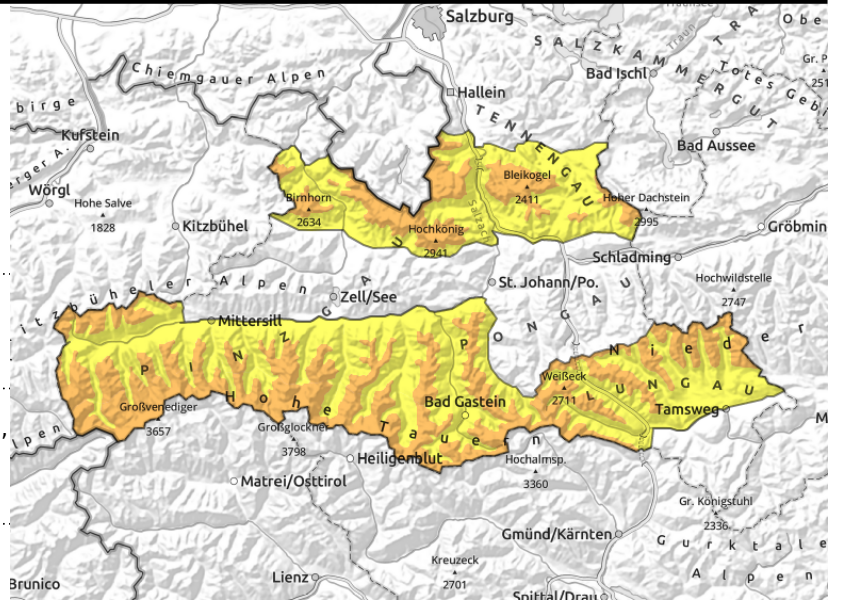


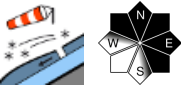
Expositions

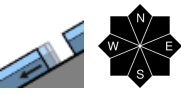


valid for: **Friday, 19.01.2024**

Glocknergruppe Nord, Glocknergruppe Alpenhauptkamm, Goldberggruppe Nord, Goldberggruppe Alpenhauptkamm, Tennengebirge, Gosaukamm, Steinernes Meer, Hochkönig, Hagengebirge, Göllstock, Loferer und Leoganger Steinberge, Oberpinzgauer Grasberge, Großvenedigergruppe Nord, Großvenedigergruppe Alpenhauptkamm, Ankogelgruppe, Muhr, Niedere Tauern Süd



 near to and distant from ridges, behind discontinuities, in gullies, steep bowls

 possible at any time of day, on extremely steep grass-covered slopes

Fresh snowfall + wind: freshly generated snowdrifts

Avalanche danger above 2000 m is considerable, below that altitude danger is moderate. Above 2000 m, fresh snowdrift accumulations lie deposited atop an unfavorable snowpack surface, can often be triggered by 1 person. Below 2000 m, danger zones are diminishing but the danger level remains moderate. Isolated remote triggerings and naturally triggered avalanches in the drifts are possible, medium-sized, drifts are easily recognized for the experienced. Avoid them in steep ridgeline terrain. When danger indicators appear, defensive conduct is called for. Also at 1500-2000 m, the fresh snowdrifts can be triggered as small slab avalanches. Isolated glide-snow avalanches are still possible. Where snow depths are sufficient, large-sized avalanches are possible (most medium-sized). Avoid zones below glide cracks.

Snowpack structure

On Thursday night, 5-15 cm of fresh snow expected amid strong NW winds and noticeably dropping temperatures. The drifts (esp. those generated by southerly foehn wind on Wednesday and Thursday) are being deposited atop large faceted crystals and surface hoar. The fresh snow/drifts will be deposited atop a well settled snowpack, moist up to 2000 m. Older snowdrift accumulations unlikely to trigger, only by large additional loading, otherwise the old snowpack is stable.

Weather

On Friday, cold at all altitudes, minor snow showers until midday, veiled summits in the morning, later dispersing. Light to moderate NW winds (50 km/hr). At 2000 m: -13 degrees, at 3000 m: -20 degrees C.

Outlook

Avalanche danger levels will decrease.

Translated by Jeffrey McCabe, www.creativtrans.com

Avalanche problems



Danger ratings



Expositions

