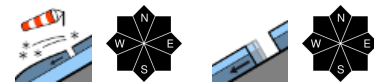


Considerable danger in places



Osterhorngruppe, Gamsfeldgruppe, Untersbergstock, Dientner Grasberge, Pongauer Grasberge, Niedere Tauern Nord, Chiemgauer Alpen, Heutal, Reiteralpe, Kitzbüheler Alpen, Glemmtal, Niedere Tauern Alpenhauptkamm



Nockberge



2000 m

Glocknergruppe Nord, Glocknergruppe Alpenhauptkamm, Goldberggruppe Nord, Goldberggruppe Alpenhauptkamm, Tennengebirge, Gosaukamm, Steinernes Meer, Hochkönig, Hagengebirge, Göllstock, Loferer und Leoganger Steinberge, Oberpinzgauer Grasberge, Großvenedigergruppe Nord, Großvenedigergruppe Alpenhauptkamm, Ankogelgruppe, Muhr, Niedere Tauern Süd



Avalanche problems



Danger ratings

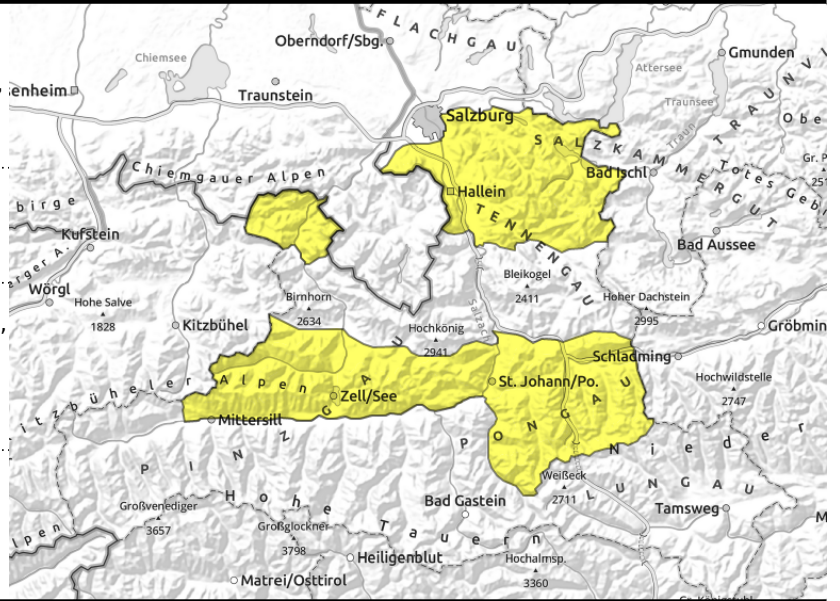


Expositions



valid for: **Thursday, 18.01.2024**

Osterhorngruppe, Gamsfeldgruppe, Untersbergstock, Dientner Grasberge, Pongauer Grasberge, Niedere Tauern Nord, Chiemgauer Alpen, Heutal, Reiteralpe, Kitzbüheler Alpen, Glemmtal, Niedere Tauern Alpenhauptkamm



near to and distant from ridges, behind discontinuities, near wooded zones, in gullies, atop unfavorable base



on extremely steep grass-covered slopes

Rising temperatures, often trigger-prone snowdrift accumulations

Avalanche danger is moderate.

Fresh snowdrift accumulations can be triggered by 1 person in some places above 1800 m, often medium sized. Danger zones increase with ascending altitude, the drifts are easily recognized for the experienced. Avoid them in steep ridgeline terrain (>30°).

Due to rain impact up to above 2000 m, glide-snow activity will increase slightly. Where snow depths are sufficient, large-sized avalanches are possible (most medium-sized). Avoid zones below glide cracks.

Due to rain impact, naturally triggered loose-snow avalanches can be expected in extremely steep terrain, mostly small-sized releases.

Snowpack structure

On Wednesday night, 5-15 cm of fresh snow is expected, accompanied by wind. Fresh and older snowdrift accumulations have been deposited atop soft layers of facted crystals and atop surface hoar: these are trigger-prone weak layers, the drifts constitute the slab.

Older snowdrift accumulations unlikely to trigger, only by large additional loading, otherwise the old snowpack is stable.

Due to rainfall the surface layers will forfeit their firmness.

The ground is warm, reinforcing the tendency of the entire snowpack to glide downhill over smooth ground (rocks, grass).

Weather

On Thursday, clouds will disperse in the morning hours, intermittent sunshine is expected. Dry until evening. Winds light. At 2000 m: +1 degree. On Thursday night: snowfall and measurably dropping temperatures.

Outlook

Avalanche danger levels are not expected to change significantly.

Avalanche problems



Danger ratings



Expositions



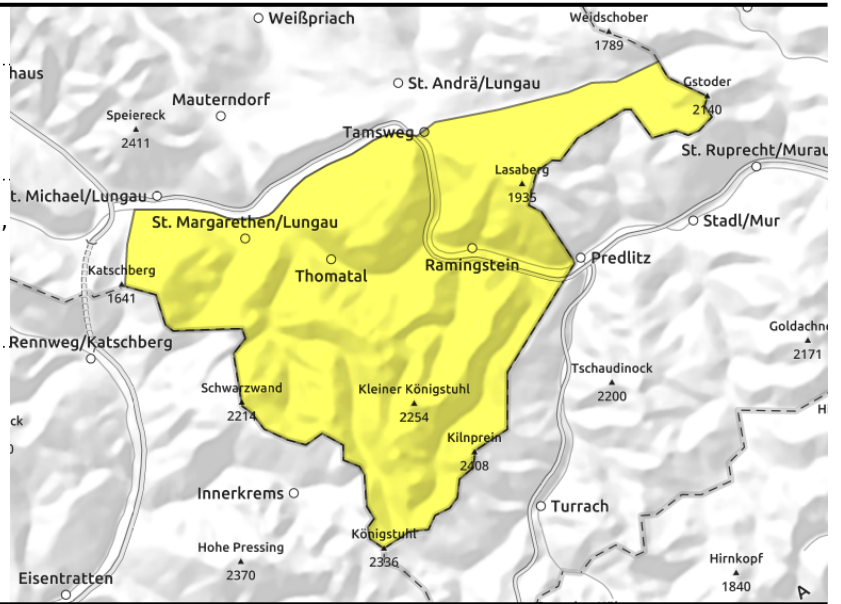
Nockberge



near to and distant from ridges, behind discontinuities, near wooded zones, in gullies, atop unfavorable base



on extremely steep grass-covered slopes



Rising temperatures, often trigger-prone snowdrift accumulations

Avalanche danger is moderate.

Fresh snowdrift accumulations can be triggered by 1 person in some places above 1800 m, often medium sized. Danger zones increase with ascending altitude, the drifts are easily recognized for the experienced. Avoid them in steep ridgeline terrain (>30°).

Due to rain impact up to above 2000 m, glide-snow activity will increase slightly. Where snow depths are sufficient, large-sized avalanches are possible (most medium-sized). Avoid zones below glide cracks.

Due to rain impact, naturally triggered loose-snow avalanches can be expected in extremely steep terrain, mostly small-sized releases.

Snowpack structure

On Wednesday night, 5-15 cm of fresh snow is expected, accompanied by wind. Fresh and older snowdrift accumulations have been deposited atop soft layers of facted crystals and atop surface hoar: these are trigger-prone weak layers, the drifts constitute the slab.

Older snowdrift accumulations unlikely to trigger, only by large additional loading, otherwise the old snowpack is stable.

Due to rainfall the surface layers will forfeit their firmness.

The ground is warm, reinforcing the tendency of the entire snowpack to glide downhill over smooth ground (rocks, grass).

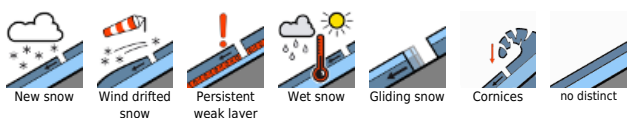
Weather

On Thursday, clouds will disperse in the morning hours, intermittent sunshine is expected. Dry until evening. Winds light. At 2000 m: +1 degree. On Thursday night: snowfall and measurably dropping temperatures.

Outlook

Avalanche danger levels are not expected to change significantly.

Avalanche problems



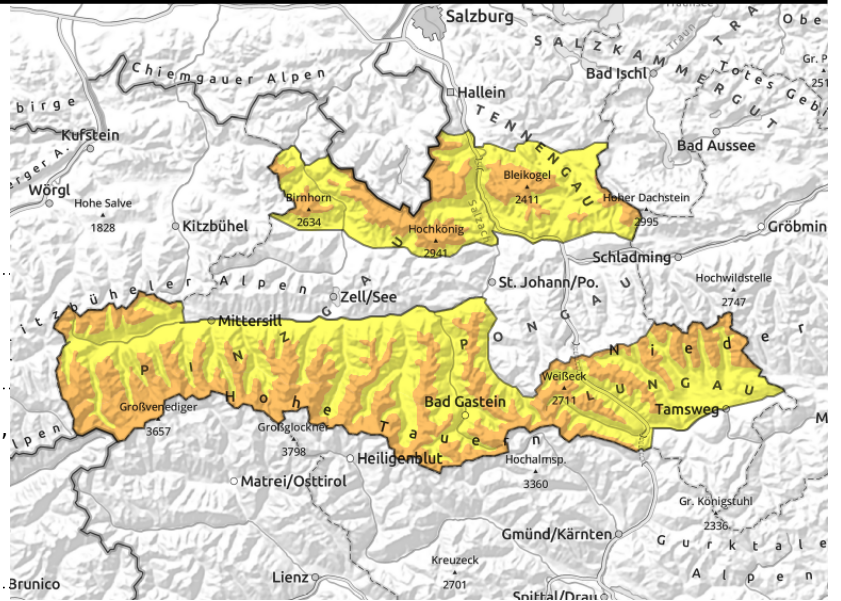
Danger ratings



Expositions



Glocknergruppe Nord, Glocknergruppe Alpenhauptkamm, Goldberggruppe Nord, Goldberggruppe Alpenhauptkamm, Tennengebirge, Gosaukamm, Steinernes Meer, Hochkönig, Hagengebirge, Göllstock, Loferer und Leoganger Steinberge, Oberpinzgauer Grasberge, Großvenedigergruppe Nord, Großvenedigergruppe Alpenhauptkamm, Ankogelgruppe, Muhr, Niedere Tauern Süd



near to and distant from ridges, behind discontinuities, near wooded zones, in gullies, atop unfavorable base, in gullies of all aspects



possible at any time of day, on extremely steep grass-covered slopes

Rising temperatures, often trigger-prone snowdrift accumulations

Avalanche danger above 2000 m is considerable, below that altitude danger is moderate. Above 2000 m, fresh snowdrift accumulations lie deposited atop an unfavorable snowpack surface, can often be triggered by 1 person. Below 2000 m, danger zones are diminishing but the danger level remains moderate. Isolated remote triggerings and naturally triggered avalanches in the drifts are possible, medium-sized, drifts are easily recognized for the experienced. Avoid them in steep ridgeline terrain ($>30^\circ$).

Due to rain impact up to above 2000 m, glide-snow activity will increase slightly. Where snow depths are sufficient, large-sized avalanches are possible (most medium-sized). Avoid zones below glide cracks.

Due to rain impact, naturally triggered loose-snow avalanches can be expected in extremely steep terrain, mostly small-sized releases.

Snowpack structure

On Wednesday night, 5-15 cm of fresh snow is expected, accompanied by wind. Fresh and older snowdrift accumulations have been deposited atop soft layers of facted crystals and atop surface hoar: these are trigger-prone weak layers, the drifts constitute the slab.

Older snowdrift accumulations unlikely to trigger, only by large additional loading, otherwise the old snowpack is stable.

Due to rainfall the surface layers will forfeit their firmness.

The ground is warm, reinforcing the tendency of the entire snowpack to glide downhill over smooth ground (rocks, grass).

Weather

On Thursday, clouds will disperse in the morning hours, intermittent sunshine is expected. Dry until evening. At high altitudes in the Tauern, strong-to-brisk southerly winds, elsewhere winds are mostly light. At 2000 m: +1 degree. On Thursday night: snowfall and measurably dropping temperatures.

Avalanche problems



Danger ratings



Expositions



Outlook

Avalanche danger levels are not expected to change significantly.

Translated by Jeffrey McCabe, www.creativtrans.com

Avalanche problems



Danger ratings



Expositions

