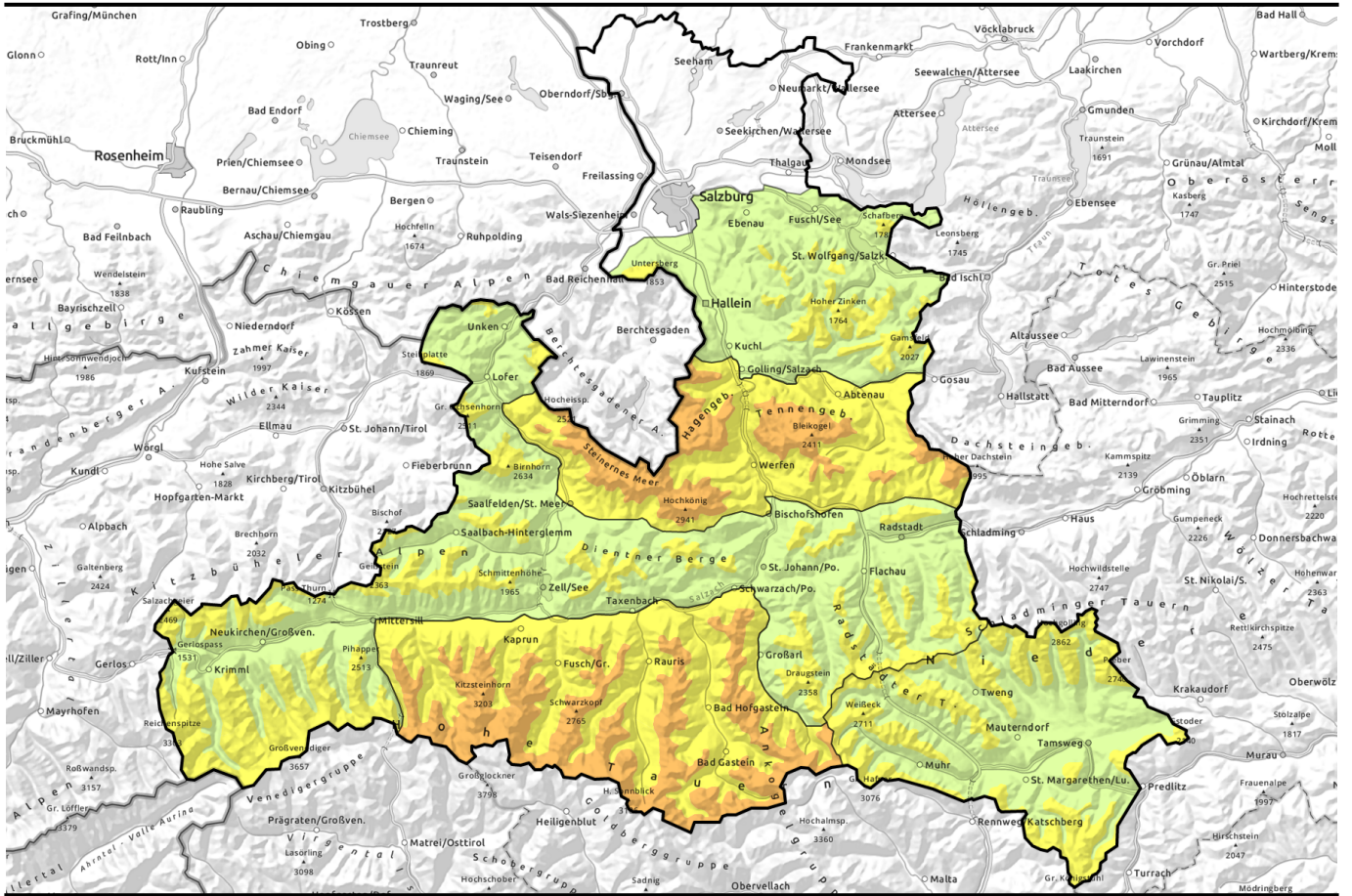


valid for: **Tuesday, 16.01.2024**



UPDATE: Considerable danger in places due to fresh snow and wind

	<p>forestline</p>	<p>Osterhorngruppe, Gamsfeldgruppe, Untersbergstock, Dientner Grasberge, Pongauer Grasberge, Niedere Tauern Nord, Chiemgauer Alpen, Heutal, Reiteralpe, Kitzbüheler Alpen, Glemmtal, Oberpinzgauer Grasberge, Loferer und Leoganger Steinberge, Niedere Tauern Alpenhauptkamm, Großvenedigergruppe Alpenhauptkamm, Großvenedigergruppe Nord</p>	
	<p>forestline</p>	<p>Nockberge, Ankogelgruppe, Muhr, Niedere Tauern Süd</p>	
	<p>forestline</p>	<p>Glocknergruppe Nord, Glocknergruppe Alpenhauptkamm, Goldberggruppe Nord, Goldberggruppe Alpenhauptkamm, Tennengebirge, Gosaukamm, Steinernes Meer, Hochkönig, Hagengebirge, Göllstock</p>	

Avalanche problems



Danger ratings

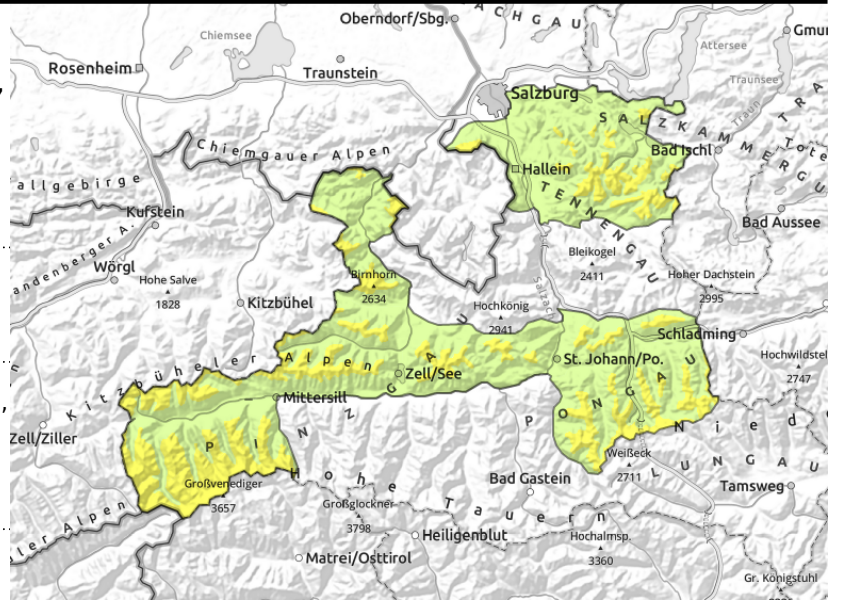


Expositions



valid for: **Tuesday, 16.01.2024**

Osterhorngruppe, Gamsfeldgruppe, Untersbergstock, Dientner Grasberge, Pongauer Grasberge, Niedere Tauern Nord, Chiemgauer Alpen, Heutal, Reiteralpe, Kitzbüheler Alpen, Glemmtal, Oberpinzgauer Grasberge, Loferer und Leoganger Steinberge, Niedere Tauern Alpenhauptkamm, Großvenedigergruppe Alpenhauptkamm, Großvenedigergruppe Nord



forestline



near to and distant from ridges, behind discontinuities, near wooded zones, in gullies, atop unfavorable base



on extremely steep grass-covered slopes

Snowdrift accumulations trigger-sensitive

Avalanche danger above the treeline and near wooded zones is moderate, below that altitude danger is low.

Fresh snowdrift accumulations can be triggered by 1 person in some places, often small releases, sometimes medium. Particularly near wooded zones, the drifts can be deposited on surface hoar and very trigger-prone. Older drifts usually triggerable only by large additional loading. The drifts are easily recognized for the experienced. Avoid them in steep ridgeline terrain (>30°). When danger signs such as shooting cracks and whumpf noises appear, defensive conduct is recommended. Danger of naturally triggered glide-snow avalanches persists. Where snow is deep enough, they can reach medium size. Avoid zones below glide cracks.

Snowpack structure

The snowpack surface is covered with surface hoar where the terrain is wind-protected. The loose recent snowfall from the weekend is still loosely packed. Snowdrifts are found in all aspects due to shifting winds. Large crystals and surface hoar have formed a weak layer, the drifts constitute the slab.

The old snowpack is largely stable.

The snow base is still moist, reinforcing the tendency of the entire snowpack to glide downhill over smooth ground (rocks, grass).

Weather

On Tuesday, initially reduced visibility due to heavy clouds, soon dispersing and showing the sun. As of midday, more clouds, moderate-to-brisk westerly winds. At 2000 m. -12 to -6 degrees; at 3000 m: -18 to -10 degrees.

Outlook

Avalanche danger levels increasing due to wind and some snowfall as Wednesday approaches.

Avalanche problems



Danger ratings



Expositions



valid for: **Tuesday, 16.01.2024**

Nockberge, Ankogelgruppe, Muhr, Niedere Tauern Süd



forestline



near to and distant from ridges, behind discontinuities, near wooded zones, in gullies, atop unfavorable base



on extremely steep grass-covered slopes



Snowdrift accumulations trigger-sensitive in places

Avalanche danger above above the treeline is moderate, below that altitude danger is low. Fresh snowdrift accumulations can be triggered by 1 person in some places, often small releases, sometimes medium. Particularly near wooded zones, the drifts can be deposited on surface hoar and very trigger-prone. Older drifts usually triggerable only be large additional loading. The drifts are easily recognized for the experienced. Avoid them in steep ridgeline terrain (>30°). A certain danger of naturally triggered glide-snow avalanches persists. Where snow is deep enough, they can reach medium size. Avoid zones below glide cracks.

Snowpack structure

The snowpack surface is lavishly covered with surface hoar where the terrain is wind-protected. The loose recent snowfall from the weekend is still loosely packed. Snowdrifts are found in all aspects due to shifting winds. Large crystals and surface hoar have formed a weak layer, the drifts constitute the slab.

The old snowpack is largely stable.

The snow base is still moist, reinforcing the tendency of the entire snowpack to glide downhill over smooth ground (rocks, grass).

Weather

On Tuesday, initially reduced visibility due to heavy clouds, soon dispersing and showing the sun. As of midday, more clouds, moderate-to-brisk westerly winds. At 2000 m. -12 to -6 degrees; at 3000 m: -18 to -10 degrees.

Outlook

Avalanche danger levels increasing on Main Ridge due to wind and some snowfall as Wednesday approaches.

Avalanche problems



Danger ratings

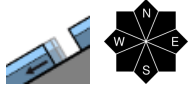
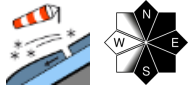
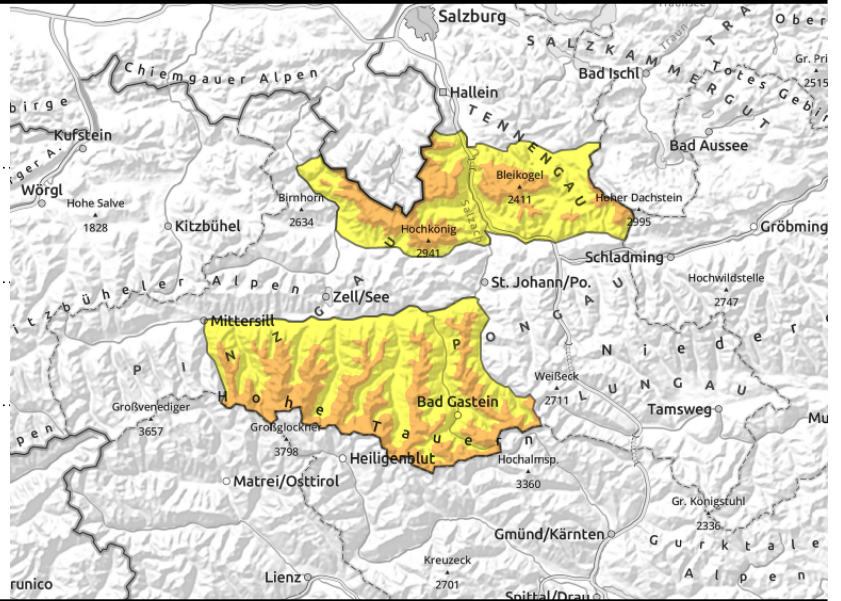


Expositions



valid for: **Tuesday, 16.01.2024**

Glocknergruppe Nord, Glocknergruppe Alpenhauptkamm, Goldberggruppe Nord, Goldberggruppe Alpenhauptkamm, Tennengebirge, Gosaukamm, Steinernes Meer, Hochkönig, Hagengebirge, Göllstock



Snowdrift accumulations trigger-prone

Avalanche danger above above the treeline and near wooded zones is considerable, below that altitude danger is moderate. Fresh snowdrift accumulations can be triggered by 1 person in some places, often small releases, sometimes medium. Particularly near wooded zones, the drifts can be deposited on surface hoar and very trigger-prone. Older drifts usually triggerable only be large additional loading. The drifts are easily recognized for the experienced. Avoid them in steep ridgeline terrain (>30°). When danger signs such as shooting cracks and whumpf noises appear, defensive conduct is recommended. Danger of naturally triggered glide-snow avalanches persists. Where snow is deep enough, they can reach medium size. Avoid zones below glide cracks.

Snowpack structure

The snowpack surface is covered with surface hoar where the terrain is wind-protected. The loose recent snowfall from the weekend is still loosely packed. Snowdrifts are found in all aspects due to shifting winds. Large crystals and surface hoar have formed a weak layer, the drifts constitute the slab.

The old snowpack is largely stable.

The snow base is still moist, reinforcing the tendency of the entire snowpack to glide downhill over smooth ground (rocks, grass).

Weather

On Tuesday, initially reduced visibility due to heavy clouds, soon dispersing and showing the sun. As of midday, more clouds, moderate-to-brisk westerly winds. At 2000 m. -12 to -6 degrees; at 3000 m: -18 to -10 degrees.

Outlook

Avalanche danger levels increasing due to wind and some snowfall as Wednesday approaches.

Translated by Jeffrey McCabe, www.creativtrans.com

Avalanche problems



Danger ratings



Expositions

