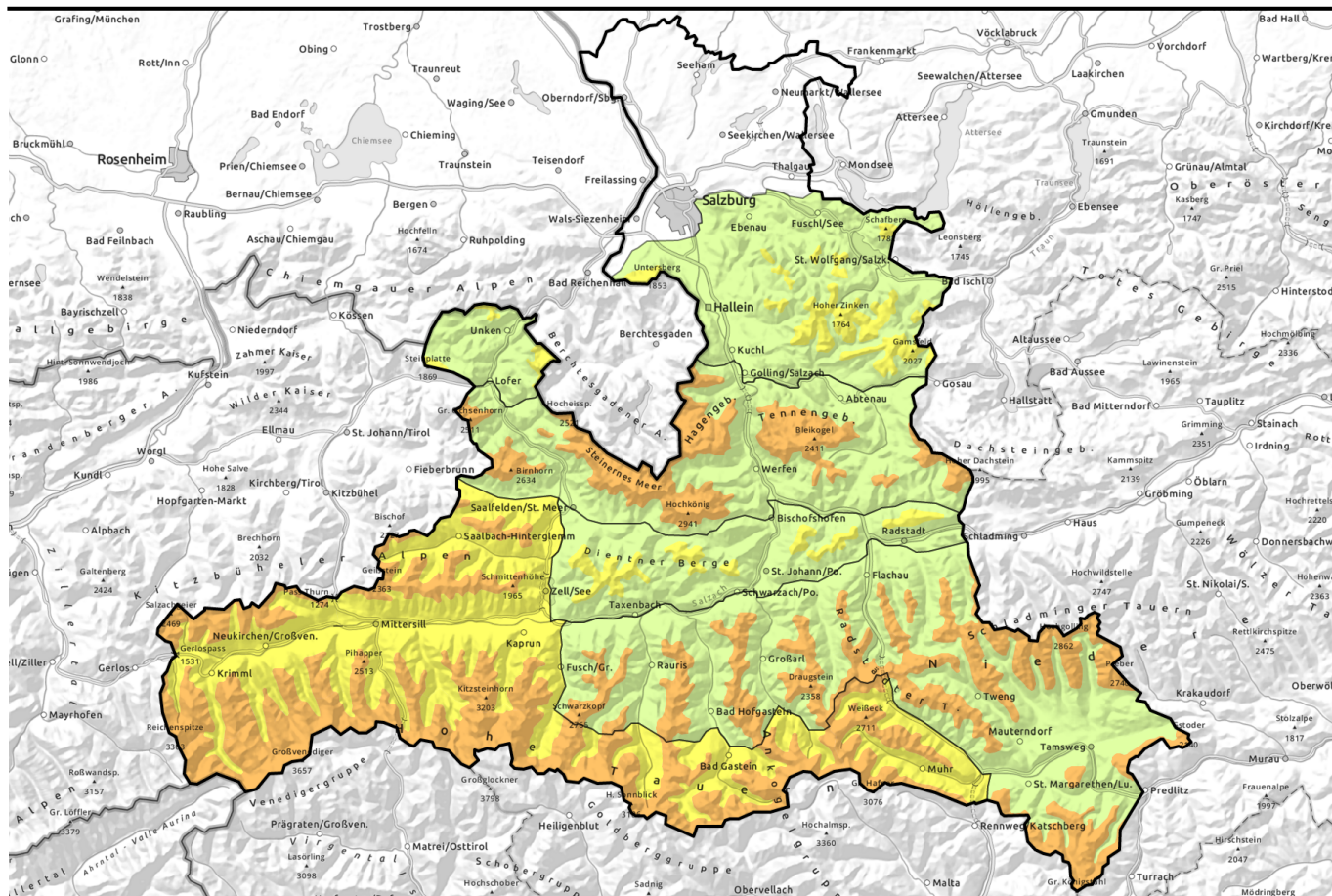


valid for: **Sunday, 07.01.2024**



## UPDATE: slight wind impact makes snow prone to triggering, danger zones unrecognizable

	<p>1600 m Osterhorngruppe, Gamsfeldgruppe, Untersbergstock, Chiemgauer Alpen, Heutal, Reiteralpe, Dientner Grasberge, Pongauer Grasberge</p>	
	<p>1800 m Loferer und Leoganger Steinberge, Steinernes Meer, Hochkönig, Hagengebirge, Göllstock, Tennengebirge, Gosaukamm, Niedere Tauern Nord, Niedere Tauern Alpenhauptkamm, Goldberggruppe Nord, Nockberge</p>	
	<p>2000 m Großvenedigergruppe Nord, Großvenedigergruppe Alpenhauptkamm, Glocknergruppe Nord, Glocknergruppe Alpenhauptkamm, Goldberggruppe Alpenhauptkamm, Ankogelgruppe, Muhr, Oberpinzgauer Grasberge, Kitzbüheler Alpen, Glemmtal</p>	

### Avalanche problems



### Danger ratings

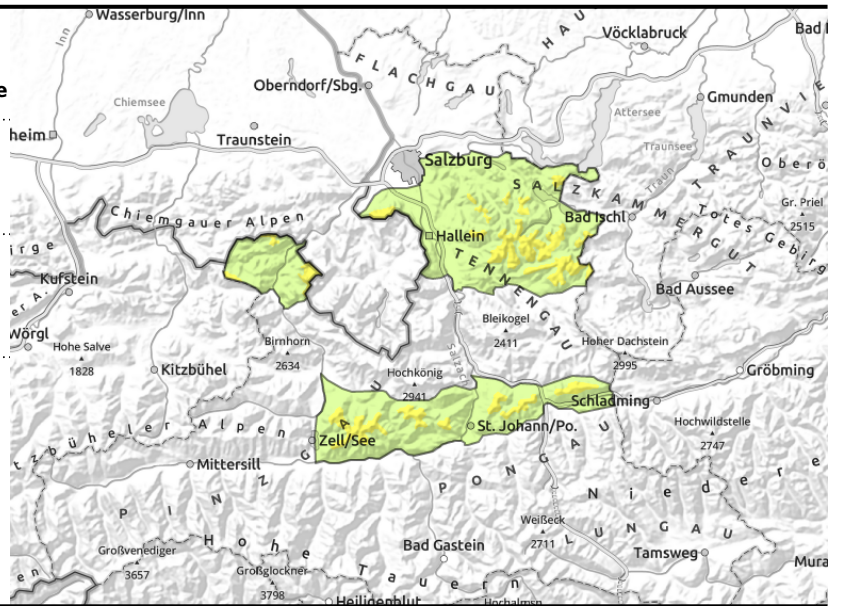
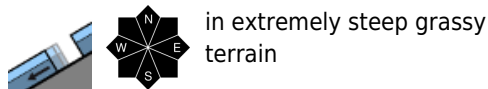


### Expositions



valid for: **Sunday, 07.01.2024**

**Osterhorngruppe, Gamsfeldgruppe,  
Untersbergstock, Chiemgauer Alpen, Heutal,  
Reiteralpe, Dientner Grasberge, Pongauer Grasberge**



### Danger zones unrecognizable

Avalanche danger above 1600 m is moderate, below that altitude danger is low.  
 Fresh snow with little wind: danger zones hard to spot, avalanches can be triggered even by 1 person in steep terrain, and reach medium size.  
 Danger of naturally triggered glide-snow avalanches persists. Where snow is deep enough, they can reach medium size. Avoid zones below glide cracks.

### Snowpack structure

By Sunday morning 15 cm of fresh snow fell widespread (most in western regions), more will be added to it during the daytime, mostly unbonded. Brittle snowdrifts can be deposited on leeward slopes. Weak layers lie inside the fresh snow. The snowfall from Saturday fell on a largely stable snowpack. Due to the irregularity of the surface (wind-compressed, icy, windblown, loose) the weak layers are unlikely to be extensive.  
 The old snowpack base is moist. The warm ground is reinforcing the gliding movement of the snowpack downhill.

### Weather

On Sunday poor visibility, clouds and fog will dominate, repeated snowfall, by evening an additional 10 cm is expected. The northerly winds will be light. Temperatures will drop further. At 2000 m: from -7 to -10 degrees; at 3000 m: -10 degrees.

### Outlook

Avalanche danger levels are not expected to change significantly.

#### Avalanche problems



#### Danger ratings

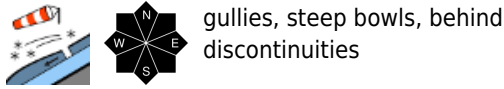
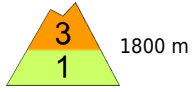
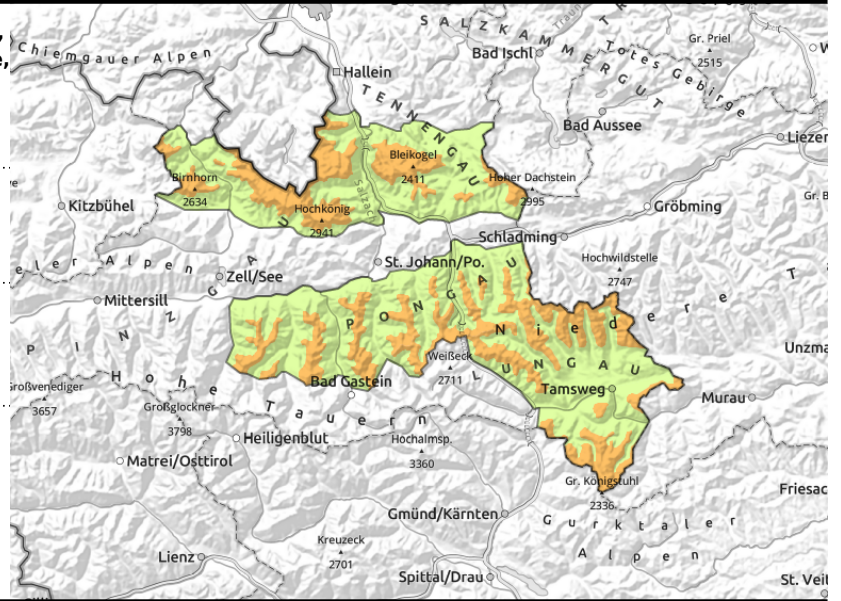


#### Expositions

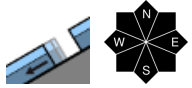


valid for: **Sunday, 07.01.2024**

**Loferer und Leoganger Steinberge, Steinernes Meer, Hochkönig, Hagengebirge, Göllstock, Tennengebirge, Gosaukamm, Niedere Tauern Nord, Niedere Tauern Süd, Niedere Tauern Alpenhauptkamm, Goldberggruppe Nord, Nockberge**



gullies, steep bowls, behind discontinuities



in extremely steep grassy terrain

**Evaluate fresh snowdrifts with caution, bonded snow easily triggered**

Avalanche danger above 1800 m is moderate, below that altitude danger is low. Freshly generated snowdrifts in steep gullies and bowls and behind discontinuities can be easily triggered. Avalanches can reach medium size. Due to further snowfall and little wind, danger zones cannot be spotted. Fresh drifts can be triggered even by 1 person in steep terrain, and reach medium size. Frequency of danger zones increases with ascending altitude, danger also rises as day progresses. Danger of naturally triggered glide-snow avalanches persists. Where snow is deep enough, they can reach medium size. Avoid zones below glide cracks.

**Snowpack structure**

By Sunday morning 15 cm of fresh snow fell widespread (focus in western regions), more will be added to it during the daytime, mostly unbonded. Brittle snowdrifts can be deposited on leeward slopes. Weak layers lie inside the fresh snow. The snowfall from Saturday fell on a largely stable snowpack. Due to the irregularity of the surface (wind-compressed, icy, windblown, loose) the weak layers are unlikely to be extensive. The old snowpack base is moist. The warm ground is reinforcing the gliding movement of the snowpack downhill.

**Weather**

On Sunday poor visibility, clouds and fog will dominate, repeated snowfall, by evening an additional 10 cm is expected (hardly any snowfall on the southern flank of the Alps). Visibility somewhat better in Lungau. The northerly winds will be light. Temperatures will drop further. At 2000 m: from -7 to -10 degrees; at 3000 m: -10 degrees.

**Outlook**

Avalanche danger levels are not expected to change significantly.

**Avalanche problems**



**Danger ratings**

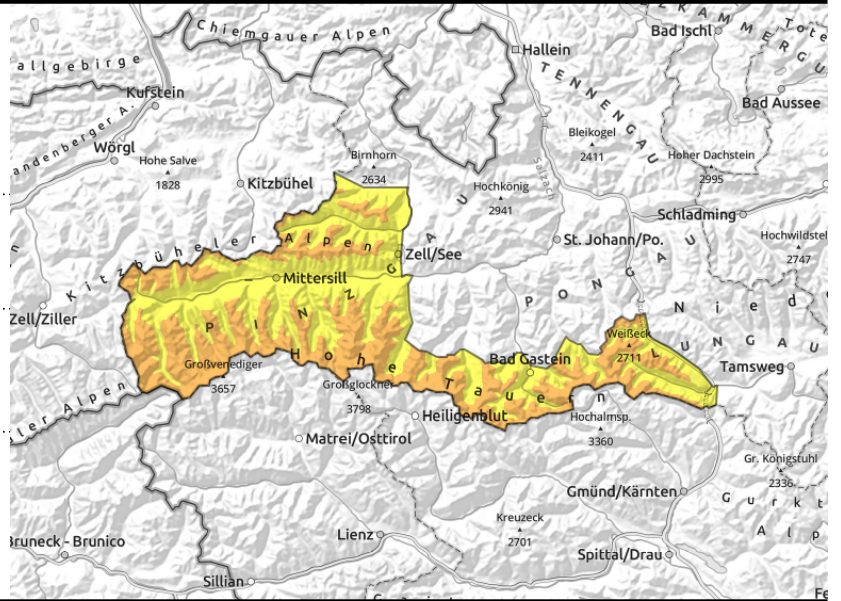


**Expositions**



valid for: **Sunday, 07.01.2024**

Großvenedigergruppe Nord, Großvenedigergruppe Alpenhauptkamm, Glocknergruppe Nord, Glocknergruppe Alpenhauptkamm, Goldberggruppe Alpenhauptkamm, Ankogelgruppe, Muhr, Oberpinzgauer Grasberge, Kitzbüheler Alpen, Glemmtal



2000 m



gullies, steep bowls, behind discontinuities



in extremely steep grassy terrain

### Beware fresh snowdrifts. Danger zones often unrecognizable.

Avalanche danger above 2200 m is considerable, below that altitude danger is moderate. Older and fresh drifts can be triggered even by 1 person in steep terrain, and reach medium size. Increasing danger zones due to shifting winds. Frequency of danger zones increases with ascending altitude, danger also rises as day progresses. At high altitudes, slabs can trigger from deeper snowpack layers, generally medium sized. Danger of naturally triggered glide-snow avalanches persists below 2300 m. Where snow is deep enough, they can reach medium size. Avoid zones below glide cracks.

### Snowpack structure

By Sunday morning 15 cm of fresh snow fell widespread (focus in western regions), more will be added to it during the daytime, mostly unbonded. Brittle snowdrifts can be deposited on leeward slopes. Weak layers lie inside the fresh snow. The snowfall from Saturday fell on a largely stable snowpack. Due to the irregularity of the surface (wind-compressed, icy, windblown, loose) the weak layers are unlikely to be extensive. The old snowpack base is moist. The warm ground is reinforcing the gliding movement of the snowpack downhill.

### Weather

On Sunday poor visibility, clouds and fog will dominate, repeated snowfall, by evening an additional 10 cm is expected. The northerly winds will be light. Temperatures will drop further. At 2000 m: from -7 to -10 degrees; at 3000 m: -10 degrees.

### Outlook

Avalanche danger levels are not expected to change significantly.

Translated by Jeffrey McCabe, [www.creativtrans.com](http://www.creativtrans.com)

#### Avalanche problems



#### Danger ratings



#### Expositions

