

Fresh snow, light-to-moderate winds, danger zones often unrecognizable

	<p>1600 m</p>	<p>Osterhorngruppe, Gamsfeldgruppe, Untersbergstock, Chiemgauer Alpen, Heutal, Reiteralpe, Oberpinzgauer Grasberge, Kitzbüheler Alpen, Glemmtal, Dientner Grasberge, Pongauer Grasberge</p>	
	<p>1600 m</p>	<p>Loferer und Leoganger Steinberge, Steinernes Meer, Hochkönig, Hagengebirge, Göllstock, Tennengebirge, Gosaukamm, Niedere Tauern Nord, Niedere Tauern Süd, Niedere Tauern Alpenhauptkamm, Nockberge, Goldberggruppe Nord</p>	
	<p>2200 m</p>	<p>Großenedigergruppe Nord, Großenedigergruppe Alpenhauptkamm, Glocknergruppe Nord, Glocknergruppe Alpenhauptkamm, Goldberggruppe Alpenhauptkamm, Ankogelgruppe, Muhr</p>	

Avalanche problems



Danger ratings

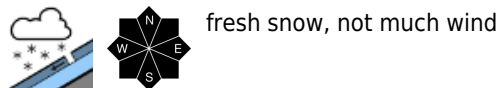


Expositions

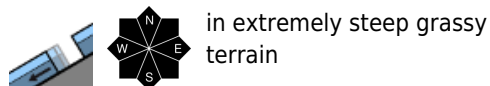


valid for: **Saturday, 06.01.2024**

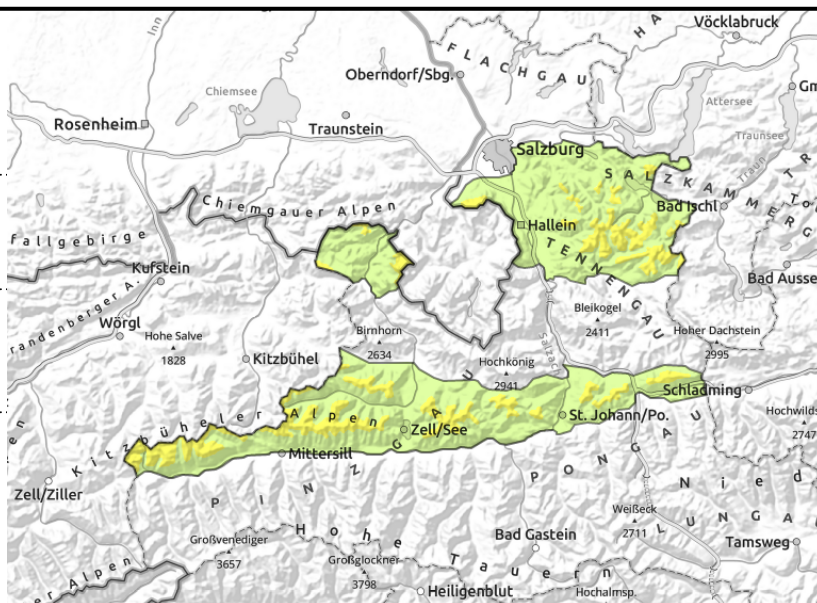
Osterhorngruppe, Gamsfeldgruppe, Untersbergstock, Chiemgauer Alpen, Heutal, Reiteralpe, Oberpinzgauer Grasberge, Kitzbüheler Alpen, Glemmtal, Dientner Grasberge, Pongauer Grasberge



fresh snow, not much wind



in extremely steep grassy terrain



Danger zones unrecognizable

Avalanche danger above 1600 m is moderate, below that altitude danger is low.

Fresh snow with little wind: danger zones hard to spot, avalanches can be triggered even by 1 person in steep terrain, and reach medium size.

Danger of naturally triggered glide-snow avalanches persists. Where snow is deep enough, they can reach medium size. Avoid zones below glide cracks.

Snowpack structure

The fresh snow is being deposited on a stable old snowpack. Snowfall level is dropping. Bonding of fresh snow to old snow often good except where it falls on a loose old snowpack surface. No marked large weak layer is evident

The old snowpack base is moist. The warm ground is reinforcing the gliding movement of the snowpack downhill.

Weather

After midnight, snowfall will set in (by morning: 5 cm above 1500 m). On Saturday, reduced visibility. Rainfall in the north up to 1000 m, snowfall level dropping to low lying areas by evening.

By evening, 10-20 cm of fresh snow expected (more in the west). Light NW/NE winds. At 2000 m: -3 to -6 degrees; at 3000 m: -7 to -11 degrees.

Outlook

Avalanche danger levels are not expected to change significantly.

Avalanche problems



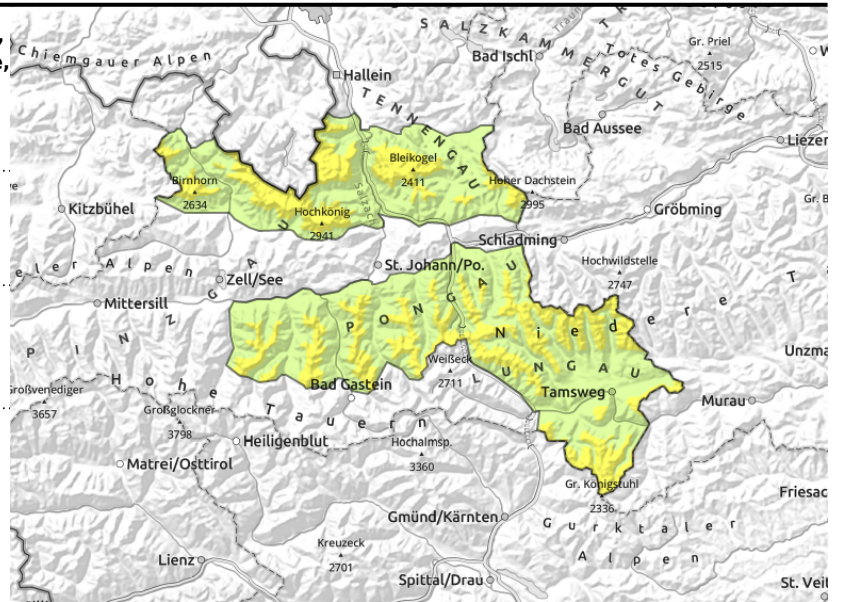
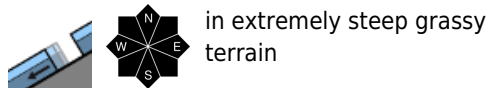
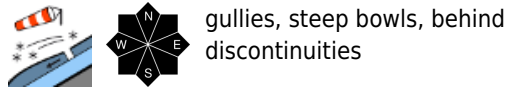
Danger ratings



Expositions



Loferer und Leoganger Steinberge, Steinernes Meer, Hochkönig, Hagengebirge, Göllstock, Tennengebirge, Gosaukamm, Niedere Tauern Nord, Niedere Tauern Süd, Niedere Tauern Alpenhauptkamm, Nockberge, Goldberggruppe Nord



Danger zones unrecognizable

Avalanche danger above 1600 m is moderate, below that altitude danger is low.

Fresh drifts can be triggered even by 1 person in steep terrain, and reach medium size. Frequency of danger zones increases with ascending altitude, danger also rises as day progresses.

Danger of naturally triggered glide-snow avalanches persists. Where snow is deep enough, they can reach medium size. Avoid zones below glide cracks.

Snowpack structure

The fresh snow is being deposited on a stable old snowpack. Snowfall level is dropping. Bonding of fresh snow to old snow often good except where it falls on a loose old snowpack surface. No marked large weak layer is evident

The old snowpack base is moist. The warm ground is reinforcing the gliding movement of the snowpack downhill.

Weather

After midnight, snowfall will set in (by morning: 5 cm above 1500 m). On Saturday, reduced visibility. Rainfall in the north up to 1000 m, snowfall level dropping to low lying areas by evening.

By evening, 10-20 cm of fresh snow expected (more in the west). Light NW/NE winds. At 2000 m: -3 to -6 degrees; at 3000 m: -7 to -11 degrees.

Outlook

Avalanche danger levels are not expected to change significantly.

Avalanche problems



Danger ratings

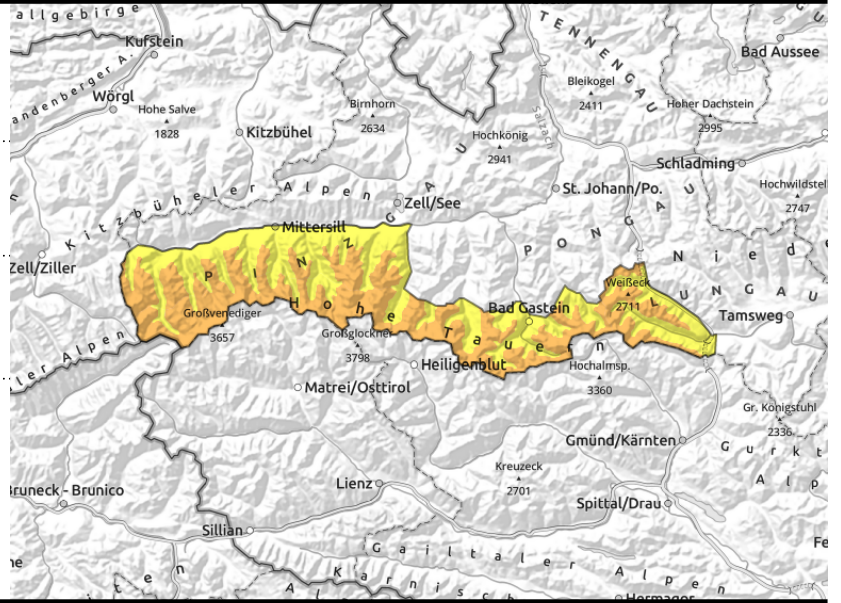


Expositions



valid for: **Saturday, 06.01.2024**

Großvenedigergruppe Nord, Großvenedigergruppe Alpenhauptkamm, Glocknergruppe Nord, Glocknergruppe Alpenhauptkamm, Goldberggruppe Alpenhauptkamm, Ankogelgruppe, Muhr



2200 m



gullies, steep bowls, behind discontinuities



in extremely steep grassy terrain

Rising danger as snowfall increases. Danger zones unrecognizable

Avalanche danger above 2200 m is considerable, below that altitude danger is moderate. Fresh drifts can be triggered even by 1 person in steep terrain, and reach medium size. Increasing danger zones due to shifting winds. Frequency of danger zones increases with ascending altitude, danger also rises as day progresses. At high altitudes, slabs can trigger from deeper snowpack layers, generally medium sized. Danger of naturally triggered glide-snow avalanches persists. Where snow is deep enough, they can reach medium size. Avoid zones below glide cracks.

Snowpack structure

On shady slopes, bonding is poor, there are also weak layers inside the fresh snow. On shady high-altitude slopes there are faceted layers clinging to embedded crusts, often triggerable. No marked large weak layer is evident. The old snowpack base is moist. The warm ground is reinforcing the gliding movement of the snowpack downhill.

Weather

After midnight, snowfall will set in (by morning: 5 cm above 1500 m). On Saturday, reduced visibility. Rainfall in the north up to 1000 m, snowfall level dropping to low lying areas by evening. By evening, 10-20 cm of fresh snow expected (more in the west). Light NW/NE winds. At 2000 m: -3 to -6 degrees; at 3000 m: -7 to -11 degrees.

Outlook

Avalanche danger levels are not expected to change significantly.

Translated by Jeffrey McCabe, www.creativtrans.com

Avalanche problems



Danger ratings



Expositions

