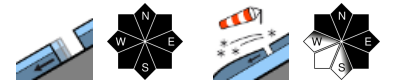


Some fresh snowdrifts



Osterhorngruppe, Gamsfeldgruppe, Untersbergstock, Chiemgauer Alpen, Heutal, Reiteralpe, Kitzbüheler Alpen, Glemmtal, Oberpinzgauer Grasberge, Dientner Grasberge, Pongauer Grasberge, Niedere Tauern Nord



2000 m

Loferer und Leoganger Steinberge, Steinernes Meer, Hochkönig, Hagengebirge, Göllstock, Tennengebirge, Gosaukamm, Großvenedigergruppe Nord, Großvenedigergruppe Alpenhauptkamm, Glocknergruppe Nord, Glocknergruppe Alpenhauptkamm, Goldberggruppe Nord, Goldberggruppe Alpenhauptkamm, Niedere Tauern Alpenhauptkamm, Ankogelgruppe, Muhr, Niedere Tauern Süd, Nockberge



Avalanche problems



Danger ratings

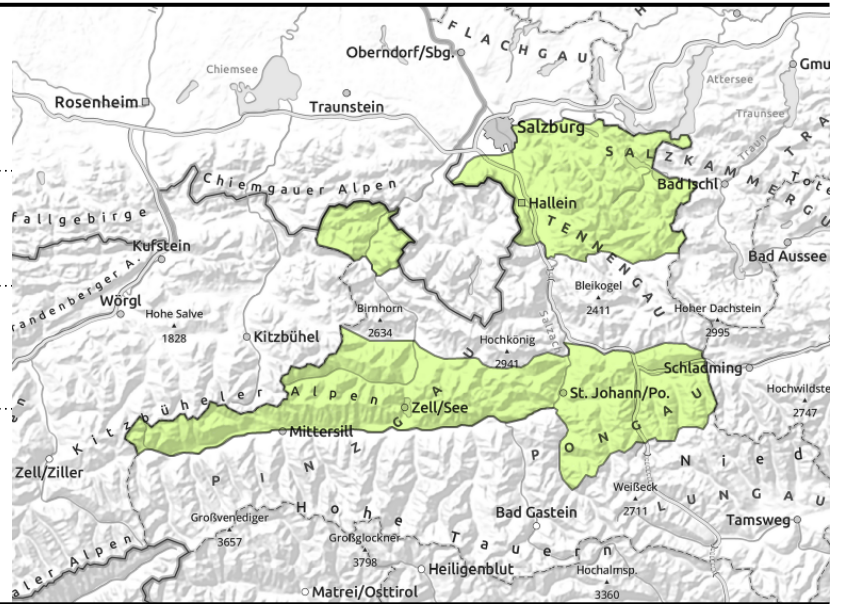


Expositions



valid for: **Friday, 05.01.2024**

Osterhorngruppe, Gamsfeldgruppe, Untersbergstock, Chiemgauer Alpen, Heutal, Reiteralpe, Kitzbüheler Alpen, Glemmtal, Oberpinzgauer Grasberge, Dientner Grasberge, Pongauer Grasberge, Niedere Tauern Nord



in isolated cases in steep grassy terrain



icy patches can break, acute risk of falling

Isolated glide-snow avalanches + some drifts

Avalanche danger is low.

Isolated small glide-snow avalanches can release on steep grass-covered slopes. Avoid zones below glide cracks.

The fresh snowdrifts (near to and distant from ridges) are mostly hardened and difficult to trigger (esp. on extended N/E facing slopes). The thin patches can break and possible trigger a small slab above the treeline.

Snowpack structure

The surface is highly varied, wind-compressed or icy or powder. Crests and ridges are completely windblown. Settled powder is found in some shady terrain where neither NW nor S winds have prevailed.

The old snowpack base is stable and thoroughly wet up to intermediate altitudes. The warm ground leads to the entire snowpack gliding downhill over smooth ground.

Weather

Heavy clouds will pass through, create diffuse light conditions, but the peaks will mostly remain in the clear. The S/W winds will be light to moderate. At 2000 m: -4 to +2 degrees.

Outlook

The snowfall on the weekend will blanket danger zones and can release on extremely steep slopes as a loose-snow avalanche.

Avalanche problems



Danger ratings

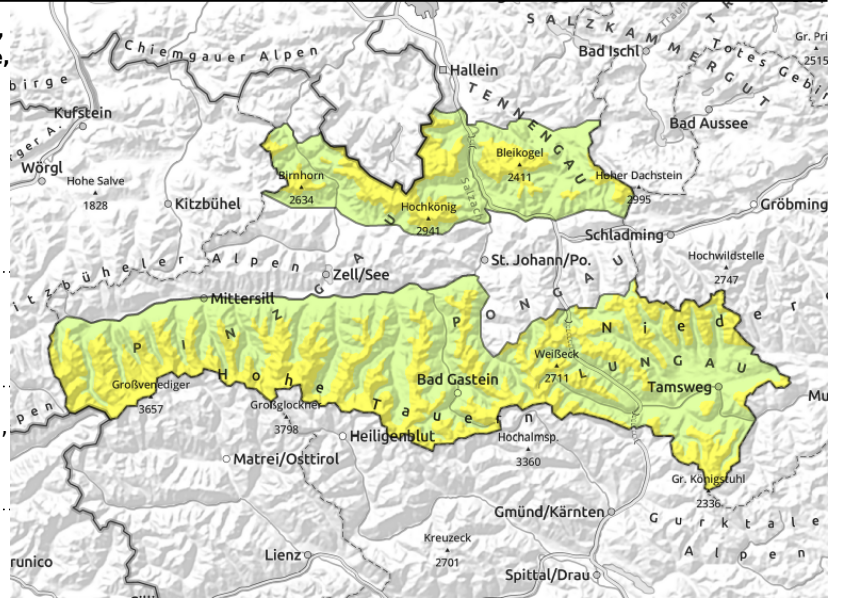


Expositions



valid for: **Friday, 05.01.2024**

Loferer und Leoganger Steinberge, Steinernes Meer, Hochkönig, Hagengebirge, Göllstock, Tennengebirge, Gosaukamm, Großvenedigergruppe Nord, Großvenedigergruppe Alpenhauptkamm, Glocknergruppe Nord, Glocknergruppe Alpenhauptkamm, Goldberggruppe Nord, Goldberggruppe Alpenhauptkamm, Niedere Tauern Alpenhauptkamm, Ankogelgruppe, Muhr, Niedere Tauern Süd, Nockberge



2000 m



near to and distant from ridges, mostly small



on steep grass-covered slopes

Pay close heed to fresh drifts

Avalanche danger above 2000 is moderate, below that altitude danger is low.

The fresh snowdrifts (from strong NW winds on Thursday, brisk southerly winds on Friday) can possible trigger and medium-sized slab, normally only with large additional loading (or in extremely steep terrain). The drifts are hard, only the icy patches can break. Acute danger of falling! Most danger zones (near to and distant from ridges) occur in extended N/E facing terrain at high altitude where there is lots of snow. Avoid zones below glide cracks.

Snowpack structure

The surface is highly varied, wind-compressed or icy or powder. Crests and ridges are completely windblown. Settled powder is found in some shady terrain where neither NW nor S winds have prevailed.

The old snowpack base is stable and thoroughly wet up to intermediate altitudes. On shady slopes there are faceted layers clinging to the crusts in the old snowpack, tests show them to be triggerable. The snowpack is so diverse that these layers are usually small.

The warm ground leads to the entire snowpack gliding downhill over smooth ground.

Weather

Heavy clouds will pass through, create diffuse light conditions, but the peaks will mostly remain in the clear. The S/W winds will be light to moderate. At 2000 m: -4 to +2 degrees.

Outlook

The snowfall on Saturday will blanket danger zones and can release on extremely steep slopes as a loose-snow avalanche. On Sunday, northerly winds will intensify and transport the fresh snow, esp. in Tauern and Lungau.

Translated by Jeffrey McCabe, www.creativtrans.com

Avalanche problems



Danger ratings



Expositions

