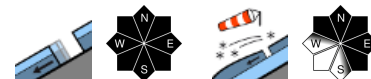


Circumvent freshly generated snowdrift accumulations



1800 m

Oberpinzgauer Grasberge, Kitzbüheler Alpen, Glemmtal, Dientner Grasberge, Pongauer Grasberge, Osterhorngruppe, Gamsfeldgruppe, Untersbergstock, Chiemgauer Alpen, Heutal, Reiteralpe, Niedere Tauern Nord, Niedere Tauern Alpenhauptkamm, Goldberggruppe Nord, Niedere Tauern Süd, Ankogelgruppe, Muhr



forestline

Großvenedigergruppe Nord, Großvenedigergruppe Alpenhauptkamm, Glocknergruppe Nord, Glocknergruppe Alpenhauptkamm, Goldberggruppe Alpenhauptkamm, Steinernes Meer, Hochkönig, Hagengebirge, Göllstock, Tennengebirge, Gosaukamm, Nockberge, Loferer und Leoganger Steinberge



Avalanche problems



Danger ratings

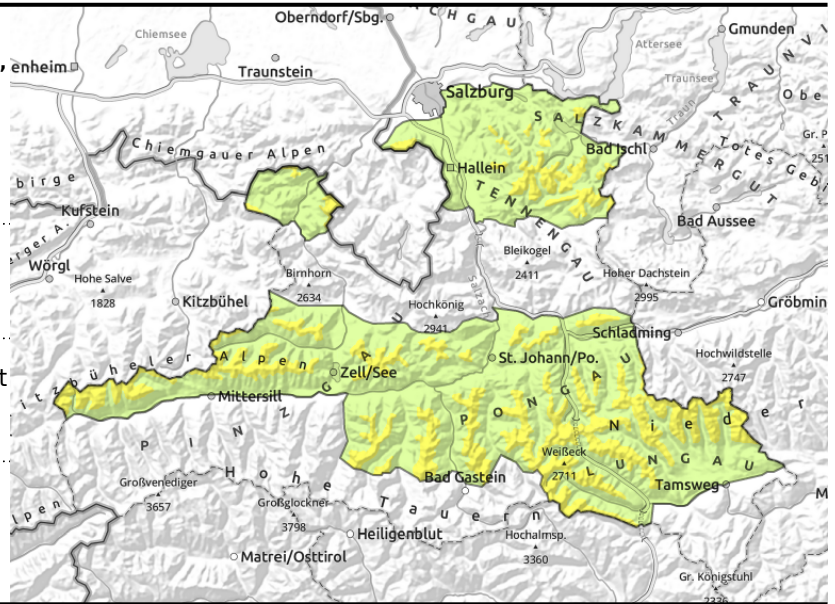


Expositions



valid for: **Thursday, 04.01.2024**

Oberpinzgauer Grasberge, Kitzbüheler Alpen, Glemmtal, Dientner Grasberge, Pongauer Grasberge, Osterhorngruppe, Gamsfeldgruppe, Untersbergstock, Chiemgauer Alpen, Heutal, Reiteralpe, Niedere Tauern Nord, Niedere Tauern Alpenhauptkamm, Goldberggruppe Nord, Niedere Tauern Süd, Ankogelgruppe, Muhr



steep grassy slopes, possible at any time of day (also size 2)

small, thin snowdrift masses

Avoid zones below glide cracks.

Avalanche danger is moderate above 1800 m, below that altitude danger is low.

Up to summit level glide-snow avalanches can trigger naturally at any time of day, esp. on steep slopes with smooth ground (grass, rocks) in all aspects. Avalanches mostly small.

On leeward slopes, small snowdrift accumulations are being freshly generated. Avalanches can be triggered even by 1 person on steep shady slopes. There are only few danger zones.

Snowpack structure

On Sunday night, the fresh snow settled somewhat amid rising temperatures (sink-in depths 10-15 cm) and the proneness to triggering has receded. Weak layers are evident inside the fresh fallen snow wherever snowdrifts lie deposited on top of fresh snow. In some places, surface hoar has been blanketed over.

The snowpack base is stable and thoroughly wet up to intermediate altitudes. The warm ground leads to the entire snowpack gliding downhill over smooth ground.

Weather

On Wednesday night minor showers in the Northern Alps, snowfall level at 1600-1200m.

During the daytime on Thursday, mostly dry, intermittent sunshine and better visibility. The W winds will be moderate to brisk (40 km/hr), strong-to-stormy in the Northern Alps. At 2000 m: -3 degrees; at 3000 m: -10 degrees.

Outlook

Avalanche danger levels are not expected to change significantly.

Avalanche problems



Danger ratings

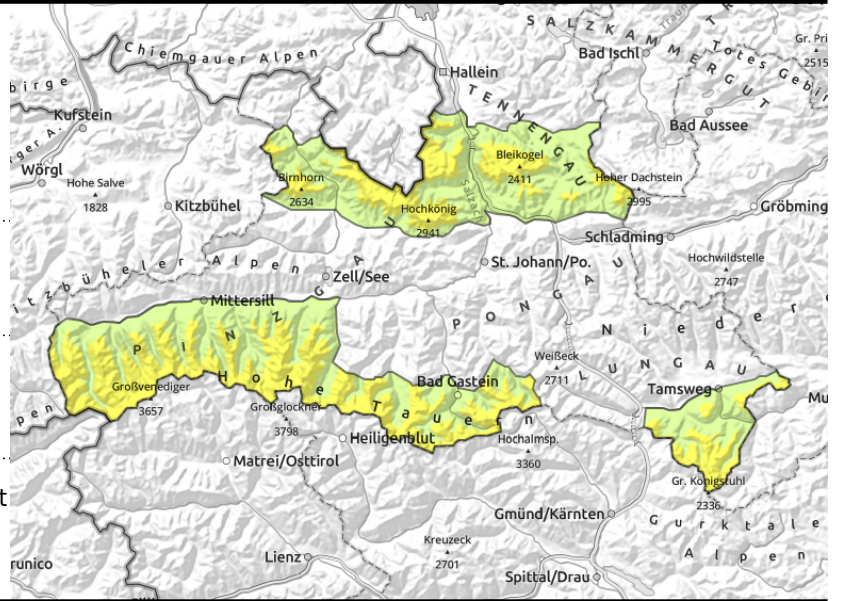


Expositions



valid for: **Thursday, 04.01.2024**

Großvenedigergruppe Nord, Großvenedigergruppe Alpenhauptkamm, Glocknergruppe Nord, Glocknergruppe Alpenhauptkamm, Goldberggruppe Alpenhauptkamm, Steinernes Meer, Hochkönig, Hagengebirge, Göllstock, Tennengebirge, Gosaukamm, Nockberge, Loferer und Leoganger Steinberge



forestline



small, thin snowdrift masses, also distant from ridges



steep grassy slopes, possible at any time of day (in Tauern also size 2)

Trigger-sensitive drifts due to stormy S/W winds

Avalanche danger above the treeline is moderate, below that altitude danger is low.

Fresh drifts can be triggered as small-to-medium slab avalanches by 1 person on NW/N/SE facing slopes. Danger zones occur in gullies, bowls and behind discontinuities, near to and distant from ridges. Frequency and size of danger zones increase swiftly with ascending altitude.

Up to 2800 m glide-snow avalanches can trigger naturally at any time of day on very steep slopes with smooth ground surfaces. Avoid zones below glide cracks.

Snowpack structure

On Sunday night, the fresh snow settled somewhat amid rising temperatures (sink-in depths 10-15 cm) and the proneness to triggering has receded. Weak layers are evident inside the fresh fallen snow wherever snowdrifts lie deposited on top of fresh snow. In some places, surface hoar has been blanketed over. Crusts and faceted layers lurk in the old snowpack on shady slopes, as tests confirm. The snowpack is highly irregular, making weak layers small.

The warm ground is making the entire snowpack glide downhill over smooth ground.

Weather

On Wednesday night minor showers in the Northern Alps, snowfall level at 1600-1200m.

During the daytime on Thursday, mostly dry, intermittent sunshine and better visibility. The W winds will be moderate to brisk (40 km/hr), strong-to-stormy in the Northern Alps. At 2000 m: -3 degrees; at 3000 m: -10 degrees.

Outlook

Avalanche danger levels are not expected to change significantly.

Translated by Jeffrey McCabe, www.creativtrans.com

Avalanche problems



Danger ratings



Expositions

