

Pay close heed to gliding snow and fresh drifts at high altitudes

	<p>1600 m</p>	<p>Oberpinzgauer Grasberge, Kitzbüheler Alpen, Glemmtal, Dientner Grasberge, Pongauer Grasberge, Osterhorngruppe, Gamsfeldgruppe, Untersbergstock, Chiemgauer Alpen, Heutal, Reiteralpe</p>	
	<p>1600 m</p>	<p>Nockberge</p>	
	<p>1600 m</p>	<p>Großvenedigergruppe Nord, Großvenedigergruppe Alpenhauptkamm, Glocknergruppe Nord, Glocknergruppe Alpenhauptkamm, Goldberggruppe Nord, Goldberggruppe Alpenhauptkamm, Niedere Tauern Nord, Niedere Tauern Alpenhauptkamm, Ankogelgruppe, Muhr, Niedere Tauern Süd, Steinernes Meer, Hochkönig, Hagengebirge, Göllstock, Loferer und Leoganger Steinberge, Tennengebirge, Gosaukamm</p>	

Avalanche problems



Danger ratings

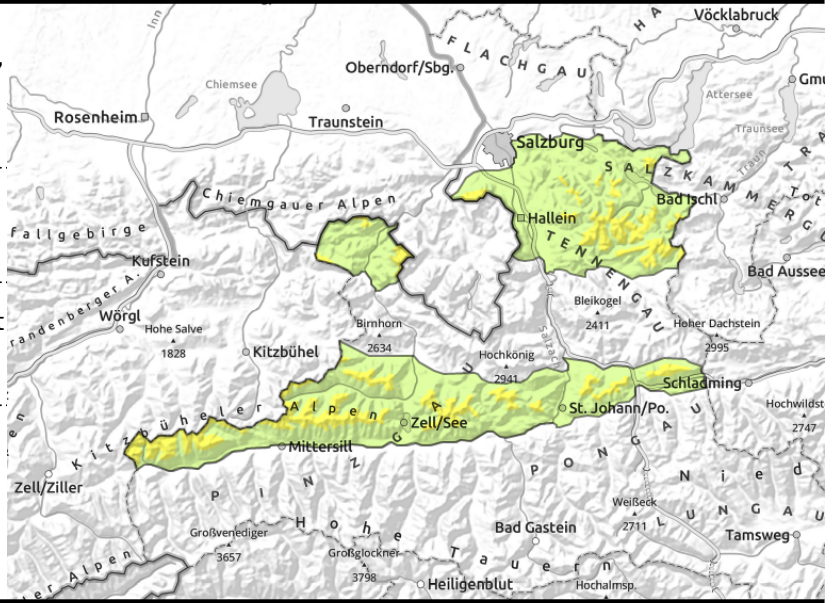


Expositions



valid for: **Tuesday, 02.01.2024**

Oberpinzgauer Grasberge, Kitzbüheler Alpen, Glemmtal, Dientner Grasberge, Pongauer Grasberge, Osterhorngruppe, Gamsfeldgruppe, Untersbergstock, Chiemgauer Alpen, Heutal, Reiteralpe



1600 m



steep grassy slopes, possible at any time of day



small, thin snowdrift masses

Avoid zones below glide cracks.

Avalanche danger is moderate above 1600 m, below that altitude danger is low.

Up to summit level glide-snow avalanches can trigger naturally at any time of day, esp. on steep slopes with smooth ground (grass, rocks) in all aspects. Avalanches mostly small.

On leeward slopes, small snowdrift accumulations are being freshly generated. Avalanches can be triggered even by 1 person on steep shady slopes. Danger zones increase with ascending altitude. Acute danger of falling.

Snowpack structure

On Sunday night, 15 cm of fresh snow was registered widespread. Weak layers are evident inside the fresh fallen snow wherever snowdrifts lie deposited on top of fresh snow. In some places, surface hoar has been blanketed over.

The old snowpack base is stable by and large, thoroughly wet up to intermediate altitudes. The warm ground is making the entire snowpack glide downhill over smooth surfaces.

Weather

High altitude clouds will move in during the night, only occasionally dispersing. On Tuesday, cloud cover widespread but the peaks mostly in the clear. Moderate SW winds. A bit of rainfall and above 1700 m snowfall is possible in the Prealps in the afternoon. Temperatures will rise. At 2000 m: -2 to +2 degrees, at 3000 m: -6 degrees.

Outlook

Avalanche danger levels are not expected to change significantly.

Avalanche problems



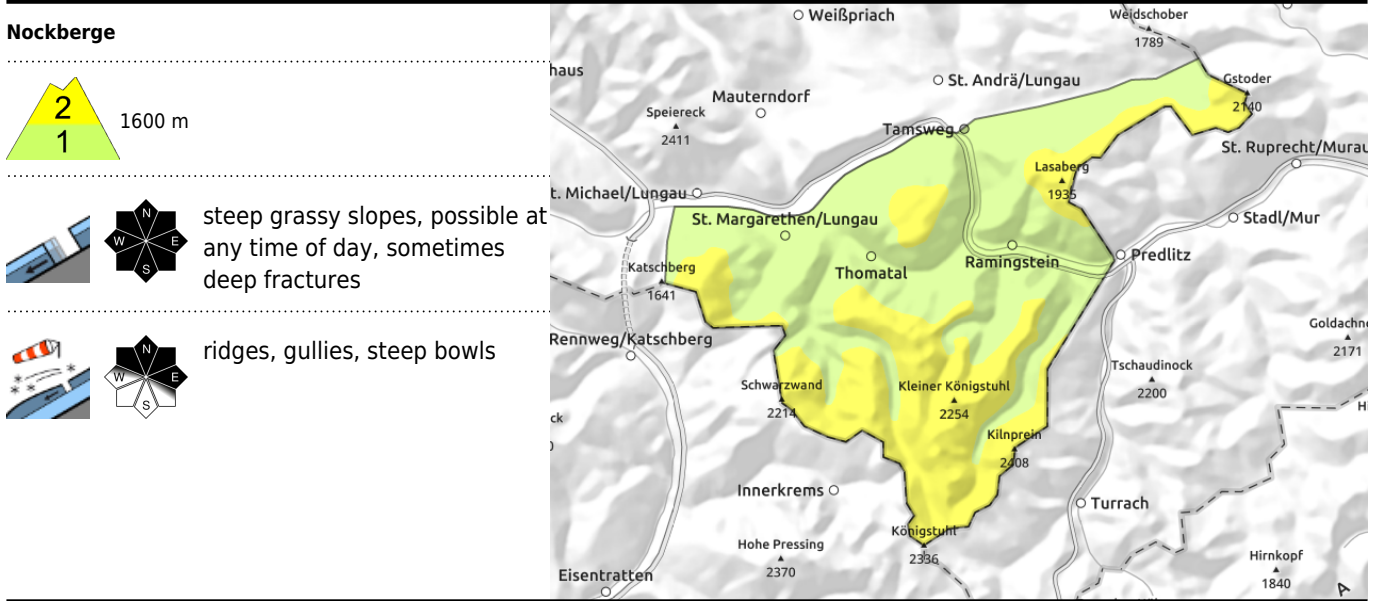
Danger ratings



Expositions



valid for: **Tuesday, 02.01.2024**



Avoid zones below glide cracks

Avalanche danger is moderate over 1600m, below that altitude danger is low.

Glide-snow avalanches can trigger naturally up to summit level at any time of day, esp on steep slopes with smooth ground beneath (grass, rocks) in all aspects. Above 1800 m they can be medium-sized. Avoid zones below glide cracks.

On leeward slopes, small snowdrift accumulations are being freshly generated. Avalanches can be triggered even by 1 person on steep shady slopes. Danger zones increase with ascending altitude.

Snowpack structure

On Sunday night, 15 cm of fresh snow was registered widespread. Weak layers are evident inside the fresh fallen snow wherever snowdrifts lie deposited on top of fresh snow. In some places, surface hoar has been blanketed over.

The old snowpack base is stable by and large, thoroughly wet up to intermediate altitudes. The warm ground is making the entire snowpack glide downhill over smooth surfaces.

Weather

High altitude clouds will move in during the night, only occasionally dispersing. On Tuesday, cloud cover widespread but the peaks mostly in the clear. Moderate SW winds. A bit of rainfall and above 1700 m snowfall is possible in the Prealps in the afternoon. Temperatures will rise. At 2000 m: -2 to +2 degrees, at 3000 m: -6 degrees.

Outlook

Avalanche danger levels are not expected to change significantly.

Avalanche problems



Danger ratings

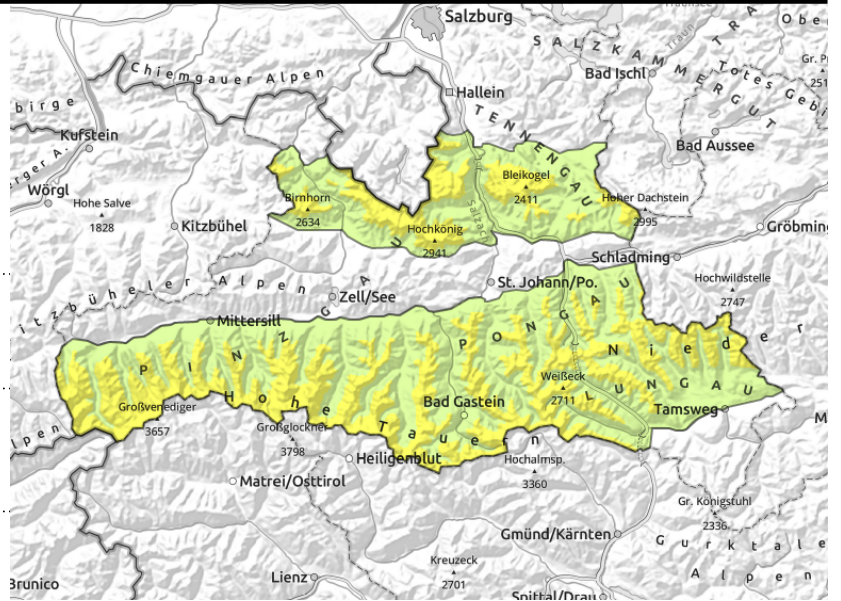


Expositions



valid for: **Tuesday, 02.01.2024**

Großvenedigergruppe Nord, Großvenedigergruppe Alpenhauptkamm, Glocknergruppe Nord, Glocknergruppe Alpenhauptkamm, Goldberggruppe Nord, Goldberggruppe Alpenhauptkamm, Niedere Tauern Nord, Niedere Tauern Alpenhauptkamm, Ankogelgruppe, Muhr, Niedere Tauern Süd, Steinernes Meer, Hochkönig, Hagengebirge, Göllstock, Loferer und Leoganger Steinberge, Tennengebirge, Gosaukamm



1600 m



in gullies, steep bowls



possible at any time of day, sometimes deep fractures, on steep grassy slopes

Assess fresh snowdrift accumulations carefully. Avoid zones below glide cracks.

Avalanche danger is moderate above 1600 m, below that altitude danger is low.

Glide-snow avalanches can trigger naturally up to 2600 m at any time of day, esp on steep slopes with smooth ground beneath (grass, rocks) in all aspects. They can be medium-sized. Avoid zones below glide cracks.

Above 2200 m fresh snowdrift accumulations are being generated, triggerable by 1 person on NW/E facing slopes, medium size releases possible. Danger zones occur in gullies, bowls and behind discontinuities in the terrain.

Weak layers in the old snow can trigger above 2800 m in a few places, usually by large additional loading (groups, cornice collapsing). Releases can be medium-sized. Danger zones increase with ascending altitude.

Snowpack structure

On Sunday night, 20 cm of fresh snow was registered widespread. Weak layers are evident inside the fresh fallen snow wherever snowdrifts lie deposited on top of fresh snow. In some places, surface hoar has been blanketed over.

On shady high altitude slopes there are faceted layers near the near-surface crusts, the snowpack is highly irregular, weak layers can thus be small.

The warm ground is making the entire snowpack glide downhill over smooth surfaces.

Weather

High altitude clouds will move in during the night, only occasionally dispersing. On Tuesday, cloud cover widespread but the peaks mostly in the clear. Moderate SW winds. A bit of rainfall and above 1700 m snowfall is possible in the Prealps in the afternoon. Temperatures will rise. At 2000 m: -2 to +2 degrees, at 3000 m: -6 degrees.

Outlook

Avalanche danger levels are not expected to change significantly.

Translated by Jeffrey McCabe, www.creativtrans.com

Avalanche problems



Danger ratings



Expositions

