

Pay close heed to gliding snow and fresh drifts at high altitudes

	<p>1600 m Oberpinzgauer Grasberge, Kitzbüheler Alpen, Glemmtal, Dientner Grasberge, Pongauer Grasberge, Osterhorngruppe, Gamsfeldgruppe, Untersbergstock, Chiemgauer Alpen, Heutal, Reiteralpe</p>	
	<p>1600 m Nockberge</p>	
	<p>1600 m Großvenedigergruppe Nord, Großvenedigergruppe Alpenhauptkamm, Glocknergruppe Nord, Glocknergruppe Alpenhauptkamm, Goldberggruppe Nord, Goldberggruppe Alpenhauptkamm, Niedere Tauern Nord, Niedere Tauern Alpenhauptkamm, Ankogelgruppe, Muhr, Niedere Tauern Süd, Steinernes Meer, Hochkönig, Hagengebirge, Göllstock, Loferer und Leoganger Steinberge, Tennengebirge, Gosaukamm</p>	

Avalanche problems



Danger ratings



Expositions

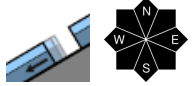


valid for: **Monday, 01.01.2024**

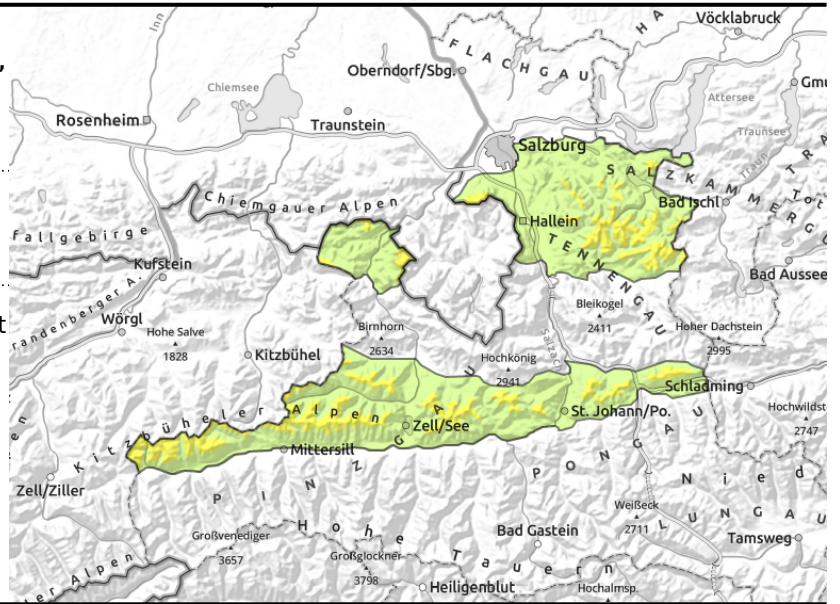
Oberpinzgauer Grasberge, Kitzbüheler Alpen, Glemmtal, Dientner Grasberge, Pongauer Grasberge, Osterhorngruppe, Gamsfeldgruppe, Untersbergstock, Chiemgauer Alpen, Heutal, Reiteralpe



1600 m



steep grassy slopes, possible at any time of day



Avoid zones below glide cracks

Avalanche danger is moderate above 1600 m, below that altitude danger is low.

Up to summit level glide-snow avalanches can trigger naturally at any time of day, esp. on steep slopes with smooth ground (grass, rocks) in all aspects. Avalanches mostly small.

On leeward slopes, small snowdrift accumulations are being freshly generated. Avalanches can be triggered even by 1 person on steep shady slopes. There are only few danger zones.

Snowpack structure

Weak layers can form inside the fresh snow masses, more often bonding with the old snowpack is adequate. During nights of clear skies surface hoar can form in wind-protected areas. When snowed over it forms a weak layer, the fresh snow on top of it is usually unbonded and, therefore, not a slab. The old snowpack base is generally stable, moist up to intermediate altitudes.

The ground is warm, thus, the entire snowpack is gliding downhill over smooth surfaces.

Weather

During the night persistent snowfall is expected, snowfall level dropping from 1000 down to 800 m. Near the Prealps and Grassy Mountains: 5 to 15 cm expected.

On Monday the clouds will disperse and sunshine with good visibility is anticipated. During the afternoon, cloudbanks will pass through. Westerly winds will reach 30-40 km/hr in exposed terrain. At 2000 m: -4 degrees.

Outlook

Avalanche danger levels are not expected to change significantly.

Avalanche problems



Danger ratings



Expositions

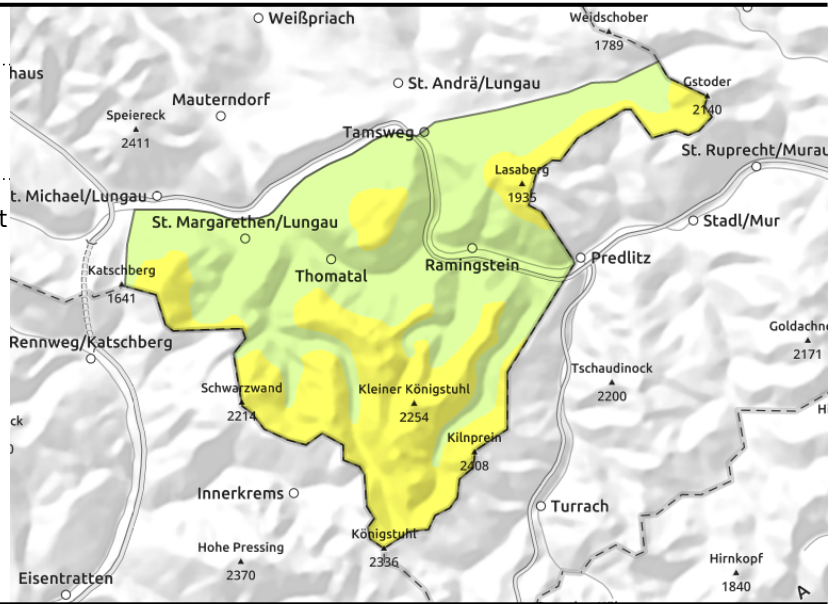


valid for: **Monday, 01.01.2024**

Nockberge



steep grassy slopes, possible at any time of day, sometimes deep fractures



Avoid zones below glide cracks

Avalanche danger is moderate over 1600m, below that altitude danger is low. Glide-snow avalanches can trigger naturally up to summit level at any time of day, esp on steep slopes with smooth ground beneath (grass, rocks) in all aspects. Above 1800 m they can be medium-sized. Avoid zones below glide cracks. On leeward slopes, small snowdrift accumulations are being freshly generated. Avalanches can be triggered even by 1 person on steep shady slopes. There are only few danger zones.

Snowpack structure

Weak layers can form inside the fresh snow masses, more often bonding with the old snowpack is adequate. During nights of clear skies surface hoar can form in wind-protected areas. When snowed over it forms a weak layer, the fresh snow on top of it is usually unbonded and, therefore, not a slab. The old snowpack base is generally stable, moist up to intermediate altitudes. The ground is warm, thus, the entire snowpack is gliding downhill over smooth surfaces.

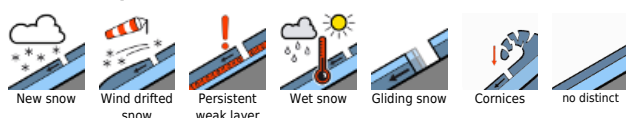
Weather

During the night persistent snowfall is expected, snowfall level dropping from 1000 down to 800 m. Near the Prealps and Grassy Mountains: 5 to 15 cm expected. On Monday the clouds will disperse and sunshine with good visibility is anticipated. During the afternoon, cloudbanks will pass through. Westerly winds will reach 30-40 km/hr in exposed terrain. At 2000 m: -4 degrees.

Outlook

Avalanche danger levels are not expected to change significantly.

Avalanche problems



Danger ratings

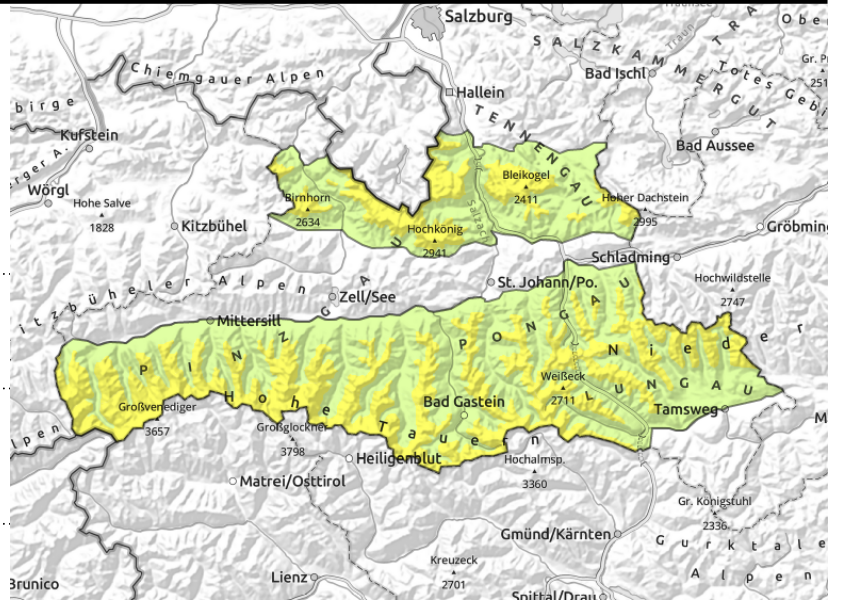


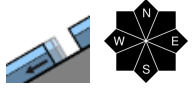
Expositions



valid for: **Monday, 01.01.2024**

Großvenedigergruppe Nord, Großvenedigergruppe Alpenhauptkamm, Glocknergruppe Nord, Glocknergruppe Alpenhauptkamm, Goldberggruppe Nord, Goldberggruppe Alpenhauptkamm, Niedere Tauern Nord, Niedere Tauern Alpenhauptkamm, Ankogelgruppe, Muhr, Niedere Tauern Süd, Steinernes Meer, Hochkönig, Hagengebirge, Göllstock, Loferer und Leoganger Steinberge, Tennengebirge, Gosaukamm



 possible at any time of day, sometimes deep fractures, on steep grassy slopes

 in gullies, steep bowls

Avoid zones below glide cracks. Assess snowdrift accumulations with caution.

Avalanche danger is moderate above 1600 m, below that altitude danger is low.

Glide-snow avalanches can trigger naturally up to 2600 m at any time of day, esp on steep slopes with smooth ground beneath (grass, rocks) in all aspects. They can be medium-sized. Avoid zones below glide cracks.

Above 2200 m fresh snowdrift accumulations are being generated, triggerable by 1 person on NW/E facing slopes, medium size releases possible. Danger zones occur in gullies, bowls and behind discontinuities in the terrain.

Weak layers in the old snow can trigger above 2800 m in a few places, usually by large additional loading (groups, cornice collapsing). Releases can be medium-sized. Danger zones increase with ascending altitude.

Snowpack structure

Weak layers can form inside the fresh snow masses, more often bonding with the old snowpack is adequate. During nights of clear skies surface hoar can form in wind-protected areas. When snowed over it forms a weak layer, the fresh snow on top of it is usually unbonded and, therefore, not a slab. The old snowpack base is generally stable, moist up to intermediate altitudes.

The ground is warm, thus, the entire snowpack is gliding downhill over smooth surfaces.

Weather

During the night persistent snowfall is expected, snowfall level dropping from 1000 down to 800 m. Near the Prealps and Grassy Mountains: 5 to 15 cm expected.

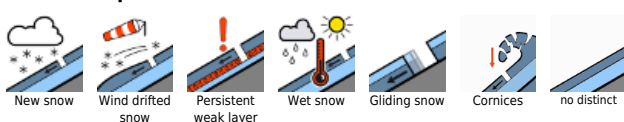
On Monday the clouds will disperse and sunshine with good visibility is anticipated. During the afternoon, cloudbanks will pass through. Westerly winds will reach 30-40 km/hr in exposed terrain. At 2000 m: -4 degrees, at 3000 m: -11 degrees.

Outlook

Avalanche danger levels are not expected to change significantly.

Translated by Jeffrey McCabe, www.creativtrans.com

Avalanche problems



Danger ratings



Expositions

