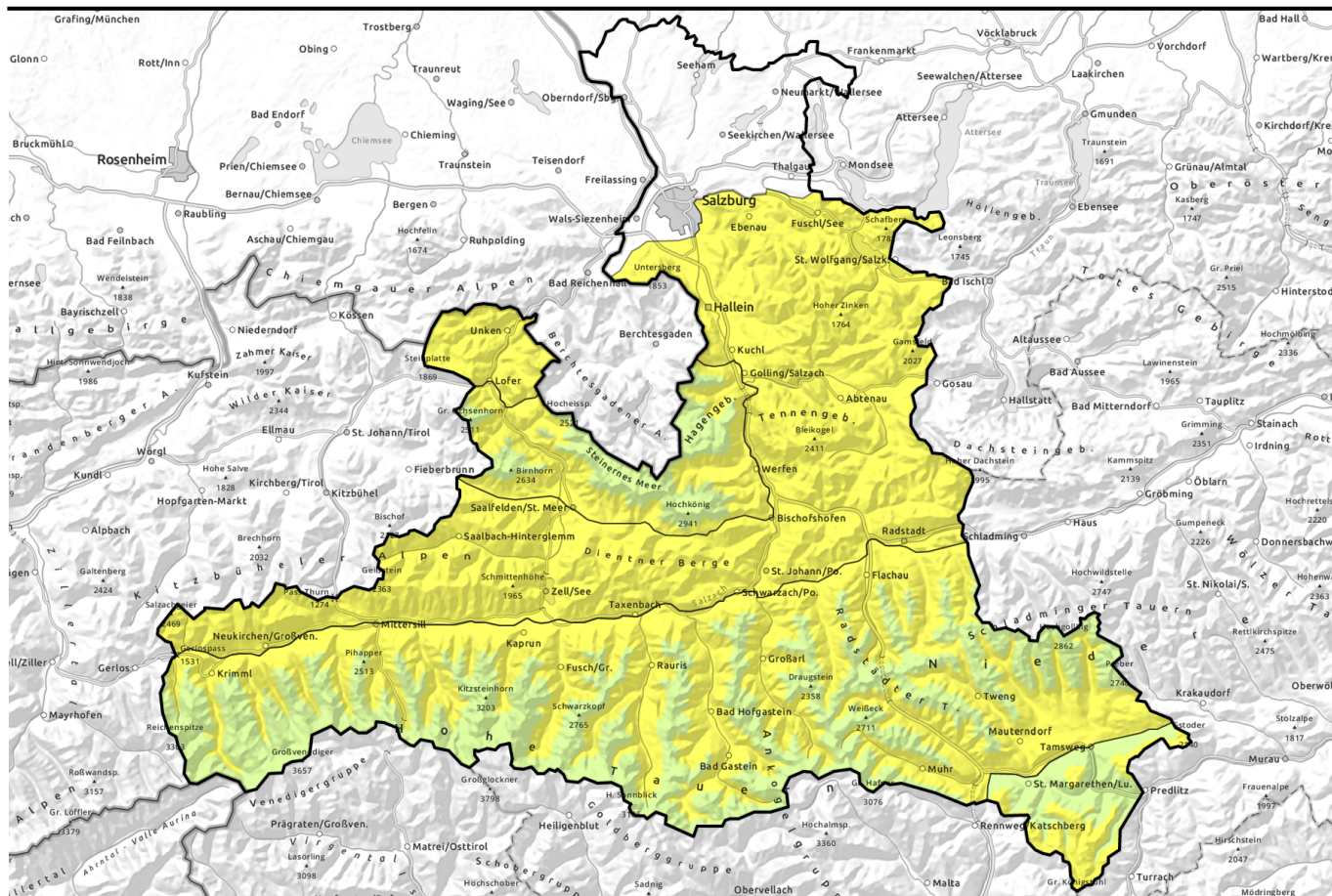


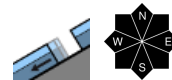
valid for: **Friday, 29.12.2023**



Main problem: gliding snow.

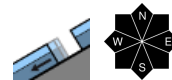


Oberpinzgauer Grasberge, Kitzbüheler Alpen, Glemmtal, Dientner Grasberge, Pongauer Grasberge, Tennengebirge, Gosaukamm, Osterhorngruppe, Gamsfeldgruppe, Untersbergstock, Chiemgauer Alpen, Heutal, Reiteralpe



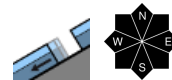
1500 m

Nockberge



2600 m

Großenedigergruppe Nord, Großenedigergruppe Alpenhauptkamm, Glocknergruppe Nord, Glocknergruppe Alpenhauptkamm, Goldberggruppe Nord, Goldberggruppe Alpenhauptkamm, Niedere Tauern Nord, Niedere Tauern Alpenhauptkamm, Ankogelgruppe, Muhr, Niedere Tauern Süd, Loferer und Leoganger Steinberge, Steinernes Meer, Hochkönig, Hagengebirge, Göllstock



Avalanche problems



Danger ratings

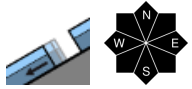


Expositions

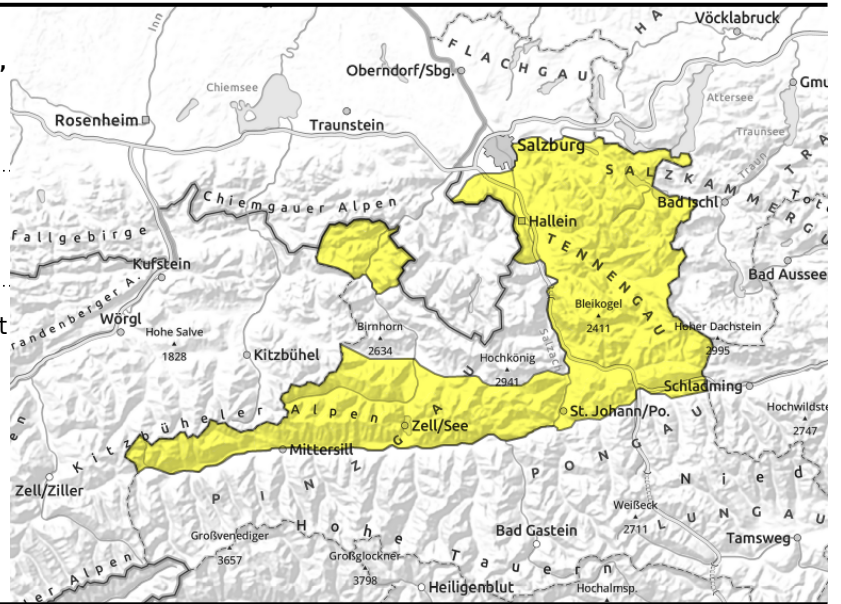


valid for: **Friday, 29.12.2023**

Oberpinzgauer Grasberge, Kitzbüheler Alpen, Glemmtal, Dientner Grasberge, Pongauer Grasberge, Tennengebirge, Gosaukamm, Osterhorngruppe, Gamsfeldgruppe, Untersbergstock, Chiemgauer Alpen, Heutal, Reiteralpe



steep grassy slopes, possible at any time of day



Avoid zones below glide cracks

Avalanche danger is moderate. Main problem: gliding snow.

Up to summit level glide-snow avalanches can trigger naturally at any time of day, esp. on steep slopes with smooth ground (grass, rocks) in all aspects. Avalanches can grow to medium size. Apart from the gliding snow problem, the danger of falling outweighs that of avalanches. Naturally triggered glide-snow avalanches are possible at any time of day, but skiers are unlikely to trigger them. Avoid zones below glide cracks.

Snowpack structure

Stormy winds have done their work on the high-alpine snowpack, variable surfaces should be expected during descents. Up to 2300 m the snowpack surface is riddled with water seepage channels, up to 2700 m there is a surface crust. Inside the snowdrifts from last weekend above 2700 m there are several icy films resulting from the fluctuating snowfall leels On high shady slopes there are faceted crystals beneath these films. The ground is warm, thus, the entire snowpack is gliding downhill over smooth surfaces.

Weather

On Friday, mostly cloudy skies, milky sunshine, heavier cloud cover north of Main Alpine Ridge, esp. in Prealps and Kalkalps. Good visibility, often diffuse light conditions. Light to moderate SW winds, stronger in the Prealps (50 km/hr). At 2000 m: +3 degrees. On Friday night, cloudy skies, getting heavy early Saturday morning.

Outlook

The danger of glide-snow avalanches will persist.

Avalanche problems



Danger ratings

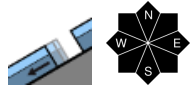


Expositions

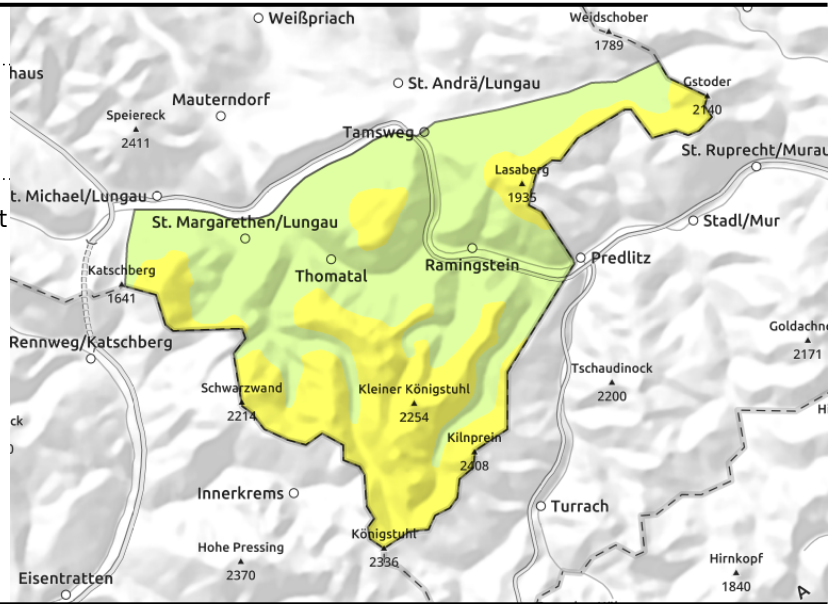


valid for: **Friday, 29.12.2023**

Nockberge



steep grassy slopes, possible at any time of day, sometimes deep fractures



Avoid zones below glide cracks

Avalanche danger is moderate over 1500 m, below that altitude danger is low. Main problem: gliding snow.

Glide-snow avalanches can trigger naturally up to summit level at any time of day, esp on steep slopes with smooth ground beneath (grass, rocks) in all aspects. Above 1800 m they can be medium-sized. Avoid zones below glide cracks.

Apart from the gliding snow problem, the danger of falling outweighs that of avalanches. Naturally triggered glide-snow avalanches are possible at any time of day, but skiers are unlikely to trigger them. Avoid zones below glide cracks.

Snowpack structure

Stormy winds have done their work on the snowpack, variable surfaces should be expected during descents. At low and intermediate altitudes the snowpack is thoroughly wet.

The drifts formed over the weekend are generally well bonded with the old snowpack.

The ground is warm, thus, the entire snowpack is gliding downhill over smooth surfaces.

Weather

On Friday, mostly cloudy skies, milky sunshine, heavier cloud cover north of Main Alpine Ridge, esp. in Prealps and Kalkalps. Good visibility, often diffuse light conditions. Light to moderate SW winds, stronger in the Prealps (50 km/hr). At 2000 m: +3 degrees. On Friday night, cloudy skies, getting heavy early Saturday morning.

Outlook

The danger of glide-snow avalanches will persist.

Avalanche problems



Danger ratings

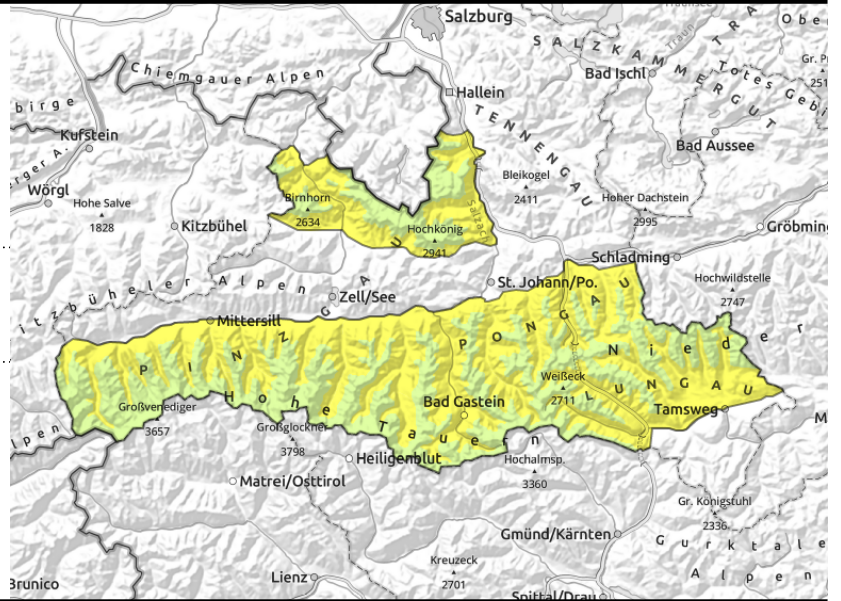


Expositions



valid for: **Friday, 29.12.2023**

Großvenedigergruppe Nord, Großvenedigergruppe Alpenhauptkamm, Glocknergruppe Nord, Glocknergruppe Alpenhauptkamm, Goldberggruppe Nord, Goldberggruppe Alpenhauptkamm, Niedere Tauern Nord, Niedere Tauern Alpenhauptkamm, Ankogelgruppe, Muhr, Niedere Tauern Süd, Loferer und Leoganger Steinberge, Steinernes Meer, Hochkönig, Hagengebirge, Göllstock



possible at any time of day, sometimes deep fractures, on steep grassy slopes

Avoid zones below glide cracks

Avalanche danger is moderate up to 2600 m. Main problem: gliding snow.

Glide-snow avalanches can trigger naturally up to 2600 m at any time of day, esp on steep slopes with smooth ground beneath (grass, rocks) in all aspects. They can be medium-sized. Avoid zones below glide cracks.

Above 2600 m the dangers of falling outweigh those of avalanches.

Weak layers in the old snow can trigger above 2800 m in a few places, usually by large additional loading (groups, cornice collapsing). Releases can be medium-sized. Danger zones increase with ascending altitude.

Snowpack structure

The snowpack at high altitudes shows harsh wind impact, snow is irregular. At low and intermediate altitudes the snowpack is moist/wet. Up to 2300 m there are rain seepage channels throughout the near-surface part. There are crusts up to 2700 m, also icy films near crusts.

The drifts formed over the weekend are generally well bonded with the old snowpack. Some faceted layers are evident, esp. >2800 m near the crusts in transitions.

On Thursday night the upper level will freeze, even at low altitudes, and form a crust capable of bearing loads. In the Northern Alps, outgoing radiation is reduced. The crusts can turn to firn snow during the day on Friday.

The ground is warm, thus, the entire snowpack is gliding downhill over smooth surfaces.

Weather

On Friday, mostly cloudy skies, milky sunshine, heavier cloud cover north of Main Alpine Ridge, esp. in Prealps and Kalkalps. Good visibility, often diffuse light conditions. Light to moderate SW winds, stronger in the Prealps (50 km/hr). At 2000 m: +3 degrees. On Friday night, cloudy skies, getting heavy early Saturday morning.

Outlook

The danger of glide-snow avalanches will persist.

Translated by Jeffrey McCabe, www.creativtrans.com

Avalanche problems



Danger ratings



Expositions

