

## Snowpack thoroughly wet to over 2000 m. Main problem: gliding snow.

	<p>2600 m</p>	
<p>Großenedigergruppe Nord, Großenedigergruppe Alpenhauptkamm, Glocknergruppe Nord, Glocknergruppe Alpenhauptkamm, Goldberggruppe Nord, Goldberggruppe Alpenhauptkamm, Niedere Tauern Nord, Niedere Tauern Alpenhauptkamm, Niedere Tauern Süd, Ankogelgruppe, Muhr, Loferer und Leoganger Steinberge, Steinernes Meer, Hochkönig, Hagengebirge, Gölstock</p>		
	<p>Nockberge</p>	
	<p>Dientner Grasberge, Pongauer Grasberge, Tennengebirge, Gosaukamm, Kitzbüheler Alpen, Glemmtal, Oberpinzgauer Grasberge</p>	
	<p>Chiemgauer Alpen, Heutal, Reiteralpe, Osterhorngruppe, Gamsfeldgruppe, Untersbergstock</p>	

### Avalanche problems



### Danger ratings

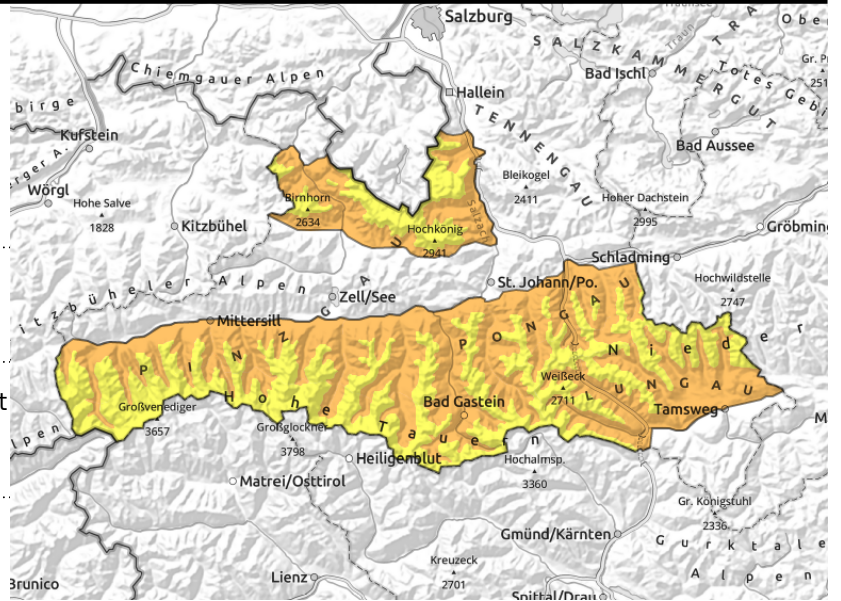


### Expositions



valid for: **Tuesday, 26.12.2023**

**Großvenedigergruppe Nord, Großvenedigergruppe Alpenhauptkamm, Glocknergruppe Nord, Glocknergruppe Alpenhauptkamm, Goldberggruppe Nord, Goldberggruppe Alpenhauptkamm, Niedere Tauern Nord, Niedere Tauern Alpenhauptkamm, Niedere Tauern Süd, Ankogelgruppe, Muhr, Loferer und Leoganger Steinberge, Steinernes Meer, Hochkönig, Hagengebirge, Göllstock**



steep grassy slopes, possible at any time of day, often deep fractures



danger zones increase with ascending altitude, exposed terrain is windblown

## Avoid zones below glide cracks

Avalanche danger is considerable.

Up to 2600 m glide-snow avalanches can trigger naturally at any time of day, esp. on steep slopes with smooth ground (grass, rocks) in all aspects. Avalanches can grow to medium size. Avoid zones below glide cracks.

Snowdrift accumulations can be triggered only in few places above 2600 m, esp. by large additional loading (a group, breaking cornice, glide-snow avalanche) and grow to large size.

Due to higher temperatures, loose-snow avalanches are possible, esp. on south-facing slopes, and can grow to medium size.

## Snowpack structure

Stormy winds have done their work on the snowpack, variable surfaces should be expected during descents. In many places the surfaces can bear loads. In general, the fresh snow from the weekend has settled well.

Wide-ranging snowdrift accumulations have been generated at high altitudes, on shady slopes deposited atop a loose layer of faceted crystals. Even where the snowpack surface was encrusted, a faceted layer could have formed before the snow fell. In high alpine zones above 2500 m the old snowpack base has faceted crystals near the crusts.

The ground is warm, thus, the entire snowpack is gliding downhill over smooth surfaces.

## Weather

On Tuesday, lots of clouds, the sunshine will be milky, compact clouds in the Tauern but the peaks should remain in the clear. Visibility mostly good. Westerly winds will slacken off (50 km/hr). At 2000 m: 3-6 degrees; at 3000 m: -2 degrees. On Tuesday night, clear skies or only scattered clouds.

## Outlook

The danger of glide-snow avalanches will persist. Snowdrift problem will recede.

### Avalanche problems



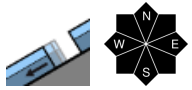
### Danger ratings



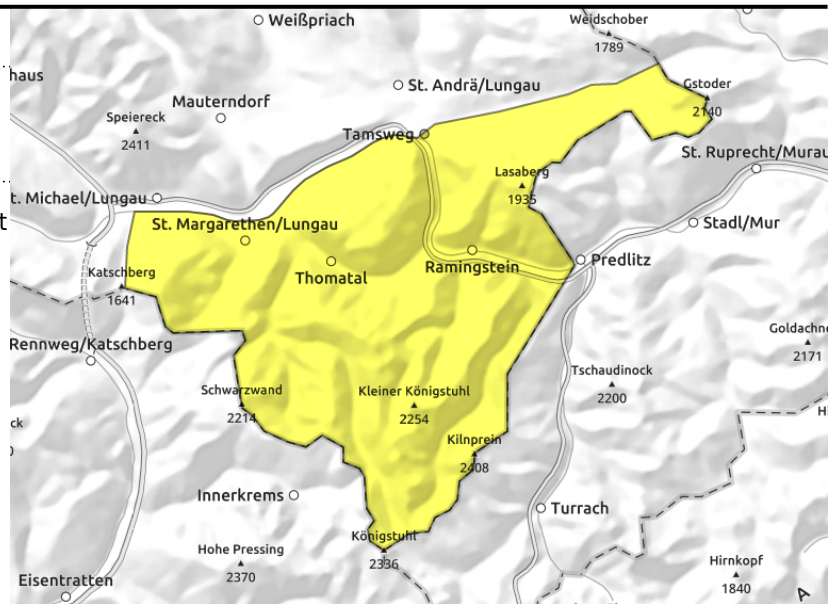
### Expositions



**Nockberge**



steep grassy slopes, possible at any time of day



**Avoid zones below glide cracks**

Glide-snow avalanches can trigger naturally up to summit level at any time of day, esp on steep slopes with smooth ground beneath (grass, rocks) in all aspects. Above 1800 m they can be medium-sized. Avoid zones below glide cracks.

Fresh snowdrifts from the last 24 hours can trigger by large additional loading (a group, breaking cornice, glide-snow avalanche), esp. above 2200 m behind protruberances, in steep gullies and bowls, mostly small, in isolated cases medium-sized.

Due to higher temperatures, loose-snow avalanches are possible on very steep slopes, mostly small-sized.

**Snowpack structure**

Stormy winds have done their work on the snowpack, variable surfaces should be expected during descents. In many places the surfaces can bear loads. In general, the fresh snow from the weekend has settled well.

Wide-ranging snowdrift accumulations have been generated at high altitudes, on shady slopes deposited atop a loose layer of faceted crystals. Even where the snowpack surface was encrusted, a faceted layer could have formed before the snow fell. In high alpine zones above 2500 m the old snowpack base has faceted crystals near the crusts.

The ground is warm, thus, the entire snowpack is gliding downhill over smooth surfaces.

**Weather**

On Tuesday, lots of clouds, the sunshine will be milky, compact clouds but the peaks should remain in the clear. Visibility mostly good. Westerly winds will slacken off (50 km/hr). Westerly winds will slacken off (50 km/hr). At 2000 m: 3-6 degrees; at 3000 m: -2 degrees. On Tuesday night, clear skies or only scattered clouds.

**Outlook**

The danger of glide-snow avalanches will persist.

**Avalanche problems**



**Danger ratings**

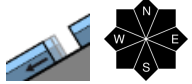


**Expositions**

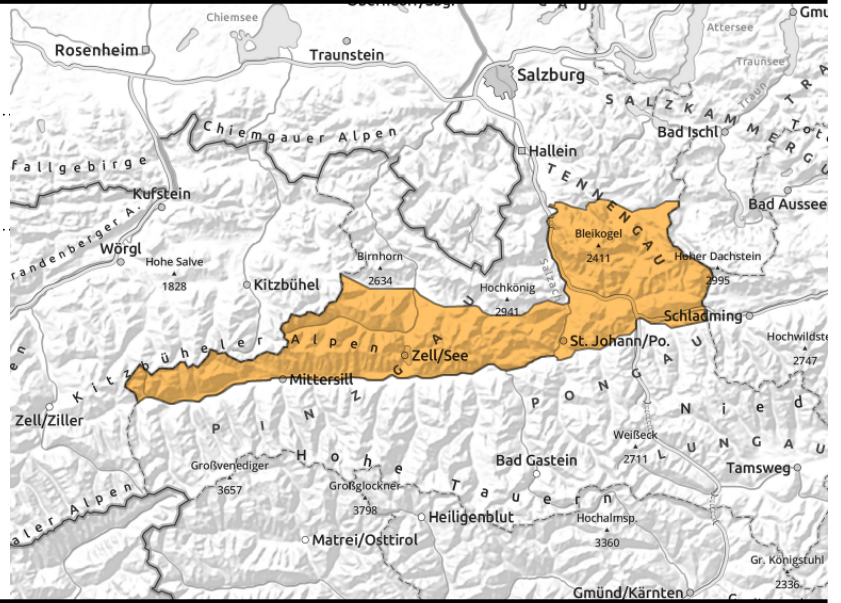


valid for: **Tuesday, 26.12.2023**

**Dientner Grasberge, Pongauer Grasberge, Tennengebirge, Gosaukamm, Kitzbüheler Alpen, Glemmtal, Oberpinzgauer Grasberge**



possible at any time of day, sometimes deep fractures, on steep grassy slopes



### Avoid zones below glide cracks

Avalanche danger is considerable.

Glide-snow avalanches can trigger naturally up to summit level at any time of day, esp on steep slopes with smooth ground beneath (grass, rocks) in all aspects. Above 1800 m they can be medium-sized. Avoid zones below glide cracks.

Fresh snowdrifts from the last 24 hours can trigger by large additional loading (a group, breaking cornice, glide-snow avalanche), esp. above 2200 m behind protruberances, in steep gullies and bowls, mostly small, in isolated cases medium-sized.

Due to higher temperatures, loose-snow avalanches are possible on very steep slopes, mostly small-sized.

### Snowpack structure

Stormy winds have done their work on the snowpack, variable surfaces should be expected during descents. In many places the surfaces can bear loads. In general, the fresh snow from the weekend has settled well.

Wide-ranging snowdrift accumulations have been generated at high altitudes, on shady slopes deposited atop a loose layer of faceted crystals. Even where the snowpack surface was encrusted, a faceted layer could have formed before the snow fell. In high alpine zones above 2500 m the old snowpack base has faceted crystals near the crusts.

The ground is warm, thus, the entire snowpack is gliding downhill over smooth surfaces.

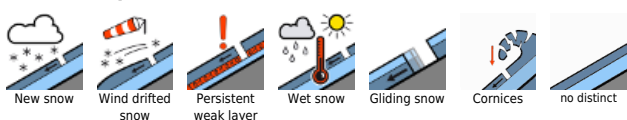
### Weather

On Tuesday, lots of clouds, the sunshine will be milky, compact clouds but the peaks should remain in the clear. Visibility mostly good. Westerly winds will slacken off (50 km/hr). At 2000 m: 3-6 degrees; at 3000 m: -2 degrees. On Tuesday night, clear skies or only scattered clouds.

### Outlook

The danger of glide-snow avalanches will persist.

#### Avalanche problems



#### Danger ratings



#### Expositions

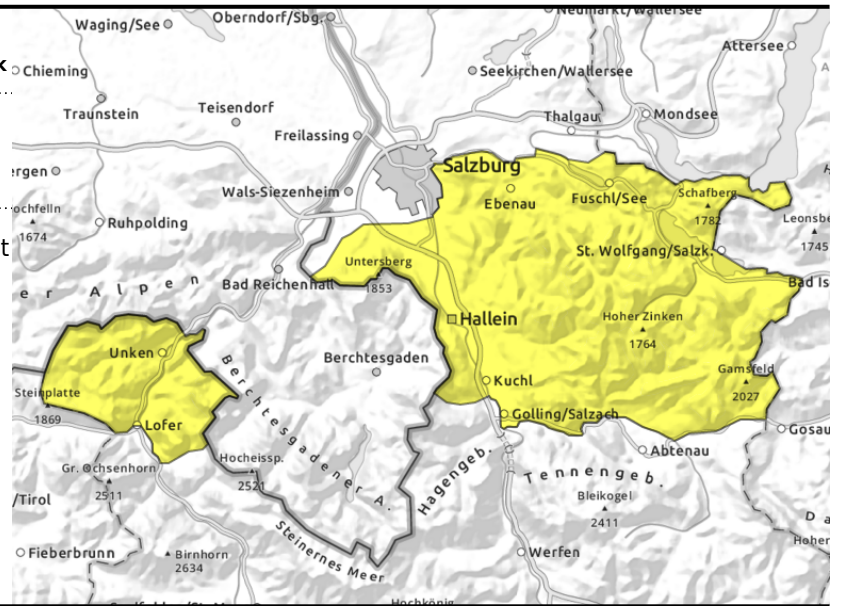


valid for: **Tuesday, 26.12.2023**

**Chiemgauer Alpen, Heutal, Reiteralpe, Osterhorngruppe, Gamsfeldgruppe, Untersbergstock**



steep grassy slopes, possible at any time of day



## Avoid zones below glide cracks

U

Up to 2600 m glide-snow avalanches can trigger naturally at any time of day, esp. on steep slopes with smooth ground (grass, rocks) in all aspects. Avalanches can grow to medium size. Avoid zones below glide cracks.

Due to higher temperatures, loose-snow avalanches are possible, esp. on south-facing slopes, mostly small-sized.

### Snowpack structure

Stormy winds have done their work on the snowpack, variable surfaces should be expected during descents. In many places the surfaces can bear loads. In general, the fresh snow from the weekend has settled well.

The ground is warm, thus, the entire snowpack is gliding downhill over smooth surfaces.

### Weather

On Tuesday, lots of clouds, the sunshine will be milky, compact clouds in the Tauern but the peaks should remain in the clear. Visibility mostly good. Westerly winds will slacken off (50 km/hr). At 2000 m: 3-6 degrees; at 3000 m: -2 degrees. On Tuesday night, clear skies or only scattered clouds.

### Outlook

The danger of glide-snow avalanches will persist. Snowdrift problem will recede.

Translated by Jeffrey McCabe, [www.creativtrans.com](http://www.creativtrans.com)

#### Avalanche problems



#### Danger ratings



#### Expositions

