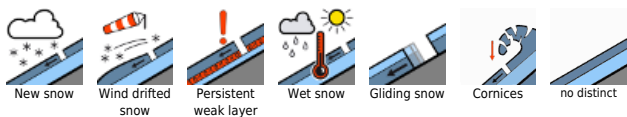


Snowpack is warming and settling. Avoid zones below glide cracks and fresh snowdrifts.

	<p>Großenedigergruppe Nord, Großenedigergruppe Alpenhauptkamm, Glocknergruppe Nord, Glocknergruppe Alpenhauptkamm, Goldberggruppe Nord, Goldberggruppe Alpenhauptkamm, Niedere Tauern Nord, Niedere Tauern Alpenhauptkamm, Niedere Tauern Süd, Ankogelgruppe, Muhr, Loferer und Leoganger Steinberge, Steinernes Meer, Hochkönig, Hagengebirge, Gölstock</p>	
	<p>Nockberge</p>	
	<p>Chiemgauer Alpen, Heutal, Reiteralpe, Dientner Grasberge, Pongauer Grasberge, Tennengebirge, Gosaukamm, Osterhorngruppe, Gamsfeldgruppe, Untersbergstock, Kitzbüheler Alpen, Glemmtal, Oberpinzgauer Grasberge</p>	

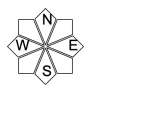
Avalanche problems



Danger ratings

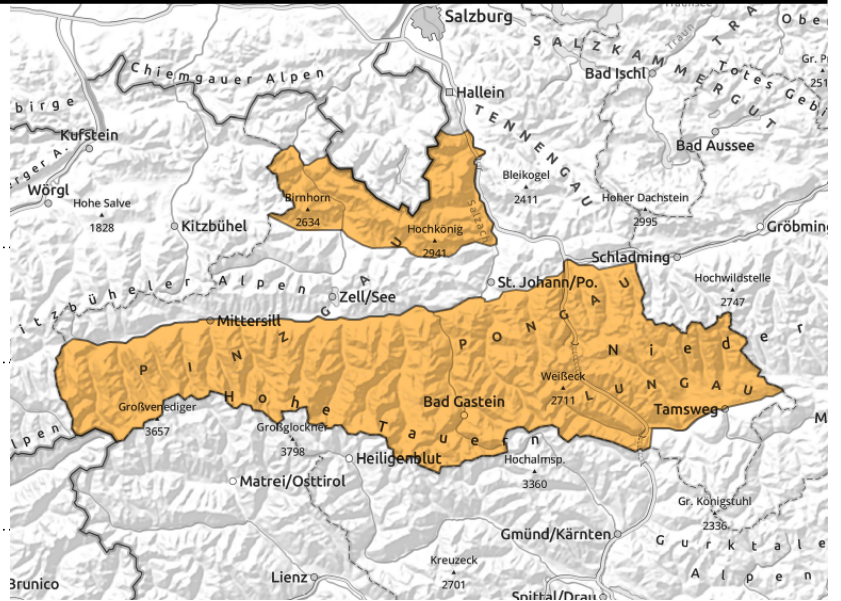


Expositions



valid for: **Monday, 25.12.2023**

Großvenedigergruppe Nord, Großvenedigergruppe Alpenhauptkamm, Glocknergruppe Nord, Glocknergruppe Alpenhauptkamm, Goldberggruppe Nord, Goldberggruppe Alpenhauptkamm, Niedere Tauern Nord, Niedere Tauern Alpenhauptkamm, Niedere Tauern Süd, Ankogelgruppe, Muhr, Loferer und Leoganger Steinberge, Steinernes Meer, Hochkönig, Hagengebirge, Göllstock



behind protruberances, in gullies, steep bowls, danger zones increase with ascending altitude



possible at any time of day, sometimes deep fractures, on steep grassy slopes

Avoid fresh snowdrift accumulations and zones below glide cracks

Avalanche danger is considerable.

Above 2200 m small fresh snowdrift accumulations from the last 24 hours can be triggered by 1 person, esp. on NW/N/E facing slopes behind protruberances, in steep gullies and bowls, and grow to medium size. Danger zones increase with ascending altitude.

The older snowdrift accumulations which were generated during the snowfall are mostly triggerable only by large additional loading (group of persons, breaking cornice) and can grow to large size. Over the last few days, large cornices have formed. Due to higher temperatures the risk of their breaking is heightened. Avoid zones below cornices.

Up to 2500 m, glide-snow avalanches can trigger naturally at any time of day, esp. on steep smooth slopes (grass-covered, rocks) in all aspects, medium-sized at 1400-2500 m.

Furthermore, due to rain impact wet loose-snow avalanches are possible in extremely steep terrain, mostly small sized.

Snowpack structure

Stormy winds have done their work on the snowpack, variable surfaces should be expected during descents. In many places the surfaces can bear loads. In general, the fresh snow from the weekend has settled well.

Wide-ranging snowdrift accumulations have been generated at high altitudes, on shady slopes deposited atop a loose layer of faceted crystals. Even where the snowpack surface was encrusted, a faceted layer could have formed before the snow fell. In high alpine zones above 2500 m the old snowpack base has faceted crystals near the crusts.

The warm ground enables the entire snowpack to glide downhill when the ground is smooth. The weight-load of fresh snow and wind reinforces this process.

The snowpack surface is moist up to 2000 m, thoroughly wet at lower altitudes.

Weather

On Monday, quite sunny weather right from the start with good visibility. High cloudbanks will be no disturbance. It will remain dry. The W/NW winds will continue to be stormy (up to 90 km/hr). Very

Avalanche problems



Danger ratings



Expositions



valid for: **Monday, 25.12.2023**

mild. At 2000 m: +5 to +6 degrees; at 3000 m: -1 degree.

Outlook

Danger of glide-snow avalanches persists. The snowdrift problem is diminishing.

Avalanche problems



Danger ratings



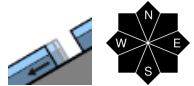
Expositions

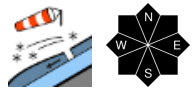


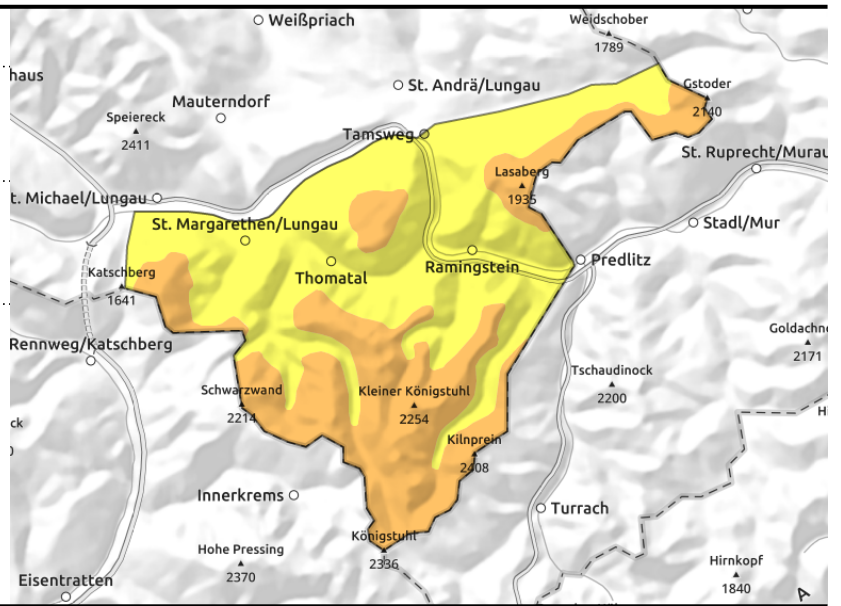
valid for: **Monday, 25.12.2023**

Nockberge



 possible at any time of day, on steep grassy slopes

 behind protruberances, in gullies, steep bowls



Avoid fresh snowdrift accumulations and zones below glide cracks

Avalanche danger is considerable above 1600 m.

Glide-snow avalanches can trigger naturally up to summit level at any time of day, esp on steep slopes with smooth ground beneath (grass, rocks) in all aspects. Above 1600 m they can be medium-sized. Avoid zones below glide cracks.

Fresh snowdrifts from the last 24 hours can trigger even from 1 person, esp. on NW/N/E facing slopes above 2000 m behind protruberances, in steep gullies and bowls, mostly small, in isolated cases medium-sized.

Due to higher temperatures, loose-snow avalanches are possible on very steep slopes, mostly small-sized.

Snowpack structure

Stormy winds have done their work on the snowpack, variable surfaces should be expected during descents. In many places the surfaces can bear loads. In general, the fresh snow from the weekend has settled well.

Wide-ranging snowdrift accumulations have been generated at high altitudes, on shady slopes deposited atop a loose layer of faceted crystals. Even where the snowpack surface was encrusted, a faceted layer could have formed before the snow fell.

The warm ground enables the entire snowpack to glide downhill when the ground is smooth. The weight-load of fresh snow and wind reinforces this process.

The snowpack surface is moist up to 2000 m, thoroughly wet at lower altitudes.

Weather

On Monday, quite sunny weather right from the start with good visibility. High cloudbanks will be no disturbance. It will remain dry. The W/NW winds will continue to be stormy (up to 90 km/hr). Very mild. At 2000 m: +5 to +6 degrees.

Outlook

Danger of glide-snow avalanches persists. The snowdrift problem is diminishing.

Avalanche problems



Danger ratings

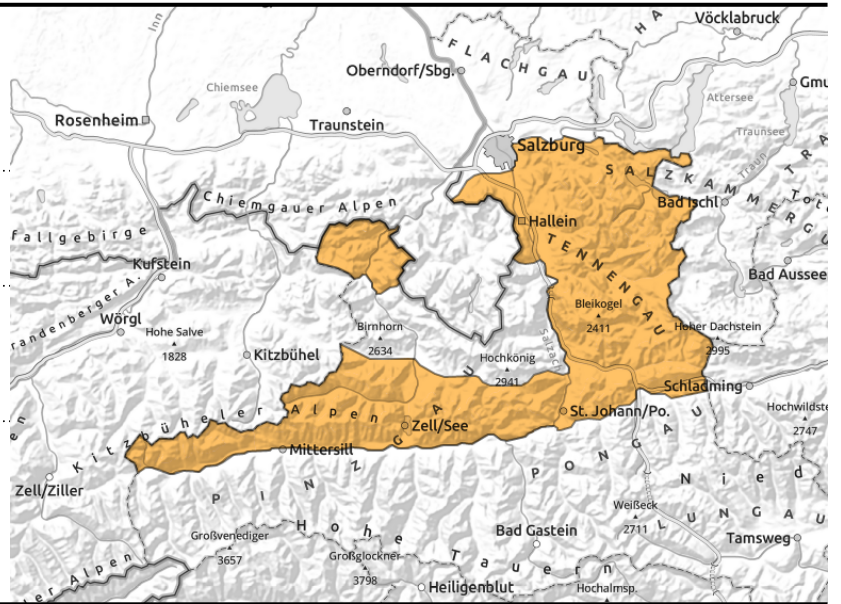


Expositions



valid for: **Monday, 25.12.2023**

Chiemgauer Alpen, Heutal, Reiteralpe, Dientner Grasberge, Pongauer Grasberge, Tennengebirge, Gosaukamm, Osterhorngruppe, Gamsfeldgruppe, Untersbergstock, Kitzbüheler Alpen, Glemmtal, Oberpinzgauer Grasberge



possible at any time of day, sometimes deep fractures, on steep grassy slopes



behind protruberances, in gullies, steep bowls, danger zones increase with ascending altitude

Avoid fresh snowdrift accumulations and zones below glide cracks

Stormy winds have done their work on the snowpack, variable surfaces should be expected during descents. In many places the surfaces can bear loads. In general, the fresh snow from the weekend has settled well.

Wide-ranging snowdrift accumulations have been generated at high altitudes, on shady slopes deposited atop a loose layer of faceted crystals. Even where the snowpack surface was encrusted, a faceted layer could have formed before the snow fell.

The warm ground enables the entire snowpack to glide downhill when the ground is smooth. The weight-load of fresh snow and wind reinforces this process.

The snowpack surface is moist up to 2000 m, thoroughly wet at lower altitudes.

Snowpack structure

Stormy winds have done their work on the snowpack, variable surfaces should be expected during descents. In many places the surfaces can bear loads. In general, the fresh snow from the weekend has settled well.

Wide-ranging snowdrift accumulations have been generated at high altitudes, on shady slopes deposited atop a loose layer of faceted crystals. Even where the snowpack surface was encrusted, a faceted layer could have formed before the snow fell.

The warm ground enables the entire snowpack to glide downhill when the ground is smooth. The weight-load of fresh snow and wind reinforces this process.

The snowpack surface is moist up to 2000 m, thoroughly wet at lower altitudes.

Weather

On Monday, quite sunny weather right from the start with good visibility. High cloudbanks will be no disturbance. It will remain dry. The W/NW winds will continue to be stormy (up to 90 km/hr). Very mild. At 2000 m: +5 to +6 degrees.

Outlook

Danger of glide-snow avalanches persists. The snowdrift problem is diminishing.

Translated by Jeffrey McCabe, www.creativtrans.com

Avalanche problems



Danger ratings



Expositions

