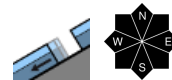


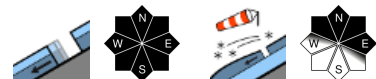
Gliding snow at high altitudes. Beware snowdrifts.



Osterhorngruppe, Gamsfeldgruppe, Untersbergstock, Chiemgauer Alpen, Heutal, Reiteralpe, Oberpinzgauer Grasberge, Kitzbüheler Alpen, Glemmtal, Dientner Grasberge, Pongauer Grasberge, Niedere Tauern Süd



Loferer und Leoganger Steinberge, Steinernes Meer, Hochkönig, Hagengebirge, Göllstock, Tennengebirge, Gosaukamm, Großvenedigergruppe Nord, Glocknergruppe Nord, Großvenedigergruppe Alpenhauptkamm, Glocknergruppe Alpenhauptkamm, Goldberggruppe Alpenhauptkamm, Ankogelgruppe, Muhr, Niedere Tauern Alpenhauptkamm, Niedere Tauern Nord, Goldberggruppe Nord



forestline Nockberge



Avalanche problems



Danger ratings

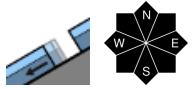
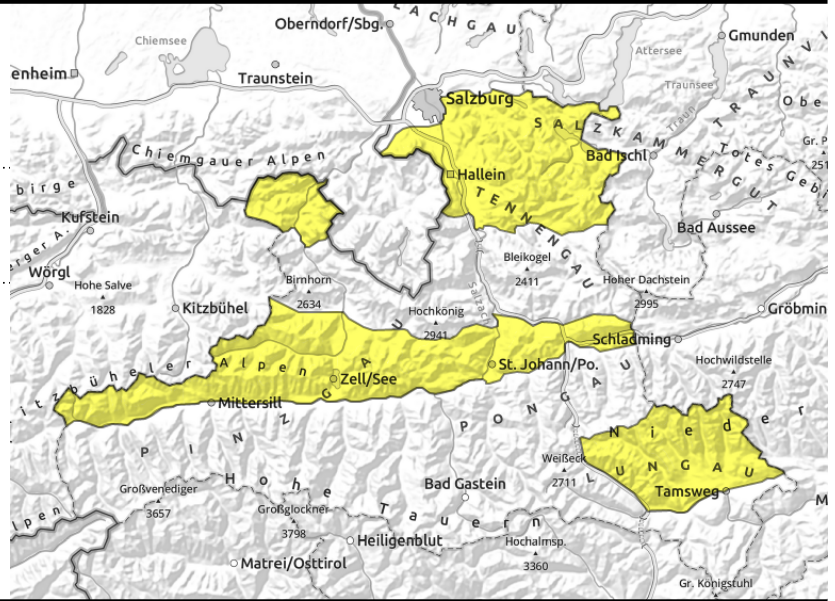


Expositions



valid for: **Thursday, 21.12.2023**

Osterhorngruppe, Gamsfeldgruppe, Untersbergstock, Chiemgauer Alpen, Heutal, Reiteralpe, Oberpinzgauer Grasberge, Kitzbüheler Alpen, Glemmtal, Dientner Grasberge, Pongauer Grasberge, Niedere Tauern Süd



possible at any time of day

Avoid zones below glide cracks

Avalanche danger is moderate.

Main problem: still glide-snow avalanches, which can release at any time of day in steep terrain where the ground is smooth (grass, rocks). Avalanches generally remain small-to-medium sized.

A few cm of fresh snow and brisk W/SW winds: fresh snowdrifts being generated, can be triggered even by minimum additional loading. Danger zones are near ridgelines in wind-protected terrain, increase with ascending altitude. Hard to recognize due to poor visibility.

Snowpack structure

Fresh snowdrift accumulations were deposited atop the minor amount of fresh fallen snow from yesterday. Weak layers lurk inside the fresh snow.

Elsewhere the snowpack is well consolidated, often with a melt-freeze crust. Due to the warm ground the entire snowpack can glide downhill.

Weather

On Thursday, heavy cloud cover from the start, light minor snowfall will later be possible north of the Salzach, snowfall level at 1000 to 1200 m. In the Tauern it will remain dry. Visibility often reduced due to clouds, in the north due to showers. Later on from the northwest, precipitation, intensifying in the evening, extending also to southern mountain ranges. Snowfall level will fluctuate around 1200 m. Westerly winds will be brisk (50 km/hr), intensify to storm strength by evening (100 km/hr). At 2000 m: -4 degrees.

Outlook

On Friday and Saturday, northerly storm-strength winds, heavy snowfall. Marked rise in avalanche danger.

Avalanche problems



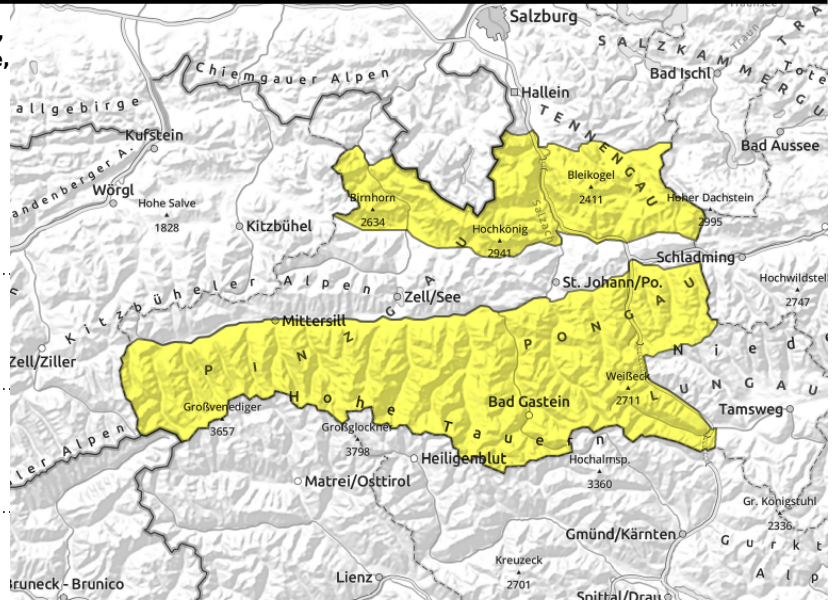
Danger ratings



Expositions



Loferer und Leoganger Steinberge, Steinernes Meer, Hochkönig, Hagengebirge, Göllstock, Tennengebirge, Gosaukamm, Großvenedigergruppe Nord, Glocknergruppe Nord, Großvenedigergruppe Alpenhauptkamm, Glocknergruppe Alpenhauptkamm, Goldberggruppe Alpenhauptkamm, Ankogelgruppe, Muhr, Niedere Tauern Alpenhauptkamm, Niedere Tauern Nord, Goldberggruppe Nord



possible at any time of day



near ridges, in gullies and bowls

Beware gliding snow and snowdrifts

Avalanche danger is moderate.

Main problem: still glide-snow avalanches, which can release at any time of day in steep terrain where the ground is smooth (grass, rocks). Avalanches generally remain small-to-medium sized, most glide-snow avalanches at 1600-2300 m, possibly slightly higher.

A few cm of fresh snow and brisk W/NW winds: fresh snowdrifts being generated, can be triggered by 1 person, but the risks of taking a fall outweigh those of being buried in snow masses. Most danger zones are at high and high-alpine altitudes, in shady gullies and bowls. Danger zones increase with ascending altitude, are difficult to recognize.

Snowpack structure

On shady slopes the snowpack is often still loose, on sunny slopes the bit of fresh snow lies on a melt-freeze crust.

Fresh drifts are often deposited on a loose surface, where inside the snowpack weak layers can be triggered.

Elsewhere the snowpack is well consolidated. The ground is warm, so the snowpack can glide downhill.

Weather

On Thursday, heavy cloud cover from the start, light minor snowfall will later be possible north of the Salzach, snowfall level at 1000 to 1200 m. In the Tauern it will remain dry. Visibility often reduced due to clouds, in the north due to showers. Later on from the northwest, precipitation, intensifying in the evening, extending also to southern mountain ranges. Snowfall level will fluctuate around 1200 m. Westerly winds will be brisk (50 km/hr), intensify to storm strength by evening (100 km/hr). At 2000 m: -4 degrees.

Outlook

On Friday and Saturday, northerly storm-strength winds, heavy snowfall. Marked rise in avalanche danger.

Avalanche problems



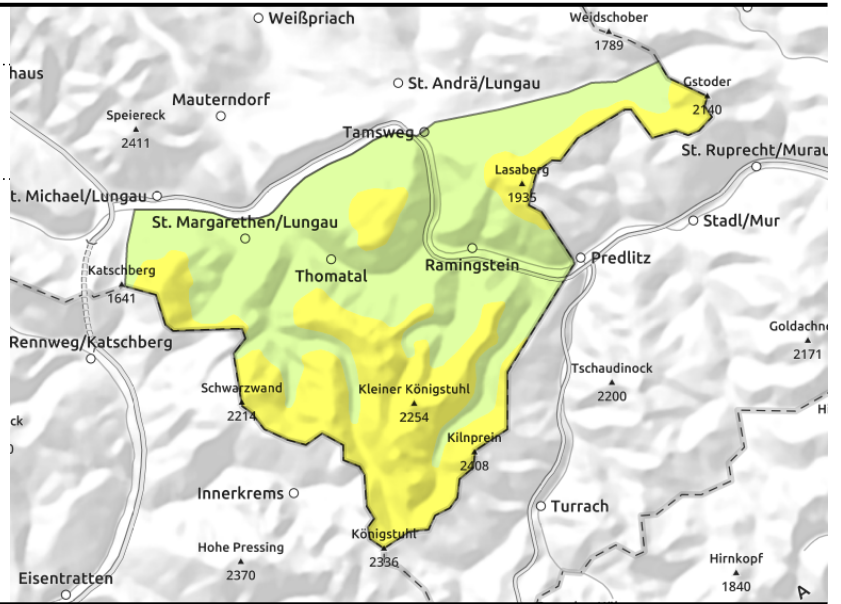
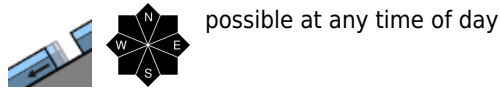
Danger ratings



Expositions



Nockberge



Avoid zones below glide cracks

Avalanche danger is moderate above the treeline, danger below that altitude is low.
 Main problem: still glide-snow avalanches, which can release at any time of day in steep terrain where the ground is smooth (grass, rocks). Avalanches generally remain small-to-medium sized.

Snowpack structure

The snowpack was able to settle well, the surface is often melt-freeze encrusted. The inner layers are well bonded. Weak layer: in transitions to the warm ground.

Weather

On Thursday, heavy cloud cover from the start, light minor snowfall will later be possible north of the Salzach, snowfall level at 1000 to 1200 m. In the Tauern it will remain dry. Visibility often reduced due to clouds, in the north due to showers. Later on from the northwest, precipitation, intensifying in the evening, extending also to southern mountain ranges. Snowfall level will fluctuate around 1200 m. Westerly winds will be brisk (50 km/hr), intensify to storm strength by evening (100 km/hr). At 2000 m: -2 degrees.

Outlook

On Friday and Saturday, northerly storm-strength winds, heavy snowfall. Marked rise in avalanche danger.

Translated by Jeffrey McCabe, www.creativtrans.com

Avalanche problems



Danger ratings



Expositions

