

Glide-snow avalanches still dominate



Osterhorngruppe, Gamsfeldgruppe, Untersbergstock, Chiemgauer Alpen, Heutal, Reiteralpe, Oberpinzgauer Grasberge, Kitzbüheler Alpen, Glemmtal, Dientner Grasberge, Pongauer Grasberge, Niedere Tauern Nord, Goldberggruppe Nord, Niedere Tauern Alpenhauptkamm, Niedere Tauern Süd



Loferer und Leoganger Steinberge, Steinernes Meer, Hochkönig, Hagengebirge, Göllstock, Tennengebirge, Gosaukamm, Großvenedigergruppe Nord, Glocknergruppe Nord, Großvenedigergruppe Alpenhauptkamm, Glocknergruppe Alpenhauptkamm, Goldberggruppe Alpenhauptkamm, Ankogelgruppe, Muhr



forestline

Nockberge



Avalanche problems



Danger ratings

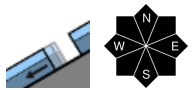
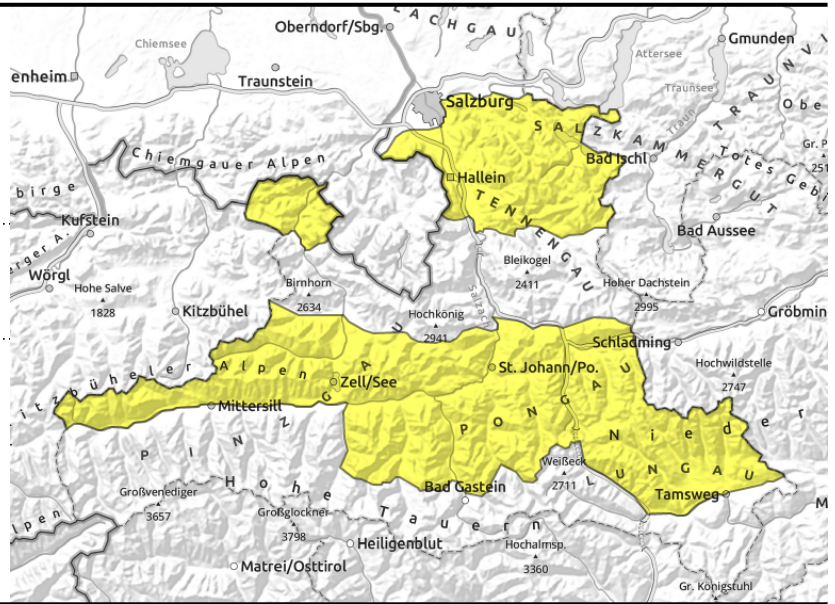


Expositions



valid for: **Wednesday, 20.12.2023**

Osterhorngruppe, Gamsfeldgruppe, Untersbergstock, Chiemgauer Alpen, Heutal, Reiteralpe, Oberpinzgauer Grasberge, Kitzbüheler Alpen, Glemmtal, Dientner Grasberge, Pongauer Grasberge, Niedere Tauern Nord, Goldberggruppe Nord, Niedere Tauern Alpenhauptkamm, Niedere Tauern Süd



possible at any time of day

Avoid zones below glide cracks

Avalanche danger is moderate.

Main problem: still glide-snow avalanches, which can release at any time of day in steep terrain where the ground is smooth (grass, rocks). Avalanches generally remain small-to-medium sized.

A few cm of fresh snow and brisk W/NW winds: fresh snowdrifts being generated, but unlikely to trigger (no weak layer).

Snowpack structure

The snowpack was able to settle due to the mild temperatures and sunshine. The snowpack layers are well bonded to one another. Weak layer most possible in transitions to the warm ground.

Weather

Wednesday morning: cloud cover intensifying, a bit of snowfall (5 cm), snowfall level at 1000 m. Poor visibility. In afternoon, visibility will improve, brief snow showers are still possible. Winds will be brisk from W/NW (50 km/hr). At 2000 m: 0 degrees in early morning, dropping to -7 degrees by evening.

Outlook

On Thursday some fresh snow, brisk winds (briefly from the south), but little change. On Friday and Saturday: NW storm-strength winds, marked increase in avalanche danger.

Avalanche problems



Danger ratings

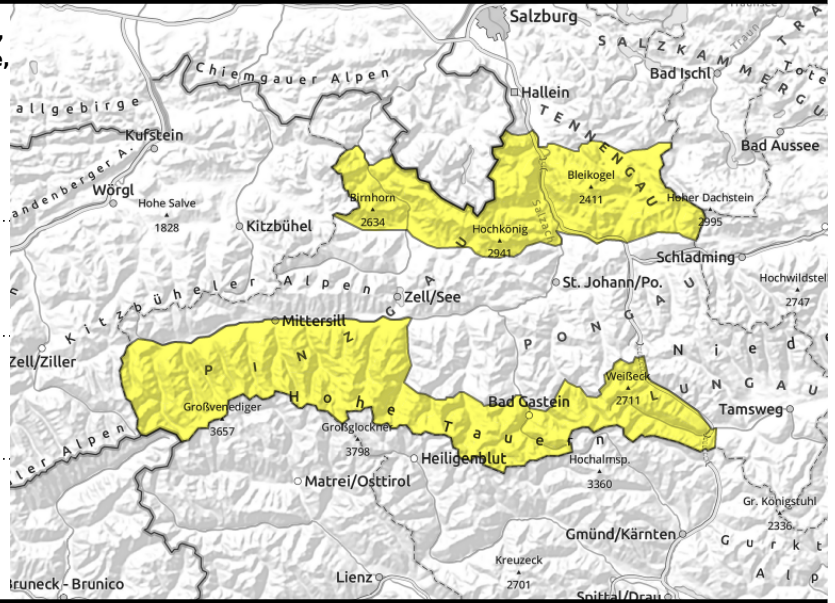


Expositions



valid for: **Wednesday, 20.12.2023**

Loferer und Leoganger Steinberge, Steinernes Meer, Hochkönig, Hagengebirge, Göllstock, Tennengebirge, Gosaukamm, Großvenedigergruppe Nord, Glocknergruppe Nord, Großvenedigergruppe Alpenhauptkamm, Glocknergruppe Alpenhauptkamm, Goldberggruppe Alpenhauptkamm, Ankogelgruppe, Muhr



possible at any time of day



near ridges, in gullies and bowls

Avoid zones below glide cracks

Avalanche danger is moderate.

Main problem: still glide-snow avalanches, which can release at any time of day in steep terrain where the ground is smooth (grass, rocks). Avalanches generally remain small-to-medium sized, most glide-snow avalanches at 1600-2300 m, possibly slightly higher.

A few cm of fresh snow and brisk W/NW winds: fresh snowdrifts being generated, but unlikely to trigger (no weak layer).

Snowpack structure

The snowpack was able to settle due to the mild temperatures and sunshine. The snowpack layers are well bonded to one another. Weak layer most possible in transitions to the warm ground.

Weather

Wednesday morning: cloud cover intensifying, a bit of snowfall (5 cm), snowfall level at 1000 m. Poor visibility. In afternoon, visibility will improve, brief snow showers are still possible. Winds will be brisk from W/NW (50 km/hr). At 2000 m: 0 degrees in early morning, dropping to -7 degrees by evening, at 3000 m from -4 to -12 degrees.

Outlook

On Thursday some fresh snow, brisk winds (briefly from the south), but little change. On Friday and Saturday: NW storm-strength winds, marked increase in avalanche danger.

Avalanche problems



Danger ratings

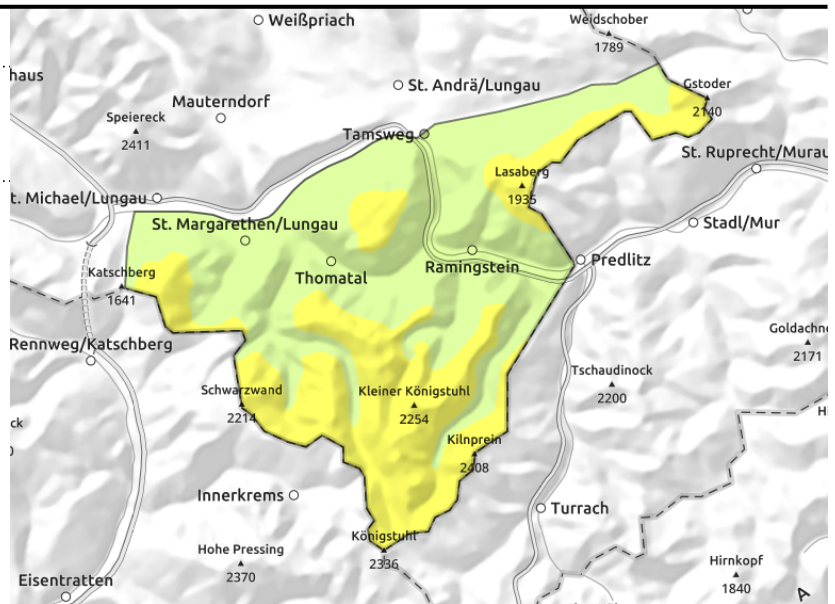
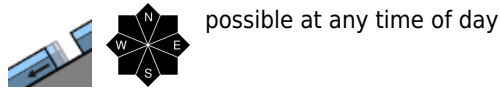


Expositions



valid for: **Wednesday, 20.12.2023**

Nockberge



Avoid zones below glide cracks

Avalanche danger is moderate.

Main problem: still glide-snow avalanches, which can release at any time of day in steep terrain where the ground is smooth (grass, rocks). Avalanches generally remain small-to-medium sized.

Snowpack structure

The snowpack was able to settle due to the mild temperatures and sunshine. The snowpack layers are well bonded to one another. Weak layer most possible in transitions to the warm ground.

Weather

Adequate visibility, clouds passing through, it will remain dry. The NW winds will intensify, reach 50 km/hr by evening. At 2000 m: from 0 degrees in the morning dropping to -7 degrees by evening.

Outlook

On Thursday, little change. Storm winds and fresh snow on Friday and Saturday will heighten avalanche danger markedly.

Translated by Jeffrey McCabe, www.creativtrans.com

Avalanche problems



Danger ratings



Expositions

