

Gliding snow situation

	Osterhorngruppe, Gamsfeldgruppe, Untersbergstock, Chiemgauer Alpen, Heutal, Reiteralpe, Kitzbüheler Alpen, Glemmtal, Dientner Grasberge, Goldberggruppe Nord, Pongauer Grasberge, Tennengebirge, Gosaukamm, Niedere Tauern Nord, Niedere Tauern Alpenhauptkamm, Niedere Tauern Süd, Oberpinzgauer Grasberge	
	Steinernes Meer, Hochkönig, Hagengebirge, Göllstock, Loferer und Leoganger Steinberge, Großvenedigergruppe Nord, Großvenedigergruppe Alpenhauptkamm, Glocknergruppe Nord, Glocknergruppe Alpenhauptkamm, Goldberggruppe Alpenhauptkamm, Ankogelgruppe, Muhr	
	forestline Nockberge	

Avalanche problems



Danger ratings

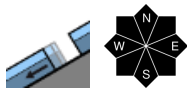
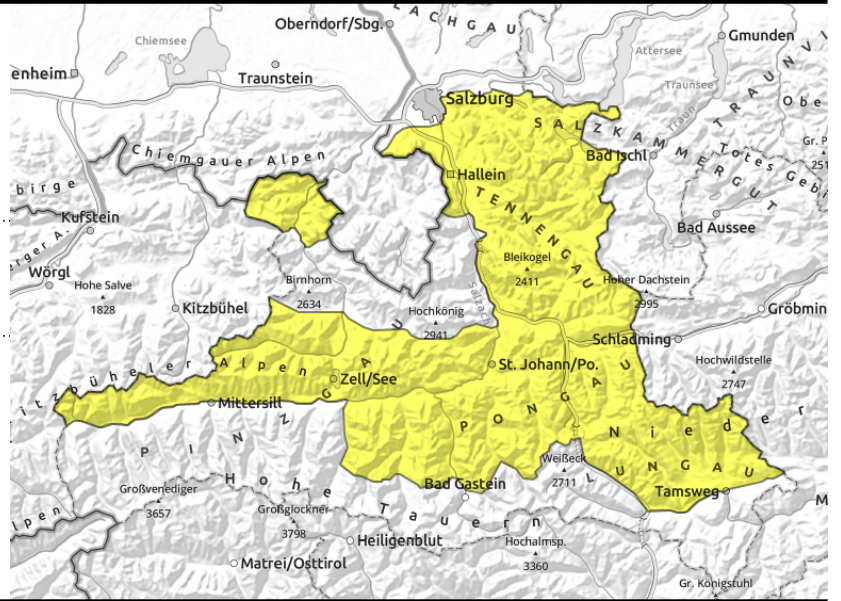


Expositions



valid for: **Tuesday, 19.12.2023**

Osterhorngruppe, Gamsfeldgruppe, Untersbergstock, Chiemgauer Alpen, Heutal, Reiteralpe, Kitzbüheler Alpen, Glemmtal, Dientner Grasberge, Goldberggruppe Nord, Pongauer Grasberge, Tennengebirge, Gosaukamm, Niedere Tauern Nord, Niedere Tauern Alpenhauptkamm, Niedere Tauern Süd, Oberpinzgauer Grasberge



possible at any time of day

Avoid zones below glide cracks

Avalanche danger is moderate.

Main problem: glide-snow avalanches, which can release at any time of day in steep terrain where the ground is smooth (grass, rocks). Avalanches generally remain small-to-medium sized.

In sun-drenched rocky terrain, isolated small loose-snow avalanches can release.

A small slab can trigger most easily in shady extremely steep gullies at high altitude.

Snowpack structure

The snowpack was able to settle due to the mild temperatures and sunshine. The snowpack layers are well bonded to one another. Weak layer most possible in transitions to the warm ground. On shady wind-protected slopes: powder snow. Elsewhere: melt-freeze crusts.

Weather

Tuesday will bring sunshine from the start and very mild temperatures, the zero-degree level ascending to 3300 m. Distant visibility will be excellent in the dry air. Hardly any wind. At 2000 m: 8 degrees; at 3000 m: 2 degrees. In the evening clouds will move in from the west, become heavier by morning. South of the limestone Alps, the early part of the night will be clear.

Outlook

On Wednesday temperatures will drop, winds arise, wet loose-snow avalanches will cease to be a concern, gliding snow situation will persist. Fresh snowfall will initially be too little to generate fresh drifts.

Avalanche problems



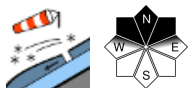
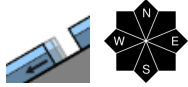
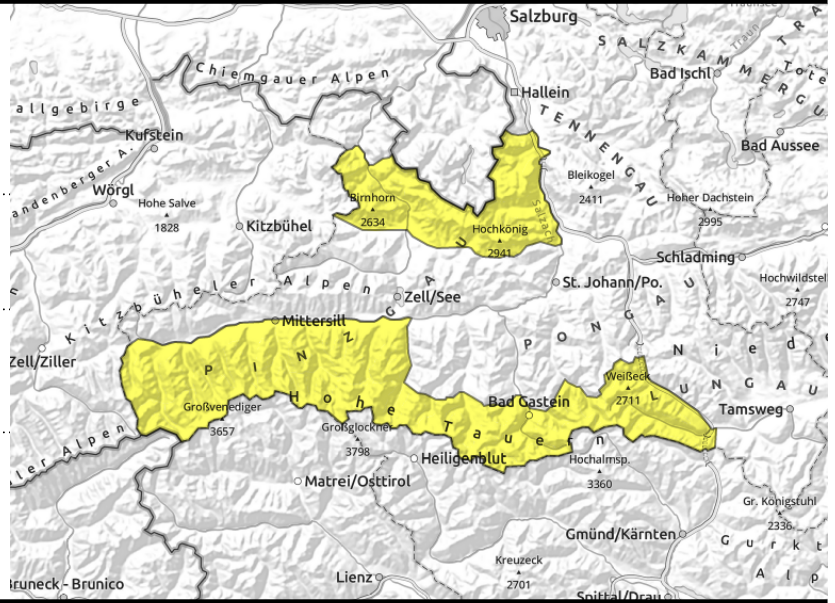
Danger ratings



Expositions



Steinernes Meer, Hochkönig, Hagengebirge, Göllstock, Loferer und Leoganger Steinberge, Großvenedigergruppe Nord, Großvenedigergruppe Alpenhauptkamm, Glocknergruppe Nord, Glocknergruppe Alpenhauptkamm, Goldberggruppe Alpenhauptkamm, Ankogelgruppe, Muhr



Attentiveness still required to the last snowdrifts

Avalanche danger is moderate.

Main problem: glide-snow avalanches, which can release at any time of day in steep terrain where the ground is smooth (grass, rocks). Avalanches generally remain small-to-medium sized. Most glide-snow avalanches occur at 1600-2300 m, possibly up to 2500 m.

The snowdrifts from last week can trigger a small-to-medium slab with large additional loading or from 1 person in extremely steep terrain in isolated cases, most likely in wind-loaded shady gullies. In sun-drenched rocky terrain, isolated small loose-snow avalanches can release.

Snowpack structure

The snowpack was able to settle due to the mild temperatures and sunshine. The snowpack layers are well bonded to one another. Weak layer most possible in transitions to the warm ground. On shady wind-protected slopes: powder snow. Elsewhere: melt-freeze crusts. No signs of heightened likelihood of triggering.

Weather

Tuesday will bring sunshine from the start and very mild temperatures, the zero-degree level ascending to 3300 m. Distant visibility will be excellent in the dry air. Hardly any wind. At 2000 m: 8 degrees; at 3000 m: 2 degrees. In the evening clouds will move in from the west, become heavier by morning.

Outlook

On Wednesday temperatures will drop, winds arise, wet loose-snow avalanches will cease to be a concern, gliding snow situation will persist. Fresh snowfall will initially be too little to generate fresh drifts.

Avalanche problems



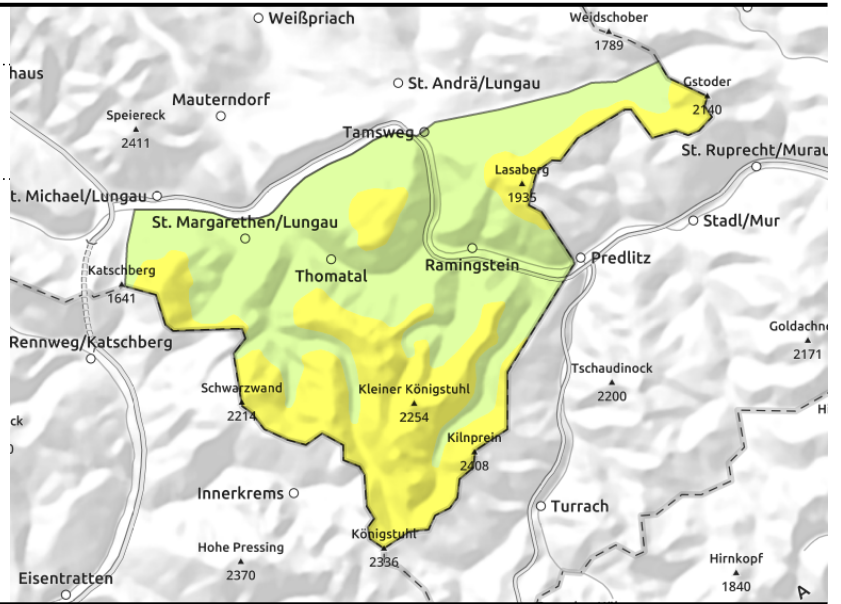
Danger ratings



Expositions



Nockberge



Avoid zones below glide cracks

Avalanche danger above the treeline is moderate.

Main problem: glide-snow avalanches, which can release at any time of day in steep terrain where the ground is smooth (grass, rocks). Avalanches generally remain small-to-medium sized.

In sun-drenched rocky terrain, isolated small loose-snow avalanches can release.

A small slab can trigger most easily in shady extremely steep gullies at high altitude.

Snowpack structure

The snowpack was able to settle due to the mild temperatures and sunshine. The snowpack layers are well bonded to one another. Weak layer most possible in transitions to the warm ground. On shady wind-protected slopes: powder snow. Elsewhere: melt-freeze crusts. No signs of heightened likelihood of triggering.

Weather

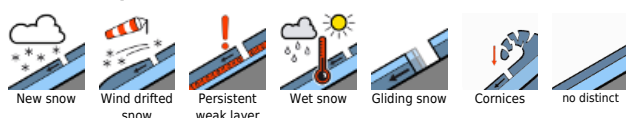
Tuesday will bring sunshine from the start and very mild temperatures, the zero-degree level ascending to 3300 m. Distant visibility will be excellent in the dry air. Hardly any wind. At 2000 m: 8 degrees; at 3000 m: 2 degrees. In the evening clouds will move in from the west, become heavier by morning.

Outlook

On Wednesday temperatures will drop, winds arise, wet loose-snow avalanches will cease to be a concern, gliding snow situation will persist.

Translated by Jeffrey McCabe, www.creativtrans.com

Avalanche problems



Danger ratings



Expositions

