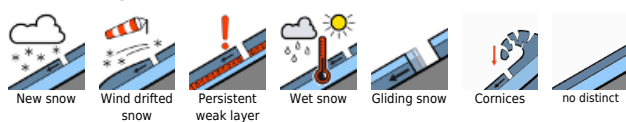


Fresh trigger-sensitive drifts at high altitudes & gliding snow: caution

	<p>Oberpinzgauer Grasberge, Kitzbüheler Alpen, Glemmtal, Chiemgauer Alpen, Heutal, Reiteralpe, Dientner Grasberge, Pongauer Grasberge, Tennengebirge, Gosaukamm, Goldberggruppe Nord, Niedere Tauern Nord, Niedere Tauern Alpenhauptkamm</p>	
	<p>Untersbergstock, Osterhorngruppe, Gamsfeldgruppe</p>	
	<p>2000 m Nockberge, Niedere Tauern Süd, Ankogelgruppe, Muhr</p>	
	<p>2300 m Großvenedigergruppe Nord, Großvenedigergruppe Alpenhauptkamm, Glocknergruppe Nord, Glocknergruppe Alpenhauptkamm, Goldberggruppe Alpenhauptkamm, Steinernes Meer, Hochkönig, Hagengebirge, Göllstock, Loferer und Leoganger Steinberge</p>	

Avalanche problems



Danger ratings

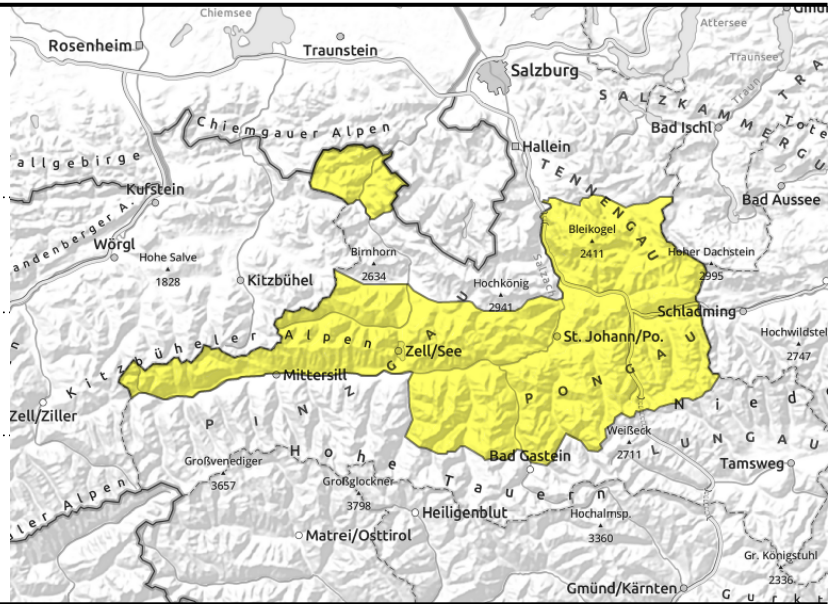


Expositions



valid for: **Monday, 11.12.2023**

Oberpinzgauer Grasberge, Kitzbüheler Alpen, Glemmtal, Chiemgauer Alpen, Heutal, Reiteralpe, Dientner Grasberge, Pongauer Grasberge, Tennengebirge, Gosaukamm, Goldberggruppe Nord, Niedere Tauern Nord, Niedere Tauern Alpenhauptkamm



on steep grassy slopes, possible anytime



distant from ridges, behind protruberances, in gullies, steep bowls

Avoid fresh drifts and glide cracks

Gliding snow activity will remain upright. Danger zones occur in all aspects up to 2400 m. Glide-snow avalanches can trigger anytime on steep grassy slopes and smooth rocky ground, and reach medium size. Avoid zones below glide cracks.

Fresh snowdrifts are accumulating, trigger-sensitive above 2000 m, difficult to recognize on Monday. Danger zones occur esp. on NW/N/SE facing slopes, increase with ascending altitude, releases can reach medium size.

Due to rain impact and mild temperatures, small wet-snow avalanches are possible on extremely steep slopes at low and intermediate altitudes.

Snowpack structure

On smooth ground (grass, rocks) which are steep enough, the entire snowpack can glide.

Fresh snowdrift accumulations esp on shady high altitude slopes lie atop a loose snowpack and are prone to triggering there.

Weather

On Monday, visibility initially reduced due to fog and precipitation. Snowfall level at 1500 m, heavy showers will bring 10-20 cm of fresh snow at high altitudes by noon. Towards the end of this bout of precipitation, winds will slacken off, be blowing mostly at moderate strength from the west. In the afternoon, dry weather conditions. At 2000 m: -5 to 0 degrees; at 1000 m, 0 to +4 degrees.

Outlook

Avalanche danger will not change.

Avalanche problems



Danger ratings



Expositions



valid for: **Monday, 11.12.2023**

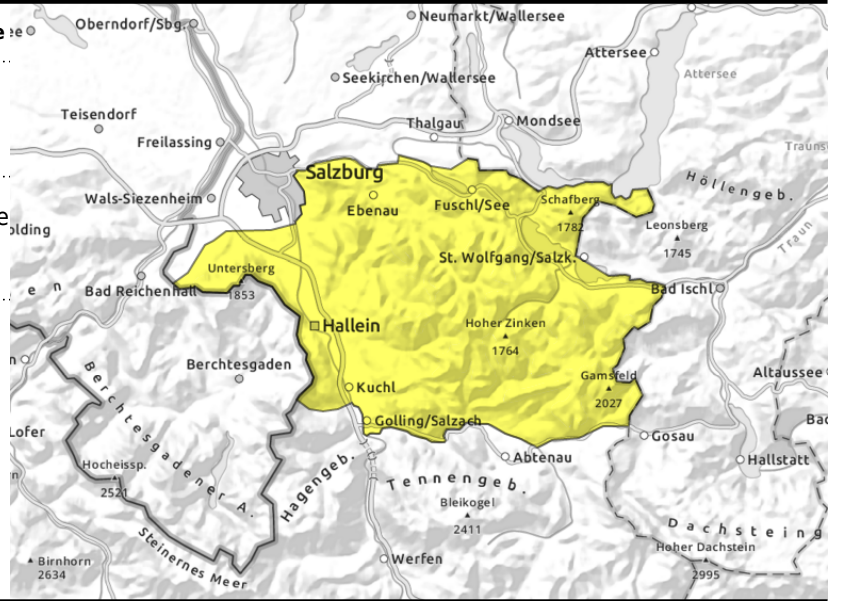
Untersbergstock, Osterhorngruppe, Gamsfeldgruppe



in steep grassy terrain, possible anytime



isolated, in summit zones, behind protruberances



Avoid zones below glide cracks, beware fresh drifts

Gliding snow activity will increase on Monday. Danger zones occur in all aspects up to 2400 m. Glide-snow avalanches can trigger anytime on steep grassy slopes and smooth rocky ground, and reach medium size. Avoid zones below glide cracks.

Fresh snowdrifts will accumulate in summit zones and be difficult to recognize on Monday. Danger zones occur esp. on very steep shady slopes, releases mostly small-sized.

Due to rain impact and mild temperatures, small wet-snow avalanches are possible on extremely steep slopes at low and intermediate altitudes.

Snowpack structure

Fresh snowdrift accumulations esp on shady high altitude slopes lie atop a loose snowpack and are prone to triggering there.

On smooth ground (grass, rocks) which are steep enough, the entire snowpack can glide over the ground.

Weather

On Monday, visibility initially reduced due to fog and precipitation. Snowfall level at 1500 m, heavy showers will bring 10-20 cm of fresh snow at high altitudes by noon. Towards the end of this bout of precipitation, winds will slacken off, be blowing mostly at moderate strength from the west. In the afternoon, dry weather conditions. At 2000 m: -5 to 0 degrees; at 1000 m, 0 to +4 degrees, at 3000 m, -5 degrees.

Outlook

Avalanche danger will not change.

Avalanche problems



Danger ratings



Expositions



valid for: **Monday, 11.12.2023**

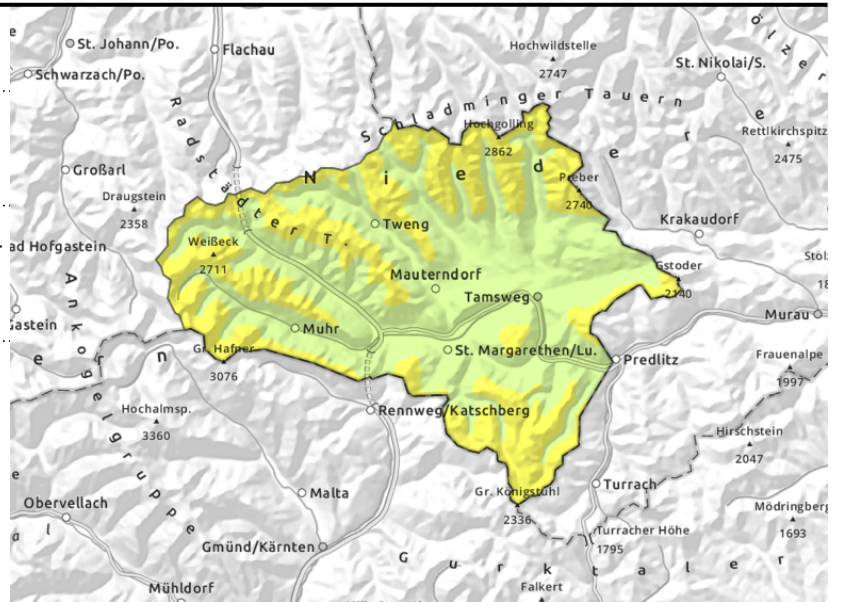
Nockberge, Niedere Tauern Süd, Ankogelgruppe, Muhr



distant from ridges, in gullies + steep bowls, behind protruberances



on steep grassy slopes, possible anytime



Avoid fresh snowdrifts and glide cracks

Fresh snowdrift accumulations are often prone to triggering and difficult to recognize on Monday. Danger zones occur in gullies and bowls above 2300 m on NW/N/SE facing slopes, increase with ascending altitude, mostly medium-sized.

Gliding snow activity will remain upright. Danger zones occur in all aspects up to 2400 m. Glide-snow avalanches can trigger anytime on steep grassy slopes and smooth rocky ground, and reach medium size. Avoid zones below glide cracks.

Above 2500 m, weak layers in the old snowpack can be triggered. Danger zones occur esp. on shady slopes in transitions from shallow to deeper snow, triggering usually requires large additional loading. Superficial releases (drifts) can fracture down to more deeply embedded layers of the snowpack, in isolated cases grow to large size.

Due to rain impact and mild temperatures, small wet-snow avalanches are possible on extremely steep slopes at low and intermediate altitudes.

Snowpack structure

Fresh snowdrift accumulations esp on shady high altitude slopes lie atop a loose snowpack and are prone to triggering there.

The lowermost part of the snowpack has numerous melt-freeze crusts between which are faceted crystals, esp. on north-facing slopes and at high altitudes. The weak layers are most prevalent on shady slopes with shallow snow.

On smooth ground (grass, rocks) on slopes which are sufficiently steep, the entire snowpack can glide downwards.

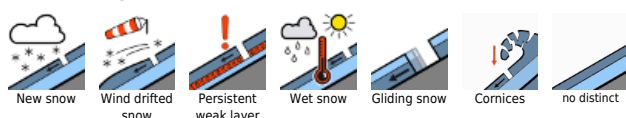
Weather

On Monday, visibility initially reduced due to fog and precipitation. Snowfall level at 1500 m, heavy showers will bring 10-20 cm of fresh snow at high altitudes by noon. Towards the end of this bout of precipitation, winds will slacken off, be blowing mostly at moderate strength from the west. In the afternoon, dry weather conditions. At 2000 m: -5 to 0 degrees; at 1000 m, +2 degrees.

Outlook

Avalanche danger will not change.

Avalanche problems



Danger ratings

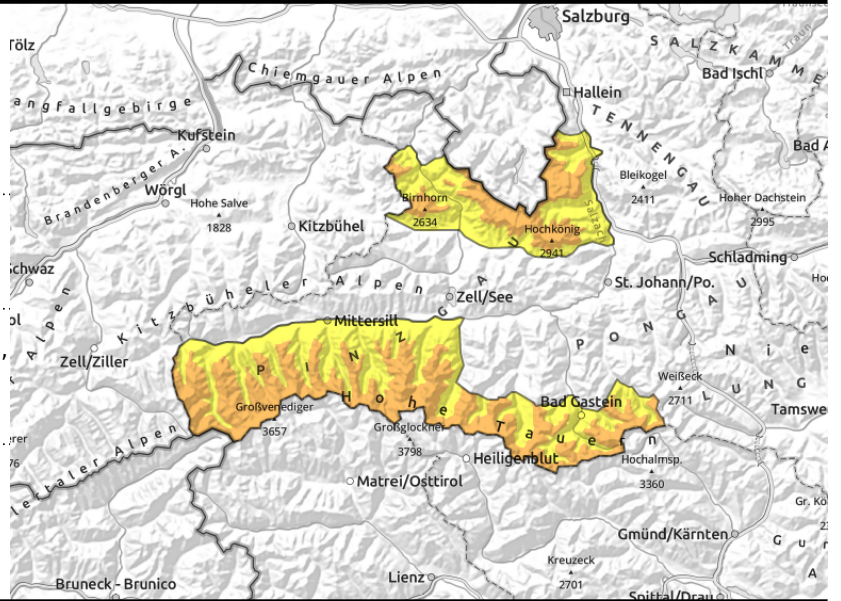


Expositions



valid for: **Monday, 11.12.2023**

Großvenedigergruppe Nord, Großvenedigergruppe Alpenhauptkamm, Glocknergruppe Nord, Glocknergruppe Alpenhauptkamm, Goldberggruppe Alpenhauptkamm, Steinernes Meer, Hochkönig, Hagengebirge, Göllstock, Loferer und Leoganger Steinberge



near to and distant from ridges, behind protruberances, in gullies, steep bowls

on steep grassy slopes, possible anytime

Fresh trigger-sensitive drifts increasing at high altitudes: caution

Fresh snowdrift accumulations are often prone to triggering and difficult to recognize on Monday. Danger zones occur in gullies and bowls above 2300 m on NW/N/SE facing slopes, increase with ascending altitude, mostly medium-sized.

Gliding snow activity will remain upright. Danger zones occur in all aspects up to 2400 m. Glide-snow avalanches can trigger anytime on steep grassy slopes and smooth rocky ground, and reach medium size. Avoid zones below glide cracks.

Above 2600 m, weak layers in the old snowpack can be triggered. Danger zones occur esp. on shady slopes in transitions from shallow to deeper snow, triggering usually requires large additional loading. Superficial releases (drifts) can fracture down to more deeply embedded layers of the snowpack, in isolated cases grow to large size.

Due to rain impact and mild temperatures, small wet-snow avalanches are possible on extremely steep slopes at low and intermediate altitudes.

Snowpack structure

Fresh snowdrift accumulations esp on shady high altitude slopes lie atop a loose snowpack and are prone to triggering there.

On smooth ground (grass, rocks) which are steep enough, the entire snowpack can glide.

The lowermost part of the snowpack has numerous melt-freeze crusts between which are faceted crystals, esp. on north-facing slopes and at high altitudes. The weak layers are most prevalent on shady slopes with shallow snow.

Weather

On Monday, visibility initially reduced due to fog and precipitation. Snowfall level at 1500 m, heavy showers will bring 10-20 cm of fresh snow at high altitudes by noon. Towards the end of this bout of precipitation, winds will slacken off, be blowing mostly at moderate strength from the west. In the afternoon, dry weather conditions. At 2000 m: -5 to 0 degrees; at 1000 m, 0 to +4 degrees, at 3000 m, -5 degrees.

Outlook

Avalanche danger will not change.

Avalanche problems



Danger ratings



Expositions



Avalanche problems



Danger ratings



Expositions

