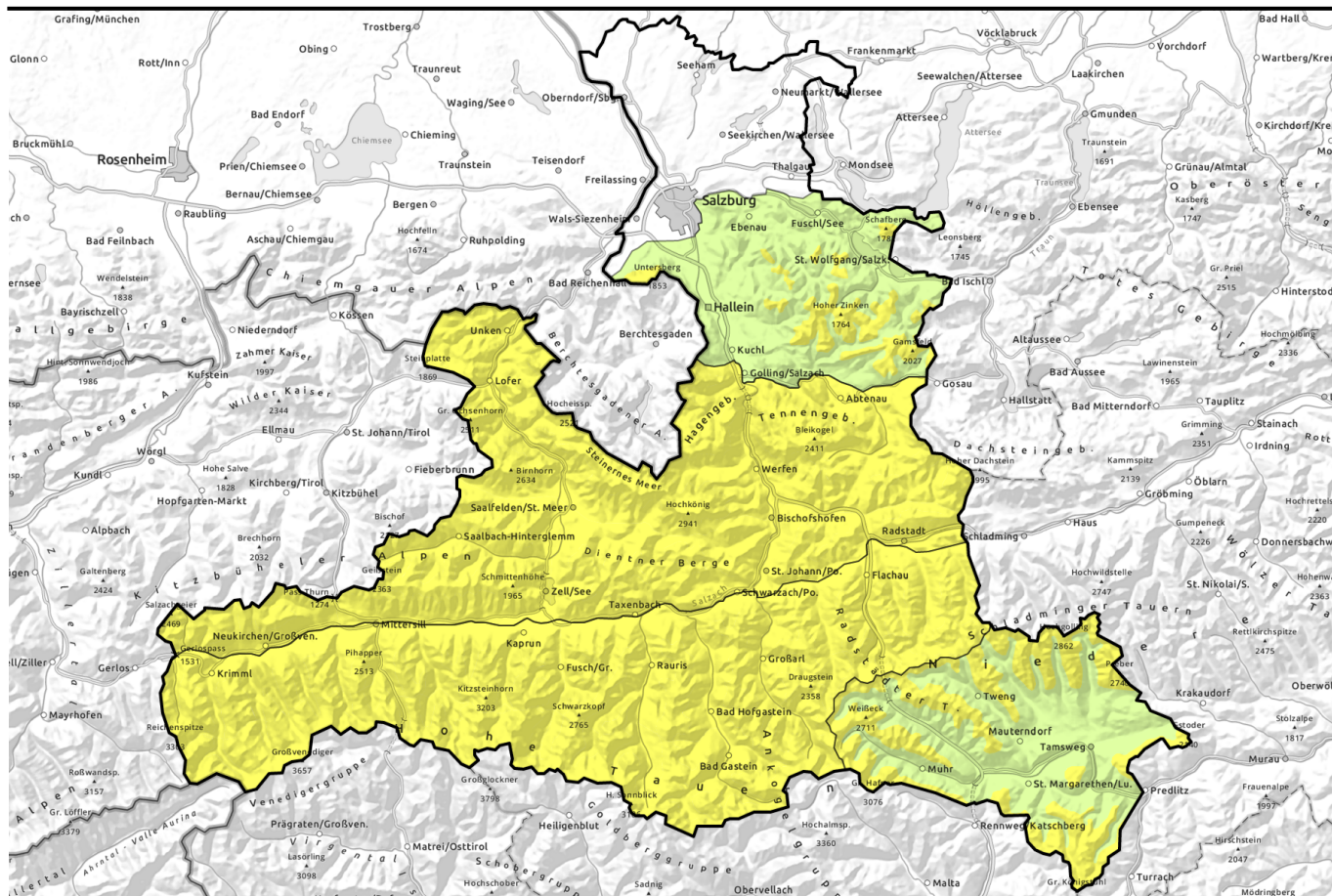


valid for: **Sunday, 10.12.2023**



## Gliding snow and fresh drifts at high altitudes: caution

	<p>Oberpinzgauer Grasberge, Kitzbüheler Alpen, Glemmtal, Loferer und Leoganger Steinberge, Chiemgauer Alpen, Heutal, Reitalpe, Steinernes Meer, Hochkönig, Hagengebirge, Göllstock, Dientner Grasberge, Pongauer Grasberge, Tennengebirge, Gosaukamm</p>	
	<p>Untersbergstock, Osterhorngruppe, Gamsfeldgruppe</p>	
	<p>Großvenedigergruppe Nord, Großvenedigergruppe Alpenhauptkamm, Glocknergruppe Nord, Glocknergruppe Alpenhauptkamm, Goldberggruppe Nord, Goldberggruppe Alpenhauptkamm, Niedere Tauern Nord, Niedere Tauern Alpenhauptkamm</p>	
	<p>Ankogelgruppe, Muhr, Niedere Tauern Süd, Nockberge</p>	

### Avalanche problems



### Danger ratings

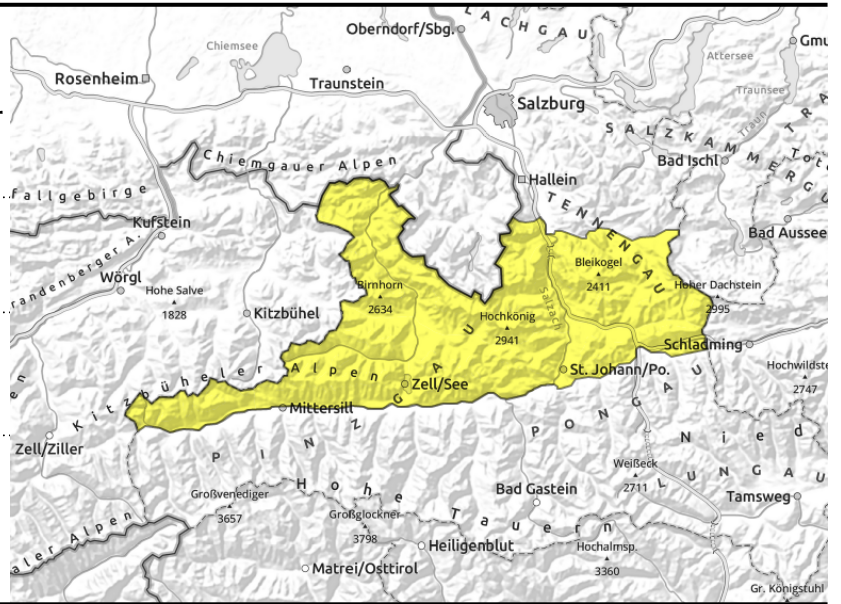


### Expositions



valid for: **Sunday, 10.12.2023**

**Oberpinzgauer Grasberge, Kitzbüheler Alpen, Glemmtal, Loferer und Leoganger Steinberge, Chiemgauer Alpen, Heutal, Reiteralpe, Steinernes Meer, Hochkönig, Hagengebirge, Göllstock, Dientner Grasberge, Pongauer Grasberge, Tennengebirge, Gosaukamm**



on steep grassy slopes, possible anytime



distant from ridges, behind protruberances, in gullies, steep bowls

## Avoid fresh drifts and glide cracks

Gliding snow activity will increase on Sunday. Danger zones occur in all aspects up to 2400 m. Glide-snow avalanches can trigger anytime on steep grassy slopes and smooth rocky ground, and reach medium size. Avoid zones below glide cracks.

Fresh snowdrifts are accumulating above 2000 m. Danger zones occur esp. on NW/SE facing slopes, increase with ascending altitude, releases can reach medium size.

Above 2500 m in th Northern Alps, weak layers in the old snowpack can trigger. Danger zones occur esp. on shady slopes in transitions from shallow to deeper snow. Triggering an avalanches usually requires large additional loading. Snowdrift avalanches can sweep away more deeply embedded layers of the snowpack, in some cases grow to large size.

Due to rain impact and higher temperatures, small loose-snow avalanches can be expected on very steep slopes.

## Snowpack structure

The lowermost part of the snowpack has numerous melt-freeze crusts between which are faceted crystals, esp. on north-facing slopes and at high altitudes. The weak layers are most prevalent on shady slopes with shallow snow.

Fresh snowdrifts are deposited atop loose snowpack surfaces, are prone to triggering.

On smooth ground (grass, rocks) which are steep enough, the entire snowpack can glide.

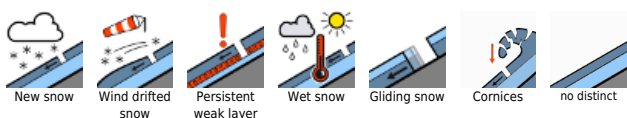
## Weather

On Sunday, visibility is reduced by fog and showers. During the day it will become dryer and more pleasant. By Sunday evening, 5-20 cm fresh snow expected. The snowfall level at 1200 m. Strong-to-stormy westerly winds. Afternoon tempertures at 2000 m 0 to -5 degrees.

## Outlook

Avalanche danger will not change.

### Avalanche problems



### Danger ratings

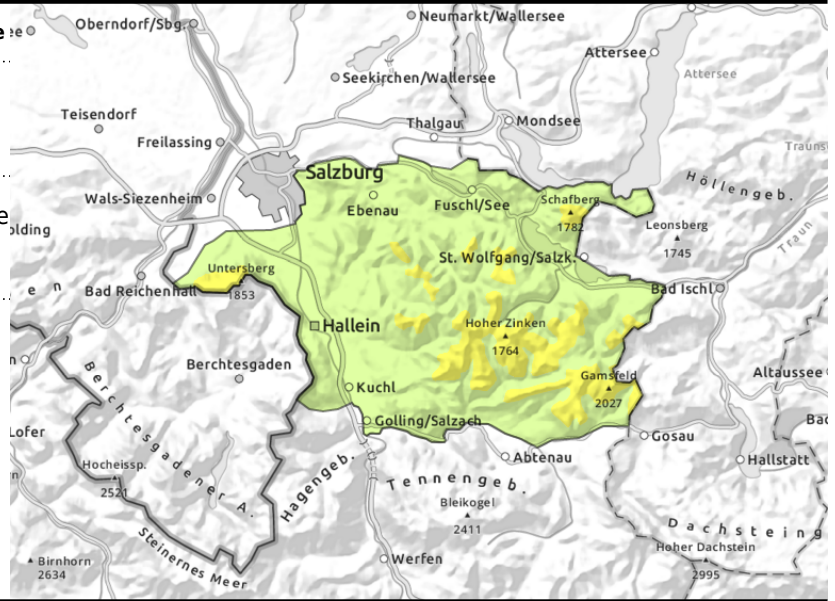
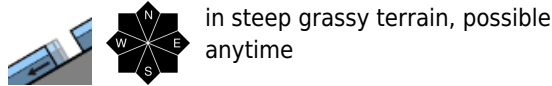


### Expositions



valid for: **Sunday, 10.12.2023**

**Untersbergstock, Osterhorngruppe, Gamsfeldgruppe**



**Avoid fresh drifts and glide cracks**

Gliding snow activity will increase on Sunday. Danger zones occur in all aspects up to 2400 m. Glide-snow avalanches can trigger anytime on steep grassy slopes and smooth rocky ground, and reach medium size. Avoid zones below glide cracks.

Fresh snowdrifts are accumulating above 1800 m. Danger zones occur esp. on NW/SE facing slopes, increase with ascending altitude, releases can reach medium size.

Due to rain impact and higher temperatures, small loose-snow avalanches can be expected on very steep slopes.

**Snowpack structure**

The old snowpack is largely stable. Where fresh drifts lie deposited on loose snow they are prone to triggering. Gliding snow is the main problem.

**Weather**

On Sunday, visibility is reduced by fog and showers. During the day it will become drier and more pleasant. By Sunday evening, 5-20 cm fresh snow expected. The snowfall level at 1200 m. Strong-to-stormy westerly winds. Afternoon temperatures at 2000 m 0 to -5 degrees.

**Outlook**

Avalanche danger will not change.

**Avalanche problems**



**Danger ratings**

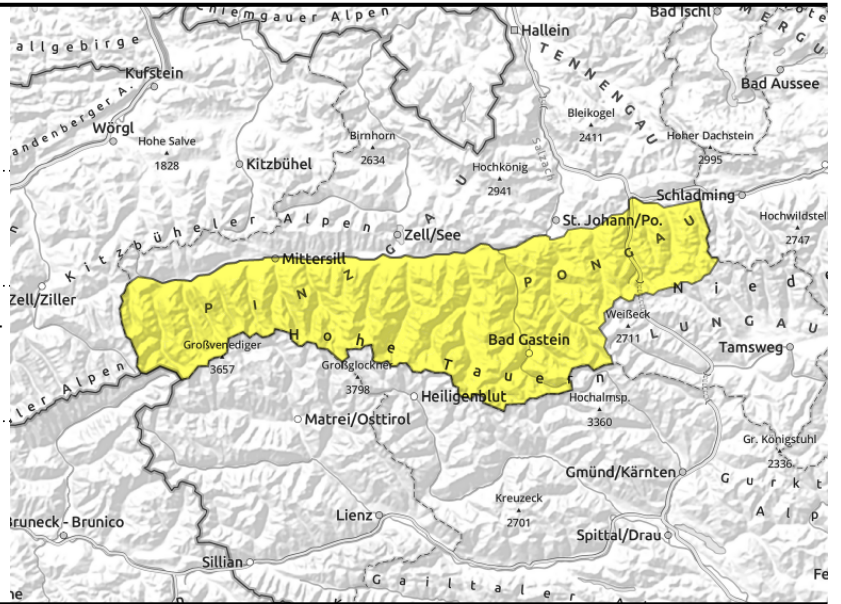


**Expositions**



valid for: **Sunday, 10.12.2023**

**Großvenedigergruppe Nord, Großvenedigergruppe Alpenhauptkamm, Glocknergruppe Nord, Glocknergruppe Alpenhauptkamm, Goldberggruppe Nord, Goldberggruppe Alpenhauptkamm, Niedere Tauern Nord, Niedere Tauern Alpenhauptkamm**



distant from ridges, in gullies + steep bowls, behind protruberances



on steep grassy slopes, possible anytime

## Avoid snowdrifts and glide cracks

Above the treeline, fresh trigger-sensitive snowdrifts are accumulating. Danger zones occur esp. on NW/SE facing slopes, increase with ascending altitude, can reach medium size. Gliding snow activity will increase on Sunday. Danger zones occur in all aspects up to 2400 m. Glide-snow avalanches can trigger anytime on steep grassy slopes and smooth rocky ground, and reach medium size. Avoid zones below glide cracks.

Fresh snowdrifts are accumulating above 1800 m. Danger zones occur esp. on NW/SE facing slopes, increase with ascending altitude, releases can reach medium size.

Due to rain impact and higher temperatures, small loose-snow avalanches can be expected on very steep slopes.

## Snowpack structure

The lowermost part of the snowpack has numerous melt-freeze crusts between which are faceted crystals, esp. on north-facing slopes and at high altitudes. The weak layers are most prevalent on shady slopes with shallow snow.

Fresh snowdrifts are deposited atop loose snowpack surfaces, are prone to triggering.

On smooth ground (grass, rocks) which are steep enough, the entire snowpack can glide.

## Weather

On Sunday, visibility is reduced by fog and showers. During the day it will become drier and more pleasant. By Sunday evening, 5-20 cm fresh snow expected. The snowfall level at 1200 m. Strong-to-stormy westerly winds. Afternoon temperatures at 2000 m 0 to -5 degrees, at 3000 m -10 degrees.

## Outlook

Avalanche danger will not change.

### Avalanche problems



### Danger ratings

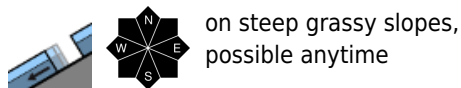
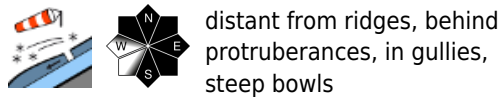


### Expositions



valid for: **Sunday, 10.12.2023**

**Ankogelgruppe, Muhr, Niedere Tauern Süd, Nockberge**



**Avoid fresh drifts and glide cracks**

Gliding snow activity will increase on Sunday. Danger zones occur in all aspects up to 2400 m. Glide-snow avalanches can trigger anytime on steep grassy slopes and smooth rocky ground, and reach medium size. Avoid zones below glide cracks.

Fresh snowdrifts are accumulating above 2000 m. Danger zones occur esp. on NW/SE facing slopes, increase with ascending altitude, releases can reach medium size.

Above 2500 m in th Northern Alps, weak layers in the old snowpack can trigger. Danger zones occur esp. on shady slopes in transitions from shallow to deeper snow. Triggering an avalanches usually requires large additional loading. Snowdrift avalanches can sweep away more deeply embedded layers of the snowpack, in some cases grow to large size.

Due to rain impact and higher temperatures, small loose-snow avalanches can be expected on very steep slopes.

**Snowpack structure**

The lowermost part of the snowpack has numerous melt-freeze crusts between which are faceted crystals, esp. on north-facing slopes and at high altitudes. The weak layers are most prevalent on shady slopes with shallow snow.

Fresh snowdrifts are deposited atop loose snowpack surfaces, are prone to triggering.

On smooth ground (grass, rocks) which are steep enough, the entire snowpack can glide.

**Weather**

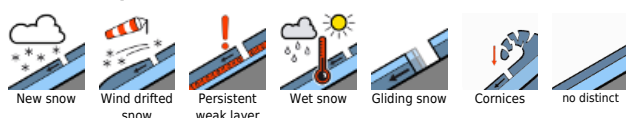
On Sunday, visibility is reduced by fog and showers. During the day it will become dryer and more pleasant. By Sunday evening, 5-20 cm fresh snow expected. The snowfall level at 1200 m. Strong-to-stormy westerly winds. Temperatures at 2000 m -2 to -5 degrees, at 1000 m -1 to -3 degrees.

**Outlook**

Avalanche danger will not change.

Translated by Jeffrey McCabe, [www.creativtrans.com](http://www.creativtrans.com)

**Avalanche problems**



**Danger ratings**



**Expositions**

