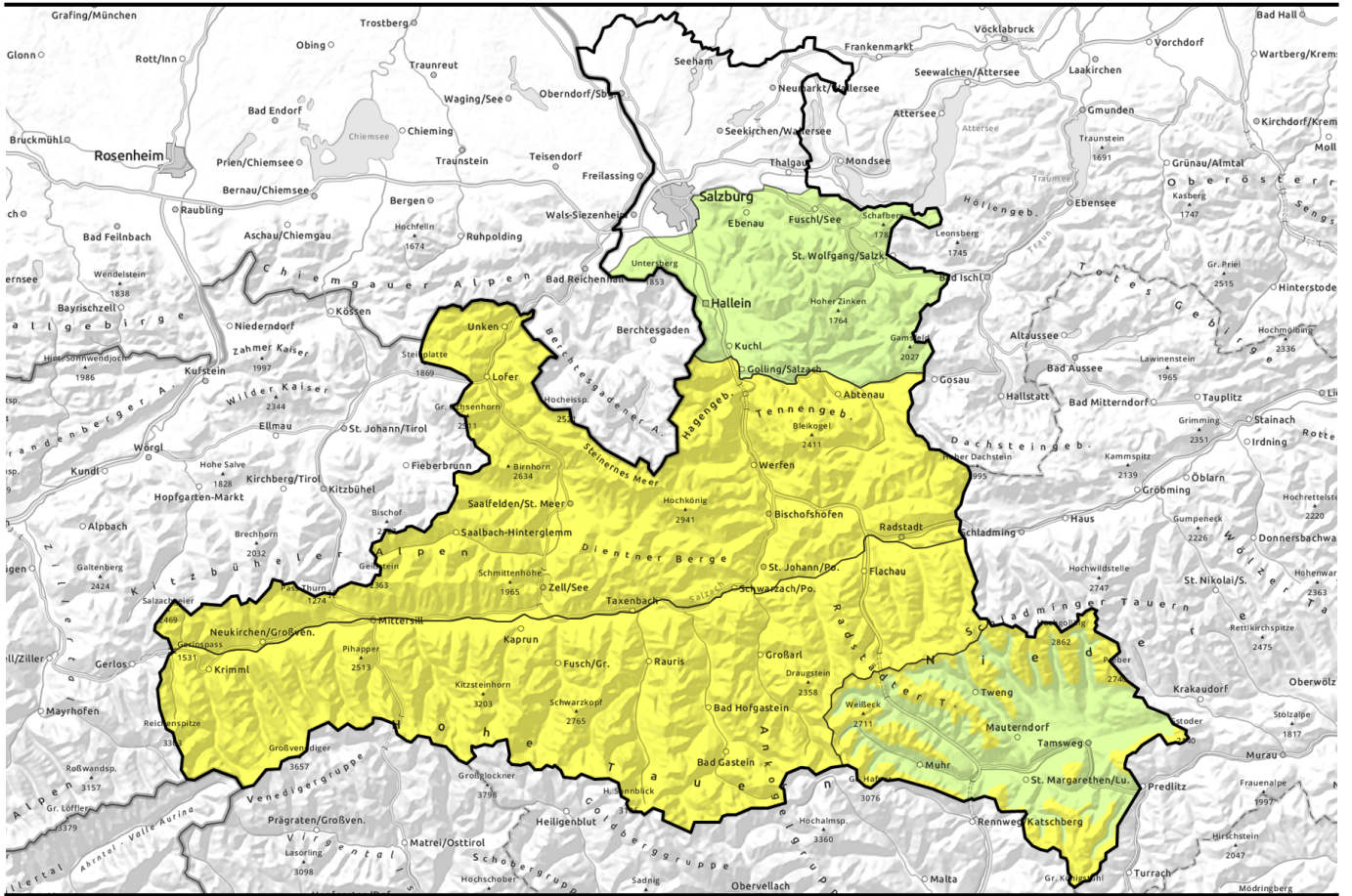


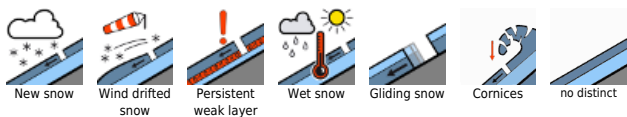
valid for: **Friday, 08.12.2023**



Beware glide-snow problem

	<p>Großvenedigergruppe Alpenhauptkamm, Glocknergruppe Alpenhauptkamm, Goldberggruppe Nord, Goldberggruppe Alpenhauptkamm, Niedere Tauern Alpenhauptkamm, Niedere Tauern Nord, Großvenedigergruppe Nord, Glocknergruppe Nord</p>	
	<p>Oberpinzgauer Grasberge, Kitzbüheler Alpen, Glemmtal, Loferer und Leoganger Steinberge, Steinernes Meer, Hochkönig, Hagengebirge, Göllstock, Dientner Grasberge, Tennengebirge, Gosaukamm, Pongauer Grasberge, Chiemgauer Alpen, Heutal, Reiteralpe</p>	
	<p>Osterhorngruppe, Gamsfeldgruppe, Untersbergstock</p>	
	<p>21 2200 m Ankogelgruppe, Muhr, Niedere Tauern Süd, Nockberge</p>	

Avalanche problems



Danger ratings



Expositions



valid for: **Friday, 08.12.2023**

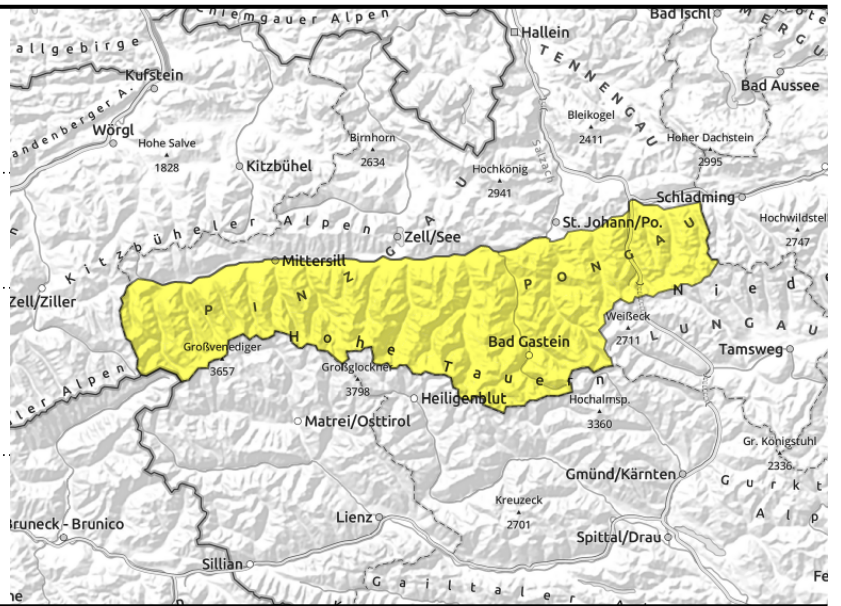
Großvenedigergruppe Alpenhauptkamm, Glocknergruppe Alpenhauptkamm, Goldberggruppe Nord, Goldberggruppe Alpenhauptkamm, Niedere Tauern Alpenhauptkamm, Niedere Tauern Nord, Großvenedigergruppe Nord, Glocknergruppe Nord



triggerable in transitions from shallow to deeper snow in few places in outlying terrain, shady and high alpine slopes



step grassy slopes, any time of day



Persistent weak layer in transitions from shallow to deeper snow

Above 2400 m, weak layers can be triggered. Danger zones occur esp. on shady slopes in transitions from shallow to deeper snow, usually needing large additional loading to trigger, the likelihood to trigger generally low, but large releases are possible.

Below 2400 m glide snow activity can be expected due to rising temperatures. Glide-snow avalanches can reach medium size and release at any time of day, particularly on S/E facing slopes. Avoid zones below glide cracks.

Near ridgelines, trigger-sensitive snowdrifts occur, esp. on N/E facing slopes, increasingly frequent with ascending altitude. The releases are generally small-sized.

Snowpack structure

The lowermost part of the snowpack has numerous melt-freeze crusts between which are faceted crystals, esp. on north-facing slopes and at high altitudes. The weak layers are most prevalent on shady slopes with shallow snow. The fresh snow from last weekend has bonded well with the old snowpack.

Weather

Friday will bring good weather. Above possible fogbanks, visibility is good, though the sunshine is somewhat dampened by clouds. As of midday, cloud cover will increase. Precipitation is not expected before evening. At 2000 m: +2 degrees; at 3000 m: -4 degrees. Mostly light winds.

Outlook

Due to higher temperatures, wet-snow and glide-snow activity will increase on the weekend.

Avalanche problems



Danger ratings

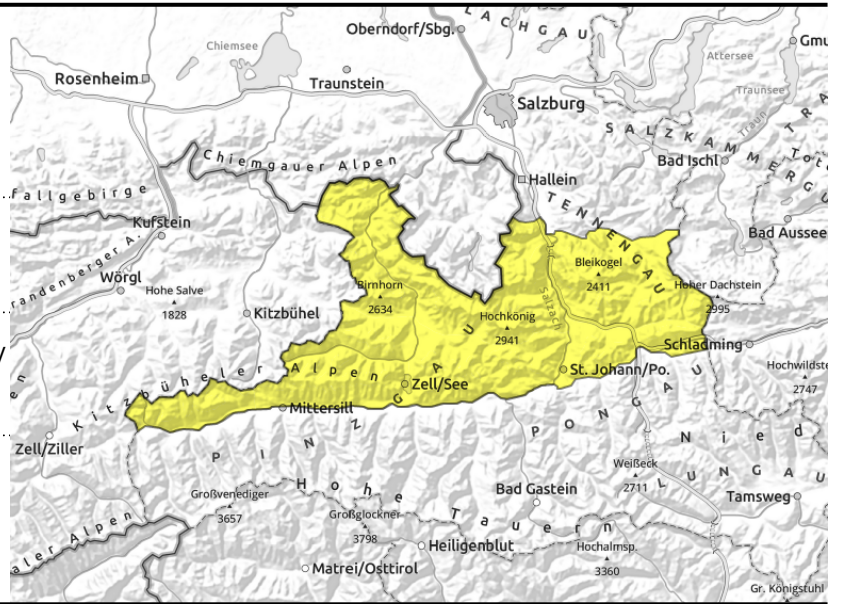


Expositions



valid for: **Friday, 08.12.2023**

Oberpinzgauer Grasberge, Kitzbüheler Alpen, Glemmtal, Loferer und Leoganger Steinberge, Steinernes Meer, Hochkönig, Hagengebirge, Göllstock, Dientner Grasberge, Tennengebirge, Gosaukamm, Pongauer Grasberge, Chiemgauer Alpen, Heutal, Reiteralpe



in steep terrain, possible at any time of day



near ridgelines, behind protruberances, in gullies, steep bowls

Gliding snow is main problem

Below 2400 m amid rising temperatures, continuing glide snow activity can be expected. Glide-snow avalanches can reach medium size and trigger at any time of day, esp. on S/E facing slopes. Avoid zones below glide cracks.

Above 2000 m on shady ridgeline slopes, isolated trigger-sensitive snowdrift accumulations can be expected, usually small-sized.

With rising temperatures, small wet-snow avalanches can be expected in extremely steep terrain.

Snowpack structure

The snowpack is generally stable. Due to higher temperatures, the snowpack is becoming thoroughly wet.

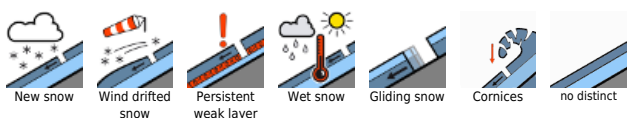
Weather

Friday will bring good weather. Above possible fogbanks, visibility is good, though the sunshine is somewhat dampened by clouds. As of midday, cloud cover will increase. Precipitation is not expected before evening. At 2000 m: +2 degrees; at 3000 m: -4 degrees. Mostly light winds.

Outlook

Due to the increasingly moist snowpack, wet-snow and glide-snow activity will increase on the weekend. Wet-snow avalanches will become more frequent.

Avalanche problems



Danger ratings



Expositions



valid for: **Friday, 08.12.2023**

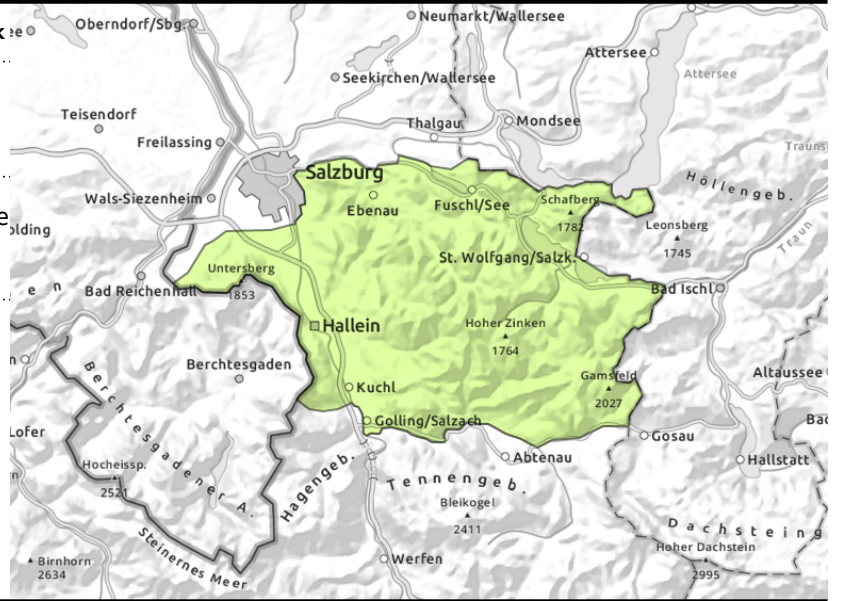
Osterhorngruppe, Gamsfeldgruppe, Untersbergstock



in steep grassy terrain, possible at any time of day



near ridgelines, shallow and small snowdrift masses



Favourable avalanche situation by and large

Glide-snow activity can be expected up to summit levels, due to rising temperatures. They are usually small, can trigger at any time of day. Especially on S/E facing slopes. Avoid zones below glide cracks. Near summits and in high altitude exposed terrain, trigger-sensitive snowdrift accumulations occur near ridgelines, mostly small sized.

As temperatures rise, small wet-snow avalanches can be expected in extremely steep terrain.

Snowpack structure

The snowpack is stable by and large. Due to higher temperatures, the snowpack will become increasingly wet.

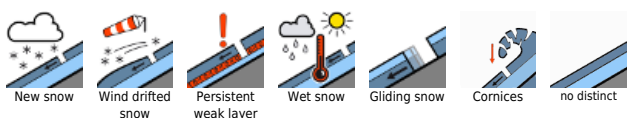
Weather

Friday will bring good weather. Above possible fogbanks, visibility is good, though the sunshine is somewhat dampened by clouds. As of midday, cloud cover will increase. Precipitation is not expected before evening. At 2000 m: +2 degrees; at 3000 m: -4 degrees. Mostly light winds.

Outlook

Due to higher temperatures, wet-snow and glide-snow activity will increase on the weekend.

Avalanche problems



Danger ratings



Expositions



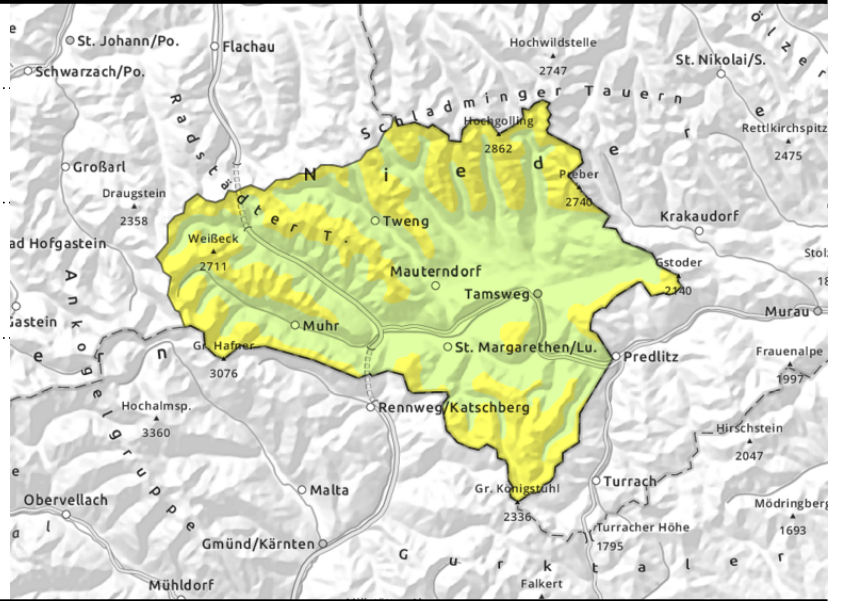
valid for: **Friday, 08.12.2023**

Ankogelgruppe, Muhr, Niedere Tauern Süd, Nockberge



shady and high alpine slopes, triggerable in transitions from shallow to deeper snow

extremely steep grassy terrain



In transitions from shallow to deeper snow: beware persistent weak layer

Above 2200 m in few places, weak layers in the old snowpack can trigger. Danger zones occur esp. on shady slopes in transitions from shallow to deeper snow, usually requiring large additional loading (low likelihood of triggering). Avalanches can grow to medium size.

Below 2400 m glide snow activity can be expected due to rising temperatures. Glide-snow avalanches can reach medium size and release at any time of day, particularly on S/E facing slopes. Avoid zones below glide cracks.

Near ridgelines, trigger-sensitive snowdrifts occur, esp. on N/E facing slopes, increasingly frequent with ascending altitude. The releases are generally small-sized.

Snowpack structure

The lowermost part of the snowpack has numerous melt-freeze crusts between which are faceted crystals, esp. on north-facing slopes and at high altitudes. The weak layers are most prevalent on shady slopes with shallow snow. The fresh snow from last weekend has bonded well with the old snowpack.

Weather

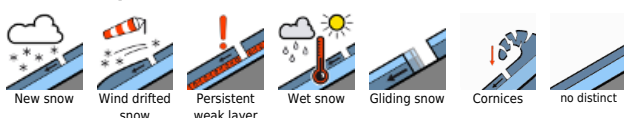
Friday will bring good weather. Above possible fogbanks, visibility is good, though the sunshine is somewhat dampened by clouds. As of midday, cloud cover will increase. Precipitation is not expected before evening. At 2000 m: +2 degrees; at 3000 m: -4 degrees. Mostly light winds.

Outlook

Due to higher temperatures, wet-snow and glide-snow activity will increase on the weekend.

Translated by Jeffrey McCabe, www.creativtrans.com

Avalanche problems



Danger ratings



Expositions

