

Heavy snowfall bringing large amounts

	<p>forestline</p>	<p>Chiemgauer Alpen, Heutal, Reiteralpe, Steinernes Meer, Hochkönig, Hagengebirge, Göllstock, Loferer und Leoganger Steinberge, Osterhorngruppe, Gamsfeldgruppe, Untersbergstock, Pongauer Grasberge, Tennengebirge, Gosaukamm, Dientner Grasberge, Kitzbüheler Alpen, Glemmtal, Oberpinzgauer Grasberge, Großvenedigergruppe Nord, Glocknergruppe Nord, Großvenedigergruppe Alpenhauptkamm, Goldberggruppe Nord, Niedere Tauern Nord, Niedere Tauern Alpenhauptkamm</p>	
	<p>2500 m</p>	<p>Glocknergruppe Alpenhauptkamm, Goldberggruppe Alpenhauptkamm, Ankogelgruppe, Muhr</p>	
	<p>1600 m</p>	<p>Niedere Tauern Süd, Nockberge</p>	

Avalanche problems



Danger ratings

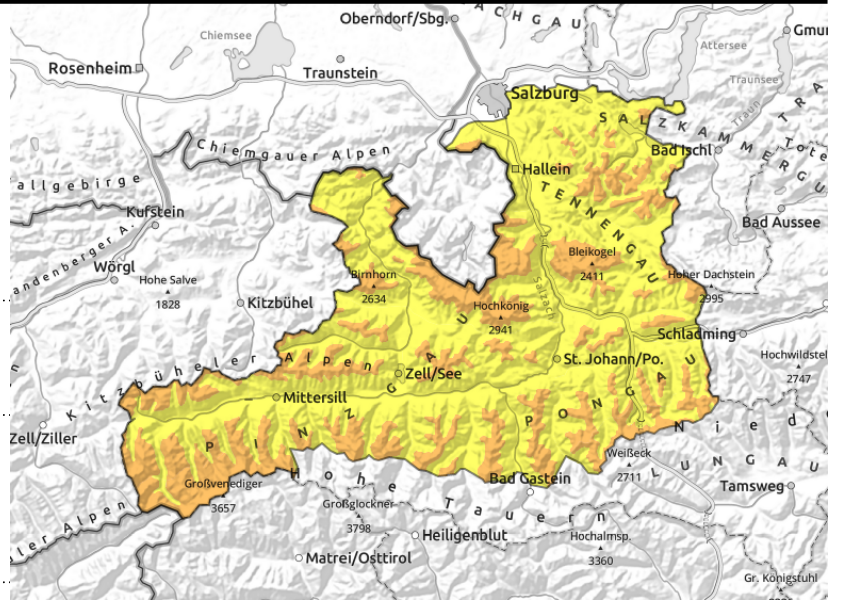


Expositions



valid for: **Saturday, 02.12.2023**

Chiemgauer Alpen, Heutal, Reiteralpe, Steinernes Meer, Hochkönig, Hagengebirge, Göllstock, Loferer und Leoganger Steinberge, Osterhorngruppe, Gamsfeldgruppe, Untersbergstock, Pongauer Grasberge, Tennengebirge, Gosaukamm, Dientner Grasberge, Kitzbüheler Alpen, Glemmtal, Oberpinzgauer Grasberge, Großvenedigergruppe Nord, Glocknergruppe Nord, Großvenedigergruppe Alpenhauptkamm, Goldberggruppe Nord, Niedere Tauern Nord, Niedere Tauern Alpenhauptkamm



forestline



much fresh snow, increasing wind as of midday, fresh snow rapidly increases with ascending altitude



on extremely steep grassy slopes

Deep sink-in depths, snowdrift problem intensifying as of midday

Danger above the timberline is CONSIDERABLE (3), below that altitude MODERATE. On extremely steep slopes, small-to-medium naturally triggered loose-snow avalanches are possible. At high altitudes, also (soft) slab avalanches can be triggered in steep terrain by one sole person and reach medium size. Danger zones are not easy to recognize, but occur in all aspects. For that reason, experience in assessing potential avalanche dangers is imperative in outlying terrain. As winds intensify, fresh trigger-sensitive snowdrifts will accumulate in the afternoon on E/S facing slopes.

Snowpack structure

The most recent snowfall has settled due to higher temperatures. It is at least moist up to 2200m, also due to sprinkling rainfall. Atop this as temperatures drop, heavy snowfall will now be deposited and bond well to the base. On the Main Tauern Ridge fresh snowdrifts have accumulated due to storm-strength southerly foehn winds, these will now be blanketed over by fresher snow. Intensifying W/NW winds will generate new snowdrifts over the course of the day which will be deposited on a loosely-packed and cold base: prone to triggering!

Weather

Friday night will bring intensive snowfall down to low lying areas. By Saturday morning, 20-50 cm is expected, amid ever colder temperatures and only little wind impact. On Saturday the snowfall will continue, visibility will often be severely reduced. By evening, another 10-20 cm will be added. Starting at midday, W/NW winds will begin to transport the snow. Temperatures will drop: at 2000 m from -6 to -12 degrees; at 3000m from -8 to -18 degrees. On Sunday, good visibility and sunshine, with possibility of some fog in the morning. The NW winds will slacken off significantly during the daytime. Slightly higher temperatures. At 2000 m from -15 to -10 degrees; at 3000m -17 degrees.

Outlook

A treacherous situation on Sunday. Backcountry tours make experience in assessing avalanche

Avalanche problems



Danger ratings



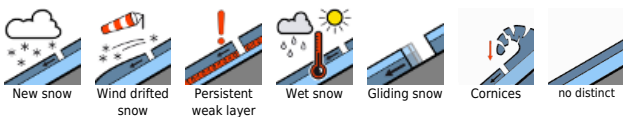
Expositions



valid for: **Saturday, 02.12.2023**

danger imperative. We advise great restraint. The first day of beautiful weather is frequently full of accidents.

Avalanche problems



Danger ratings

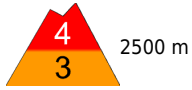


Expositions



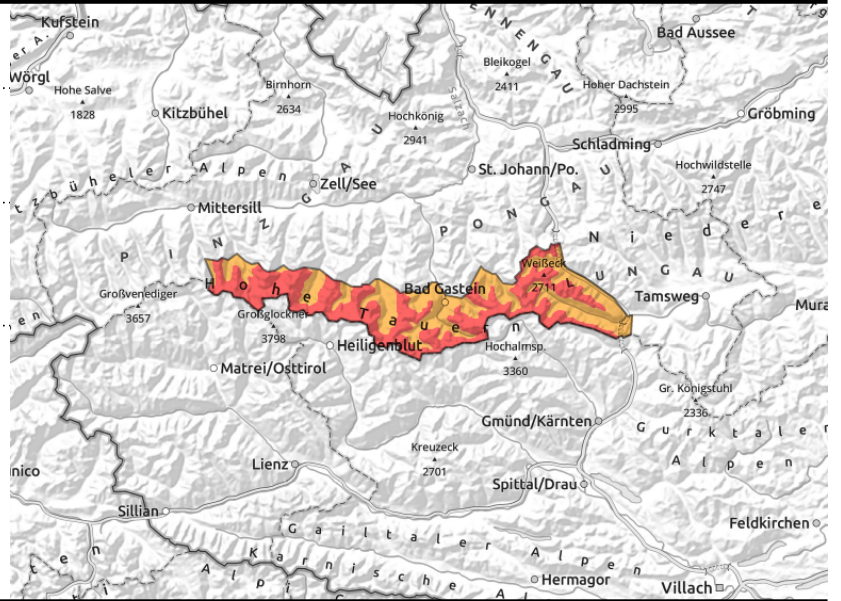
valid for: **Saturday, 02.12.2023**

Glocknergruppe Alpenhauptkamm, Goldberggruppe Alpenhauptkamm, Ankogelgruppe, Muhr



much fresh snow, far-reaching snowdrift accumulations

on extremely steep grassy slopes and over smooth rocks



Wide-ranging and trigger-sensitive snowdrift accumulations at high altitude

Danger will rise to HIGH (4) as early as morning above 2500m, below that altitude danger is CONSIDERABLE (3). In extremely steep terrain, small-to-medium naturally triggered loose-snow avalanches are possible. There are many danger zones for slab avalanches where even one person can trigger a release which can grow to medium size. Danger zones occur in all aspects, particularly in steep gullies and bowls. The avalanche prone locations are nearly impossible to recognize, making touring possibilities much reduced, also due to poor visibility.

Snowpack structure

The most recent snowfall has settled due to higher temperatures. It is at least moist up to 2200m, also due to sprinkling rainfall. Atop this as temperatures drop, heavy snowfall will now be deposited and bond well to the base. On the Main Tauern Ridge fresh snowdrifts have accumulated due to storm-strength southerly foehn winds, these will now be blanketed over by fresher snow. Intensifying W/NW winds will generate new snowdrifts over the course of the day which will be deposited on a loosely-packed and cold base: prone to triggering!

Weather

Friday night will bring intensive snowfall down to low lying areas. By Saturday morning, 20-50 cm is expected, amid ever colder temperatures and only little wind impact. On Saturday the snowfall will continue, visibility will often be severely reduced. By evening, another 10-20 cm will be added. Starting at midday, W/NW winds will begin to transport the snow. Temperatures will drop: at 2000 m from -6 to -12 degrees; at 3000m from -8 to -18 degrees. On Sunday, good visibility and sunshine, with possibility of some fog in the morning. The NW winds will slacken off significantly during the daytime. Slightly higher temperatures. At 2000 m from -15 to -10 degrees; at 3000m -17 degrees.

Outlook

A treacherous situation on Sunday. Backcountry tours make experience in assessing avalanche danger imperative. We advise great restraint. The first day of beautiful weather is frequently full of accidents.

Avalanche problems



Danger ratings

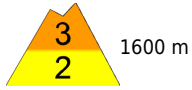


Expositions



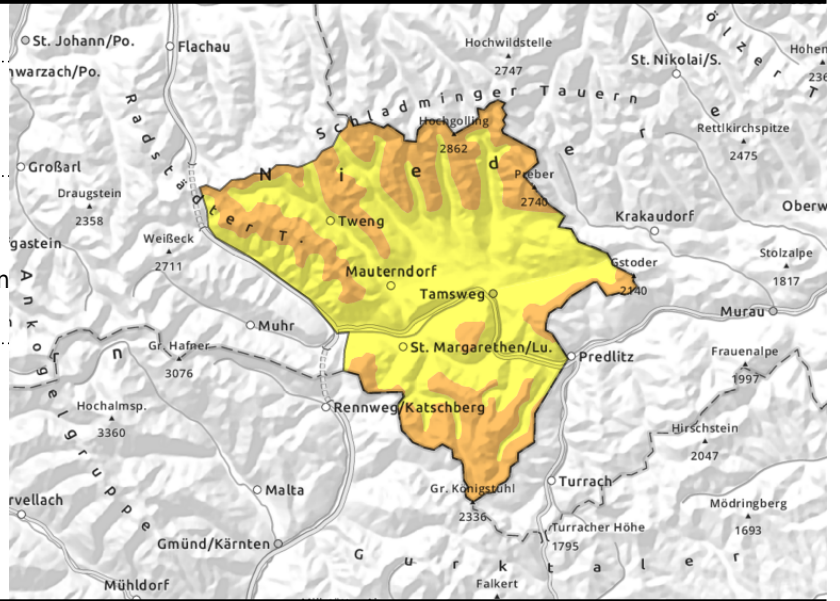
valid for: **Saturday, 02.12.2023**

Niedere Tauern Süd, Nockberge



near to and distant from ridgelines, behind protruberances in the terrain, in gullies and steep bowls

during the night wet-snow avalanches from wooded zones, during the day glide-snow avalanches on steep grassy slopes



Still intermittent rainfall during the night, snow transport by NW winds during the day

Danger above 1600m is CONSIDERABLE (3), below that altitude MODERATE. On extremely steep slopes at intermediate altitudes (hillsides, forest lanes, etc.), small-to-medium naturally triggered loose-snow avalanches are possible. At high altitudes, also slab avalanches can be triggered in steep terrain by one sole person and reach medium size. Danger zones are not easy to recognize, but occur in all aspects. For that reason, experience in assessing potential avalanche dangers is imperative in outlying terrain. As winds intensify, fresh trigger-sensitive snowdrifts will accumulate in the afternoon on E/S facing slopes.

Snowpack structure

The most recent snowfall has settled due to higher temperatures. It is at least moist up to 2200m, also due to sprinkling rainfall. Atop this as temperatures drop, heavy snowfall will now be deposited and bond well to the base. On the Main Tauern Ridge fresh snowdrifts have accumulated due to storm-strength southerly foehn winds, these will now be blanketed over by fresher snow. Intensifying W/NW winds will generate new snowdrifts over the course of the day which will be deposited on a loosely-packed and cold base: prone to triggering!

Weather

Friday night will bring intensive snowfall down to low lying areas. By Saturday morning, 20-50 cm is expected, amid ever colder temperatures and only little wind impact. On Saturday the snowfall will continue, visibility will often be severely reduced. By evening, another 10-20 cm will be added. Starting at midday, W/NW winds will begin to transport the snow. Temperatures will drop: at 2000 m from -6 to -12 degrees; at 3000m from -8 to -18 degrees. On Sunday, good visibility and sunshine, with possibility of some fog in the morning. The NW winds will slacken off significantly during the daytime. Slightly higher temperatures. At 2000 m from -15 to -10 degrees; at 3000m -17 degrees.

Outlook

A treacherous situation on Sunday. Backcountry tours make experience in assessing avalanche danger imperative. We advise great restraint. The first day of beautiful weather is frequently full of

Avalanche problems



Danger ratings



Expositions



accidents.

Translated by Jeffrey McCabe, www.creativtrans.com

Avalanche problems



Danger ratings



Expositions

