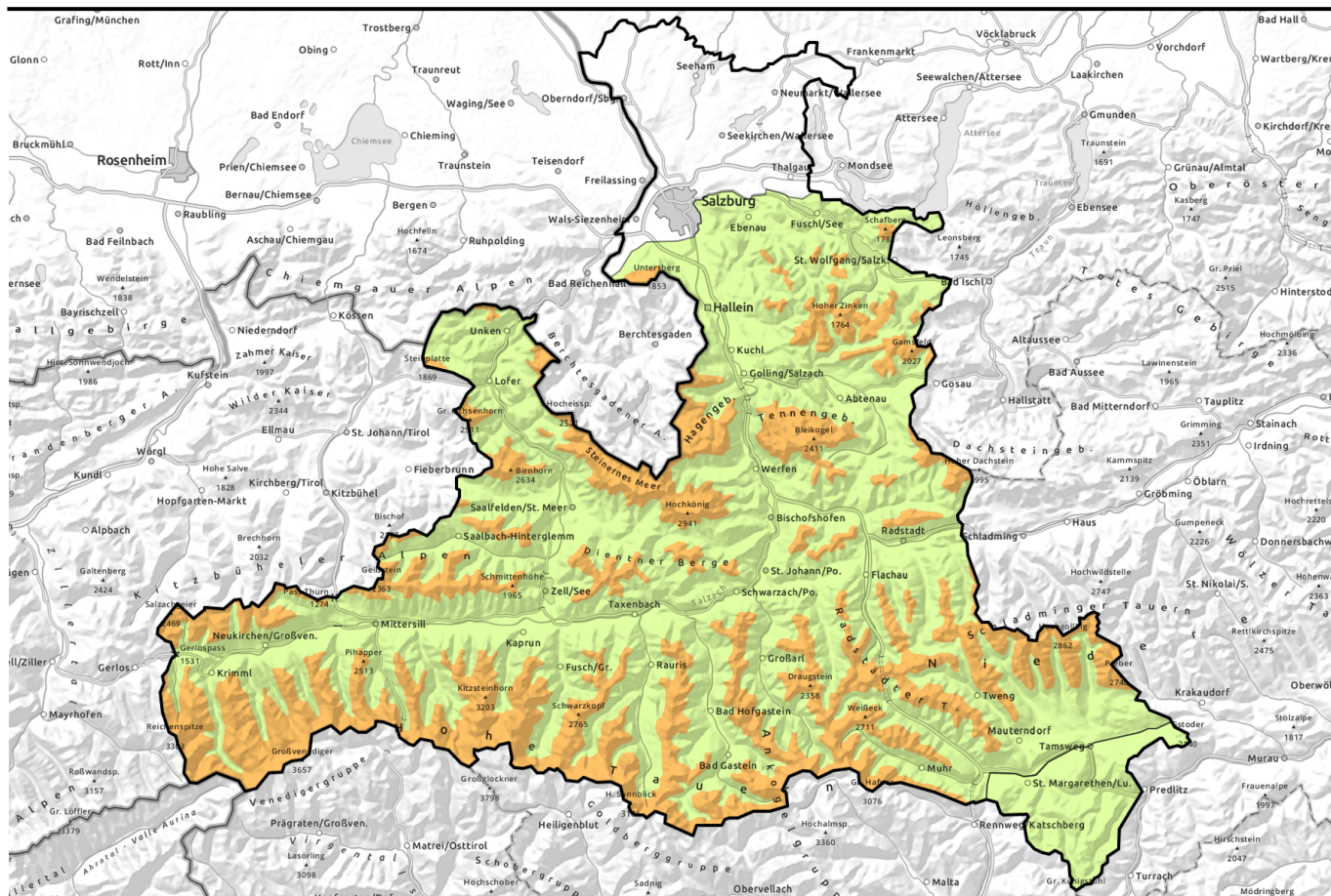


Avalanche report 25.11.2023 through 27.11.2023



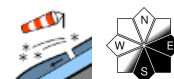
Fresh snow and storm-strength winds



Osterhorngruppe, Gamsfeldgruppe, Untersbergstock, Loferer und Leoganger Steinberge, Chiemgauer Alpen, Heutal, Reiteralpe, Steinernes Meer, Hochkönig, Hagengebirge, Göllstock, Tennengebirge, Gosaukamm, Niedere Tauern Nord, Pongauer Grasberge, Dientner Grasberge, Kitzbüheler Alpen, Glemmtal, Oberpinzgauer Grasberge, Großvenedigergruppe Nord, Großvenedigergruppe Alpenhauptkamm, Glocknergruppe Nord, Glocknergruppe Alpenhauptkamm, Goldberggruppe Nord, Goldberggruppe Alpenhauptkamm, Niedere Tauern Alpenhauptkamm, Ankogelgruppe, Muhr, Niedere Tauern Süd



Nockberge



Avalanche problems



Danger ratings

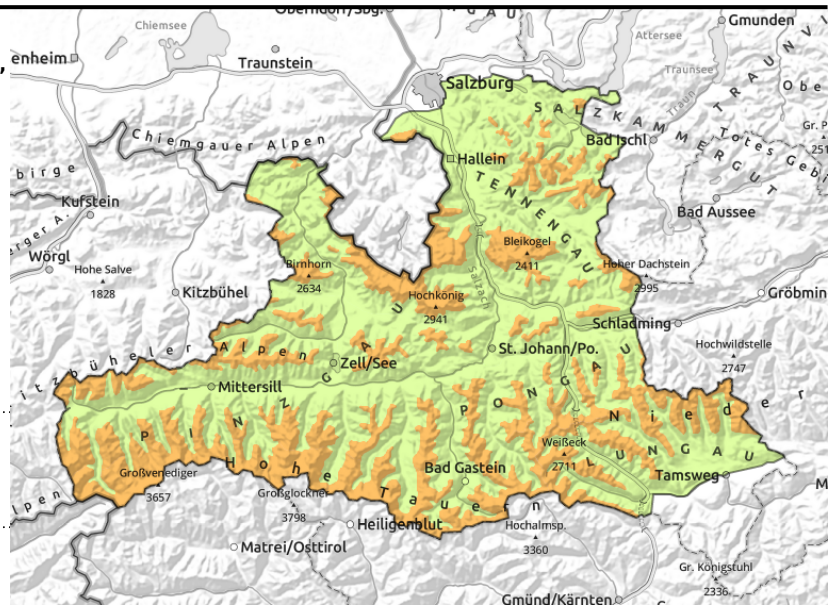


Expositions



Avalanche report 25.11.2023 through 27.11.2023

Osterhorngruppe, Gamsfeldgruppe, Untersbergstock, Loferer und Leoganger Steinberge, Chiemgauer Alpen, Heutal, Reiteralpe, Steinernes Meer, Hochkönig, Hagengebirge, Göllstock, Tennengebirge, Gosaukamm, Niedere Tauern Nord, Pongauer Grasberge, Dientner Grasberge, Kitzbüheler Alpen, Glemmtal, Oberpinzgauer Grasberge, Großvenedigergruppe Nord, Großvenedigergruppe Alpenhauptkamm, Glocknergruppe Nord, Glocknergruppe Alpenhauptkamm, Goldberggruppe Nord, Goldberggruppe Alpenhauptkamm, Niedere Tauern Alpenhauptkamm, Ankogelgruppe, Muhr, Niedere Tauern Süd



wide-ranging snowdrift accumulations distant from ridgelines, behind protruberances in the terrain, above the treeline, in gullies and steep bowls



from extremely steep grass-covered terrain

Avalanche prone locations due to trigger-sensitive snowdrift accumulations

Above the treeline, the danger of slab avalanches is CONSIDERABLE (level 3), below that altitude, danger is low. Avalanche prone locations occur particularly on NE-E-S facing steep slopes, behind protruberances in the terrain and in gullies, including zones distant from ridgelines as a result of wind impact. Even minimum additional loading is sufficient to trigger a small and medium-sized slab (that means one single person!). Poor visibility makes it more difficult to recognize danger zones. Below the timberline the danger stems from naturally triggered, mostly small-sized glide-snow avalanches, particularly on very steep grass-covered slopes which before Friday were bare of snow.

Snowpack structure

By Saturday morning, 20-30 cm of fresh snow is anticipated over widespread areas, up to 50 cm on Steinernes Meer and Hochkönig. Above 1500-1700 m there is a cohesive, area-wide old snowpack, frequently melt-freeze encrusted through warmth, rainfall (up to high alpine regions) and wind impact. Beneath these crusts are faceted crystals which as yet show no trigger-sensitivity (caveat: very few stability tests have been conducted). Potential fracture points for slab avalanches are to be expected inside the fresh snow. At lower altitudes the snow will fall mostly on bare ground.

Weather

Thick clouds and snow showers will reduce visibility severely on Saturday. The snowfall will slacken off later on, there will be occasional interims, later in the day the showers can increase again and continue through the night. Particularly at high altitudes, a stormy and very cold NW wind will be

Avalanche problems



Danger ratings



Expositions



Avalanche report **25.11.2023** through **27.11.2023**

blowing, on the ridgelines of the Tauern reaching 100 km/hr. At 2000 m, -12 degrees; at 3000 m, -19 degrees. By Sunday morning, 10-20 cm of fresh snow expected, as much as 30 cm in Hohe Tauern and Northern Alps.

On Sunday, heavy cloud will predominate above the summits, light snow showers will pass through, bringing only minor amounts of fresh snow. In the ridgeline terrain of the Tauern, the NW wind will continue to reach speeds of 100 km/hr. At 2000 m, -12 to -9 degrees; at 3000 m, -19 to -16 degrees. On Monday, variably cloudy skies above the summits with brief sunny intervals, the light often diffuse. There will be no precipitation. Winds will be light, along the Tauern the southerly foehn wind will reach 0-60 km/hr. Higher temperatures: at 2000 m, -6 degrees; at 3000 m, -12 degrees.

Outlook

The considerable danger of slab avalanches in some zones will persist at the beginning of the week. Additional avalanche prone locations also to be found on north-facing slopes along the Tauern due to southerly foehn wind impact.

Avalanche problems



Danger ratings

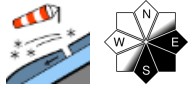


Expositions

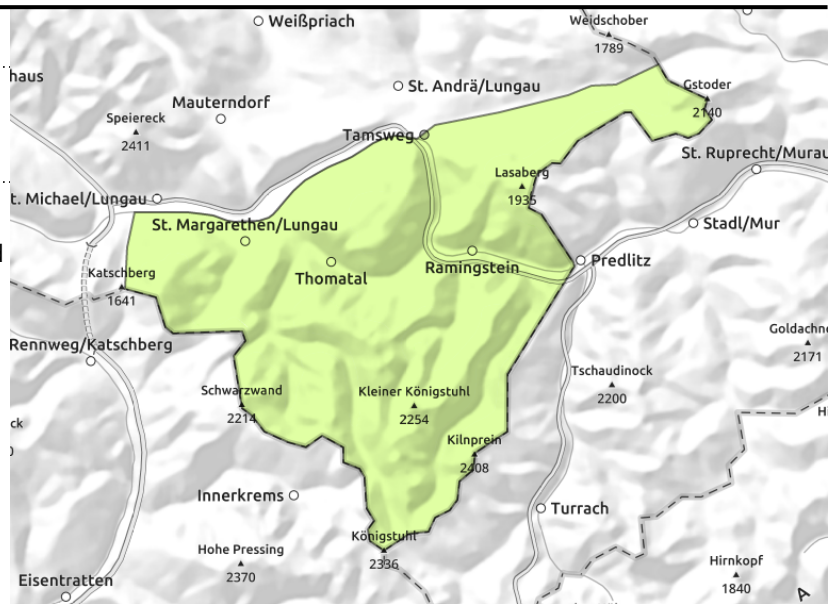


Avalanche report 25.11.2023 through 27.11.2023

Nockberge



near and far from ridgelines, in gullies and steep bowls, behind protruberances in the terrain



Small avalanche prone locations in freshly generated snowdrifts

The danger of avalanches is LOW (1). Isolated avalanche prone locations for dry-snow slab avalanches possible on east-facing and south-facing slopes, behind protruberances in the terrain and in gullies, also distant from ridgelines due to wind impact. Minimum additional loading is sufficient to trigger a small slab avalanche, i.e. one single person.

Snowpack structure

By Saturday morning, about 10 cm of fresh snow is anticipated. Above 1500 m there is a cohesive area-wide old snowpack frequently melt-freeze encrusted through warmth, rainfall and wind impact. Potential fracture points for slab avalanches are to be expected inside the fresh snow. At lower altitudes the snow will fall mostly on bare ground.

Weather

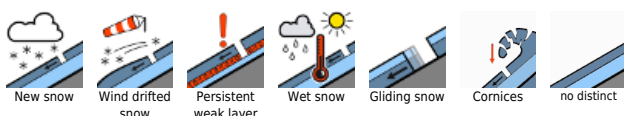
Thick clouds and snow showers will reduce visibility severely on Saturday. The snowfall will slacken off later on, there will be occasional interims, later in the day the showers can increase again and continue through the night. A stormy and very cold NW wind will be blowing, on the ridgelines reaching 60-80 km/hr. At 2000 m, -12 degrees. By Sunday morning, 5 cm of fresh snow expected. On Sunday, heavy cloud will predominate, but no precipitation. Still very windy: the NW winds will intensify, reach gusts of 60-80 km/hr. At 2000 m, -12 to -9 degrees. On Monday, variably cloudy skies above the summits with brief sunny intervals, the light often diffuse. There will be no precipitation. Winds will be no disturbance. Higher temperatures: at 2000 m, -6 degrees.

Outlook

No significant change in avalanche danger at the beginning of the week.

Translated by Jeffrey McCabe, www.creativtrans.com

Avalanche problems



Danger ratings



Expositions

