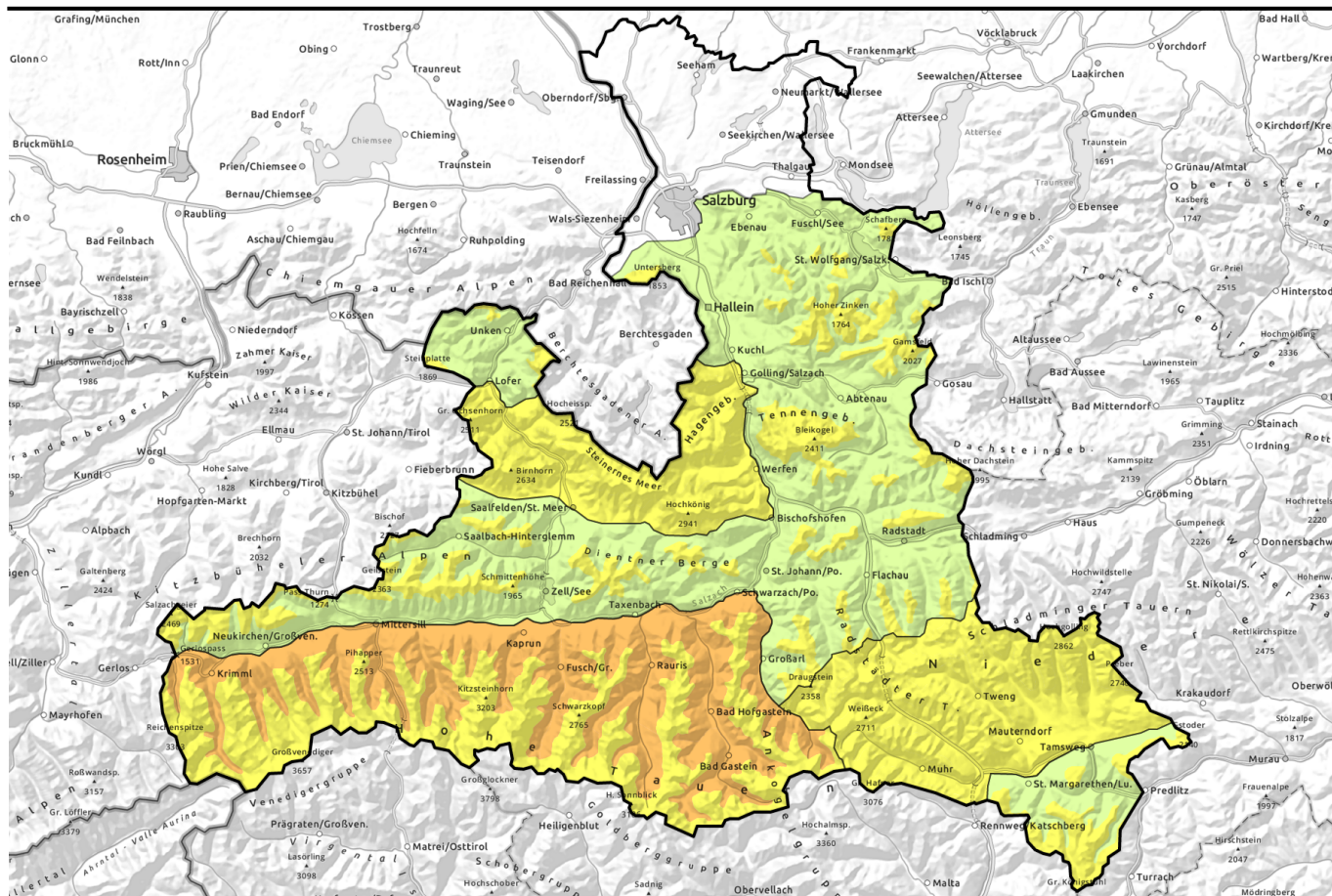


# Avalanche report for Monday, 01.05.2023



## Main danger: wet-snow and glide-snow avalanches. Final Avalanche Bulletin of the season.

	<p>2200 m Chiemgauer Alpen, Heutal, Reiteralpe, Osterhorngruppe, Gamsfeldgruppe, Untersbergstock, Tennengebirge, Gosaukamm, Kitzbüheler Alpen, Glemmtal, Oberpinzgauer Grasberge, Dientner Grasberge, Pongauer Grasberge, Niedere Tauern Nord, Nockberge</p>	
	<p>Loferer und Leoganger Steinberge, Niedere Tauern Alpenhauptkamm, Ankogelgruppe, Muhr, Niedere Tauern Süd, Steinernes Meer, Hochkönig, Hagengebirge, Gölzstock</p>	
	<p>2600 m Großvenedigergruppe Nord, Großvenedigergruppe Alpenhauptkamm, Glocknergruppe Alpenhauptkamm, Glocknergruppe Nord, Goldberggruppe Nord, Goldberggruppe Alpenhauptkamm</p>	

### Avalanche problems



### Danger ratings

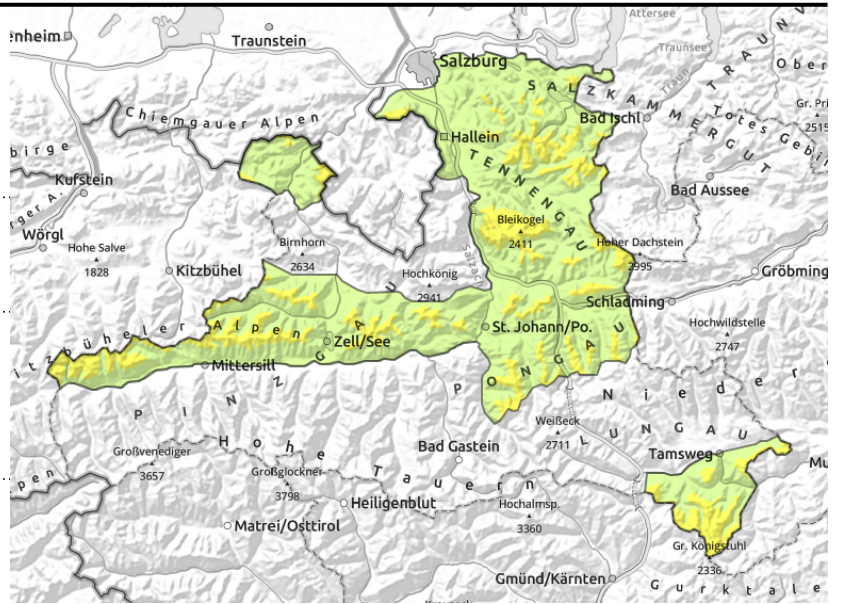


### Expositions



# Avalanche report for Monday, 01.05.2023

**Chiemgauer Alpen, Heutal, Reiteralpe, Osterhorngruppe, Gamsfeldgruppe, Untersbergstock, Tennengebirge, Gosaukamm, Kitzbüheler Alpen, Glemmtal, Oberpinzgauer Grasberge, Dientner Grasberge, Pongauer Grasberge, Niedere Tauern Nord, Nockberge**



warm temperatures and rain weaken the snowpack. naturally triggered wet-snow avalanches possible.



in extremely steep terrain (grassy-covered slopes, rock slabs)

## Wet loose-snow and glide-snow avalanches

Avalanche danger above 2200 m is MODERATE, below that altitude danger is LOW. Wet loose-snow avalanches and glide-snow avalanches can release naturally, most are small, medium in isolated cases. At high altitudes, esp. over 2200 m, danger levels are higher due to greater snow depths.

### Snowpack structure

Nocturnal outgoing longwave radiation is possible to a limited extent, a thin melt-freeze crust can form which will rapidly soften on Monday, thus forfeiting snowpack firmness further.

### Weather

On Sunday night, high-altitude clouds will pass through, more dense on the Main Tauern Ridge. On Monday, brisk-to-strong foehn wind will be blowing at high altitudes. Nockberge and Tauern will often be shrouded in clouds, a bit of rainfall is possible in the afternoon (snowfall above 2200 m). In the Northern Alps, sunshine due to foehn-dispersed clouds. At 2000 m: 3-6 degrees; at 3000 m: -2 degrees.

On Tuesday, gray skies, poor visibility, rainfall/snowfall. Fresh fallen snow at high altitudes.

### Outlook

Wet-snow and glide-snow avalanches remain the main danger. This is the final Avalanche Bulletin of the season. Further information will be supplied in our blog.

#### Avalanche problems



#### Danger ratings

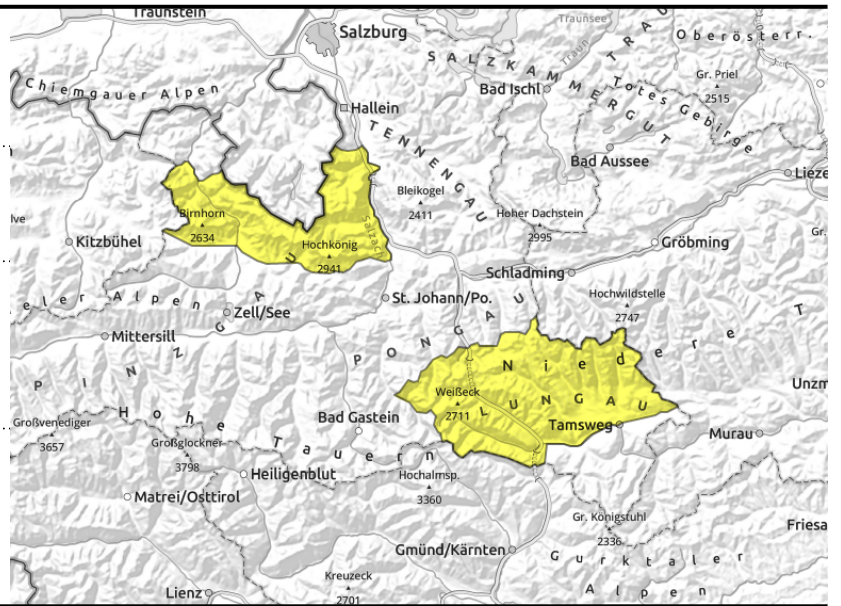


#### Expositions



# Avalanche report for Monday, 01.05.2023

**Loferer und Leoganger Steinberge, Niedere Tauern Alpenhauptkamm, Ankogelgruppe, Muhr, Niedere Tauern Süd, Steinernes Meer, Hochkönig, Hagengebirge, Göllstock**



warm temperatures and rain weaken the snowpack. naturally triggered wet-snow avalanches possible.



in extremely steep terrain (grassy-covered slopes, rock slabs)

## Wet loose-snow and glide-snow avalanches, minor snowdrift problem

Avalanche danger is MODERATE.

Wet loose-snow avalanches and glide-snow avalanches can release naturally below 2700 m due to high temperatures. Most releases are small, medium in isolated cases.

Above 2800 m, small snowdrifts have accumulated which can trigger by minimum additional loading.

### Snowpack structure

Nocturnal outgoing longwave radiation is possible to a limited extent, a thin melt-freeze crust can form which will rapidly soften on Monday, thus forfeiting snowpack firmness further.

### Weather

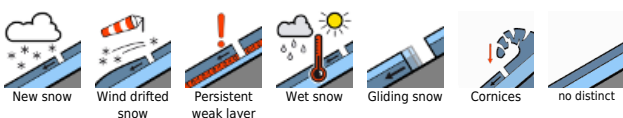
On Sunday night, high-altitude clouds will pass through, more dense on the Main Tauern Ridge. On Monday, brisk-to-strong foehn wind will be blowing at high altitudes. Nochberge and Tauern will often be shrouded in clouds, a bit of rainfall is possible in the afternoon (snowfall above 2200 m). In the Northern Alps, sunshine due to foehn-dispersed clouds. At 2000 m: 3-6 degrees; at 3000 m: -2 degrees.

On Tuesday, gray skies, poor visibility, rainfall/snowfall. Fresh fallen snow at high altitudes.

### Outlook

Wet-snow and glide-snow avalanches remain the main danger. This is the final Avalanche Bulletin of the season. Further information will be supplied in our blog.

#### Avalanche problems



#### Danger ratings

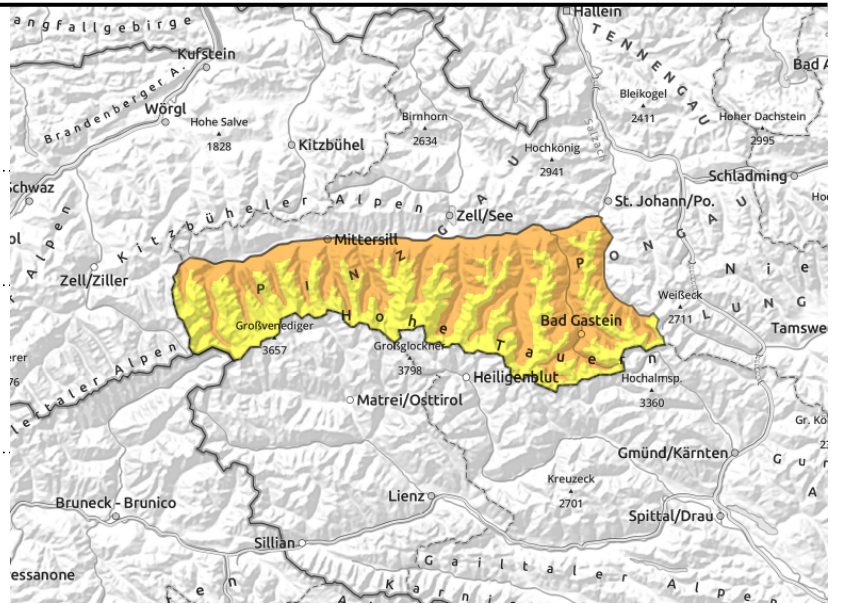


#### Expositions



# Avalanche report for Monday, 01.05.2023

**Großvenedigergruppe Nord, Großvenedigergruppe Alpenhauptkamm, Glocknergruppe Alpenhauptkamm, Glocknergruppe Nord, Goldberggruppe Nord, Goldberggruppe Alpenhauptkamm**



warm temperatures and rain weaken the snowpack. naturally triggered wet-snow avalanches possible.



in extremely steep and unstructured terrain, esp. on grass-covered slopes and rock slabs

## Below 2700 m, wet-snow and glide-snow avalanches, snowdrift problem at high altitude

Avalanche danger below 2700 m is CONSIDERABLE, above that altitude danger is MODERATE. Wet loose-snow avalanches and glide-snow avalanches can release naturally due to high temperatures and rain impact below 2700 m. Danger zones and likelihood of triggering increase with ascending altitude. Avalanches can fracture down to more deeply embedded layers and grow to larger size.

### Snowpack structure

Nocturnal outgoing longwave radiation is possible to a limited extent only, a thin melt-freeze crust cannot always form and if it does, rapidly softens the next morning, thus forfeiting snowpack firmness further. Snowdrifts in high alpine regions, esp. on north-facing slopes, require caution. On shady slopes above 2400 m there are expansively metamorphosed (faceted) layers in the snowpack which can trigger releases by large additional loading, e.g. from a small near-surface avalanches.

### Weather

On Sunday night, high-altitude clouds will pass through, more dense on the Main Tauern Ridge. On Monday, brisk-to-strong foehn wind will be blowing at high altitudes. Nochberge and Tauern will often be shrouded in clouds, a bit of rainfall is possible in the afternoon (snowfall above 2200 m). In the Northern Alps, sunshine due to foehn-dispersed clouds. At 2000 m: 3-6 degrees; at 3000 m: -2 degrees.

On Tuesday, gray skies, poor visibility, rainfall/snowfall. Fresh fallen snow (15-30 cm) at high altitudes.

### Outlook

Wet-snow and glide-snow avalanches remain the main danger. This is the final Avalanche Bulletin of the season. Further information will be supplied in our blog.

Translated by Jeffrey McCabe, [www.creativtrans.com](http://www.creativtrans.com)

#### Avalanche problems



#### Danger ratings



#### Expositions

