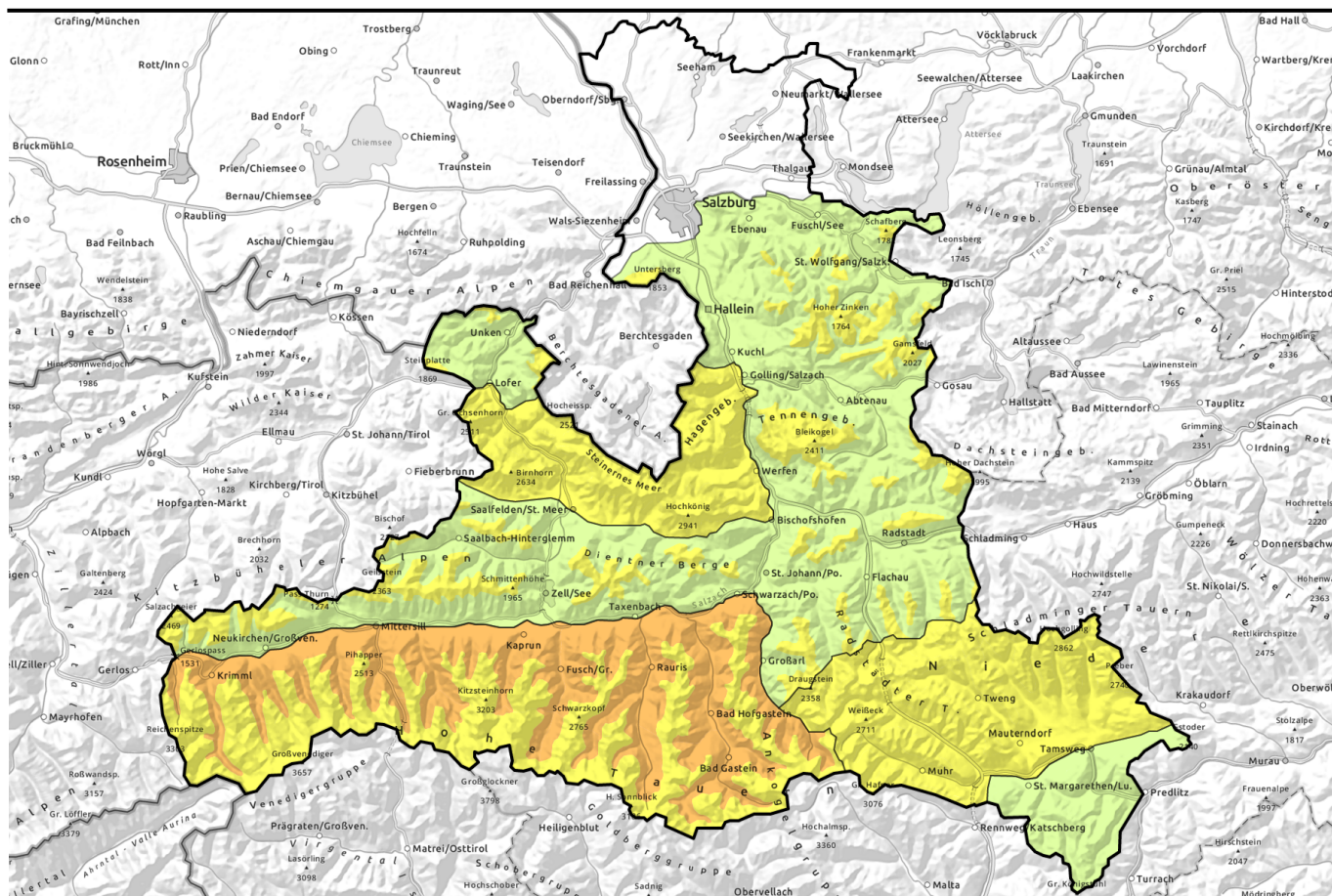


Avalanche report for Sunday, 30.04.2023



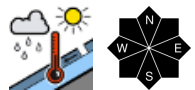
Danger of wet-snow and glide-snow avalanches. Snowdrift problem at high altitudes.

	2200 m	Chiemgauer Alpen, Heutal, Reiteralpe, Osterhorngruppe, Gamsfeldgruppe, Untersbergstock, Tennengebirge, Gosaukamm, Kitzbüheler Alpen, Glemmtal, Oberpinzgauer Grasberge, Dientner Grasberge, Pongauer Grasberge, Niedere Tauern Nord	
		Loferer und Leoganger Steinberge, Niedere Tauern Alpenhauptkamm, Ankogelgruppe, Muhr, Niedere Tauern Süd, Steinernes Meer, Hochkönig, Hagengebirge, Gölzstock	
	2600 m	Großvenedigergruppe Nord, Großvenedigergruppe Alpenhauptkamm, Glocknergruppe Alpenhauptkamm, Glocknergruppe Nord, Goldberggruppe Nord, Goldberggruppe Alpenhauptkamm	
		Nockberge	

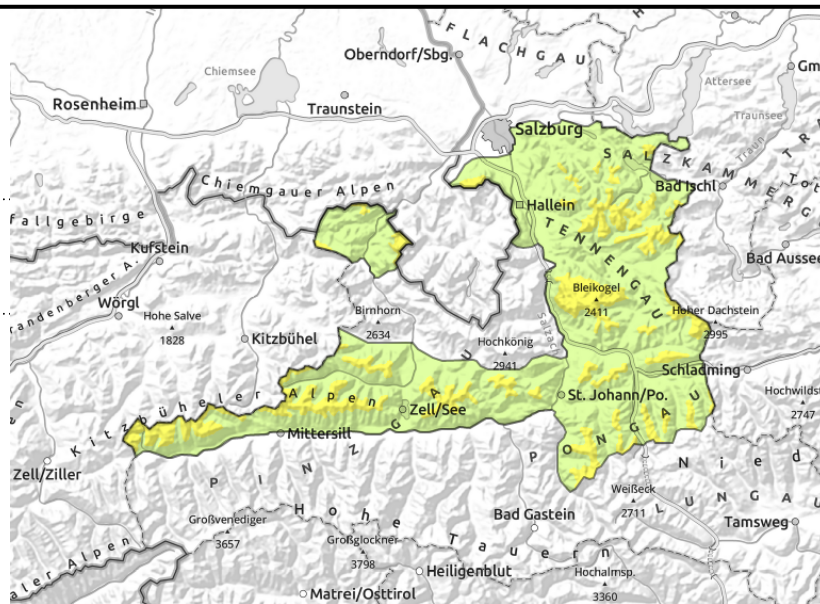
Avalanche problems	Danger ratings	Expositions

Avalanche report for Sunday, 30.04.2023

Chiemgauer Alpen, Heutal, Reiteralpe, Osterhorngruppe, Gamsfeldgruppe, Untersbergstock, Tennengebirge, Gosaukamm, Kitzbüheler Alpen, Glemmtal, Oberpinzgauer Grasberge, Dientner Grasberge, Pongauer Grasberge, Niedere Tauern Nord



warm temperatures and rain weaken the snowpack. naturally triggered wet-snow avalanches possible.



Wet-snow and glide-snow avalanches

Avalanche danger above 2200 m is MODERATE, below that altitude danger is LOW. Wet loose-snow avalanches and glide-snow avalanches can release naturally due to high temperatures and rain impact. Most releases are small, above 2200 m medium in isolated cases.

Snowpack structure

Overcast nighttime skies, hardly any outgoing radiation. Wet and soft snowpack right from early morning.

Weather

Variable weather conditions on Sunday, convective cloud build-up, sunshine and a few rain showers in the afternoon. Winds mostly light to moderate. At 2000 m: 1-5 degrees. Light to moderate NE winds.

Outlook

Little change expected

Avalanche problems



Danger ratings

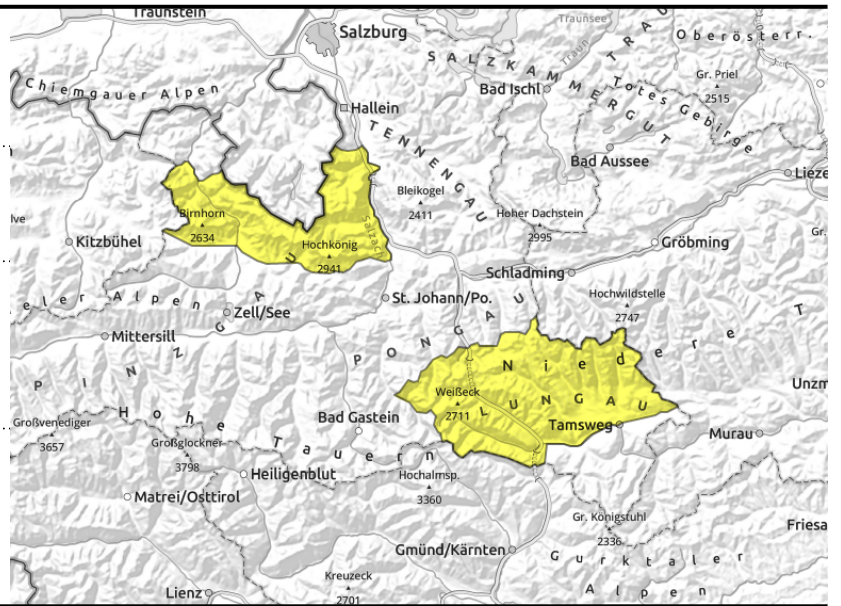


Expositions



Avalanche report for **Sunday, 30.04.2023**

Loferer und Leoganger Steinberge, Niedere Tauern Alpenhauptkamm, Ankogelgruppe, Muhr, Niedere Tauern Süd, Steinernes Meer, Hochkönig, Hagengebirge, Göllstock



warm temperatures and rain weaken the snowpack. naturally triggered wet-snow avalanches possible.



avoid small snowdrift patches in tricky terrain

Wet-snow and glide-snow avalanches, snowdrift problem at high altitudes

Avalanche danger is MODERATE.

Wet loose-snow avalanches and glide-snow avalanches can release naturally due to high temperatures and rain impact. Most releases are small, above 2200 m medium in isolated cases. Above 2800 m, small snowdrifts have accumulated which can trigger by minimum additional loading, mostly small.

Snowpack structure

Overcast nighttime skies, hardly any outgoing radiation. Wet and soft snowpack right from early morning.

Weather

Variable weather conditions on Sunday, convective cloud build-up, sunshine and a few rain showers in the afternoon. Winds mostly light to moderate. At 2000 m: 1-5 degrees; at 3000 m: -3 degrees. Light to moderate NE winds.

Outlook

Little change expected

Avalanche problems



Danger ratings

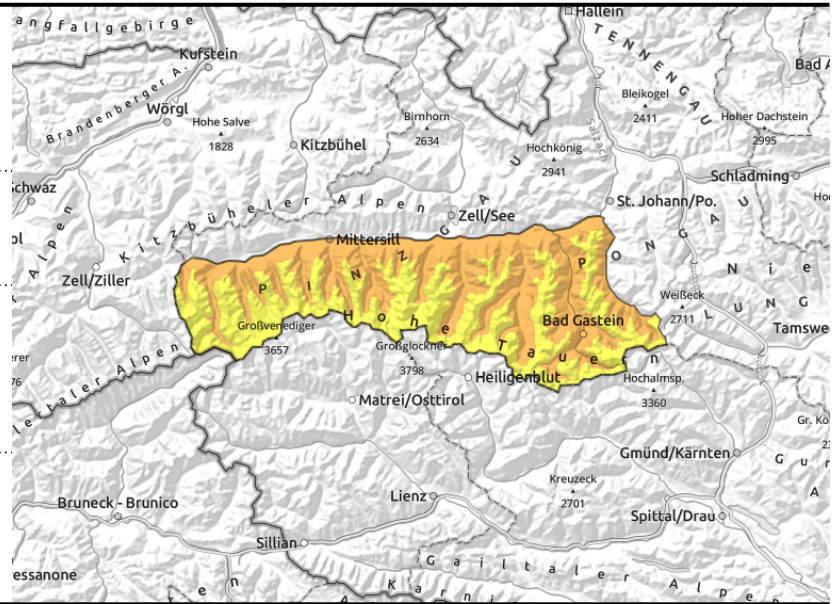


Expositions



Avalanche report for Sunday, 30.04.2023

Großvenedigergruppe Nord, Großvenedigergruppe Alpenhauptkamm, Glocknergruppe Alpenhauptkamm, Glocknergruppe Nord, Goldberggruppe Nord, Goldberggruppe Alpenhauptkamm



warm temperatures and rain weaken the snowpack. naturally triggered wet-snow avalanches possible.



snowdrifts prone to triggering esp. on steep north-facing slopes

Below 2600 m, wet-snow and glide-snow avalanches, snowdrift problem at high altitude

Avalanche danger below 2600 m is CONSIDERABLE, above that altitude danger is MODERATE. Wet loose-snow avalanches and glide-snow avalanches can release naturally due to high temperatures and rain impact below 2600 m. Danger zones and likelihood of triggering increase with ascending altitude. Avalanches can fracture down to more deeply embedded layers and grow to larger size. Above 2800 m, snowdrift accumulations are triggerable by minimum additional loading and attain medium size. Danger zones and likelihood of triggering increase with ascending altitude. Avalanches can fracture down to more deeply embedded layers in the snowpack, then grow to larger size.

Snowpack structure

Overcast nighttime skies, hardly any outgoing radiation. Wet and soft snowpack right from early morning. Snowdrift accumulations on NE facing slopes are still prone to triggering. Due to higher temperatures, bonding to the layer beneath them will quickly get better. On shady slopes above 2400 m, isolated expansively metamorphosed (faceted) layers are evident in the old snowpack.

Weather

Variable weather conditions on Sunday, convective cloud build-up, sunshine and a few rain showers in the afternoon. Winds mostly light to moderate. At 2000 m: 1-5 degrees; at 3000 m: -3 degrees. Light to moderate NE winds.

Outlook

Little change expected

Avalanche problems



Danger ratings



Expositions

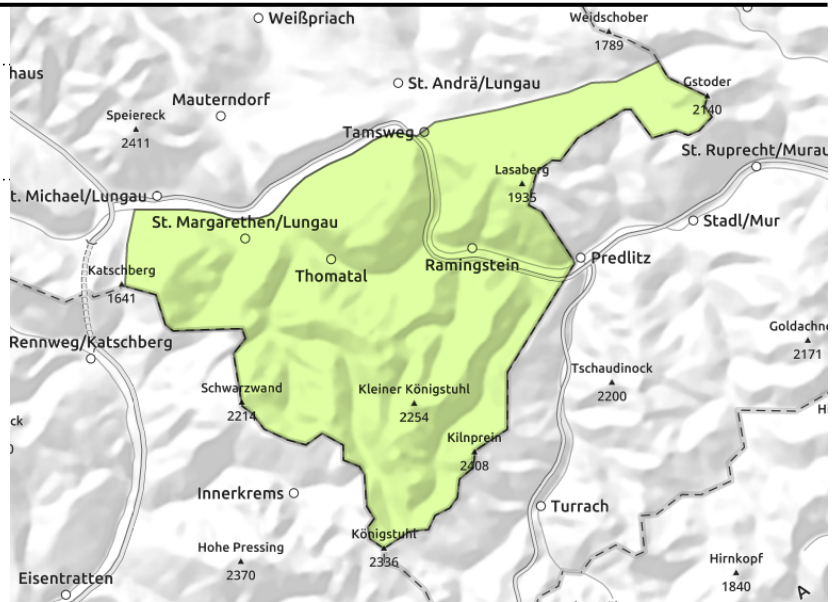


Avalanche report for **Sunday, 30.04.2023**

Nockberge



isolated wet loose-snow
avalanches possible



Low avalanche danger

Avalanche danger is LOW.

Due to higher daytime temperatures and some rainfall in the afternoon, isolated small wet loose-snow avalanches are possible on extremely steep ($>40^\circ$) slopes.

Snowpack structure

Overcast nighttime skies, hardly any outgoing radiation. Wet and soft snowpack right from early morning.

Weather

Scattered clouds on Sunday in the Nockberge, mostly sunny, convective cloud build-up, sunshine and a few rain showers in the afternoon. Winds mostly light to moderate. At 2000 m: 7 degrees. Light to moderate NE winds.

Outlook

Little change expected

Translated by Jeffrey McCabe, www.creativtrans.com

Avalanche problems



Danger ratings



Expositions

