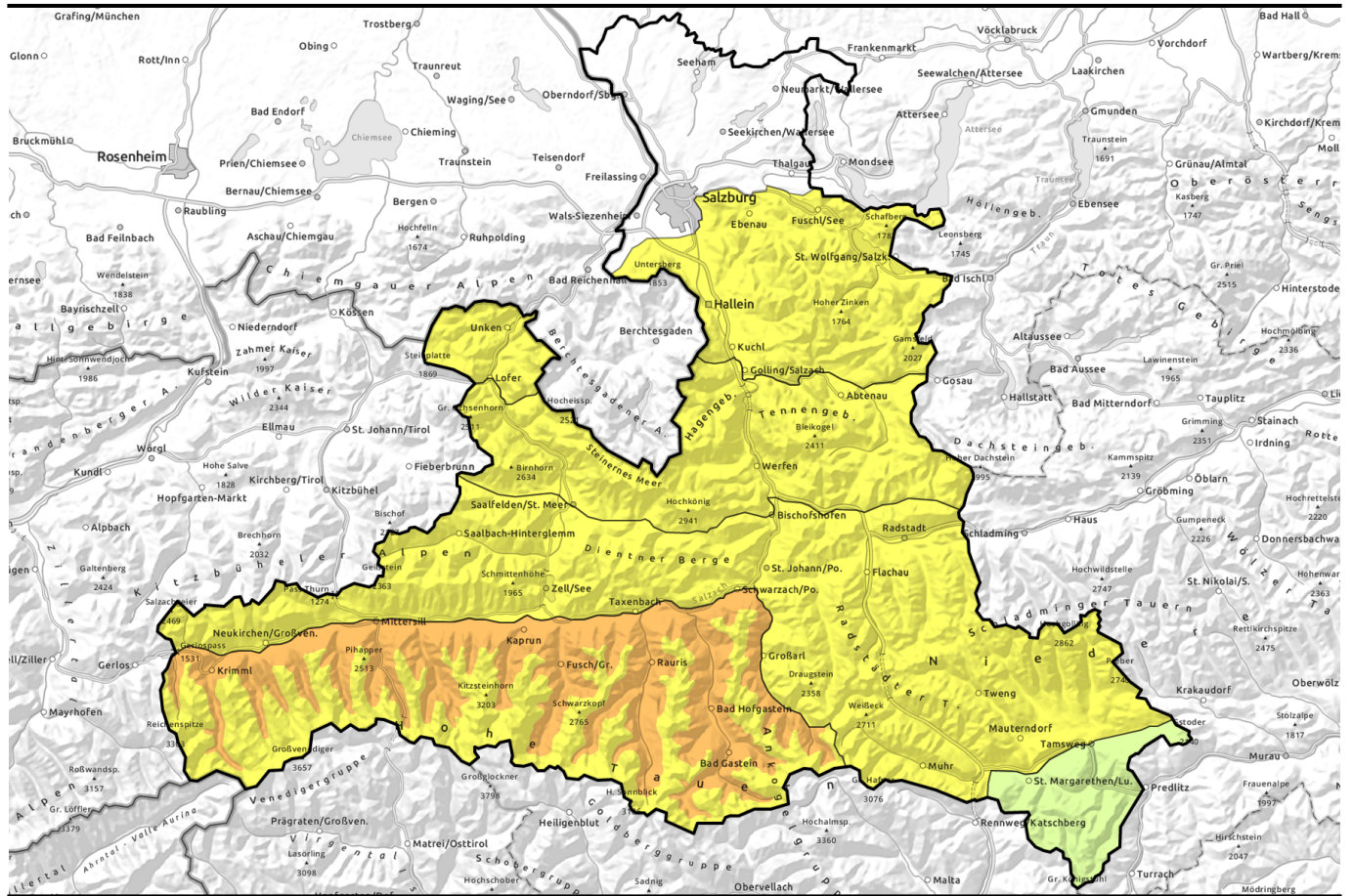


Rainfall up to high altitudes, increase of wet-snow and glide-snow avalanche danger in the afternoon

	<p>2400 m Großvenedigergruppe Nord, Großvenedigergruppe Alpenhauptkamm, Glocknergruppe Nord, Glocknergruppe Alpenhauptkamm, Goldberggruppe Nord, Goldberggruppe Alpenhauptkamm</p>	
	<p>2600 m Loferer und Leoganger Steinberge, Tennengebirge, Gosaukamm, Steinernes Meer, Hochkönig, Hagengebirge, Göllstock</p>	
	<p>Niedere Tauern Süd, Ankogelgruppe, Muhr, Niedere Tauern Alpenhauptkamm, Niedere Tauern Nord, Pongauer Grasberge, Dientner Grasberge, Kitzbüheler Alpen, Glemmtal, Oberpinzgauer Grasberge, Chiemgauer Alpen, Heutal, Reiteralpe, Osterhorngruppe, Gamsfeldgruppe, Untersbergstock</p>	
	<p>Nockberge</p>	

<p>Avalanche problems</p>	<p>Danger ratings</p>	<p>Expositions</p>



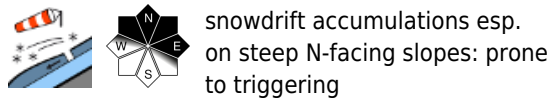
Regen bis in hohe Lagen: Anstieg der Gefahr von Nass- und Gletschneelawinen am Nachmittag

	<p>Großvenedigergruppe Nord, Großvenedigergruppe Alpenhauptkamm, Glocknergruppe Nord, Glocknergruppe Alpenhauptkamm, Goldberggruppe Nord, Goldberggruppe Alpenhauptkamm</p>	
<p>2400 m</p>		
	<p>Loferer und Leoganger Steinberge, Tennengebirge, Gosaukamm, Steinernes Meer, Hochkönig, Hagengebirge, Göllstock</p>	
	<p>Niedere Tauern Süd, Ankogelgruppe, Muhr, Niedere Tauern Alpenhauptkamm, Niedere Tauern Nord, Pongauer Grasberge, Dientner Grasberge, Kitzbüheler Alpen, Glemmtal, Oberpinzgauer Grasberge, Chiemgauer Alpen, Heutal, Reiteralpe, Osterhorngruppe, Gamsfeldgruppe, Untersbergstock</p>	
	<p>Nockberge</p>	

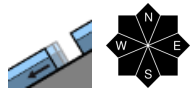
<p>Avalanche problems</p>	<p>Danger ratings</p>	<p>Expositions</p>
----------------------------------	------------------------------	---------------------------

Avalanche report for Friday, 28.04.2023, morning

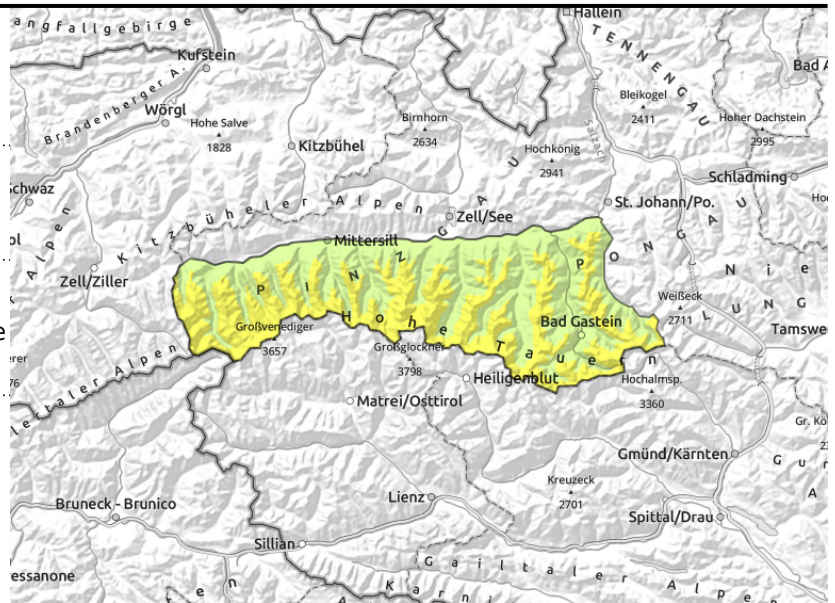
Großvenedigergruppe Nord, Großvenedigergruppe Alpenhauptkamm, Glocknergruppe Nord, Glocknergruppe Alpenhauptkamm, Goldberggruppe Nord, Goldberggruppe Alpenhauptkamm



snowdrift accumulations esp. on steep N-facing slopes: prone to triggering



caution urged on slopes with glide cracks



Snowdrift problem at high altitude. Glide-snow avalanches during course of day.

Avalanche danger above 2400 m is MODERATE in the morning, below that altitude danger is LOW. As a result of higher temperatures and rainfall, avalanche danger below 2400 m will rise to CONSIDERABLE in the afternoon.

Morning: the older snowdrift accumulations can in isolated cases be triggered by one sole skier above 2600 m, avalanche releases mostly medium, isolated large-sized releases when deeper layers are swept away. On steep grassy slopes below 2600 m, isolated naturally triggered glide-snow avalanches are possible.

Afternoon: due to higher temperatures, moist air masses and rainfall, small-to-medium sized naturally triggered wet-snow and glide-snow avalanches are possible below the snowfall level. Isolated avalanches on shady slopes can grow to large size.

Uncertain forecast: The uncertainties with regard to tomorrow's precipitation loom large. Amounts of precipitation and snowfall level will be determined largely by the development during the afternoon, which necessitates close observation.

Snowpack structure

During the night of partly clear skies, a thin melt-freeze crust will form then rapidly soften during the day. Higher daytime temperatures and moist air masses will lead to a further softening of the snowpack. In the afternoon, rainfall below 2200-2500 m will moisten and weaken the snowpack. At higher altitudes, 20-40 cm of fresh snow is possible. Winds will be light to moderate. Snowdrift accumulations from the last few days have consolidated well for the most part, are adequately bonded with the layers beneath them, only on shady slopes at high altitudes are they still prone to triggering. On shady slopes, isolated faceted layers are evident inside the old snowpack.

Weather

On Friday, initially dry with scattered clouds and some sunshine. Later, clouds will move in, visibility deteriorate. In late morning, rainfall and snowfall will spread, the snowfall level in the afternoon will lie at 2200-2500 m. Westerly winds will be light to moderate, but gradually intensify in the high alpine regions. At 2000 m: 2-4 degrees; at 3000 m: -2 degrees.

Avalanche problems



Danger ratings



Expositions



Outlook

Slight decrease in danger of wet-snow and glide-snow avalanches, these remain the main problem.

Avalanche problems



Danger ratings





Expositions





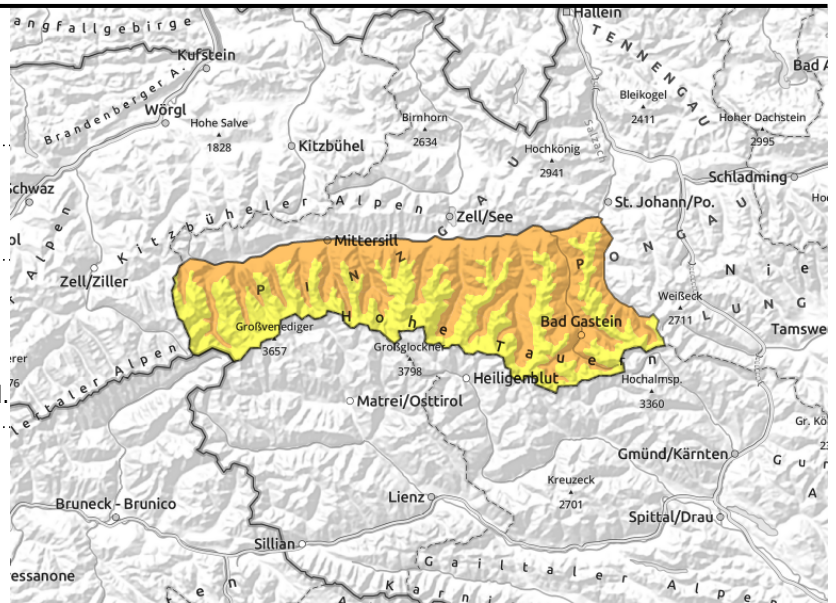
Avalanche report for Friday, 28.04.2023, afternoon

Großvenedigergruppe Nord, Großvenedigergruppe Alpenhauptkamm, Glocknergruppe Nord, Glocknergruppe Alpenhauptkamm, Goldberggruppe Nord, Goldberggruppe Alpenhauptkamm



  higher temperatures and rainfall weakening the snowpack. Naturally triggered wet-snow avalanches expected.

  naturally triggered glide-snow avalanches. caution urged in zones of glide-snow cracks



Snowdrift problem at high altitude. Glide-snow avalanches during course of day.

Avalanche danger above 2400 m is MODERATE in the morning, below that altitude danger is LOW. As a result of higher temperatures and rainfall, avalanche danger below 2400 m will rise to CONSIDERABLE in the afternoon.

Morning: the older snowdrift accumulations can in isolated cases be triggered by one sole skier above 2600 m, avalanche releases mostly medium, isolated large-sized releases when deeper layers are swept away. On steep grassy slopes below 2600 m, isolated naturally triggered glide-snow avalanches are possible.

Afternoon: due to higher temperatures, moist air masses and rainfall, small-to-medium sized naturally triggered wet-snow and glide-snow avalanches are possible below the snowfall level. Isolated avalanches on shady slopes can grow to large size.

Uncertain forecast: The uncertainties with regard to tomorrow's precipitation loom large. Amounts of precipitation and snowfall level will be determined largely by the development during the afternoon, which necessitates close observation.

Snowpack structure

During the night of partly clear skies, a thin melt-freeze crust will form then rapidly soften during the day. Higher daytime temperatures and moist air masses will lead to a further softening of the snowpack. In the afternoon, rainfall below 2200-2500 m will moisten and weaken the snowpack. At higher altitudes, 20-40 cm of fresh snow is possible. Winds will be light to moderate. Snowdrift accumulations from the last few days have consolidated well for the most part, are adequately bonded with the layers beneath them, only on shady slopes at high altitudes are they still prone to triggering. On shady slopes, isolated faceted layers are evident inside the old snowpack.

Weather

On Friday, initially dry with scattered clouds and some sunshine. Later, clouds will move in, visibility deteriorate. In late morning, rainfall and snowfall will spread, the snowfall level in the afternoon will lie at 2200-2500 m. Westerly winds will be light to moderate, but gradually intensify in the high alpine regions. At 2000 m: 2-4 degrees; at 3000 m: -2 degrees.

Avalanche problems



Danger ratings



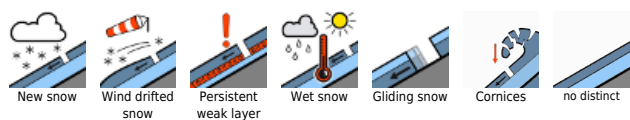
Expositions



Outlook

Slight decrease in danger of wet-snow and glide-snow avalanches, these remain the main problem.

Avalanche problems



Danger ratings

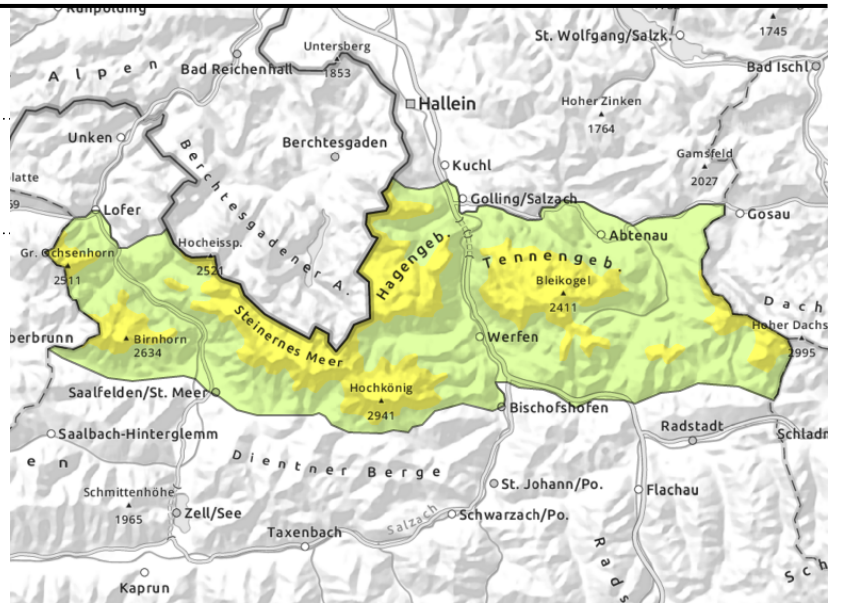
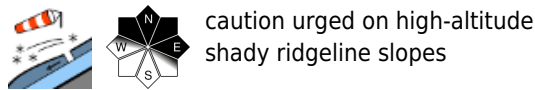


Expositions



Avalanche report for Friday, 28.04.2023, morning

Loferer und Leoganger Steinberge, Tennengebirge, Gosaukamm, Steinernes Meer, Hochkönig, Hagengebirge, Göllstock



Snowdrift problem at high altitude. Glide-snow avalanches during the afternoon.

Avalanche danger in the morning is LOW, rises to MODERATE in the afternoon.

Morning: the older snowdrift accumulations can in isolated cases be triggered by one sole skier on very steep (>35°) shady slopes, avalanche releases mostly medium, isolated large-sized releases when deeper layers are swept away.

Afternoon: due to higher temperatures, moist air masses and rainfall, small-to-medium sized naturally triggered wet-snow and glide-snow avalanches are possible below the snowfall level. Isolated avalanches on shady slopes can grow to large size.

Snowpack structure

During the night of partly clear skies, a thin melt-freeze crust will form then rapidly soften during the day. Higher daytime temperatures and moist air masses will lead to a further softening of the snowpack. In the afternoon, rainfall below 2200-2500 m will moisten and weaken the snowpack. At higher altitudes, 20-40 cm of fresh snow is possible. Winds will be light to moderate. Snowdrift accumulations from the last few days have consolidated well for the most part, are adequately bonded with the layers beneath them, only on shady slopes at high altitudes are they still prone to triggering. On shady slopes, isolated faceted layers are evident inside the old snowpack.

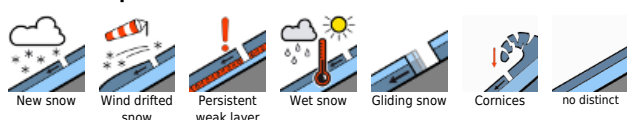
Weather

On Friday, initially dry with scattered clouds and some sunshine. Later, clouds will move in, visibility deteriorate. In late morning, rainfall and snowfall will spread, the snowfall level in the afternoon will lie at 2200-2500 m. Westerly winds will be light to moderate, but gradually intensify in the high alpine regions. At 2000 m: 2-4 degrees; at 3000 m: -2 degrees.

Outlook

Wet snow remains the main problem.

Avalanche problems



Danger ratings

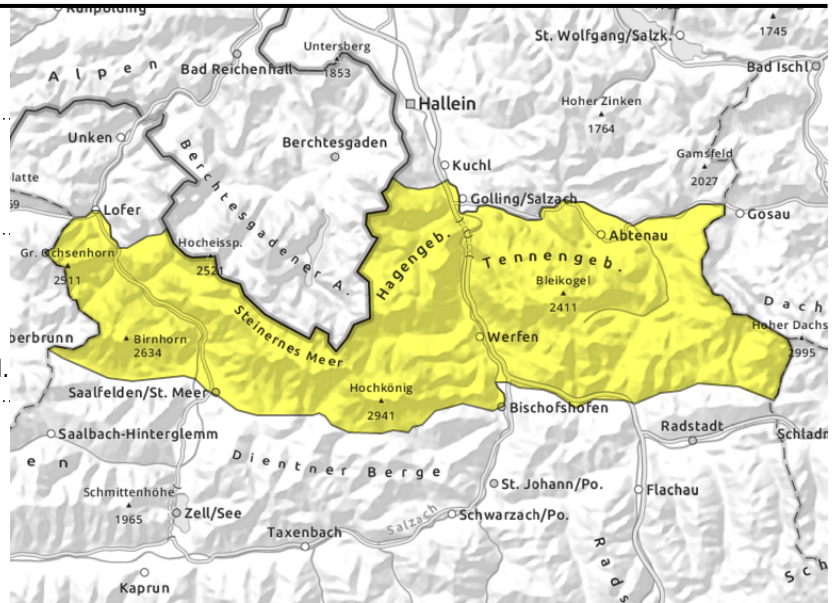


Expositions



Avalanche report for Friday, 28.04.2023, afternoon

Loferer und Leoganger Steinberge, Tennengebirge, Gosaukamm, Steinernes Meer, Hochkönig, Hagengebirge, Göllstock



higher temperatures and rainfall weakening the snowpack. Naturally triggered wet-snow avalanches expected.



caution urged on high-altitude shady ridgeline slopes

Snowdrift problem at high altitude. Glide-snow avalanches during the afternoon.

Avalanche danger in the morning is LOW, rises to MODERATE in the afternoon.

Morning: the older snowdrift accumulations can in isolated cases be triggered by one sole skier on very steep ($>35^\circ$) shady slopes, avalanche releases mostly medium, isolated large-sized releases when deeper layers are swept away.

Afternoon: due to higher temperatures, moist air masses and rainfall, small-to-medium sized naturally triggered wet-snow and glide-snow avalanches are possible below the snowfall level. Isolated avalanches on shady slopes can grow to large size.

Snowpack structure

During the night of partly clear skies, a thin melt-freeze crust will form then rapidly soften during the day. Higher daytime temperatures and moist air masses will lead to a further softening of the snowpack. In the afternoon, rainfall below 2200-2500 m will moisten and weaken the snowpack. At higher altitudes, 20-40 cm of fresh snow is possible. Winds will be light to moderate. Snowdrift accumulations from the last few days have consolidated well for the most part, are adequately bonded with the layers beneath them, only on shady slopes at high altitudes are they still prone to triggering. On shady slopes, isolated faceted layers are evident inside the old snowpack.

Weather

On Friday, initially dry with scattered clouds and some sunshine. Later, clouds will move in, visibility deteriorate. In late morning, rainfall and snowfall will spread, the snowfall level in the afternoon will lie at 2200-2500 m. Westerly winds will be light to moderate, but gradually intensify in the high alpine regions. At 2000 m: 2-4 degrees; at 3000 m: -2 degrees.

Outlook

Wet snow remains the main problem.

Avalanche problems



Danger ratings

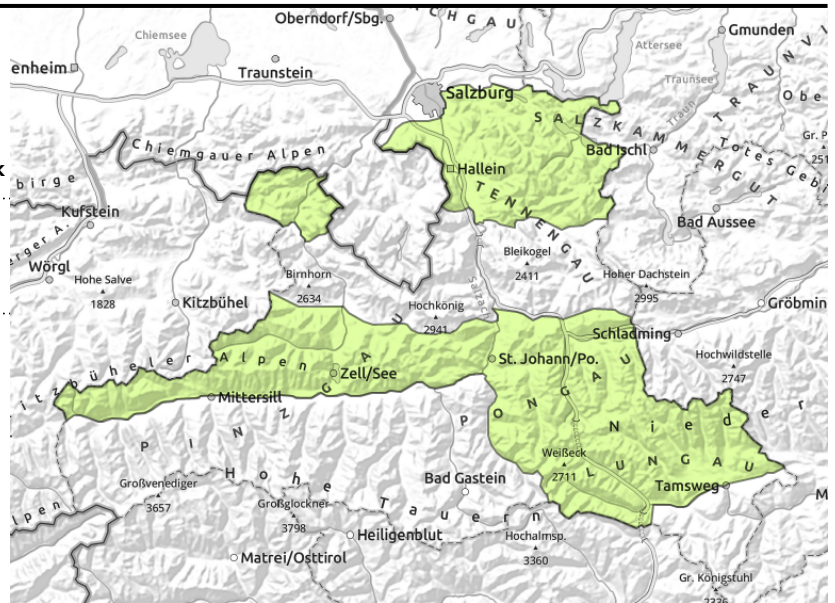


Expositions



Avalanche report for Friday, 28.04.2023, morning

Niedere Tauern Süd, Ankogelgruppe, Muhr, Niedere Tauern Alpenhauptkamm, Niedere Tauern Nord, Pongauer Grasberge, Dientner Grasberge, Kitzbüheler Alpen, Glemmtal, Oberpinzgauer Grasberge, Chiemgauer Alpen, Heutal, Reiteralpe, Osterhorngruppe, Gamsfeldgruppe, Untersbergstock



AVOID small snowdrift patches in tricky terrain

Increasing avalanche danger during the course of the day

Avalanche danger in the morning is LOW, rises to MODERATE in the afternoon.

Morning: the older snowdrift accumulations can in isolated cases be triggered by one sole skier on very steep (>40°) shady slopes, avalanche releases mostly medium, isolated large-sized releases when deeper layers are swept away. Caution urged in tricky terrain.

Afternoon: due to higher temperatures, moist air masses and rainfall, small-to-medium sized naturally triggered wet-snow and glide-snow avalanches are possible below the snowfall level.

Snowpack structure

During the night of partly clear skies, a thin melt-freeze crust will form then rapidly soften during the day. Higher daytime temperatures and moist air masses will lead to a further softening of the snowpack. In the afternoon, rainfall below 2200-2500 m will moisten and weaken the snowpack. At higher altitudes, 20-40 cm of fresh snow is possible. Winds will be light to moderate. Snowdrift accumulations from the last few days have consolidated well for the most part, are adequately bonded with the layers beneath them, only on shady slopes at high altitudes are they still prone to triggering. On shady slopes, isolated faceted layers are evident inside the old snowpack.

Weather

On Friday, initially dry with scattered clouds and some sunshine. Later, clouds will move in, visibility deteriorate. In late morning, rainfall and snowfall will spread, the snowfall level in the afternoon will lie at 2200-2500 m. Westerly winds will be light to moderate, but gradually intensify in the high alpine regions. At 2000 m: 2-4 degrees; at 3000 m: -2 degrees.

Outlook

Wet snow remains the main problem.

Avalanche problems



Danger ratings

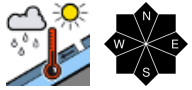
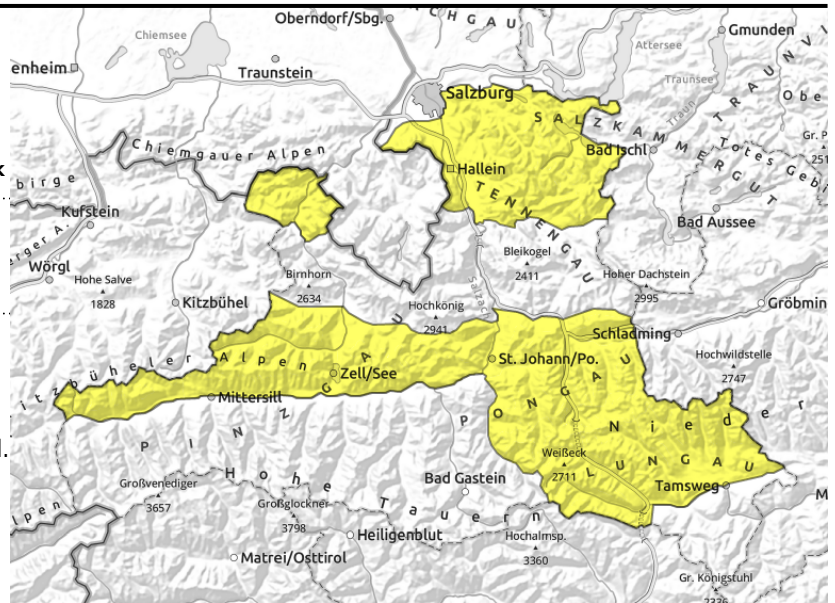


Expositions



Avalanche report for Friday, 28.04.2023, afternoon

Niedere Tauern Süd, Ankogelgruppe, Muhr, Niedere Tauern Alpenhauptkamm, Niedere Tauern Nord, Pongauer Grasberge, Dientner Grasberge, Kitzbüheler Alpen, Glemmtal, Oberpinzgauer Grasberge, Chiemgauer Alpen, Heutal, Reiteralpe, Osterhorngruppe, Gamsfeldgruppe, Untersbergstock



higher temperatures and rainfall weakening the snowpack. Naturally triggered wet-snow avalanches expected.

Increasing avalanche danger during the course of the day

Avalanche danger in the morning is LOW, rises to MODERATE in the afternoon.

Morning: the older snowdrift accumulations can in isolated cases be triggered by one sole skier on very steep (>40°) shady slopes, avalanche releases mostly medium, isolated large-sized releases when deeper layers are swept away. Caution urged in tricky terrain.

Afternoon: due to higher temperatures, moist air masses and rainfall, small-to-medium sized naturally triggered wet-snow and glide-snow avalanches are possible below the snowfall level.

Snowpack structure

During the night of partly clear skies, a thin melt-freeze crust will form then rapidly soften during the day. Higher daytime temperatures and moist air masses will lead to a further softening of the snowpack. In the afternoon, rainfall below 2200-2500 m will moisten and weaken the snowpack. At higher altitudes, 20-40 cm of fresh snow is possible. Winds will be light to moderate. Snowdrift accumulations from the last few days have consolidated well for the most part, are adequately bonded with the layers beneath them, only on shady slopes at high altitudes are they still prone to triggering. On shady slopes, isolated faceted layers are evident inside the old snowpack.

Weather

On Friday, initially dry with scattered clouds and some sunshine. Later, clouds will move in, visibility deteriorate. In late morning, rainfall and snowfall will spread, the snowfall level in the afternoon will lie at 2200-2500 m. Westerly winds will be light to moderate, but gradually intensify in the high alpine regions. At 2000 m: 2-4 degrees; at 3000 m: -2 degrees.

Outlook

Wet snow remains the main problem.

Avalanche problems



Danger ratings



Expositions

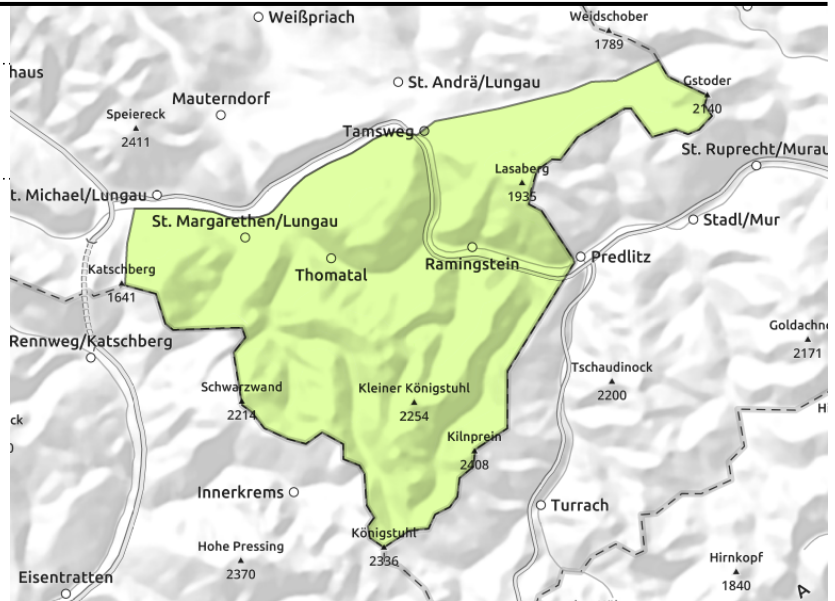


Avalanche report for Friday, 28.04.2023

Nockberge



isolated wet loose-snow avalanches possible



Low avalanche danger

Due to higher daytime temperatures and some rainfall in the afternoon, isolated small wet loose-snow avalanches are possible on extremely steep ($>40^\circ$) slopes.

Snowpack structure

The snowpack is generally wet down to the ground. Isolated snowdrifts are prone to triggering on high-altitude shady slopes, otherwise the snowpack is stable. Often a melt-freeze crust has formed. Due to higher temperatures and intermittent radiation, the snowpack will soften during the daytime.

Weather

On Friday, initially dry with scattered clouds and some sunshine. Later, clouds will move in, visibility deteriorate. In late morning, rainfall and snowfall will spread, the snowfall level in the afternoon will lie at 2200-2500 m. Westerly winds will be light to moderate, but gradually intensify in the high alpine regions. At 2000 m: 2-4 degrees; at 3000 m: -2 degrees.

Outlook

Low avalanche danger

Translated by Jeffrey McCabe, www.creativtrans.com

Avalanche problems



Danger ratings



Expositions

