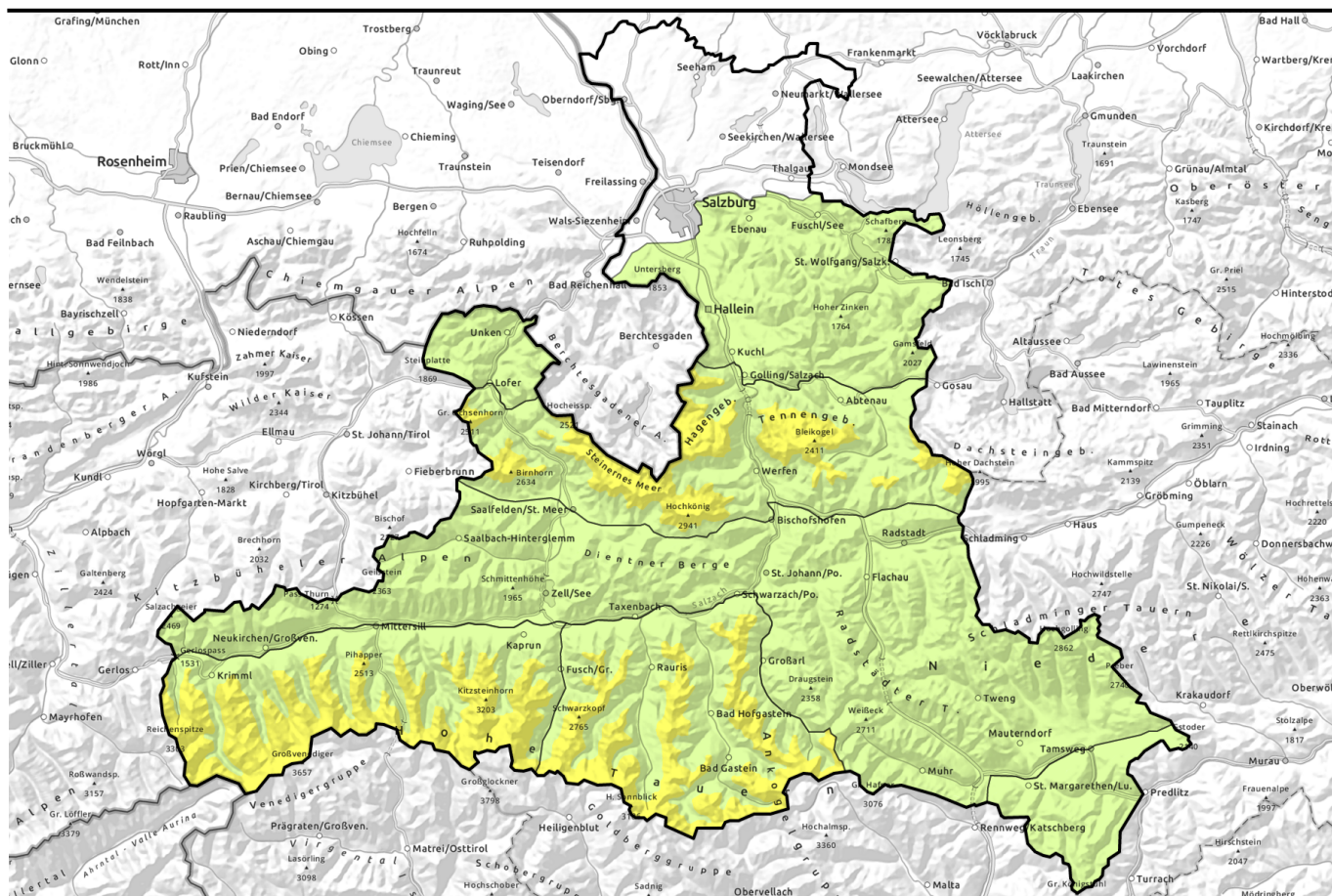


# Avalanche report for Thursday, 27.04.2023



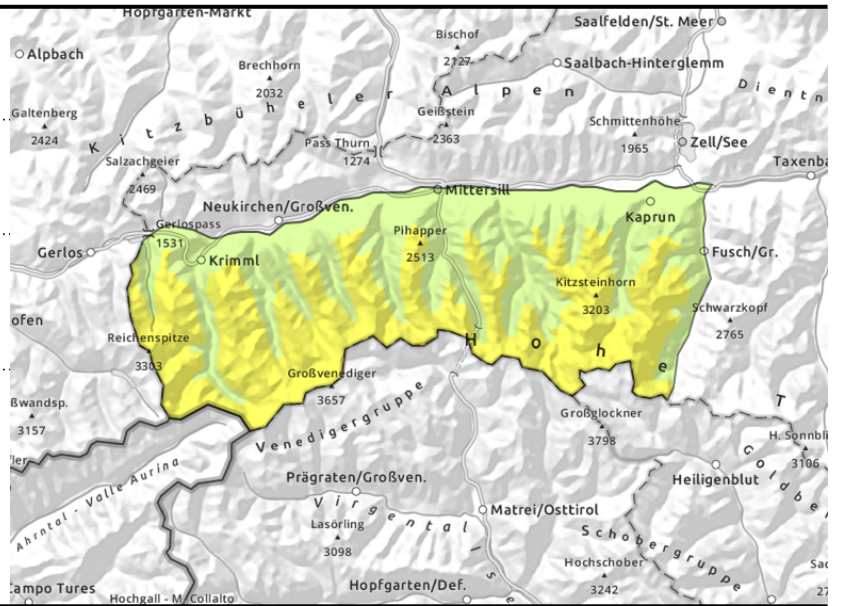
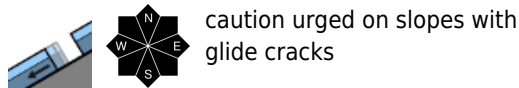
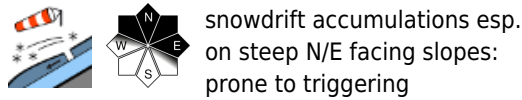
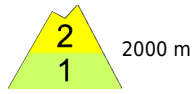
## Snowdrift problem at high altitudes, moderate glide-snow avalanche danger in regions where snowfall was heaviest

	<p>2000 m Großenedigergruppe Nord, Großenedigergruppe Alpenhauptkamm, Glocknergruppe Nord, Glocknergruppe Alpenhauptkamm</p>	
	<p>2400 m Loferer und Leoganger Steinberge, Steinernes Meer, Hochkönig, Hagengebirge, Göllstock, Tennengebirge, Gosaukamm, Goldberggruppe Alpenhauptkamm, Goldberggruppe Nord</p>	
	<p>Niedere Tauern Süd, Ankogelgruppe, Muhr, Niedere Tauern Alpenhauptkamm, Niedere Tauern Nord, Pongauer Grasberge, Dientner Grasberge, Kitzbüheler Alpen, Glemmtal, Oberpinzgauer Grasberge, Chiemgauer Alpen, Heutal, Reiteralpe, Osterhorngruppe, Gamsfeldgruppe, Untersbergstock</p>	
	<p>Nockberge</p>	

<p><b>Avalanche problems</b></p>	<p><b>Danger ratings</b></p>	<p><b>Expositions</b></p>
----------------------------------	------------------------------	---------------------------

# Avalanche report for Thursday, 27.04.2023

**Großvenedigergruppe Nord, Großvenedigergruppe Alpenhauptkamm, Glocknergruppe Nord, Glocknergruppe Alpenhauptkamm**



## Snowdrift problem at high altitude. Glide-snow avalanches on steep grassy slopes.

Avalanche danger above 2000 m is MODERATE, below that altitude danger is LOW.

As a result of fresh snow and moderate-to-strong winds, wide-ranging snowdrift accumulations have been generated esp. in summit and ridgelines areas over the last few days which on N/E facing slopes above 2600 m in particular can be triggered by one single winter sports enthusiast. Avalanches are mostly medium-sized, but if deeper layers are fractured can grow to large size. In other regions, the weak layers in the old snow are only found on very unfavourable slopes such as in transitions from shallow to deep snow on extremely steep shady slopes (>40°) above 2600 m, where minimum additional loading can trigger them.

Below 2400 m, moderate danger of small-to-medium naturally triggered glide-snow avalanches. Also wet loose-snow avalanches in steep rocky terrain are possible in case of solar radiation and moist air.

### Snowpack structure

Over the last few days, 40-60 cm of fresh snow has been registered amid moderate-to-strong NW winds, wide ranging snowdrift accumulations have been generated, well bonded below 2600 m, at high altitudes less well bonded. In the upper part of the snowpack (60-100 cm below the surface) there are weak faceted layers on shady slopes above 2600 m. On steep grassy slopes the snowpack can glide as a mass over the moist ground. Due to solar radiation and moist air, the snowpack softens. Below 1800 m there is little snow on the ground.

### Weather

On Thursday, dense cloud will persist in the morning, a bit more pleasant in the Lungau, a bit of rainfall, snowfall above 1200 - 1400 m. The latter part of the day will be mostly dry, clouds will disperse somewhat. Winds will be light to moderate from W/NW. At 2000 m: -1 to +2 degrees; at 3000 m: -8 to -5 degrees.

### Outlook

On Friday, mostly cloudy, some snowfall above 2000-2200 m, below that altitude as rainfall which will make the snowpack even wetter. Wet loose-snow avalanches and glide-snow avalanches are possible.

#### Avalanche problems



#### Danger ratings

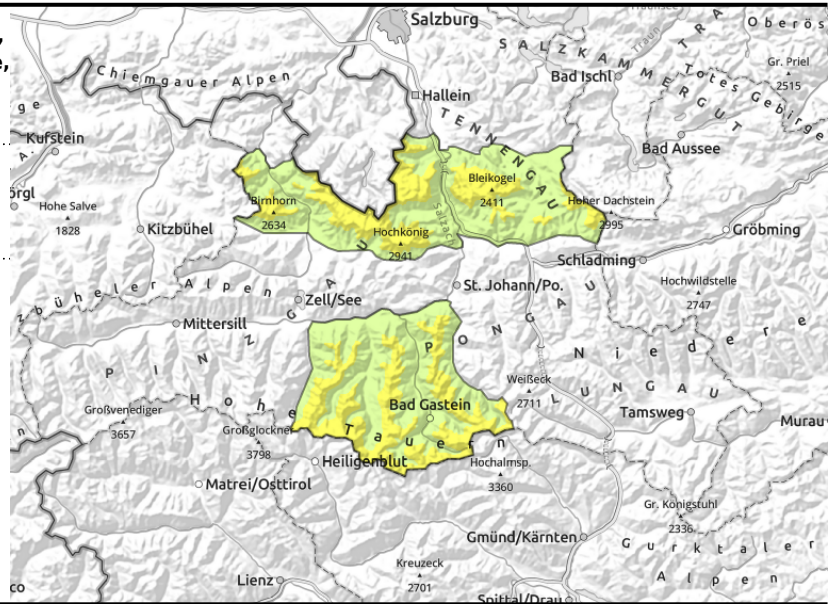
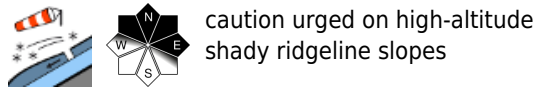


#### Expositions



# Avalanche report for Thursday, 27.04.2023

**Loferer und Leoganger Steinberge, Steinernes Meer, Hochkönig, Hagengebirge, Göllstock, Tennengebirge, Gosaukamm, Goldberggruppe Alpenhauptkamm, Goldberggruppe Nord**



## Some trigger-sensitive snowdrift masses at high altitudes

Avalanche danger above 2400m is MODERATE, below that altitude danger is LOW. Due to some fresh snow and wind, fresh snowdrift accumulations have been generated in ridgeline terrain and behind abrupt drops in the terrain, trigger-sensitive on shady slopes. Likelihood of triggering and size of avalanches increase somewhat with ascending altitude. In very isolated cases, fractures can occur down to more deeply embedded layers inside the snowpack, then avalanches can grow to larger size. In case of solar radiation, in the afternoon, small loose-snow avalanches are possible on extremely steep (>40°) slopes. In very isolated cases, small glide-snow avalanches are possible on steep grassy slopes.

### Snowpack structure

#### Weather

On Thursday, dense cloud will persist in the morning, a bit more pleasant in the Lungau, a bit of rainfall, snowfall above 1200 - 1400 m. The latter part of the day will be mostly dry, clouds will disperse somewhat. Winds will be light to moderate from W/NW. At 2000 m: -1 to +2 degrees; at 3000 m: -8 to -5 degrees.

#### Outlook

On Friday, mostly cloudy, some snowfall above 2000-2200 m, below that altitude as rainfall which will make the snowpack even wetter. Wet loose-snow avalanches and glide-snow avalanches are possible.

#### Avalanche problems



#### Danger ratings

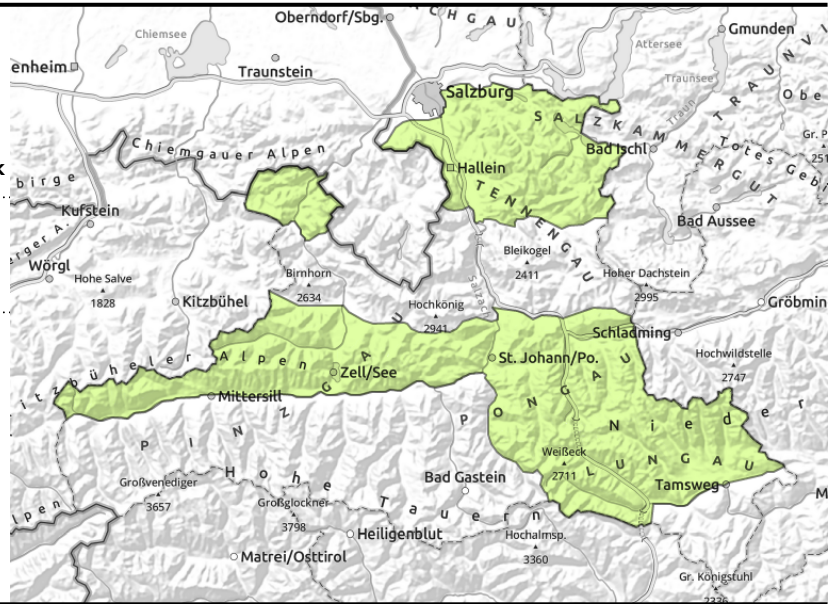


#### Expositions



# Avalanche report for Thursday, 27.04.2023

**Niedere Tauern Süd, Ankogelgruppe, Muhr, Niedere Tauern Alpenhauptkamm, Niedere Tauern Nord, Pongauer Grasberge, Dientner Grasberge, Kitzbüheler Alpen, Glemmtal, Oberpinzgauer Grasberge, Chiemgauer Alpen, Heutal, Reiteralpe, Osterhorngruppe, Gamsfeldgruppe, Untersbergstock**



AVOID small snowdrift patches in tricky terrain

## Small snowdrift masses at high altitudes

Avalanche danger is LOW.

As a result of fresh snow and moderate-to-strong winds, wide-ranging snowdrift accumulations have been generated esp. in summit and ridgelines areas over the last few days which on N/E facing slopes above 2600 m in particular can be triggered by one single winter sports enthusiast. Caution is urged in terrain where it is possible to take a fall.

In case of solar radiation, in the afternoon, small loose-snow avalanches are possible on extremely steep (>40°) slopes. In very isolated cases, small glide-snow avalanches are possible on steep grassy slopes.

### Snowpack structure

As a result of fresh snow and NW winds, mostly small snowdrift accumulations have been generated, bonding will with the snowpack due to some solar radiation, only on shady slopes are they trigger-sensitive. The snowpack will soften up during the daytime. Below 1800 m there is little snow on the ground.

### Weather

On Thursday, dense cloud will persist in the morning, a bit more pleasant in the Lungau, a bit of rainfall, snowfall above 1200 - 1400 m. The latter part of the day will be mostly dry, clouds will disperse somewhat. Winds will be light to moderate from W/NW. At 2000 m: -1 to +2 degrees; at 3000 m: -8 to -5 degrees.

### Outlook

On Friday, mostly cloudy, some snowfall above 2000-2200 m, below that altitude as rainfall which will make the snowpack even wetter. Wet loose-snow avalanches and glide-snow avalanches are possible.

#### Avalanche problems



#### Danger ratings



#### Expositions

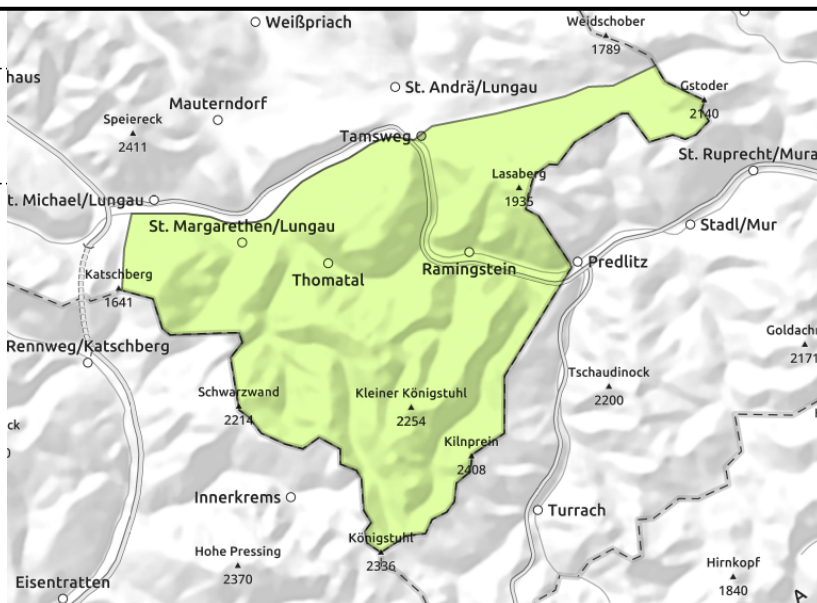


# Avalanche report for Thursday, 27.04.2023

## Nockberge



isolated wet loose-snow avalanches possible



## Low avalanche danger

Only isolated danger zones for slab avalanches on extremely steep (>40°) shady slopes in summit and ridgeline zones, releases small, outweighed by the risks of taking a fall. Also small wet loose snow avalanches possible due to milder temperatures and solar radiation.

## Snowpack structure

The snowpack is generally wet down to the ground. Isolated snowdrifts are prone to triggering on high-altitude shady slopes, otherwise the snowpack is stable. Often a melt-freeze crust has formed. Due to higher temperatures and intermittent radiation, the snowpack will soften during the daytime.

## Weather

On Thursday, dense cloud will persist in the morning, a bit more pleasant in the Lungau, a bit of rainfall, snowfall above 1200 - 1400 m. The latter part of the day will be mostly dry, clouds will disperse somewhat. Winds will be light to moderate from W/NW. At 2000 m: -1 to +2 degrees; at 3000 m: -8 to -5 degrees.

## Outlook

Low avalanche danger

Translated by Jeffrey McCabe, [www.creativtrans.com](http://www.creativtrans.com)

### Avalanche problems



### Danger ratings



### Expositions

