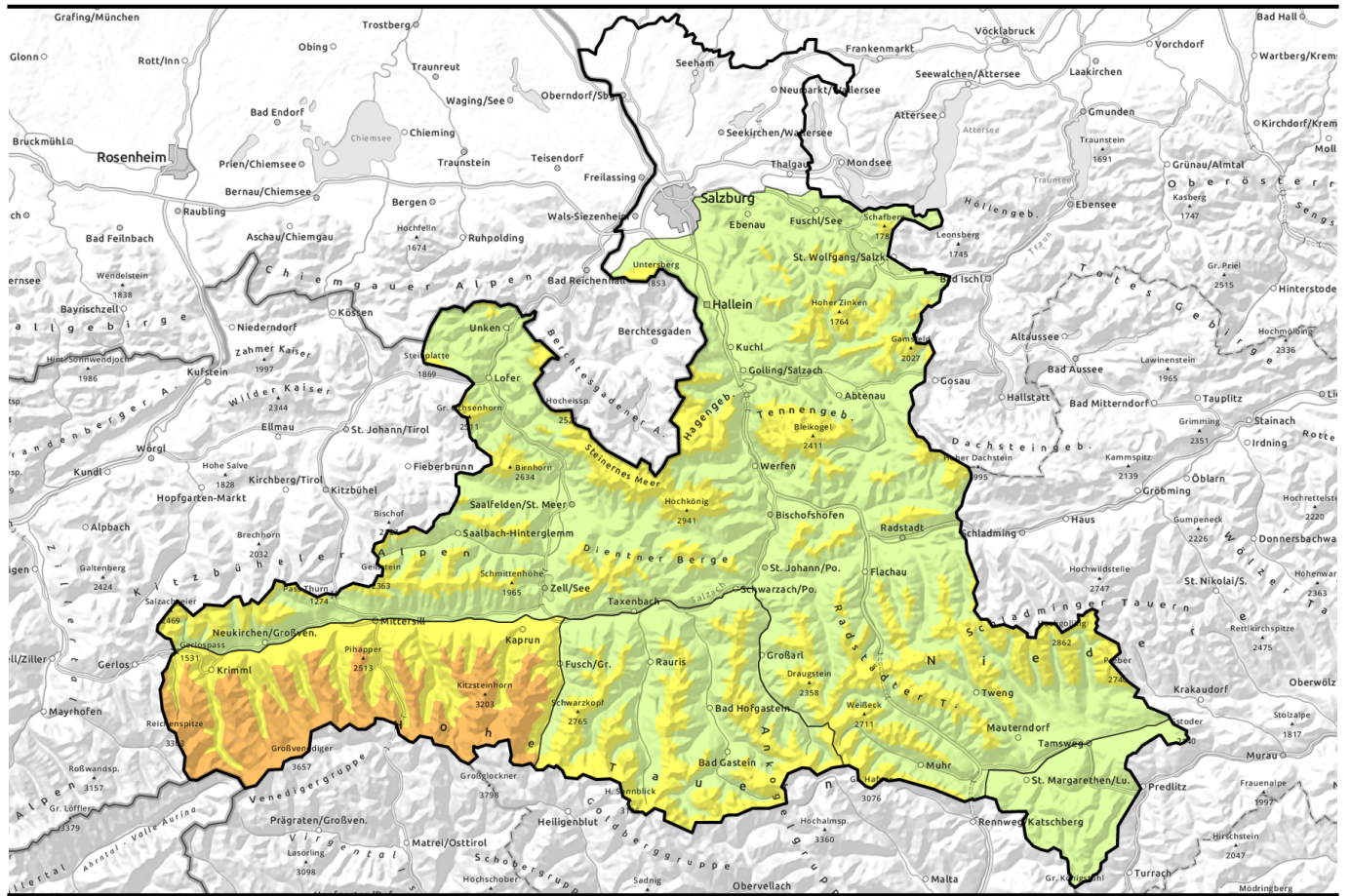


# Avalanche report for Wednesday, 26.04.2023



## Persistent weak layer in Hohe Tauern, heed snowdrift patches

	<p>Großenedigergruppe Nord, Großenedigergruppe Alpenhauptkamm, Glocknergruppe Nord, Glocknergruppe Alpenhauptkamm</p>	
	<p>Steinernes Meer, Hochkönig, Hagengebirge, Göllstock, Tennengebirge, Gosaukamm, Loferer und Leoganger Steinberge, Oberpinzgauer Grasberge, Niedere Tauern Nord, Niedere Tauern Alpenhauptkamm, Kitzbüheler Alpen, Glemmtal, Dientner Grasberge, Pongauer Grasberge, Osterhorngruppe, Gamsfeldgruppe, Untersbergstock, Chiemgauer Alpen, Heutal, Reiteralpe, Ankogelgruppe, Muhr, Niedere Tauern Süd</p>	
	<p>Goldberggruppe Nord, Goldberggruppe Alpenhauptkamm</p>	
	<p>Nockberge</p>	

### Avalanche problems



### Danger ratings



### Expositions



# Avalanche report for **Wednesday, 26.04.2023**

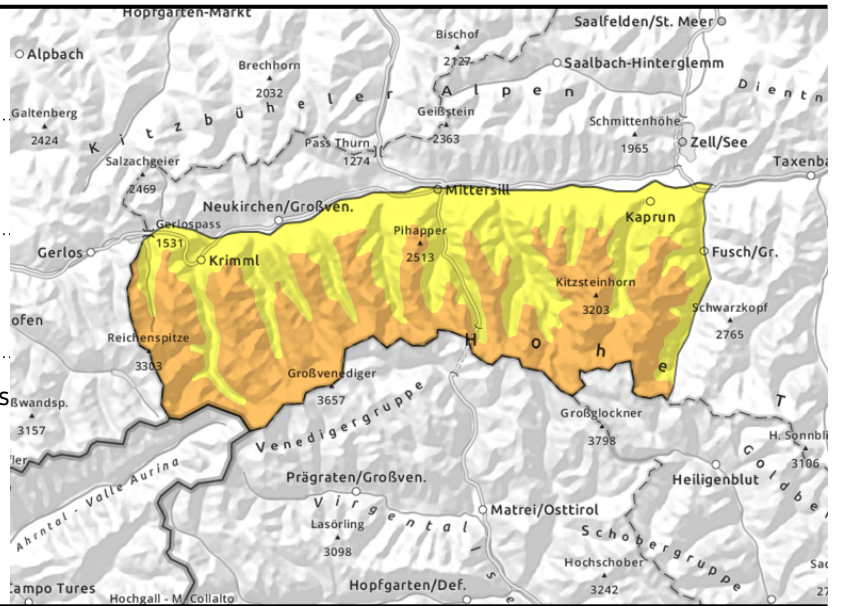
**Großvenedigergruppe Nord, Großvenedigergruppe Alpenhauptkamm, Glocknergruppe Nord, Glocknergruppe Alpenhauptkamm**



snowdrifts esp. on N/E facing slopes prone to triggering



AVOID very steep (>35°) slopes in high alpine regions



## Caution: snowdrifts and persistent weak layer at high altitude. Glide-snow avalanches on steep grassy slopes.

Avalanche danger above 2600 m is CONSIDERABLE, below that altitude danger is MODERATE. Fresh snowdrift accumulations on N/E facing slopes can easily be triggered at high altitudes, grow to medium size, also fracture down to deeper embedded layers above 2600 m and become still larger. Difficult to recognize, occur esp. in ridgeline terrain and summit zones. Frequency and size and trigger-sensitivity increase with ascending altitude. In addition, there are isolated weak layers in the old snowpack which can be triggered by one sole person. They lie on very steep (>35°) shady slopes above 1600 m. Transitions from shallow to deep snow are unfavorable. In case of solar radiation, small loose-snow avalanches can be expected in the afternoon on steep (>40°) slopes. Also isolated small-to-medium glide-snow avalanches continue to be possible on steep grass-covered slopes.

### Snowpack structure

Between Tuesday afternoon and Wednesday morning, 15-25 cm of fresh snow is expected, locally up to 30 cm. Moderate-to-strong NW winds will transport the snow, generated fresh snowdrifts atop a thoroughly wet snowpack below 2400 m, often with a thin melt-freeze crust. Bonding deteriorates with ascending altitude. In the upper part of the snowpack there are weak expansively metamorphosed (faceted) layers above 2400 m which have led to numerous, sometimes large-sized avalanches during the last few days.

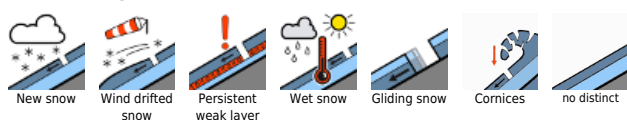
### Weather

Wednesday morning: dense clouds, some rain/snow (snow above 800-1000m) in the Northern Alps. In the Tauern the snowfall level is higher. In the Nockberge it will probably remain dry. In the afternoon, conditions improving, a bit of sunshine. Winds light-to-moderate, sometimes brisk, from W/NW. At 2000 m: from -5 rising to -1 degree; at 3000 m: from -12 to -8 degrees.

### Outlook

Thursday: little change. A bit of snowfall in the morning, clouds will disperse in the afternoon. Somewhat milder, which will regain some firmness for the snowpack. Isolated wet loose-snow slides

#### Avalanche problems



#### Danger ratings



#### Expositions



# Avalanche report for **Wednesday, 26.04.2023**

possible, also glide-snow avalanches are a threat.

## Avalanche problems



## Danger ratings

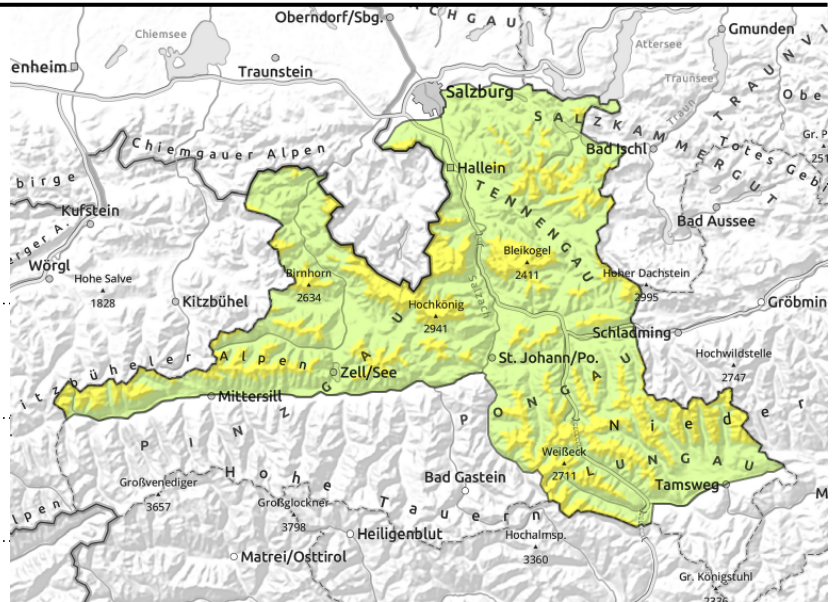




## Expositions





# Avalanche report for **Wednesday, 26.04.2023**

**Steinernes Meer, Hochkönig, Hagengebirge, Göllstock, Tennengebirge, Gosaukamm, Loferer und Leoganger Steinberge, Oberpinzgauer Grasberge, Niedere Tauern Nord, Niedere Tauern Alpenhauptkamm, Kitzbüheler Alpen, Glemmtal, Dientner Grasberge, Pongauer Grasberge, Osterhorngruppe, Gamsfeldgruppe, Untersbergstock, Chiemgauer Alpen, Heutal, Reiteralpe, Ankogelgruppe, Muhr, Niedere Tauern Süd**



  Caution urged on high-altitude shady ridgeline slopes

  Caution urged on slopes with glide cracks

## Small snowdrift masses at high altitudes

Avalanche danger above 2400m is MODERATE, below that altitude danger is LOW.

Due to some fresh snow and wind, fresh snowdrift accumulations have been generated in ridgeline terrain and behind abrupt drops in the terrain, trigger-sensitive on shady slopes. Likelihood of triggering and size of avalanches increase somewhat with ascending altitude.

In case of solar radiation, in the afternoon, small loose-snow avalanches are possible on extremely steep (>40°) slopes. In very isolated cases, small glide-snow avalanches are possible on steep grassy slopes.

## Snowpack structure

Between Tuesday afternoon and Wednesday morning, 15-25 cm of fresh snow is expected, locally up to 30 cm. Moderate-to-strong NW winds will transport the snow, generated fresh snowdrifts atop a thoroughly wet snowpack below 2400 m, often with a thin melt-freeze crust. Below 1600 m there is not much snow.

## Weather

Wednesday morning: dense clouds, some rain/snow (snow above 800-1000m) in the Northern Alps. In the Tauern the snowfall level is higher. In the Nockberge it will probably remain dry. In the afternoon, conditions improving, a bit of sunshine. Winds light-to-moderate, sometimes brisk, from W/NW. At 2000 m: from -5 rising to -1 degree; at 3000 m: from -12 to -8 degrees.

## Outlook

Thursday: little change. A bit of snowfall in the morning, clouds will disperse in the afternoon. Somewhat milder, which will regain some firmness for the snowpack. Isolated wet loose-snow slides possible, also glide-snow avalanches are a threat.

### Avalanche problems



### Danger ratings



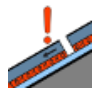
### Expositions




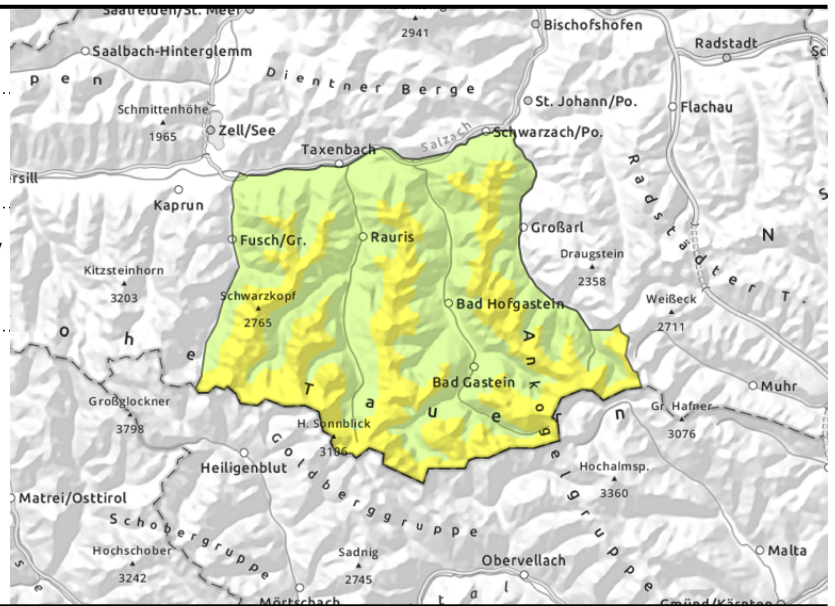
# Avalanche report for **Wednesday, 26.04.2023**

## Goldberggruppe Nord, Goldberggruppe Alpenhauptkamm



 avoid steep (>35°) large shady slopes at high altitudes

 caution on high-altitude shady ridgeline slopes



## Fresh snow and drifts prone to triggering. Persistent weak layer at high altitude.

Avalanche danger above 2400 m is MODERATE, below that altitude danger is LOW.

Dry-snow slab avalanches can be triggered by one sole skier and grow to large size. Danger zones lie on very steep (>35°) shady slopes (NW/N/NE) above 2400 m. They are difficult to recognize on-site. Caution urged in transitions from shallow to deep snow and in general where the snow is shallow. Amid moderate winds, fresh snowdrift accumulations have been generated in ridgeline terrain and summit zones. They are mostly small, but on N/E facing slopes above 2400 m prone to triggering. Likelihood of triggering and size of danger zones increase with ascending altitude. Caution urged in places which are prone to forcing a fall.

In addition, intermittent solar radiation and moist air makes small loose-snow avalanches possible on extremely steep (>40) slopes. In isolated cases small and medium glide-snow avalanches are possible in all aspects on steep grassy slopes.

### Snowpack structure

Between Tuesday afternoon and Wednesday morning, 15-25 cm of fresh snow is expected, locally up to 30 cm. Moderate-to-strong NW winds will transport the snow, generated fresh snowdrifts atop a thoroughly wet snowpack below 2400 m, often with a thin melt-freeze crust. Bonding deteriorates with ascending altitude. In the upper part of the snowpack there are weak expansively metamorphosed (faceted) layers above 2400 m which have led to numerous, sometimes large-sized avalanches during the last few days. Below 1600 m there is not much snow.

### Weather

Wednesday morning: dense clouds, some rain/snow (snow above 800-1000m) in the Northern Alps. In the Tauern the snowfall level is higher. In the Nockberge it will probably remain dry. In the afternoon, conditions improving, a bit of sunshine. Winds light-to-moderate, sometimes brisk, from W/NW. At 2000 m: from -5 rising to -1 degree; at 3000 m: from -12 to -8 degrees.

### Outlook

Thursday: little change. A bit of snowfall in the morning, clouds will disperse in the afternoon. Somewhat milder, which will regain some firmness for the snowpack. Isolated wet loose-snow slides

#### Avalanche problems



#### Danger ratings



#### Expositions



# Avalanche report for **Wednesday, 26.04.2023**

possible, also glide-snow avalanches are a threat.

## Avalanche problems



## Danger ratings



## Expositions

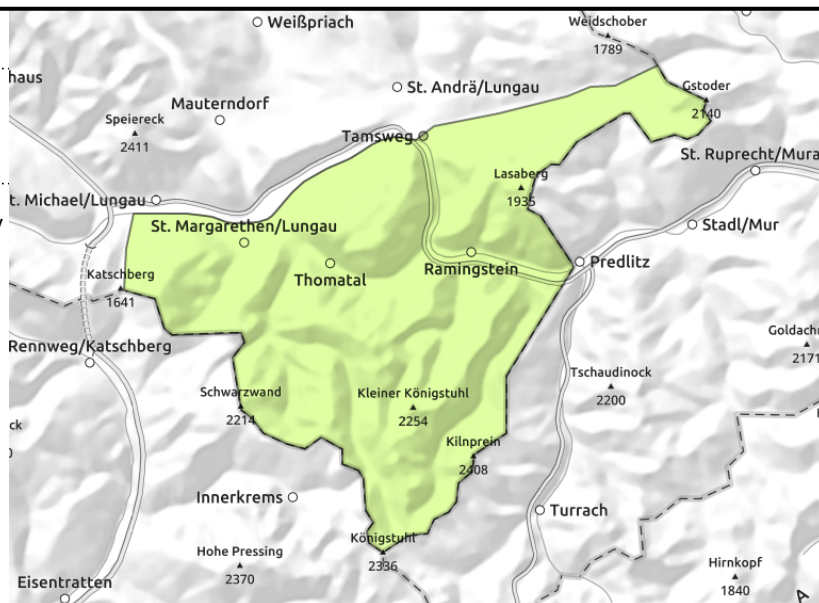


# Avalanche report for **Wednesday, 26.04.2023**

## Nockberge



small drifts: avoid them in risky terrain



## Low avalanche danger

Only isolated danger zones for slab avalanches on extremely steep (>40°) shady slopes in summit and ridgeline zones, releases small, outweighed by the risks of taking a fall. Also small wet loose snow avalanches possible due to milder temperatures and solar radiation.

## Snowpack structure

The snowpack is generally wet down to the ground. Isolated snowdrifts are prone to triggering on high-altitude shady slopes, otherwise the snowpack is stable. Often a melt-freeze crust has formed. Due to higher temperatures and intermittent radiation, the snowpack will soften during the daytime.

## Weather

Wednesday morning: dense clouds, some rain/snow (snow above 800-1000m) in the Northern Alps. In the Tauern the snowfall level is higher. In the Nockberge it will probably remain dry. In the afternoon, conditions improving, a bit of sunshine. Winds light-to-moderate, sometimes brisk, from W/NW. At 2000 m: from -5 rising to -1 degree; at 3000 m: from -12 to -8 degrees.

## Outlook

Thursday: little change. A bit of snowfall in the morning, clouds will disperse in the afternoon. Somewhat milder, which will regain some firmness for the snowpack. Isolated wet loose-snow slides possible, also glide-snow avalanches are a threat.

Translated by Jeffrey McCabe, [www.creativtrans.com](http://www.creativtrans.com)

### Avalanche problems



### Danger ratings



### Expositions

