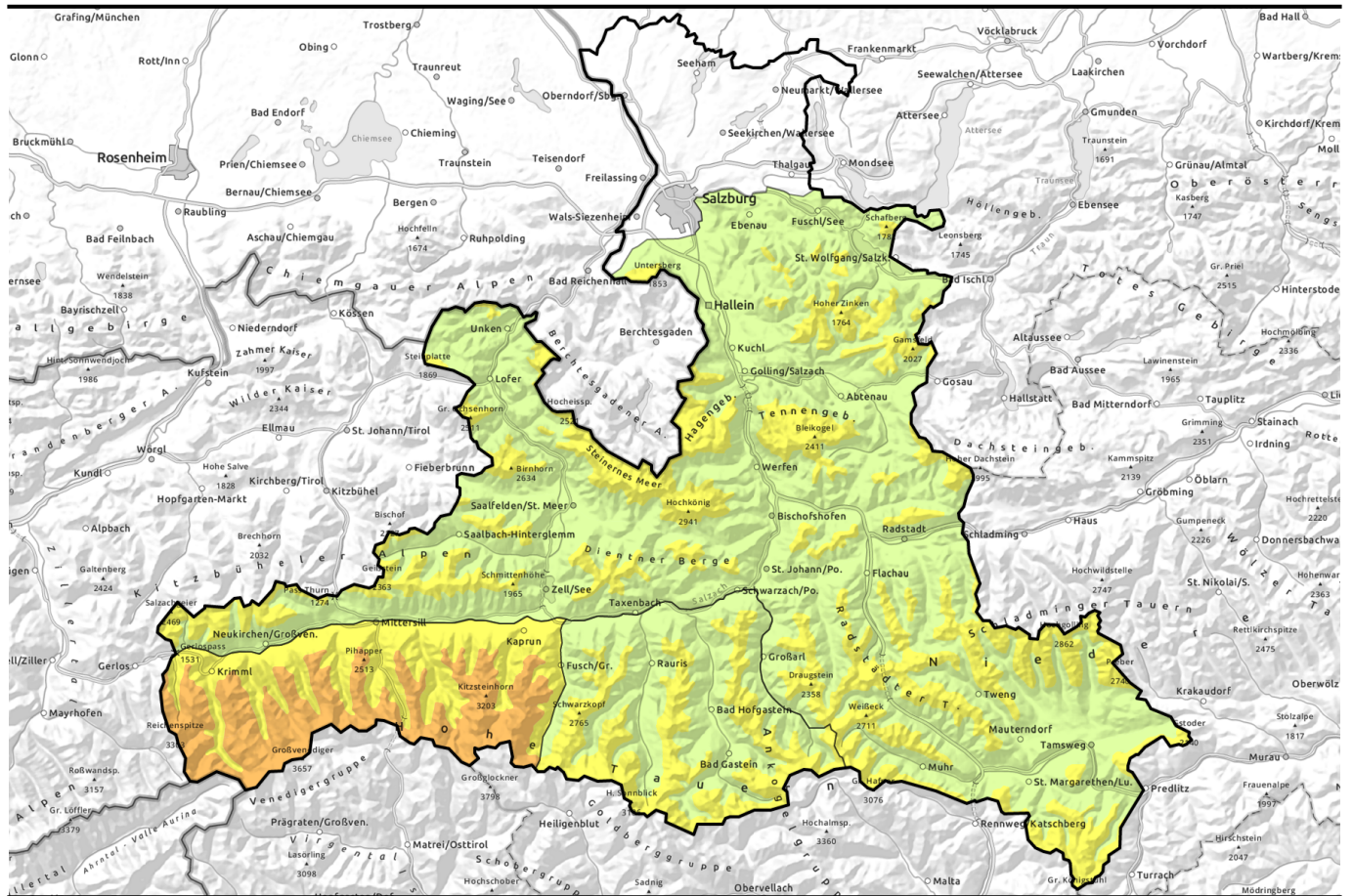


Avalanche report for Monday, 24.04.2023



Persistent weak layer in Hohe Tauern, snowdrift patches at high altitudes

<p>2600 m</p>	<p>Großenedigergruppe Nord, Großenedigergruppe Alpenhauptkamm, Glocknergruppe Nord, Glocknergruppe Alpenhauptkamm</p>	
<p>2400 m</p>	<p>Osterhorngruppe, Gamsfeldgruppe, Untersbergstock, Steinernes Meer, Hochkönig, Hagengebirge, Göllstock, Tennengebirge, Gosaukamm, Loferer und Leoganger Steinberge, Oberpinzgauer Grasberge, Dientner Grasberge, Pongauer Grasberge, Kitzbüheler Alpen, Glemmtal, Niedere Tauern Nord, Niedere Tauern Alpenhauptkamm, Niedere Tauern Süd, Ankogelgruppe, Muhr, Nockberge, Chiemgauer Alpen, Heutal, Reiteralpe</p>	
<p>2400 m</p>	<p>Goldberggruppe Nord, Goldberggruppe Alpenhauptkamm</p>	

Avalanche problems



Danger ratings



Expositions



Avalanche report for Monday, 24.04.2023

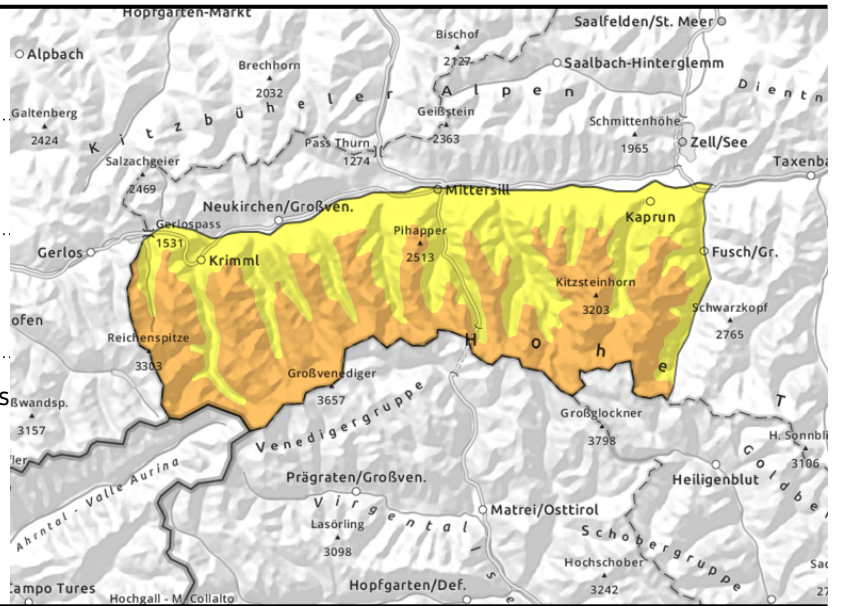
Großvenedigergruppe Nord, Großvenedigergruppe Alpenhauptkamm, Glocknergruppe Nord, Glocknergruppe Alpenhauptkamm



snowdrifts esp. on N/E facing slopes prone to triggering



AVOID very steep (>35°) slopes in high alpine regions



Caution: snowdrifts and persistent weak layer at high altitude. Glide-snow avalanches on steep grassy slopes.

Avalanche danger above 2400 m is CONSIDERABLE, below that altitude danger is MODERATE. Fresh snowdrift accumulations on N/E facing slopes can easily be triggered at high altitudes, grow to medium size, also fracture down to deeper embedded layers above 2600 m and become still larger. Difficult to recognize, occur esp. in ridgeline terrain and summit zones. Frequency and size and trigger-sensitivity increase with ascending altitude. In addition, there are isolated weak layers in the old snowpack which can be triggered by one sole person. They lie on very steep (>35°) shady slopes above 1600 m. Transitions from shallow to deep snow are unfavorable. In case of solar radiation, small loose-snow avalanches can be expected in the afternoon on steep (>40°) slopes. Also isolated small-to-medium glide-snow avalanches continue to be possible on steep grass-covered slopes.

Snowpack structure

Above 1800 m there was 10-15 cm of snowfall by Monday morning, up to 25 cm from place to place, amid moderate to strong winds which transported the fresh snow. On Tuesday, an additional 10-20 cm will be added to it. Moderate NW winds will transport the snow, deposited it atop a thoroughly wet snowpack below 2400 m. Further up, the snowdrifts lie atop an unfavorable snowpack surface on shady slopes. In the upper part of the snowpack there are weak expansively metamorphosed (faceted) layers above 2400 m which have led to numerous, sometimes large-sized avalanches during the last few days.

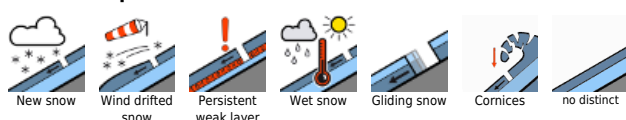
Weather

On Tuesday, again unfavorable backcountry touring conditions, dense clouds, snow showers above 1200-1500 m, brief thunderstorms possible. Dry phases possible in the morning. Winds light to moderate from W/NW. At 2000 m: -3 or -2 degrees; at 3000 m: -10 or -9 degrees.

Outlook

Wednesday: snowdrift accumulations remain prone to triggering esp. on shady slopes. Amid milder temperatures and intermittent sunshine, wet-snow and glide-snow avalanches possible.

Avalanche problems



Danger ratings

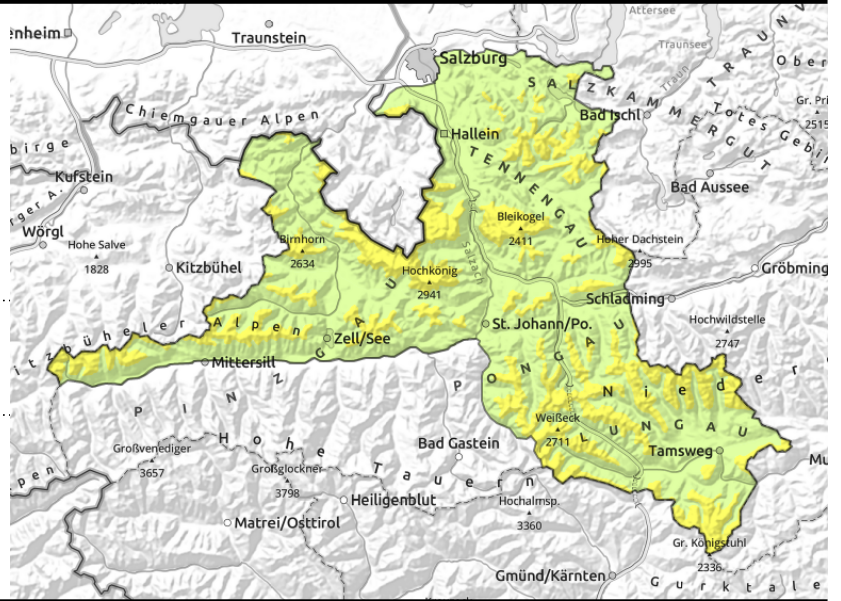


Expositions



Avalanche report for Monday, 24.04.2023

Osterhorngruppe, Gamsfeldgruppe, Untersbergstock, Steinernes Meer, Hochkönig, Hagengebirge, Göllstock, Tennengebirge, Gosaukamm, Loferer und Leoganger Steinberge, Oberpinzgauer Grasberge, Dientner Grasberge, Pongauer Grasberge, Kitzbüheler Alpen, Glemmtal, Niedere Tauern Nord, Niedere Tauern Alpenhauptkamm, Niedere Tauern Süd, Ankogelgruppe, Muhr, Nockberge, Chiemgauer Alpen, Heutal, Reiteralpe



caution urged on high-altitude shady ridgeline slopes

Small snowdrift accumulations at high altitudes

Avalanche danger above 2400m is MODERATE, below that altitude danger is LOW. Due to some fresh snow and wind, fresh snowdrift accumulations have been generated in ridgeline terrain and behind abrupt drops in the terrain, trigger-sensitive on shady slopes. Likelihood of triggering and size of avalanches increase somewhat with ascending altitude. In case of solar radiation, in the afternoon, small loose-snow avalanches are possible on extremely steep (>40°) slopes. In very isolated cases, small glide-snow avalanches are possible on steep grassy slopes.

Snowpack structure

Above 1800 m there was 5-15 cm of snowfall by Monday morning, amid moderate to strong winds which transported the fresh snow. On Tuesday, an additional 5-15 cm will be added to it. Small snowdrift accumulations are being deposited on shady slopes atop a soft unfavorable snowpack surface where they are prone to triggering. In other aspects and further down, the snow has become wetter or is deposited atop a soft unfavorable snowpack surface, below 2400 m the snowpack is often wet down to the ground. Below 1600 m there is hardly any snow on the ground.

Weather

On Tuesday, again unfavorable backcountry touring conditions, dense clouds, snow showers above 1200-1500 m, brief thunderstorms possible. Dry phases possible in the morning. Winds light to moderate from W/NW. At 2000 m: -3 or -2 degrees; at 3000 m: -10 or -9 degrees.

Outlook

Wednesday: snowdrift accumulations remain prone to triggering esp. on shady slopes. Amid milder temperatures and intermittent sunshine, wet-snow and glide-snow avalanches possible.

Avalanche problems



Danger ratings

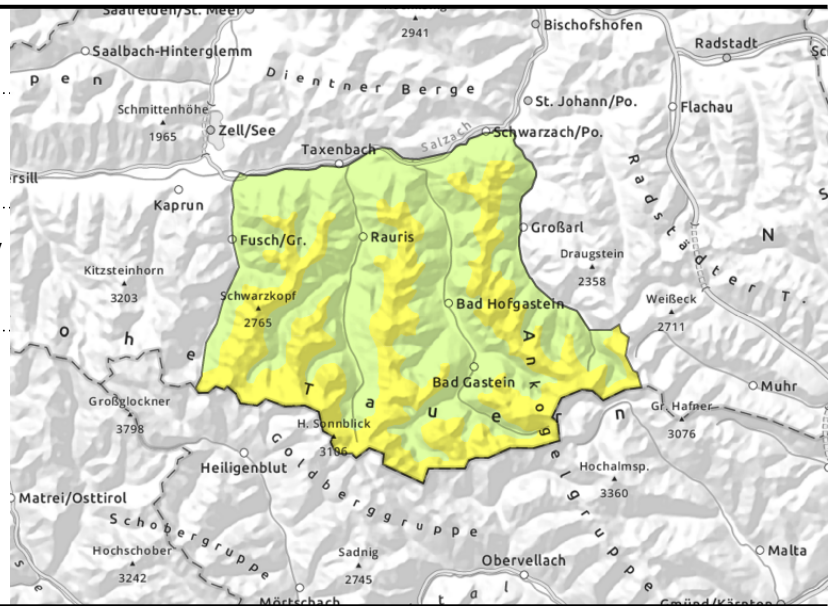
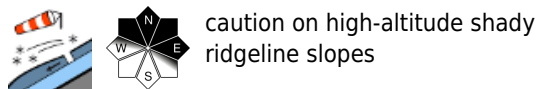
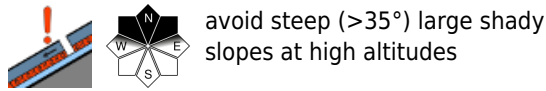


Expositions



Avalanche report for Monday, 24.04.2023

Goldberggruppe Nord, Goldberggruppe Alpenhauptkamm



Fresh snow and drifts prone to triggering. Persistent weak layer at high altitude.

Avalanche danger above 2400 m is MODERATE, below that altitude danger is LOW. Dry-snow slab avalanches can be triggered by one sole skier and grow to large size. Danger zones lie on very steep (>35°) shady slopes (NW/N/NE) above 2400 m. They are difficult to recognize on-site. Caution urged in transitions from shallow to deep snow and in general where the snow is shallow. Amid moderate winds, fresh snowdrift accumulations have been generated in ridgeline terrain and summit zones. They are mostly small, but on N/E facing slopes above 2400 m prone to triggering. Likelihood of triggering and size of danger zones increase with ascending altitude. Caution urged in places which are prone to forcing a fall. In addition, intermittent solar radiation and moist air makes small loose-snow avalanches possible on extremely steep (>40) slopes. In isolated cases small and medium glide-snow avalanches are possible in all aspects on steep grassy slopes.

Snowpack structure

Above 1800 m there was 5-15 cm of snowfall by Monday morning, amid moderate to strong winds which transported the fresh snow. On Tuesday, an additional 5-15 cm will be added to it. Small snowdrift accumulations are being deposited on shady slopes atop a soft unfavorable snowpack surface where they are prone to triggering. In other aspects and further down, the snow has become wetter or is deposited atop a soft unfavorable snowpack surface, below 2400 m the snowpack is often wet down to the ground. Below 1600 m there is hardly any snow on the ground.

Weather

On Tuesday, again unfavorable backcountry touring conditions, dense clouds, snow showers above 1200-1500 m, brief thunderstorms possible. Dry phases possible in the morning. Winds light to moderate from W/NW. At 2000 m: -3 or -2 degrees; at 3000 m: -10 or -9 degrees.

Outlook

Wednesday: snowdrift accumulations remain prone to triggering esp. on shady slopes. Amid milder temperatures and intermittent sunshine, wet-snow and glide-snow avalanches possible.

Translated by Jeffrey McCabe, www.creativtrans.com

Avalanche problems



Danger ratings



Expositions

