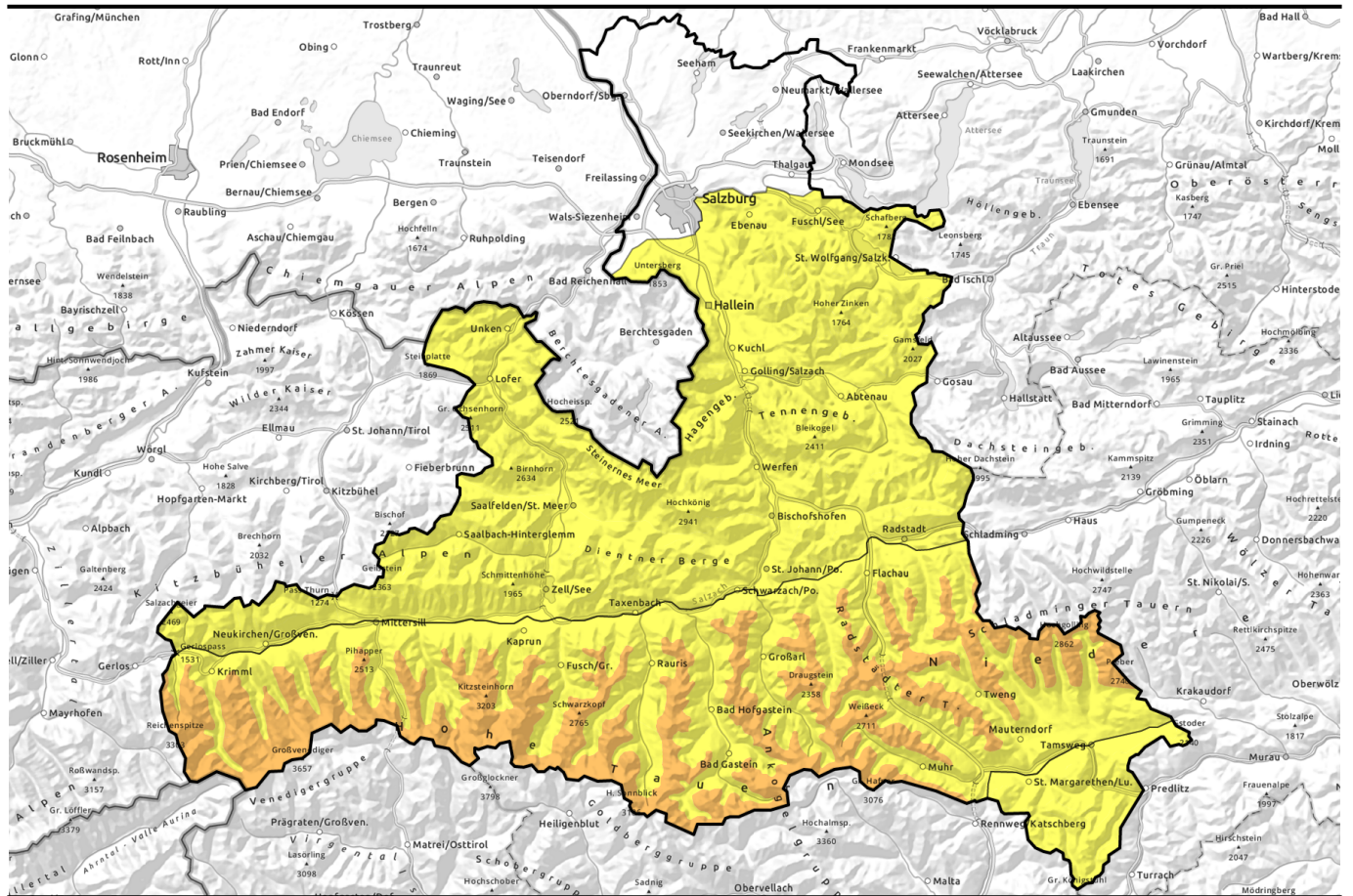


# Avalanche report for Sunday, 23.04.2023



## Main problem: wet snow

	<p>2200 m Goldberggruppe Alpenhauptkamm, Niedere Tauern Alpenhauptkamm, Großvenedigergruppe Nord, Glocknergruppe Nord, Goldberggruppe Nord, Niedere Tauern Nord, Niedere Tauern Süd, Ankogelgruppe, Muhr, Großvenedigergruppe Alpenhauptkamm, Glocknergruppe Alpenhauptkamm</p>	
	<p>Osterhorngruppe, Gamsfeldgruppe, Untersbergstock, Steinernes Meer, Hochkönig, Hagengebirge, Göllstock, Tennengebirge, Gosaukamm, Chiemgauer Alpen, Heutal, Reiteralpe, Loferer und Leoganger Steinberge, Oberpinzgauer Grasberge, Dientner Grasberge, Pongauer Grasberge, Kitzbüheler Alpen, Glemmtal</p>	
	<p>Nockberge</p>	

### Avalanche problems



### Danger ratings

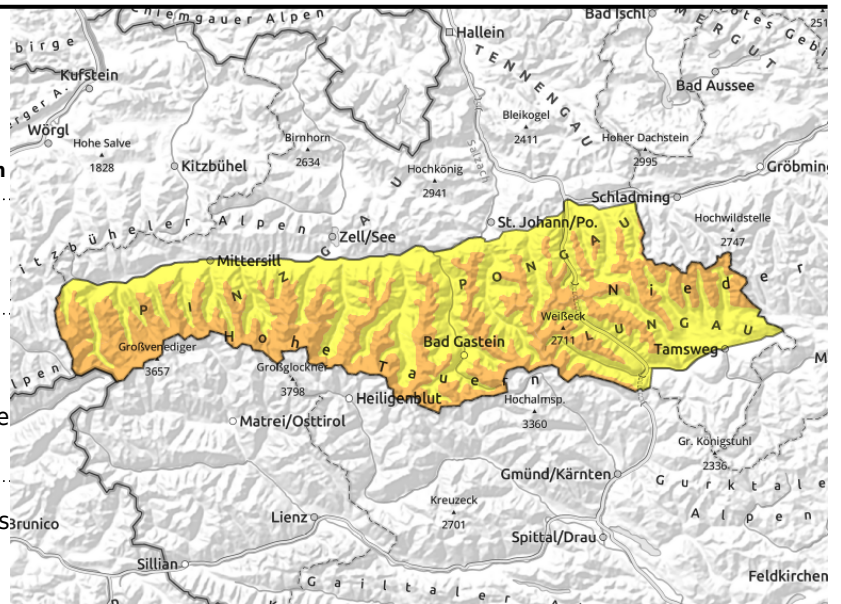




### Expositions

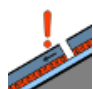



# Avalanche report for Sunday, 23.04.2023

**Goldberggruppe Alpenhauptkamm, Niedere Tauern Alpenhauptkamm, Großvenedigergruppe Nord, Glocknergruppe Nord, Goldberggruppe Nord, Niedere Tauern Nord, Niedere Tauern Süd, Ankogelgruppe, Muhr, Großvenedigergruppe Alpenhauptkamm, Glocknergruppe Alpenhauptkamm**



  with increasing wetness, naturally triggered wet-snow avalanches possible even in the morning

  AVOID very steep (>35°) slopes in high alpine regions

## Naturally triggered wet-snow avalanches even in the morning. Persistent weak layer on high-altitude shady slopes.

Avalanche danger above 2200 m is CONSIDERABLE, below that altitude danger is MODERATE. Naturally triggered wet-snow avalanches are possible even in the morning, following a night of mostly cloudy skies. This is the case in all aspects below 2700 m; medium, occasionally large-sized avalanches are possible. On extremely steep slopes small naturally triggered loose-snow avalanches can be expected, on steep grassy slopes in all aspects small-to-medium glide-snow avalanches. The likelihood of triggering increases during the course of the day due to warmer temperatures, moister air and diffuse solar radiation. Dry-snow slab avalanches can release above 2600 m on shady slopes even by minimum additional loading, mostly medium, in isolated cases large-sized.

### Snowpack structure

Saturday night, mostly cloudy and mild. Due to reduced outgoing radiation, only a thin melt-freeze crust can form and it will quickly soften during the day. The snowpack has few reserves of cold, even on north-facing slopes. With higher temperatures, moist air and possible rainfall up to 2400 m, it will become wetter still and forfeit its firmness.

Beneath the fresh snow which has fallen since Thursday there is a weak layer of faceted crystals which led to some large-sized avalanches during artificial triggering work. Also naturally triggered avalanches were observed.

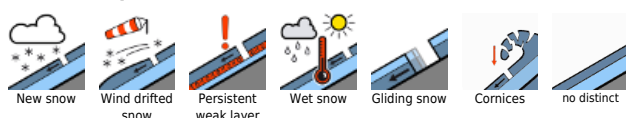
### Weather

On Sunday, limited visibility, the peaks hidden in fog. As of midday, rainfall will spread, the snowfall level will be at 2400 m. At high altitudes, moderate southerly winds in the afternoon. At 2000 m: between 4 and 6 degrees; at 3000 m: -2 degrees.

### Outlook

Temperatures will drop, thus make the wet-snow problem recede. As a result of fresh snowfall and wind, small fresh snowdrift accumulations will be generated.

#### Avalanche problems



#### Danger ratings

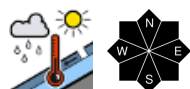


#### Expositions

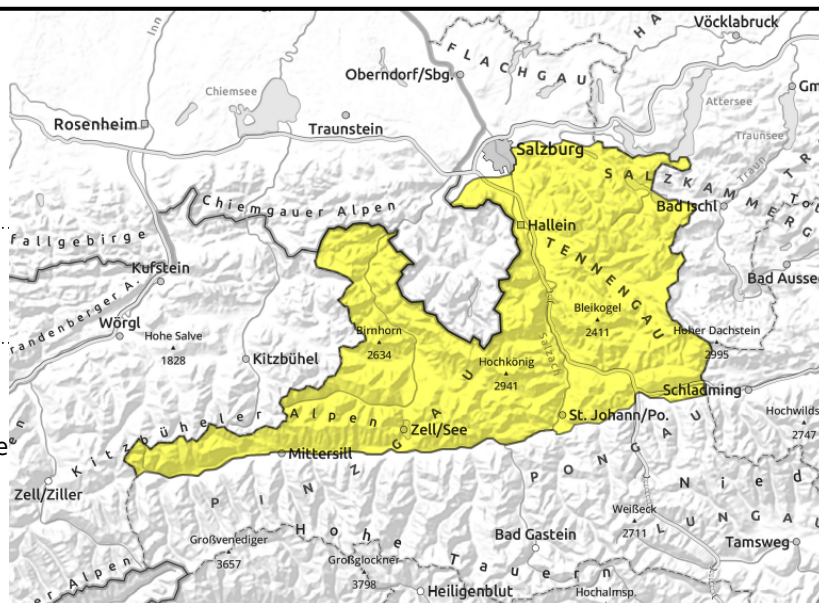


# Avalanche report for Sunday, 23.04.2023

Osterhorngruppe, Gamsfeldgruppe, Untersbergstock, Steinernes Meer, Hochkönig, Hagengebirge, Göllstock, Tennengebirge, Gosaukamm, Chiemgauer Alpen, Heutal, Reiteralpe, Loferer und Leoganger Steinberge, Oberpinzgauer Grasberge, Dientner Grasberge, Pongauer Grasberge, Kitzbüheler Alpen, Glemmtal



with increasing wetness, naturally triggered wet-snow avalanches possible even in the morning



## The snowpack is getting wetter.

Avalanche danger is MODERATE. During the morning, isolated small-to-medium wet-snow avalanches are possible in zones which have not yet discharged, mostly loose-snow, isolated slab avalanches. On steep grassy slopes, isolated naturally triggered glide-snow slides are expected. The likelihood of triggering increases during the course of the day, esp. on shady slopes.

### Snowpack structure

Saturday night, mostly cloudy and mild. Due to reduced outgoing radiation, only a thin melt-freeze crust can form and it will quickly soften during the day. The snowpack has few reserves of cold, even on north-facing slopes. With higher temperatures, moist air and possible rainfall up to 2400 m, it will become wetter still and forfeit its firmness.

### Weather

On Sunday, limited visibility, the peaks hidden in fog. As of midday, rainfall will spread, the snowfall level will be at 2400 m. At high altitudes, moderate southerly winds in the afternoon. At 2000 m: between 4 and 6 degrees; at 3000 m: -2 degrees.

### Outlook

Temperatures will drop, thus make the wet-snow problem recede. As a result of fresh snowfall and wind, small fresh snowdrift accumulations will be generated.

#### Avalanche problems



#### Danger ratings



#### Expositions

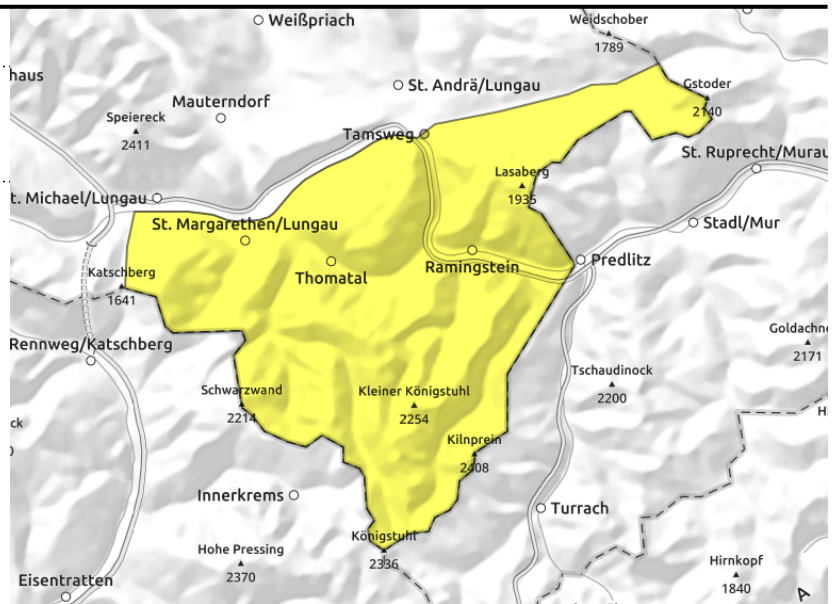


# Avalanche report for Sunday, 23.04.2023

## Nockberge



the warmer and weaker the snowpack, the likelier are wet loose-snow avalanches



## Loss of snowpack firmness due to higher temperatures

Avalanche danger is MODERATE.

Small, isolated medium wet-snow avalanches are possible in the morning hours in steep zones which have not yet discharged. Likelihood of triggering will increase as the day goes on. Heightened activity is expected esp. on shady slopes. Tours should be terminated early in the day.

### Snowpack structure

Nighttime skies will be mostly cloudy, outgoing radiation is hardly possible. The snowpack cannot freeze, and daytime warming and sunshine make it wetter, forfeiting its firmness, also on shady slopes.

### Weather

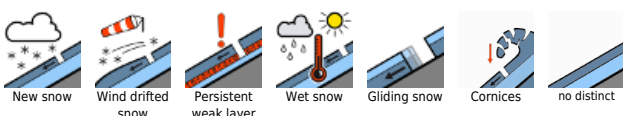
On Sunday, limited visibility, the peaks hidden in fog. As of midday, rainfall will spread, the snowfall level will be at 2400 m. At high altitudes, moderate southerly winds in the afternoon. At 2000 m: between 4 and 6 degrees; at 3000 m: -2 degrees.

### Outlook

Temperatures will drop, thus make the wet-snow problem recede.

Translated by Jeffrey McCabe, [www.creativtrans.com](http://www.creativtrans.com)

### Avalanche problems



### Danger ratings



### Expositions

