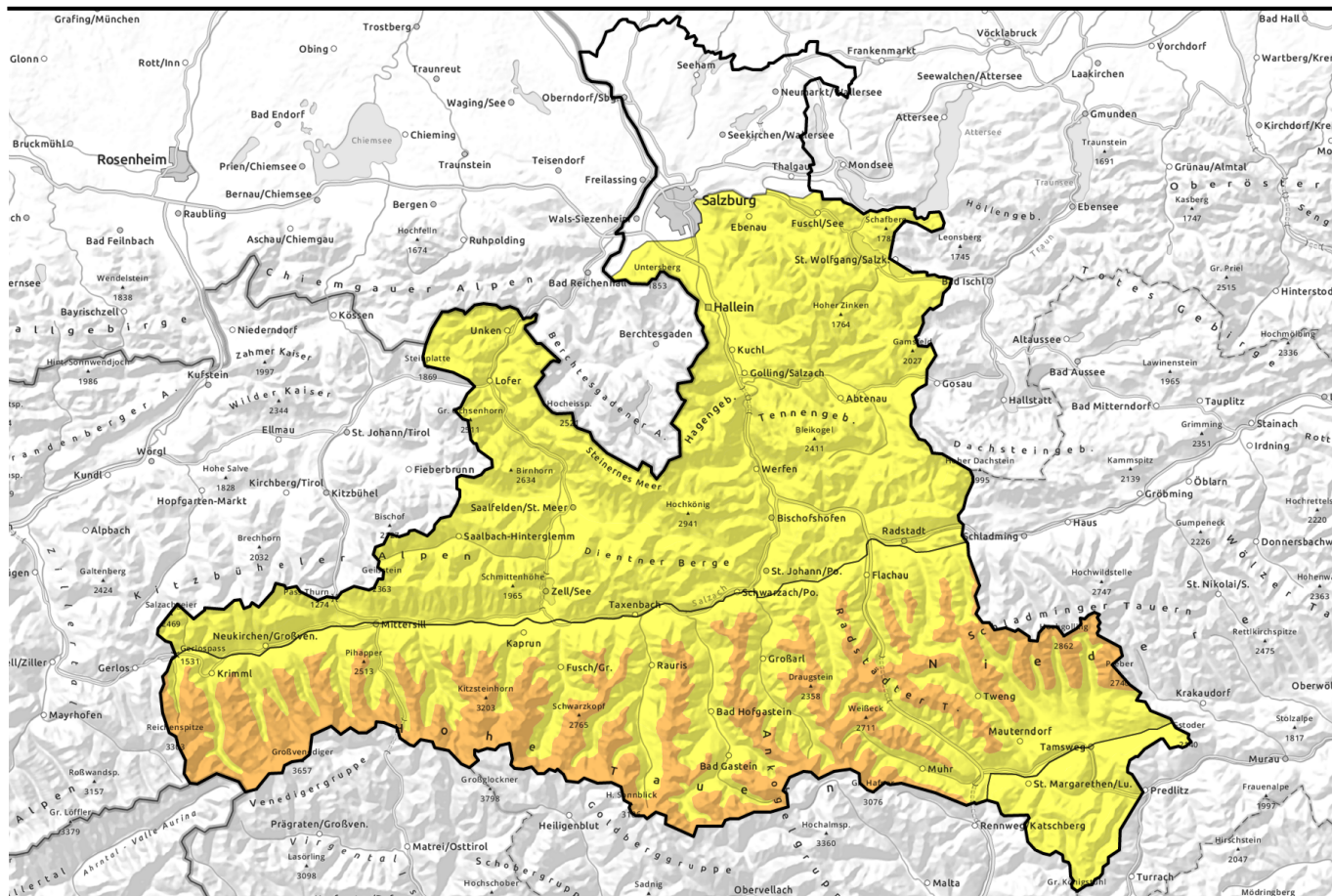


# Avalanche report for Saturday, 22.04.2023



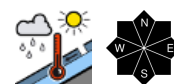
## Rising danger of naturally triggered wet-snow avalanches



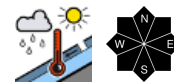
Goldberggruppe Alpenhauptkamm, Niedere Tauern Alpenhauptkamm, Großvenedigergruppe Nord, Glocknergruppe Nord, Goldberggruppe Nord, Niedere Tauern Nord, Niedere Tauern Süd, Ankogelgruppe, Muhr, Großvenedigergruppe Alpenhauptkamm, Glocknergruppe Alpenhauptkamm



Osterhorngruppe, Gamsfeldgruppe, Untersbergstock, Steinernes Meer, Hochkönig, Hagengebirge, Göllstock, Tennengebirge, Gosaukamm, Chiemgauer Alpen, Heutal, Reiteralpe, Loferer und Leoganger Steinberge, Oberpinzgauer Grasberge, Dientner Grasberge, Pongauer Grasberge, Kitzbüheler Alpen, Glemmtal



Nockberge



### Avalanche problems



### Danger ratings

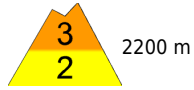
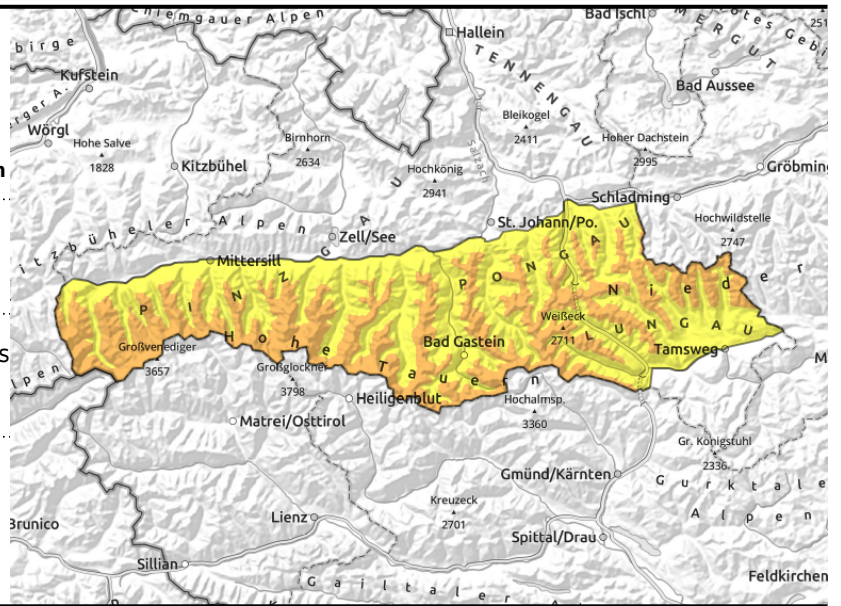


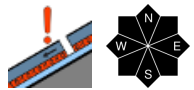
### Expositions

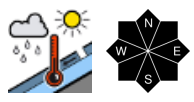


# Avalanche report for **Saturday, 22.04.2023**

**Goldberggruppe Alpenhauptkamm, Niedere Tauern Alpenhauptkamm, Großvenedigergruppe Nord, Glocknergruppe Nord, Goldberggruppe Nord, Niedere Tauern Nord, Niedere Tauern Süd, Ankogelgruppe, Muhr, Großvenedigergruppe Alpenhauptkamm, Glocknergruppe Alpenhauptkamm**



 **AVOID** very steep (>35°) slopes in high alpine regions

 caution esp. in runout zones of large wet-snow avalanches (e.g. ascents to refuges)

## Persistent weak layer at high altitudes. Rising danger of wet-snow avalanches.

Avalanche danger above 2200 m is **CONSIDERABLE**, below that altitude danger is **MODERATE**. Dry-snow slab avalanches can release from the upper part of the snowpack on W/N/E facing slopes even by the weight of one person, mostly medium sized, but fractures down to deeper layers of the snowpack cannot be excluded. Danger zones increase with ascending altitude and are difficult to recognize. Fresh snowdrift accumulations from recent days are still prone to triggering in high alpine regions (>3000m) on very steep shady slopes.+

In addition, the danger of wet-snow avalanches will rapidly increase in the morning hours in all aspects below 2700 m. Medium, isolated large-sized wet-snow avalanches are possible during the course of the day. On extremely steep slopes, small naturally triggered loose-snow avalanches can be expected, and on steep grass-covered slopes in all aspects below 2600 m, small-to-medium glide-snow avalanches.

Exercising personal restraint + terminating tours early in the day are recommended. Circumvent zones below glide-cracks when possible.

### Snowpack structure

Friday night, skies will be only partly clear. A melt-freeze crust will form which is often not capable of bearing loads and will swiftly soften in the morning. The snowpack even on north-facing slopes has very few reserves of cold. With higher temperatures, moist air and solar radiation on Saturday, the snowpack will become still wetter, lose more firmness. Beneath the fresh snow from the last two days there is a weak layer of faceted crystals which led to large-sized avalanches in recent days from artificial triggerings. Also naturally triggered avalanches were observed. Weak layers more deeply embedded inside the snowpack, esp. on N/E facing slopes above 2600 m are evident. Snowdrifts only prone to triggering in isolated cases in high alpine regions, otherwise they have consolidated. At intermediate altitudes the old snow is thoroughly wet. Below 1600 m there is little snow on the ground.

### Weather

On Saturday, good visibility, sunshine, only high-altitude cloudbanks. Light to moderate southerly

#### Avalanche problems



#### Danger ratings



#### Expositions



published at 21.04.2023, 18:00 h by *Matthias Walcher*

## Avalanche report for **Saturday, 22.04.2023**

winds. At 2000 m: 3-8 degrees; at 3000 m: -3 to 0 degrees.

### Outlook

Considerable danger of wet-snow avalanches will continue on Sunday.

---

#### Avalanche problems



#### Danger ratings

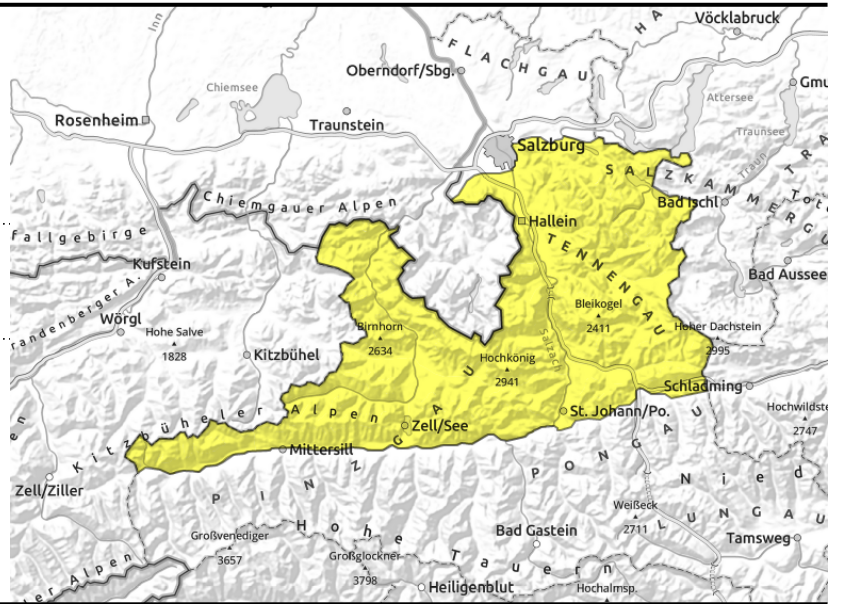


#### Expositions



# Avalanche report for Saturday, 22.04.2023

Osterhorngruppe, Gamsfeldgruppe, Untersbergstock, Steinernes Meer, Hochkönig, Hagengebirge, Göllstock, Tennengebirge, Gosaukamm, Chiemgauer Alpen, Heutal, Reiteralpe, Loferer und Leoganger Steinberge, Oberpinzgauer Grasberge, Dientner Grasberge, Pongauer Grasberge, Kitzbüheler Alpen, Glemmtal



the warmer and weaker the snowpack, the likelier are wet loose-snow avalanches

## Main danger: wet-snow avalanches

Avalanche danger is MODERATE. Small, isolated medium wet-snow avalanches are possible in the morning hours in steep zones which have not yet discharged. Likelihood of triggering will increase as the day goes on. Heightened activity is expected esp. on shady slopes. Tours should be terminated early in the day.

## Snowpack structure

Friday night, skies will be only partly clear. A melt-freeze crust will form which is often not capable of bearing loads and will swiftly soften in the morning. The snowpack even on north-facing slopes has very few reserves of cold. With higher temperatures, moist air and solar radiation on Saturday, the snowpack will become still wetter, lose more firmness. At intermediate altitudes the old snow is thoroughly wet. Below 1600 m there is little snow on the ground.

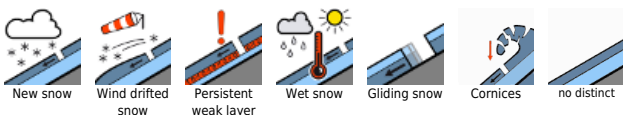
## Weather

On Saturday, good visibility, sunshine, only high-altitude cloudbanks. Light to moderate southerly winds. At 2000 m: 3-8 degrees; at 3000 m: -3 to 0 degrees.

## Outlook

Considerable danger of wet-snow avalanches will continue on Sunday.

### Avalanche problems



### Danger ratings



### Expositions

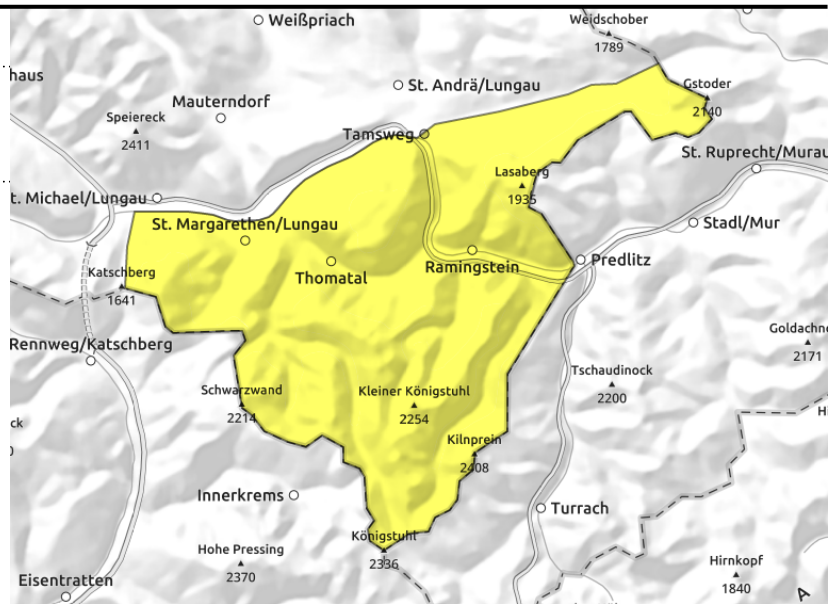


# Avalanche report for **Saturday, 22.04.2023**

## Nockberge



the warmer and weaker the snowpack, the likelier are wet loose-snow avalanches



## Loss of snowpack firmness due to higher temperatures

Avalanche danger is MODERATE.

Small, isolated medium wet-snow avalanches are possible in the morning hours in steep zones which have not yet discharged. Likelihood of triggering will increase as the day goes on. Heightened activity is expected esp. on shady slopes. Tours should be terminated early in the day.

### Snowpack structure

Friday night, skies will be cloudy, not much outgoing radiation can be expected. A melt-freeze crust will form which is often not capable of bearing loads and will swiftly soften in the morning. The snowpack even on north-facing slopes has very few reserves of cold. With higher temperatures, moist air and solar radiation on Saturday, the snowpack will become still wetter, lose more firmness. Fresh snow and drifts have settled and consolidated.

### Weather

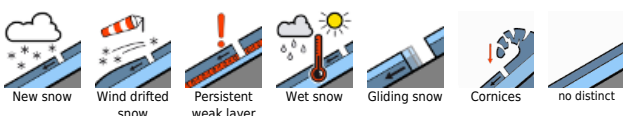
On Saturday, good visibility, sunshine, only high-altitude cloudbanks. Light to moderate southerly winds. At 2000 m: 3-8 degrees; at 3000 m: -3 to 0 degrees.

### Outlook

Considerable danger of wet-snow avalanches will continue on Sunday.

Translated by Jeffrey McCabe, [www.creativtrans.com](http://www.creativtrans.com)

### Avalanche problems



### Danger ratings



### Expositions

