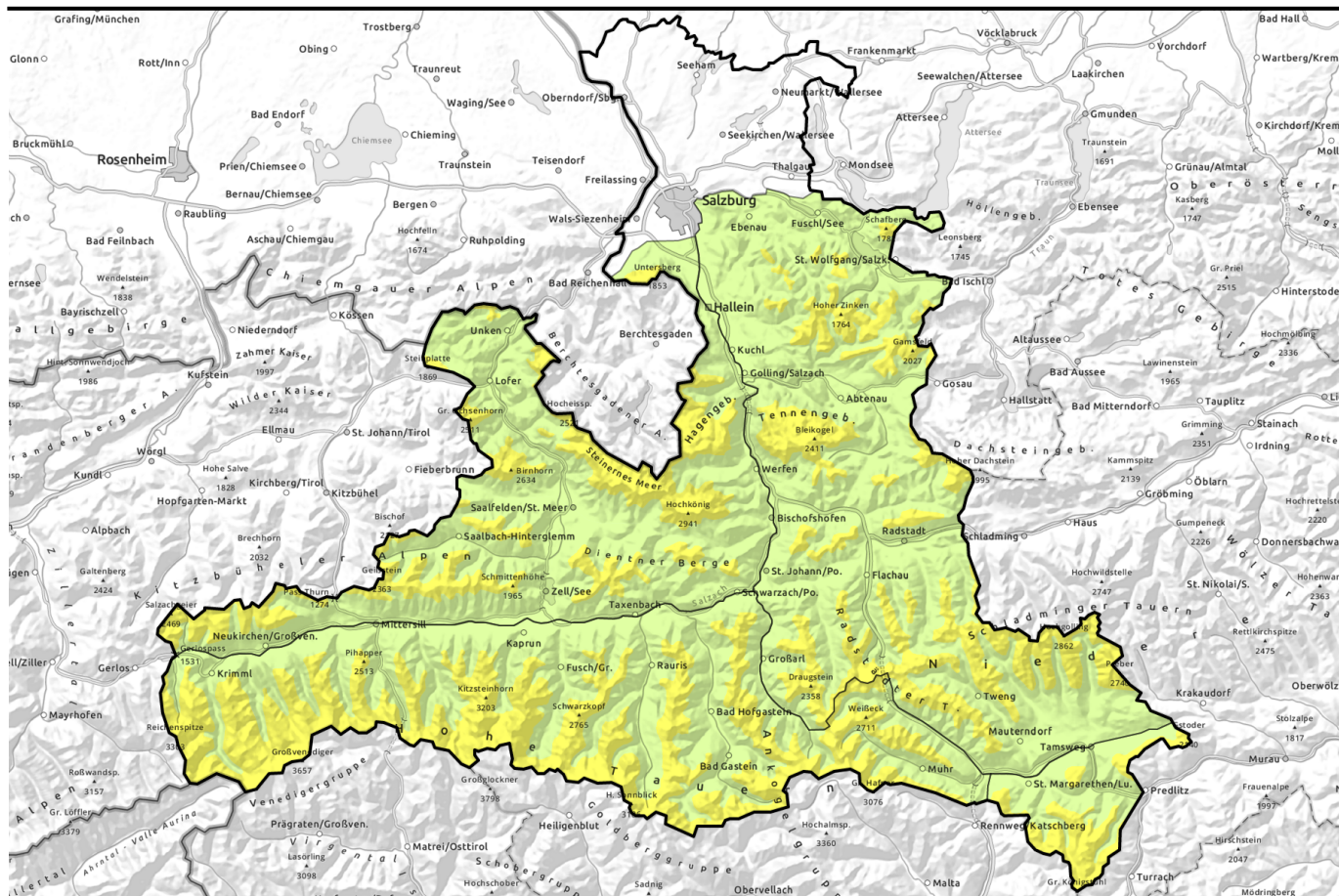


Avalanche report for Wednesday, 19.04.2023



Moist up to high altitudes. Rain up to intermediate altitudes.

	<p>1400 m Großvenedigergruppe Alpenhauptkamm, Glocknergruppe Nord, Glocknergruppe Alpenhauptkamm, Goldberggruppe Nord, Goldberggruppe Alpenhauptkamm, Ankogelgruppe, Muhr, Großvenedigergruppe Nord</p>	
	<p>1400 m Osterhorngruppe, Gamsfeldgruppe, Pongauer Grasberge, Niedere Tauern Nord, Niedere Tauern Alpenhauptkamm, Niedere Tauern Süd, Tennengebirge, Gosaukamm</p>	
	<p>1400 m Kitzbüheler Alpen, Glemmtal, Oberpinzgauer Grasberge, Dientner Grasberge, Nockberge, Chiemgauer Alpen, Heutal, Reiteralpe, Loferer und Leoganger Steinberge, Steinernes Meer, Hochkönig, Hagengebirge, Göllstock, Untersbergstock</p>	

Avalanche problems



Danger ratings





Expositions





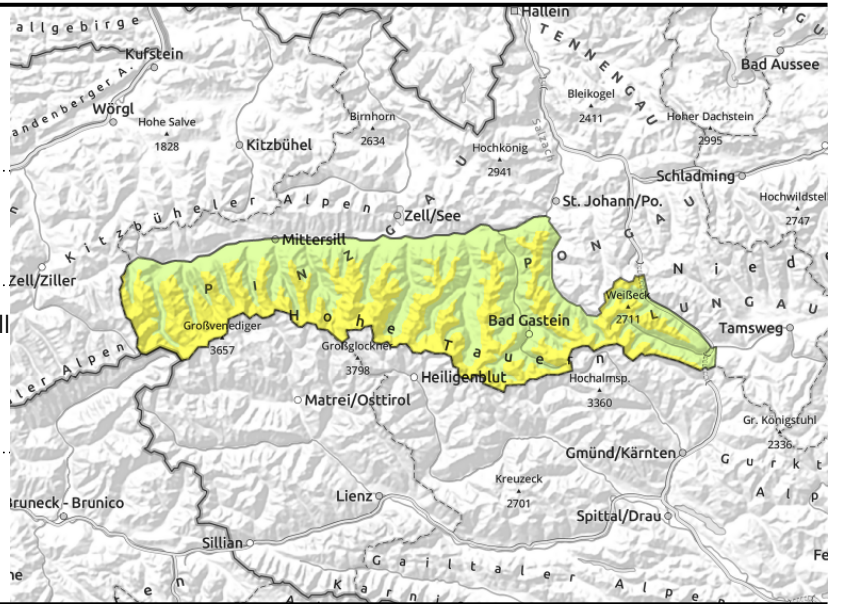
Avalanche report for Wednesday, 19.04.2023

Großvenedigergruppe Alpenhauptkamm, Glocknergruppe Nord, Glocknergruppe Alpenhauptkamm, Goldberggruppe Nord, Goldberggruppe Alpenhauptkamm, Ankogelgruppe, Muhr, Großvenedigergruppe Nord



  in extremely steep terrain small wet superficial avalanches and glide-snow avalanches on grassy slopes up to 2300 m

  AVOID high alpine snowdrifts, esp. steep ridgelines on east-facing slopes



Circumvent snowdrifts esp. at high altitudes

Avalanche danger above 1400 m is MODERATE, below that altitude danger is LOW. Snowdrift accumulations esp. on N/E facing slopes behind abrupt drops in the terrain can be triggered with increasing altitude up to high alpine regions also on south-facing slopes mostly by large additional loading. Most critical: east-facing ridgeline terrain above 2500 m and entries into steep gullies. Danger zones increase with ascending altitude. Most releases are small-to-medium, rarely large. Also the loose fresh snow can be swept away on steep slopes as a small-to-medium avalanche. Isolated naturally triggered loose and slab avalanches, esp small and medium sized in extremely steep terrain (>40°) above 2300 m, mostly wet loose-snow and glide-snow avalanches.

Snowpack structure

The fresh snow and drifts from the last few days have bonded quite well with the old snow up to 2400 m. With ascending altitude bonding deteriorates. Recent slab avalanches released from the old snowpack surface, but if further layers are swept away when a release occurs, the avalanches can then grow to large size. No further deep fractures have been observed in the old snowpack. At intermediate altitudes, rainfall on Wednesday will reduce snowpack stability, below 1400 m the snowpack is fast disappearing.

Weather

Reduced visibility due to clouds and fog, intermittent rainfall and snowfall, the snowfall level lies at 1200-1600 m. In the afternoon, showers will intensify and become heavier. Moderate northerly winds only in high alpine regions. At 2000 m: -2 degrees; at 3000 m: -8 degrees.

Outlook

On Thursday, rising southerly foehn wind will transport the fresh snow and create a snowdrift problem which will become more treacherous with ascending altitude near the Main Alpine Ridge.

Avalanche problems



Danger ratings

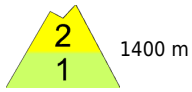
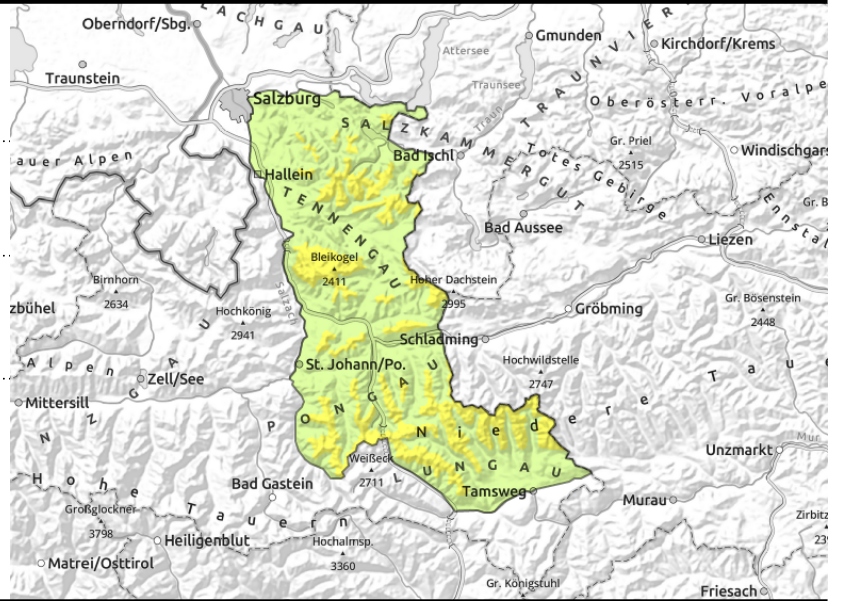


Expositions



Avalanche report for Wednesday, 19.04.2023

Osterhorngruppe, Gamsfeldgruppe, Pongauer Grasberge, Niedere Tauern Nord, Niedere Tauern Alpenhauptkamm, Niedere Tauern Süd, Tennengebirge, Gosaukamm



heed glide-snow avalanche activity

some small-to-medium wet-snow avalanches in extremely steep terrain

Wet-snow problem. Glide-snow problem.

Avalanche danger above 1400 m is MODERATE, below that altitude danger is LOW. In very-to-extremely steep terrain (>40°), naturally triggered small-to-medium sized avalanches can release, mostly wet-snow, but some dry-snow and loose-snow or glide-snow avalanches (also hillsides). Winter sports enthusiasts can trigger a slab or loose-snow avalanche by large additional loading, esp. on east-facing slopes.

Snowpack structure

Fresh snow, snowdrifts and old snow - insofar as it exists - has bonded well and settled. The snow is wet or at least moist/sticky up to high altitudes and heavy. At intermediate altitudes, rainfall on Wednesday will reduce snowpack stability, below 1400 m the snowpack is fast disappearing.

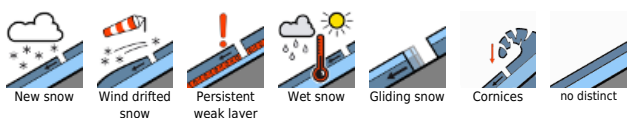
Weather

Reduced visibility due to clouds and fog, intermittent rainfall and snowfall, the snowfall level lies at 1200-1600 m. In the afternoon, showers will intensify and become heavier. Moderate northerly winds only in high alpine regions. At 2000 m: -2 degrees; at 3000 m: -8 degrees.

Outlook

On Thursday, rising southerly foehn wind will transport the fresh snow and create a snowdrift problem which will become more treacherous with ascending altitude near the Main Alpine Ridge.

Avalanche problems



Danger ratings

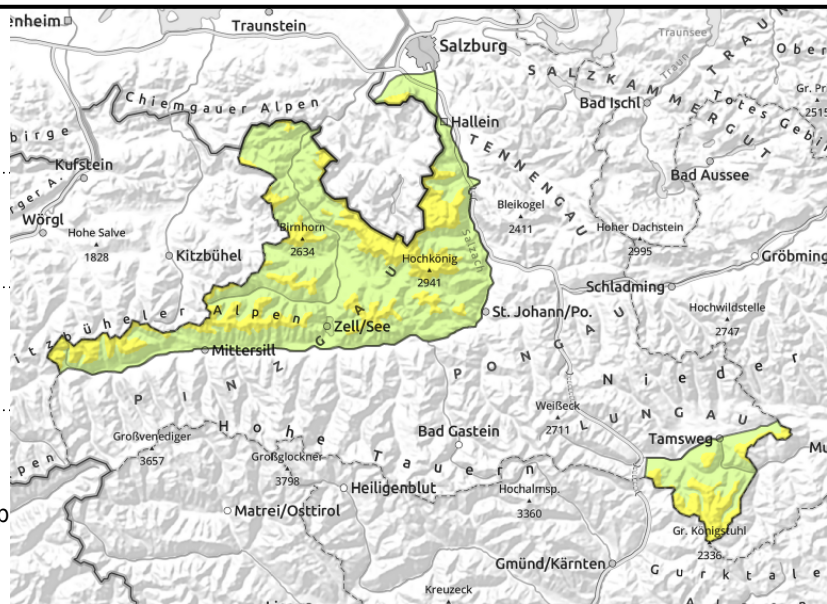



Expositions




Avalanche report for **Wednesday, 19.04.2023**

Kitzbüheler Alpen, Glemmtal, Oberpinzgauer Grasberge, Dientner Grasberge, Nockberge, Chiemgauer Alpen, Heutal, Reiteralpe, Loferer und Leoganger Steinberge, Steinernes Meer, Hochkönig, Hagengebirge, Göllstock, Untersbergstock



 heed glide-snow avalanche activity

 some small-to-medium wet-snow avalanches (loose, gliding) in very/extremely steep terrain

Wet-snow problem. Glide-snow problem.

Avalanche danger is MODERATE above 1400 m, below that altitude danger is LOW.

On extremely steep (>40°) slopes, naturally triggered avalanches can trigger in isolated cases, most are wet loose-snow or glide-snow releases. Winter sports enthusiasts can trigger a slab near ridgelines, esp. on east-facing slopes at high altitudes, or a loose-snow avalanche by large additional loading.

Snowpack structure

Fresh snow, snowdrifts and old snow - insofar as it exists - has bonded well and settled. The snow is wet or at least moist/sticky up to high altitudes and heavy. Low altitudes are bare of snow.

Weather

Reduced visibility due to clouds and fog, intermittent rainfall and snowfall, the snowfall level lies at 1200-1600 m. In the afternoon, showers will intensify and become heavier. Moderate northerly winds only in high alpine regions. At 2000 m: -2 degrees; at 3000 m: -8 degrees.

Outlook

On Thursday, rising southerly foehn wind will transport the fresh snow and create a snowdrift problem which will become more treacherous with ascending altitude near the Main Alpine Ridge.

Translated by Jeffrey McCabe, www.creativtrans.com

Avalanche problems



Danger ratings



Expositions

