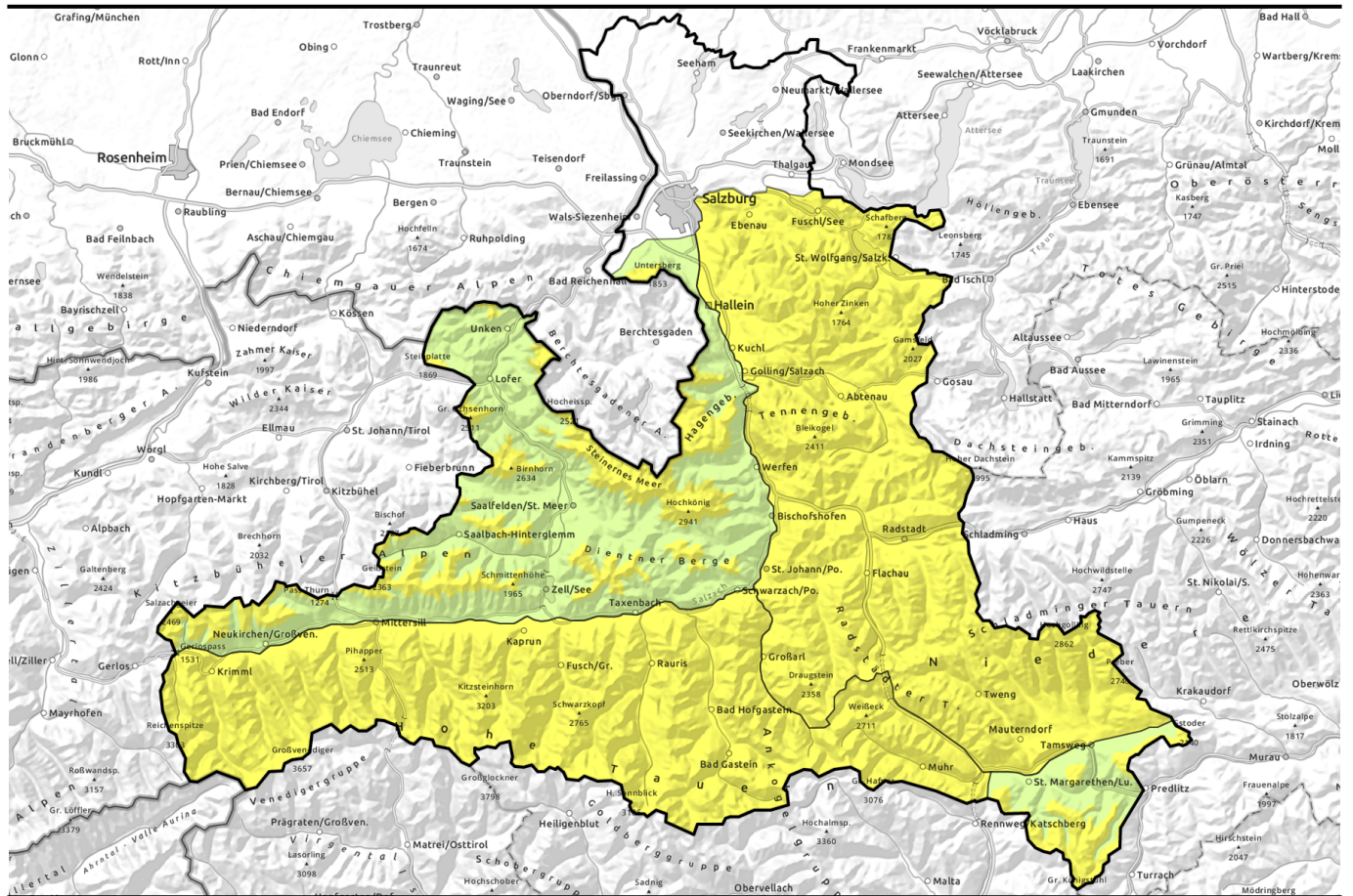


Avalanche report for Tuesday, 18.04.2023



Wet snow down below, snowdrift problem up above

	<p>Großvenedigergruppe Alpenhauptkamm, Glocknergruppe Nord, Glocknergruppe Alpenhauptkamm, Goldberggruppe Nord, Goldberggruppe Alpenhauptkamm, Ankogelgruppe, Muhr, Großvenedigergruppe Nord</p>	
	<p>Osterhorngruppe, Gamsfeldgruppe, Pongauer Grasberge, Niedere Tauern Nord, Niedere Tauern Alpenhauptkamm, Niedere Tauern Süd, Tennengebirge, Gosaukamm</p>	
	<p>1400 m Kitzbüheler Alpen, Glemmtal, Oberpinzgauer Grasberge, Dientner Grasberge, Nockberge, Chiemgauer Alpen, Heutal, Reiteralpe, Loferer und Leoganger Steinberge, Steinernes Meer, Hochkönig, Hagengebirge, Göllstock, Untersbergstock</p>	

Avalanche problems



Danger ratings



Expositions



Avalanche report for Tuesday, 18.04.2023

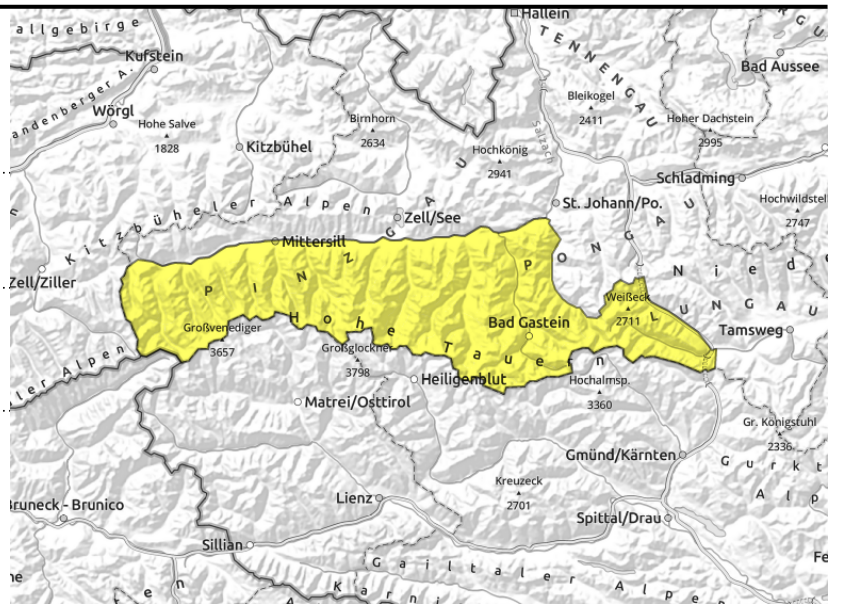
Großvenedigergruppe Alpenhauptkamm, Glocknergruppe Nord, Glocknergruppe Alpenhauptkamm, Goldberggruppe Nord, Goldberggruppe Alpenhauptkamm, Ankogelgruppe, Muhr, Großvenedigergruppe Nord



avoid fresh snowdrifts esp. on east-facing slopes



esp. in very/extremely steep terrain, fresh snow can release loosely



Circumvent snowdrifts esp. at high altitudes

Avalanche danger is MODERATE.

The snowpack has settled well over the last few days. Snowdrift accumulations esp. on N/E facing slopes behind abrupt drops in the terrain can be triggered with increasing altitude up to high alpine regions also on south-facing slopes mostly by large additional loading. Most critical: east-facing ridgeline terrain above 2500 m and entries into steep gullies. Danger zones increase with ascending altitude. Most releases are small-to-medium, rarely large. Also the loose fresh snow can be swept away on steep slopes as a small-to-medium avalanche.

Also possible: isolated naturally triggered loose and slab avalanches, esp small and medium sized in extremely steep terrain (>40°). On steep grass slopes, esp. where the ground was bare, below 2400 m, naturally triggered glide-snow avalanches are possible, in medium size.

Snowpack structure

The fresh snow and drifts from the last few days have bonded quite well with the old snow up to 2400 m. With ascending altitude bonding deteriorates. In places there are expansively metamorphosed (faceted) layers bordering on melt-freeze crusts in the uppermost part of the snowpack; these are unlikely to trigger, but if further layers are swept away when a release occurs, the avalanches can then grow to large size.

At low altitudes there is hardly any snow on the ground, up to 2600 m the snow is moist and sticky.

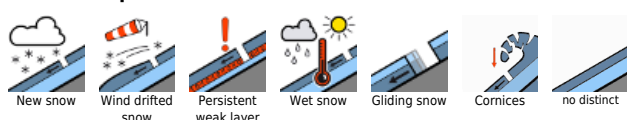
Weather

On Tuesday, low lying clouds will reduce visibility, intermitten minor snowfall (below 1400-1700m as sleet or rainfall). Winds negligible from the north. At 2000 m: -1 degree; at 3000 m: -7 degrees.

Outlook

No significant change

Avalanche problems



Danger ratings

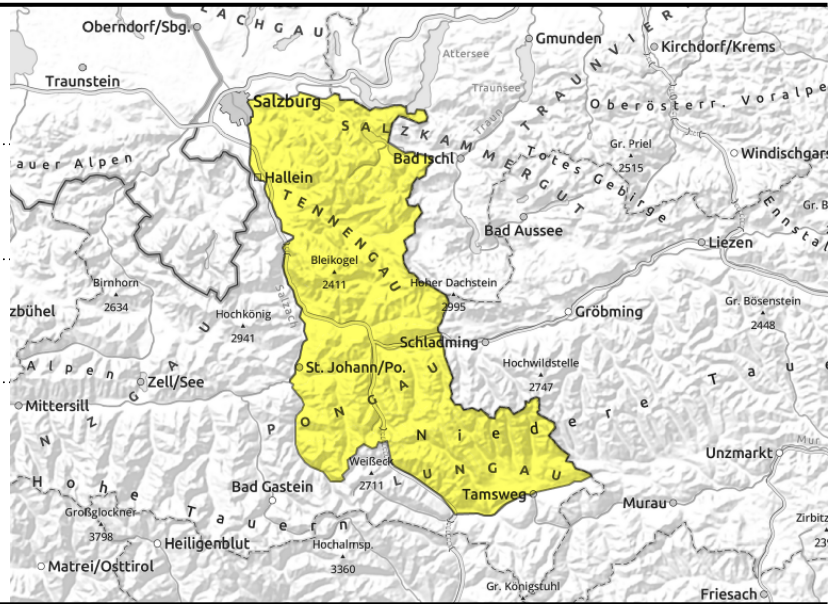


Expositions



Avalanche report for Tuesday, 18.04.2023

Osterhorngruppe, Gamsfeldgruppe, Pongauer Grasberge, Niedere Tauern Nord, Niedere Tauern Alpenhauptkamm, Niedere Tauern Süd, Tennengebirge, Gosaukamm



heed glide-snow avalanche activity



some small-to-medium wet-snow avalanches in extremely steep terrain

Wet-snow problem. Glide-snow problem.

Avalanche danger is MODERATE.

In very-to-extremely steep terrain ($>40^\circ$), naturally triggered small-to-medium sized avalanches can release, mostly wet-snow, but some dry-snow and loose-snow or glide-snow avalanches (also hillsides). Winter sports enthusiasts can trigger a slab or loose-snow avalanche by large additional loading, esp. on east-facing slopes.

Snowpack structure

Fresh snow, snowdrifts and old snow - insofar as it exists - has bonded well and settled. The snow is wet or at least moist/sticky up to high altitudes and heavy.

Weather

On Tuesday, low lying clouds will reduce visibility, intermitten minor snowfall (below 1400-1700m as sleet or rainfall). Winds negligible from the north. At 2000 m: -1 degree; at 3000 m: -7 degrees.

Outlook

No significant change - stuck in the brew of fog.

Avalanche problems



Danger ratings

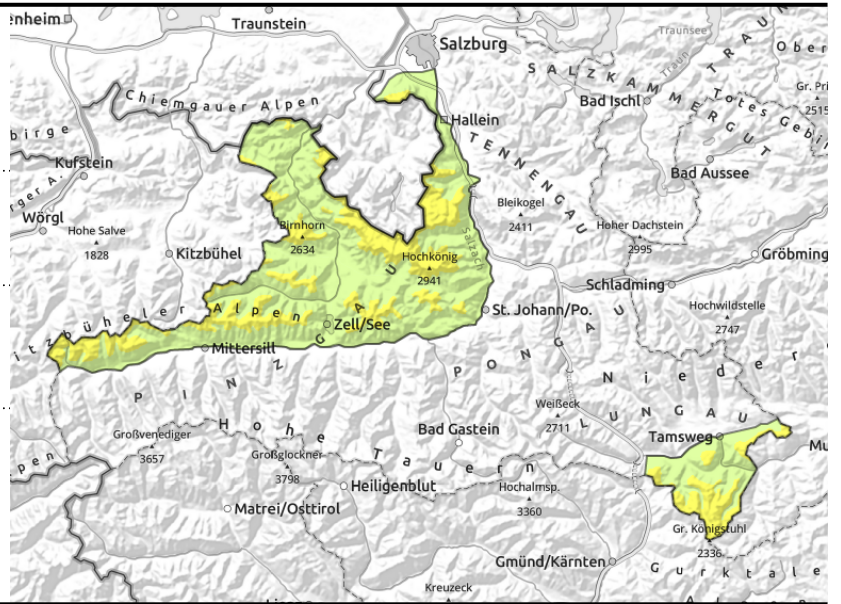


Expositions



Avalanche report for Tuesday, 18.04.2023

Kitzbüheler Alpen, Glemmtal, Oberpinzgauer Grasberge, Dientner Grasberge, Nockberge, Chiemgauer Alpen, Heutal, Reiteralpe, Loferer und Leoganger Steinberge, Steinernes Meer, Hochkönig, Hagengebirge, Göllstock, Untersbergstock



heed glide-snow avalanche activity

some small-to-medium wet-snow avalanches in extremely steep terrain

Wet-snow problem. Glide-snow problem.

Avalanche danger is MODERATE above 1400 m, below that altitude danger is LOW.

On extremely steep (>40°) slopes, naturally triggered avalanches can trigger in isolated cases, most are wet loose-snow or glide-snow releases. Winter sports enthusiasts can trigger a slab near ridgelines, esp. on east-facing slopes at high altitudes, or a loose-snow avalanche by large additional loading.

Snowpack structure

Fresh snow, snowdrifts and old snow - insofar as it exists - has bonded well and settled. The snow is wet or at least moist/sticky up to high altitudes and heavy. Low altitudes have bare ground.

Weather

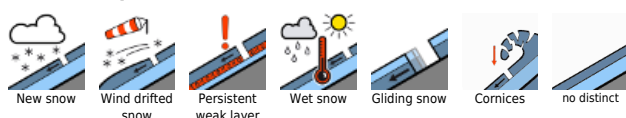
On Tuesday, low lying clouds will reduce visibility, intermitten minor snowfall (below 1400-1700m as sleet or rainfall). Winds negligible from the north. At 2000 m: -1 degree; at 3000 m: -7 degrees.

Outlook

No significant change on Wednesday

Translated by Jeffrey McCabe, www.creativtrans.com

Avalanche problems



Danger ratings



Expositions

