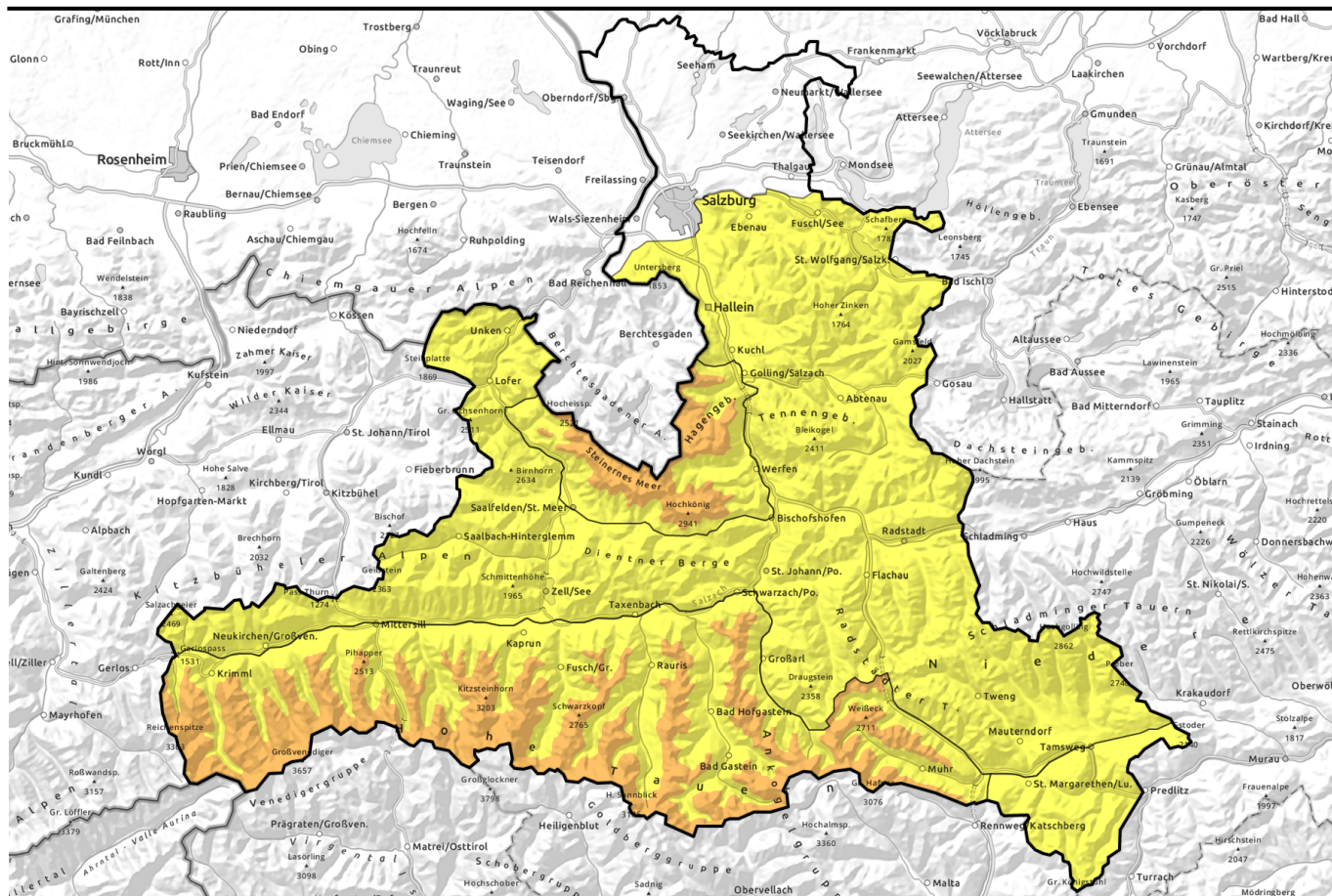


Avalanche report for Monday, 17.04.2023



Wet snow down below. Snowdrift problem up above.

	<p>2400 m Großenedigergruppe Alpenhauptkamm, Glocknergruppe Nord, Glocknergruppe Alpenhauptkamm, Goldberggruppe Nord, Goldberggruppe Alpenhauptkamm, Ankogelgruppe, Muhr, Steinernes Meer, Hochkönig, Hagengebirge, Göllstock, Großenedigergruppe Nord</p>	
	<p>Chiemgauer Alpen, Heutal, Reiteralpe, Osterhorngruppe, Gamsfeldgruppe, Untersbergstock, Pongauer Grasberge, Dientner Grasberge, Kitzbüheler Alpen, Glemmtal, Niedere Tauern Nord, Niedere Tauern Alpenhauptkamm, Niedere Tauern Süd, Tennengebirge, Gosaukamm, Loferer und Leoganger Steinberge, Oberpinzgauer Grasberge</p>	
	<p>Nockberge</p>	

Avalanche problems



Danger ratings

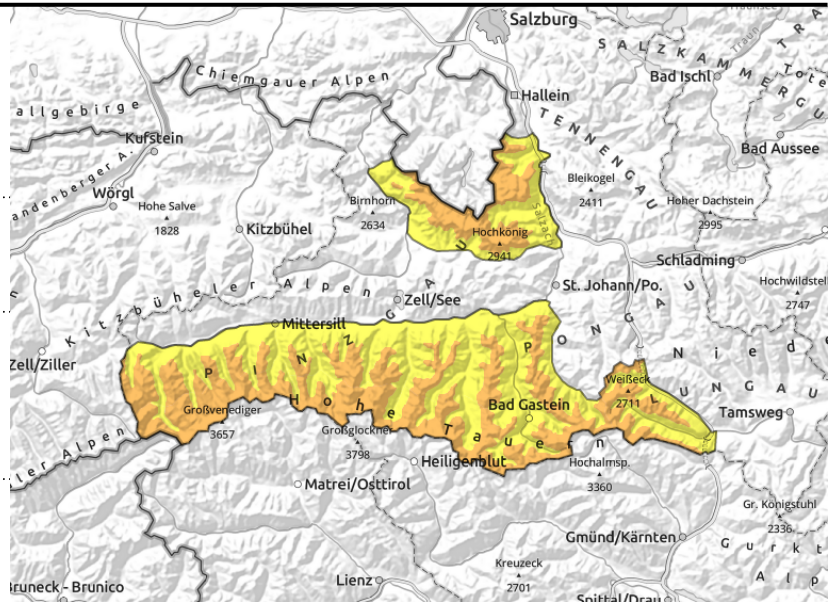


Expositions



Avalanche report for Monday, 17.04.2023

Großvenedigergruppe Alpenhauptkamm, Glocknergruppe Nord, Glocknergruppe Alpenhauptkamm, Goldberggruppe Nord, Goldberggruppe Alpenhauptkamm, Ankogelgruppe, Muhr, Steinernes Meer, Hochkönig, Hagengebirge, Göllstock, Großvenedigergruppe Nord



avoid fresh snowdrifts, esp. on east-facing slopes; snowdrifts also on south-facing slopes in high alpine regions



esp. in very/extremely steep terrain, fresh snow can release (loose, slab, gliding) - small to medium sized

Circumvent snowdrifts esp. at high altitudes

Avalanche danger above 2400 m is CONSIDERABLE, below that altitude danger is MODERATE. Snowdrift accumulations esp. on N/E facing slopes behind abrupt drops in the terrain can be easily triggered with increasing altitude up to high alpine regions also on south-facing slopes. Slabs small-to-medium, also large in isolated cases. Danger zones increase with ascending altitude. Also possible: isolated naturally triggered loose and slab avalanches, esp small and medium sized in extremely steep terrain. On steep grass slopes, esp. where the ground was bare, below 2400 m, naturally triggered glide-snow avalanches are possible, in medium size.

Snowpack structure

The fresh snow and drifts from the last few days have bonded quite well with the old snow up to 2400 m. With ascending altitude bonding deteriorates. In places there are expansively metamorphosed (faceted) layers bordering on melt-freeze crusts in the uppermost part of the snowpack; these are unlikely to trigger, but if further layers are swept away when a release occurs, the avalanches can then grow to large size.

At low altitudes there is hardly any snow on the ground, up to 2400 m the snow is moist and sticky.

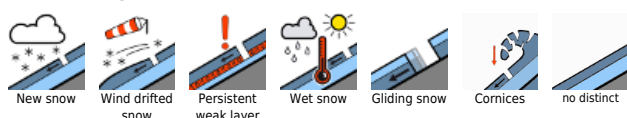
Weather

On Monday, poor visibility, clouds and fog will dominate. Over midday some bright intervals and sunshine are possible, diffuse radiation will be intense, a bit of rainfall or snowfall is possible, snowfall level at 1500 m. At 2000 m: -2 degrees; at 3000 m: -8 degrees. Winds will be light, moderate northerly winds on the Main Alpine Ridge will be noticeable.

Outlook

No significant change to start with. We are waiting for nights of clear skies and firn snow.

Avalanche problems



Danger ratings

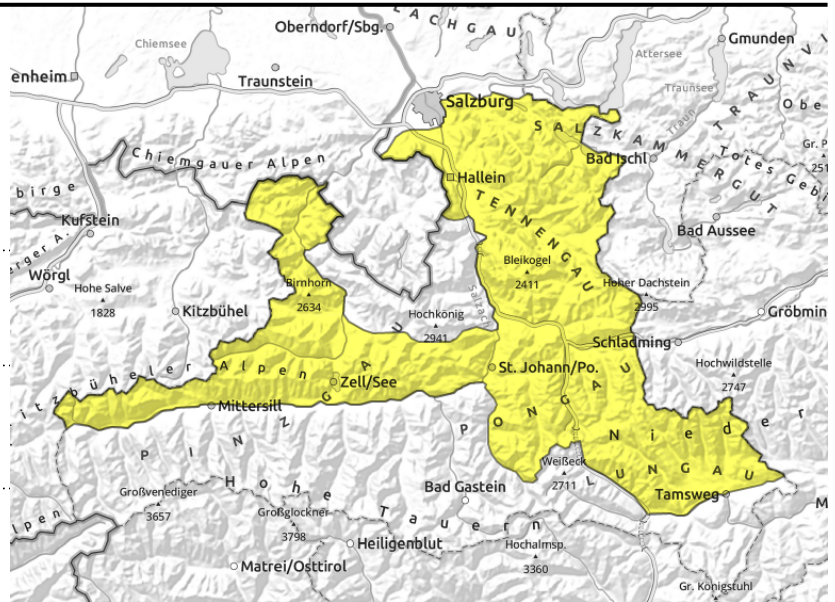


Expositions



Avalanche report for **Monday, 17.04.2023**

Chiemgauer Alpen, Heutal, Reiteralpe, Osterhorngruppe, Gamsfeldgruppe, Untersbergstock, Pongauer Grasberge, Dientner Grasberge, Kitzbüheler Alpen, Glemmtal, Niedere Tauern Nord, Niedere Tauern Alpenhauptkamm, Niedere Tauern Süd, Tennengebirge, Gosaukamm, Loferer und Leoganger Steinberge, Oberpinzgauer Grasberge



heed glide-snow avalanche activity



some small-to-medium wet-snow avalanches in extremely steep terrain

Wet-snow problem. Glide-snow problem.

Avalanche danger is MODERATE.

In very-to-extremely steep terrain (>40°), naturally triggered small-to-medium sized avalanches can release, mostly wet-snow, but some dry-snow and loose-snow or glide-snow avalanches (also hillsides). Winter sports enthusiasts can trigger a slab or loose-snow avalanche by large additional loading, esp. on east-facing slopes.

Snowpack structure

Fresh snow, snowdrifts and old snow - insofar as it exists - has bonded well and settled. The snow is wet or at least moist/sticky up to high altitudes and heavy.

Weather

On Monday, poor visibility, clouds and fog will dominate. Over midday some bright intervals and sunshine are possible, diffuse radiation will be intense, a bit of rainfall or snowfall is possible, snowfall level at 1500 m. At 2000 m: -2 degrees; at 3000 m: -8 degrees. Winds will be light, moderate northerly winds on the Main Alpine Ridge will be noticeable.

Outlook

No significant change to start with. We are waiting for nights of clear skies and firm snow.

Avalanche problems



Danger ratings



Expositions



Avalanche report for Monday, 17.04.2023

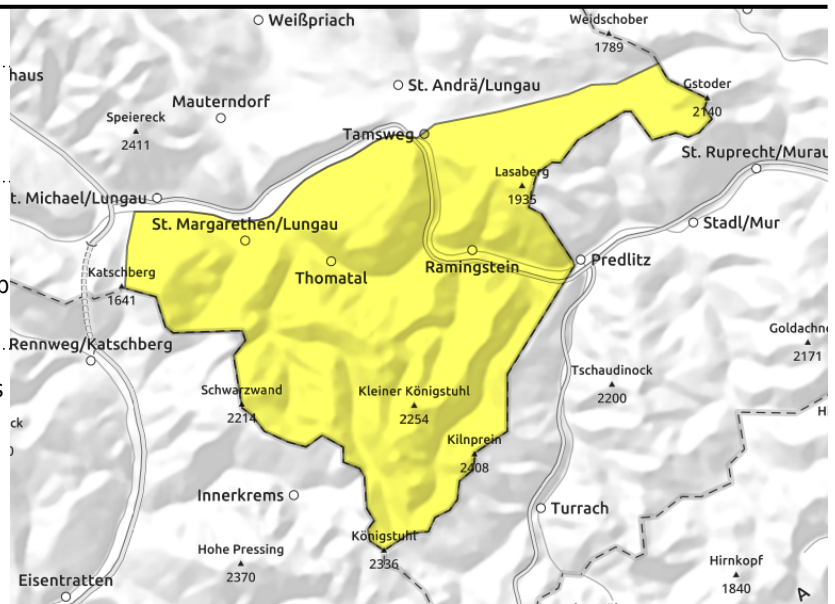
Nockberge



some small-to-medium wet-snow avalanches (loose, gliding) in very/extremely steep terrain



avoid fresh ridgeline snowdrifts



Wet-snow problem. Heed ridgeline snowdrifts.

Avalanche danger is MODERATE.

Above 2000 m the freshly generated ridgeline snowdrift accumulations can be triggered by the weight of one sole skier. Slabs remain small-sized.

Naturally triggered wet-snow (loose and slab) can trigger, mostly small-to-medium. Also glide-snow avalanches are about to increase.

Snowpack structure

Westerly-to-northerly winds will generate snowdrifts. The fracture points generally are found in the fresh snow just below the slab. Weak layers in the old snow are rare. At intermediate altitudes and on some sunny slopes the fresh snow fell on bare ground, where increasingly frequent glide-snow avalanches can be expected.

Weather

Generally good visibility, some sunshine, northerly winds at 40 km/h. At 2000 m: -1 degree.

Outlook

Little change expected.

Translated by Jeffrey McCabe, www.creativtrans.com

Avalanche problems



Danger ratings



Expositions

