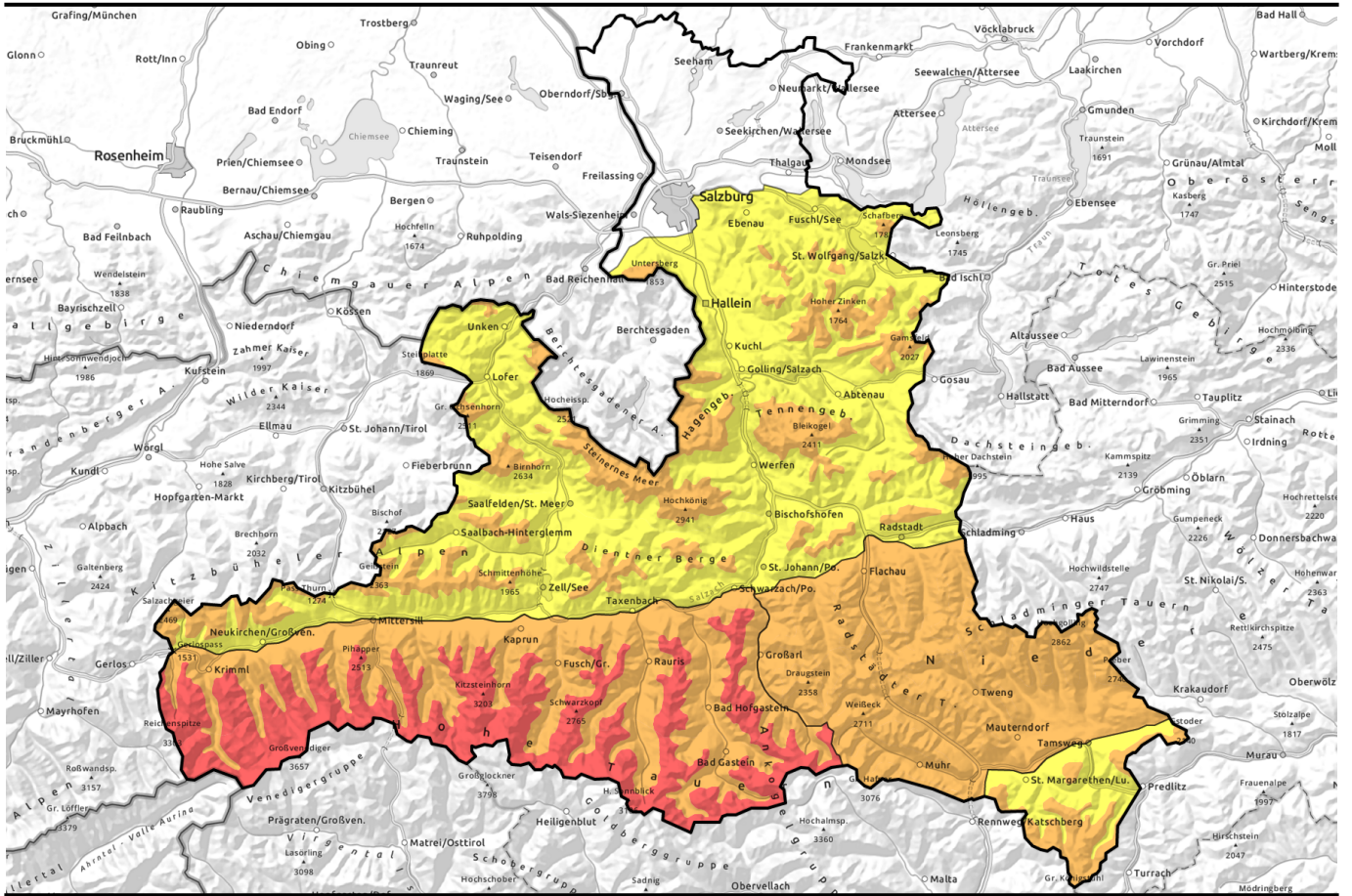


Avalanche report for Friday, 14.04.2023



Regionally HIGH avalanche danger

| | | | |
|--|-------------------|--|--|
| | <p>2400 m</p> | <p>Großenedigergruppe Nord, Großenedigergruppe Alpenhauptkamm, Glocknergruppe Nord, Glocknergruppe Alpenhauptkamm, Goldberggruppe Nord, Goldberggruppe Alpenhauptkamm</p> | |
| | | <p>Niedere Tauern Nord, Niedere Tauern Alpenhauptkamm, Niedere Tauern Süd, Ankogelgruppe, Muhr</p> | |
| | <p>forestline</p> | <p>Chiemgauer Alpen, Heutal, Reiteralpe, Loferer und Leoganger Steinberge, Steinernes Meer, Hochkönig, Hagengebirge, Göllstock, Osterhorngruppe, Gamsfeldgruppe, Untersbergstock, Tennengebirge, Gosaukamm, Pongauer Grasberge, Dientner Grasberge, Kitzbüheler Alpen, Glemmtal, Oberpinzgauer Grasberge</p> | |
| | <p>1600 m</p> | <p>Nockberge</p> | |

Avalanche problems



Danger ratings

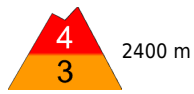




Expositions

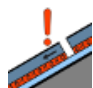



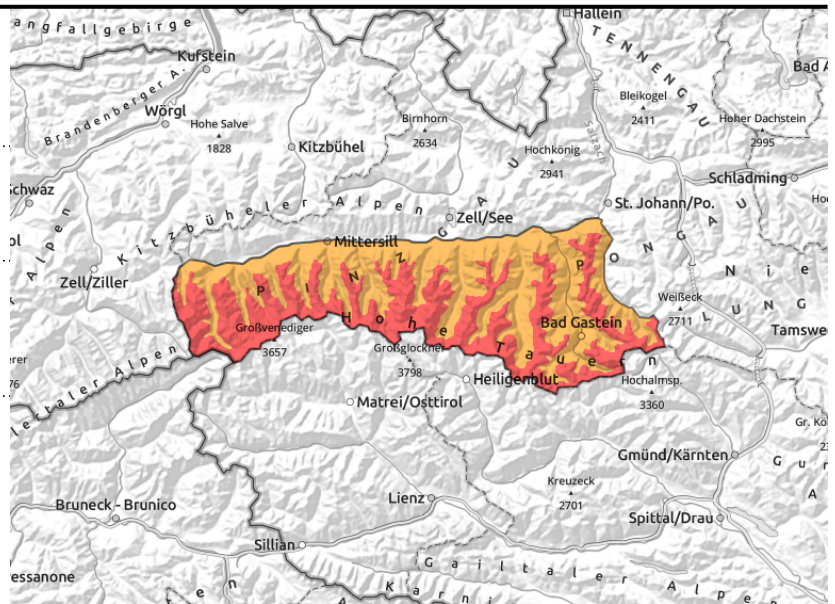
Avalanche report for Friday, 14.04.2023

Großvenedigergruppe Nord, Großvenedigergruppe Alpenhauptkamm, Glocknergruppe Nord, Glocknergruppe Alpenhauptkamm, Goldberggruppe Nord, Goldberggruppe Alpenhauptkamm



  avoid exposed terrain, give the fresh snow a chance to settle and consolidate

  existing weak layers will be further weakened by the fresh fallen snow; large naturally triggered avalanches possible



Critical avalanche situation for winter sports enthusiasts

Avalanche danger above 2400 m is HIGH, below that altitude danger is CONSIDERABLE. Fresh snow and freshly generated snowdrifts at high altitude (>2000m) are easily triggered in some places in all aspects, also naturally. Avalanches mostly medium, but if they fracture down deep they can grow to large size, particularly above 2600 m. Danger zones are not visible to the naked eye, increase with ascending altitude. Highly critical conditions for backcountry tours. In addition, on previously bare grassy slopes below 2400 m, the danger of glide-snow avalanches will increase. Isolated small-to-medium sized naturally triggered glide-snow avalanches are possible.

Snowpack structure

From the moment the precipitation started on Wednesday night until the tapering off on Friday afternoon, up to 60-80 cm of fresh snow is expected, snowfall level at 800-1000 m, in places as much as 100 cm. On Friday, strong NW winds will set in, transport the cold, loose snow and deposit drifts atop unbonded snow on leeward slopes. With the weight of fresh snow, the trigger-sensitivity of the snowpack will increase. Bonding is slow. Above 2600 m there are expansively metamorphosed (faceted) layers bordering melt-freeze crusts inside the old snowpack, further weakened by the fresh snow. At intermediate altitudes on sunny slopes at high altitudes the fresh snow fell on bare ground. There, on grassy slopes, gliding snow masses can be expected.

Weather

Also on Friday, poor visibility and heavy snowfall can be expected. Less snowfall in the Lungau, everywhere else snowfall will be heavy, particularly in the Northern Alps. It will ease in the afternoon. Winds moderate to brisk, stronger in Tauern and Nockberge, from W/NW. At 2000 m: -5 degrees; at 3000 m: -12 degrees.

Outlook

The situation will quiet down only slowly. Warmer temperatures and solar radiation will cause numerous naturally triggered small-to-medium loose-snow avalanches and glide-snow avalanches in intermediate terrain. Through improved bonding of fresh snow to snowpack, the likelihood of slab avalanches triggering will be higher for a short time.

Avalanche problems



Danger ratings



Expositions



Avalanche report for Friday, 14.04.2023

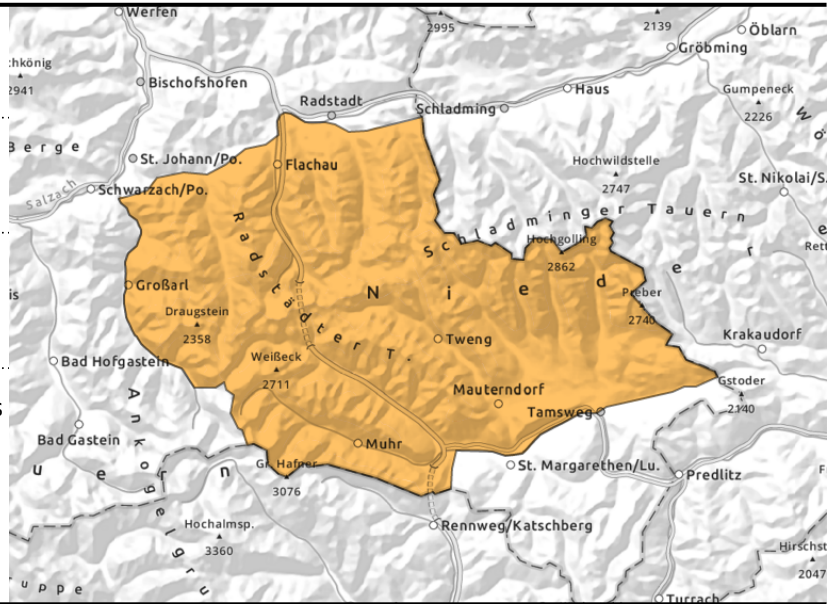
Niedere Tauern Nord, Niedere Tauern Alpenhauptkamm, Niedere Tauern Süd, Ankogelgruppe, Muhr



avoid exposed terrain, give the fresh snow a chance to settle and consolidate



medium glide-snow avalanches can trigger naturally on steep grassy slopes



Lots of fresh snow + wind: unfavourable situation

Avalanche danger is **CONSIDERABLE**, at the upper border of **CONSIDERABLE**.

Fresh snow and freshly generated snowdrifts at high altitude (>2000m) are easily triggered in some places in all aspects, also naturally. Avalanches mostly medium, but if they fracture down deep they can grow to large size, particularly above 2600 m. Danger zones are not visible to the naked eye, increase with ascending altitude. Highly dangerous conditions for backcountry tours.

In addition, on previously bare grassy slopes below 2400 m, the danger of glide-snow avalanches will increase. Isolated small-to-medium sized naturally triggered glide-snow avalanches are possible.

Snowpack structure

From the moment the precipitation started on Wednesday night until the tapering off on Friday afternoon, up to 50-70 cm of fresh snow is expected, snowfall level at 800-1000 m. On Friday, strong NW winds will set in (storm-strength in Lungau), transport the cold, loose snow and deposit drifts atop unbonded snow on leeward slopes.

With the weight of fresh snow, the trigger-sensitivity of the snowpack will increase. Bonding is slow. Above 2600 m there are expansively metamorphosed (faceted) layers bordering melt-freeze crusts inside the old snowpack, further weakened by the fresh snow. At intermediate altitudes on sunny slopes at high altitudes the fresh snow fell on bare ground. There, on grassy slopes, gliding snow masses can be expected.

Weather

Also on Friday, poor visibility and heavy snowfall can be expected. Less snowfall in the Lungau, everywhere else snowfall will be heavy, particularly in the Northern Alps. It will ease in the afternoon. Winds moderate to brisk, stronger in Tauern and Nockberge, from W/NW. At 2000 m: -5 degrees; at 3000 m: -12 degrees.

Outlook

Warmer temperatures and solar radiation will cause numerous naturally triggered small-to-medium loose-snow avalanches and glide-snow avalanches in intermediate terrain. Through improved bonding of fresh snow to snowpack, the likelihood of slab avalanches triggering will be higher for a short time.

Avalanche problems



Danger ratings

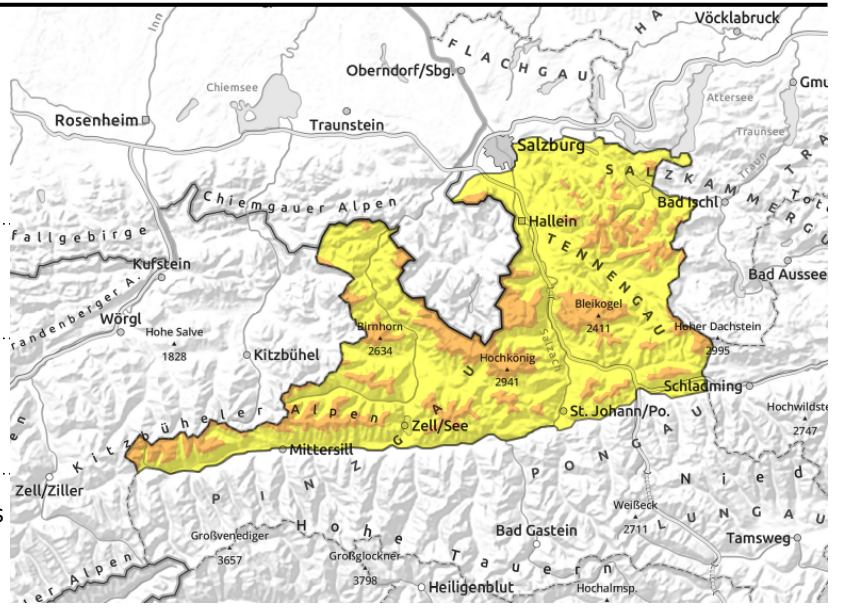


Expositions



Avalanche report for Friday, 14.04.2023

Chiemgauer Alpen, Heutal, Reiteralpe, Loferer und Leoganger Steinberge, Steinernes Meer, Hochkönig, Hagengebirge, Göllstock, Osterhorngruppe, Gamsfeldgruppe, Untersbergstock, Tennengebirge, Gosaukamm, Pongauer Grasberge, Dientner Grasberge, Kitzbüheler Alpen, Glemmtal, Oberpinzgauer Grasberge



forestline



avoid exposed terrain, give the fresh snow a chance to settle and consolidate



medium glide-snow avalanches can trigger naturally on steep grassy slopes

Lots of fresh snow: considerable danger

Avalanche danger is CONSIDERABLE above the treeline, below that altitude danger is MODERATE. Fresh snow and freshly generated snowdrifts above the treeline are easily triggered in some places in all aspects, also naturally, esp in gullies, bowls, behind abrupt drops in the terrain. Danger zones are not visible to the naked eye, increase with ascending altitude. Unfavourable conditions for backcountry tours.

In addition, on previously bare grassy slopes below 2400 m, the danger of glide-snow avalanches will increase. Isolated small-to-medium sized naturally triggered glide-snow avalanches are possible.

Snowpack structure

From the moment the precipitation started on Wednesday night until the tapering off on Friday afternoon, up to 40-60 cm of fresh snow is expected, snowfall level at 800-1000 m. On Friday, strong NW winds will set in, transport the cold, loose snow and deposit drifts atop unbonded snow on leeward slopes.

With the weight of fresh snow, the trigger-sensitivity of the snowpack will increase. Bonding is slow. Above 2600 m there are expansively metamorphosed (faceted) layers bordering melt-freeze crusts inside the old snowpack, further weakened by the fresh snow. At intermediate altitudes on sunny slopes at high altitudes the fresh snow fell on bare ground. There, on grassy slopes, gliding snow masses can be expected.

Weather

Also on Friday, poor visibility and heavy snowfall can be expected. Less snowfall in the Lungau, everywhere else snowfall will be heavy, particularly in the Northern Alps. It will ease in the afternoon. Winds moderate to brisk, stronger in Tauern and Nockberge, from W/NW. At 2000 m: -5 degrees; at 3000 m: -12 degrees.

Outlook

Warmer temperatures and solar radiation will cause numerous naturally triggered small-to-medium loose-snow avalanches and glide-snow avalanches in intermediate terrain. Through improved bonding of fresh snow to snowpack, the likelihood of slab avalanches triggering will be higher for a short time.

Avalanche problems



Danger ratings

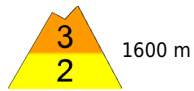


Expositions



Avalanche report for Friday, 14.04.2023

Nockberge



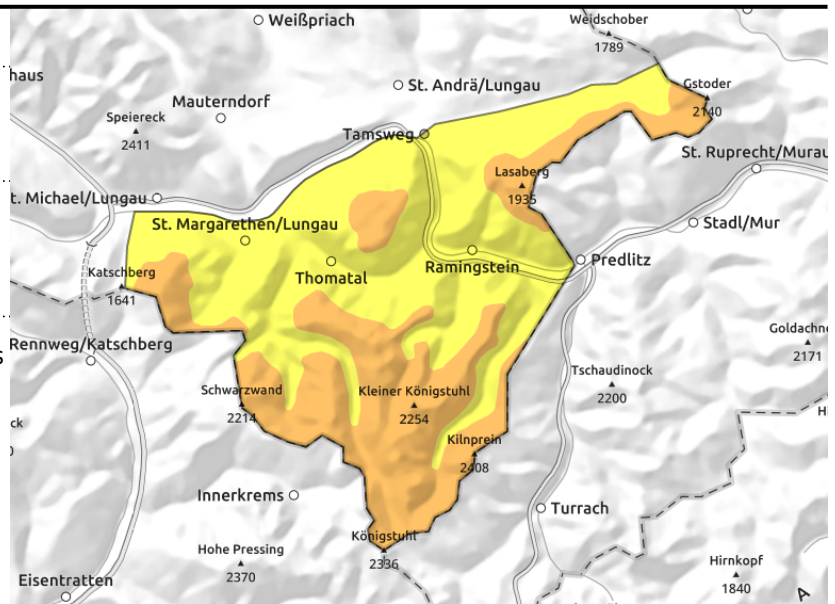
1600 m



select conservative terrain while the fresh drifts are settling and consolidating



medium glide-snow avalanches can trigger naturally on steep grassy slopes



Trigger-sensitive fresh snow plus wind

Further increase in avalanche danger due to lots of fresh snow and wind. Fresh snow and freshly generated snowdrifts above the treeline are easily triggered in some places in all aspects, also naturally, esp in gullies, bowls, behind abrupt drops in the terrain. Danger zones are not visible to the naked eye, increase with ascending altitude. Experience and restraint are imperative on backcountry tours.

As the snowfall tapers off, naturally triggered loose-snow avalanches are likely on extremely steep (>40°) slopes, particularly in case of extensive bright intervals. In addition, on previously bare grassy slopes below 2400 m, the danger of glide-snow avalanches will increase.

Snowpack structure

All in all, 30-40 cm of fresh snow is anticipated above 1600 m. Strong, often stormy, NW winds will transport the fresh snow over widespread areas. Bonding is insufficient. At intermediate altitudes on sunny slopes at high altitudes the fresh snow fell on bare ground. There, on grassy slopes, gliding snow masses can be expected.

Weather

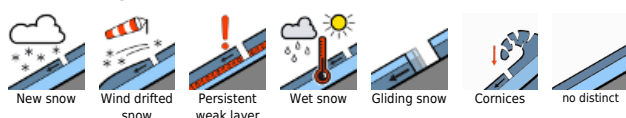
Also on Friday, poor visibility and heavy snowfall can be expected. Less snowfall in the Lungau, everywhere else snowfall will be heavy, particularly in the Northern Alps. It will ease in the afternoon. Winds moderate to brisk, stronger in Tauern and Nockberge, from W/NW. At 2000 m: -5 degrees; at 3000 m: -12 degrees.

Outlook

Danger of dry-snow avalanches will gradually decrease, but naturally triggered loose-snow and glide-snow avalanches can still be expected.

Translated by Jeffrey McCabe, www.creativtrans.com

Avalanche problems



Danger ratings



Expositions

