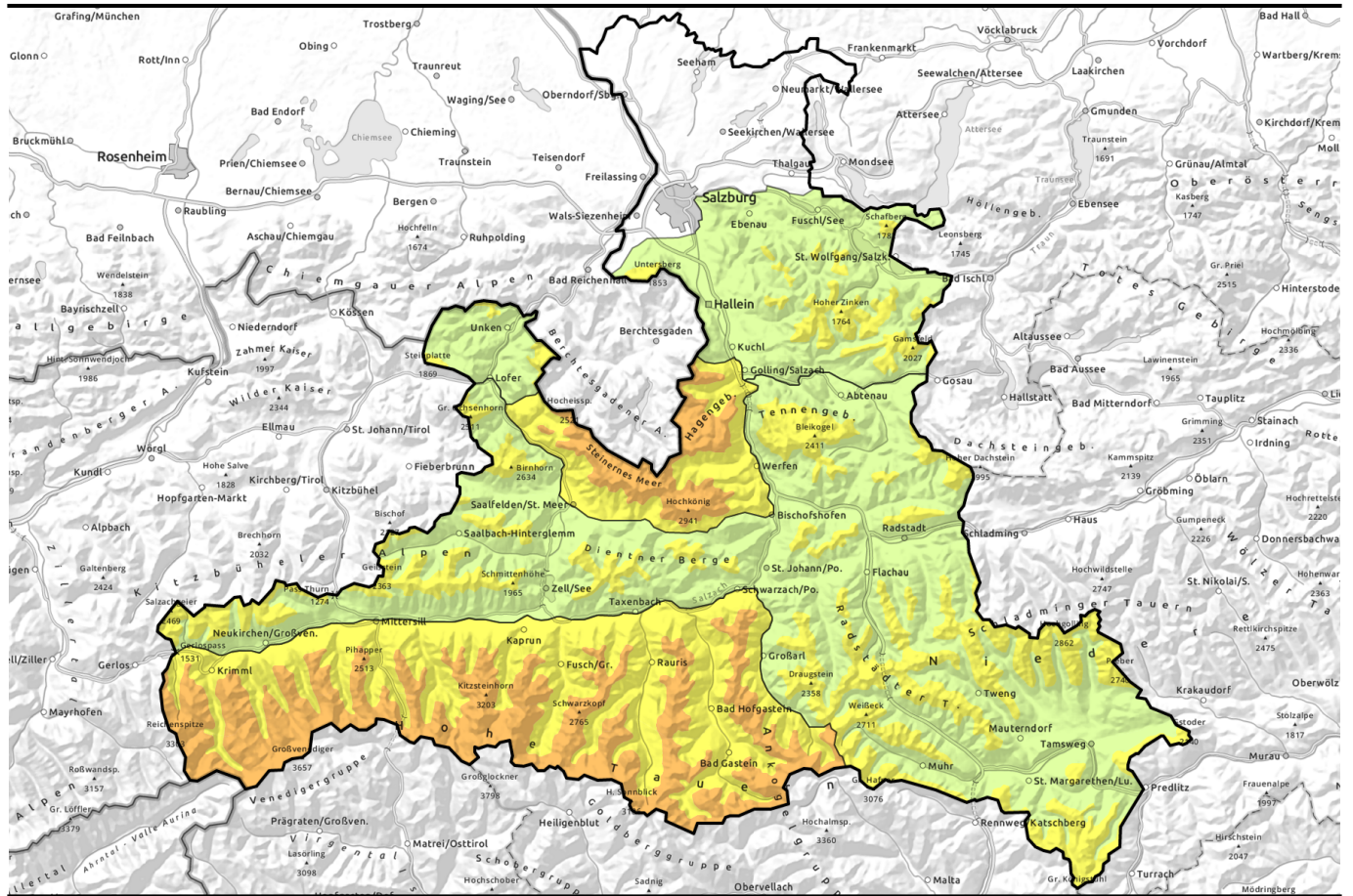


Avalanche report for Thursday, 13.04.2023, morning



Significant increase in avalanche danger

	<p>2000 m Großenedigergruppe Nord, Großenedigergruppe Alpenhauptkamm, Glocknergruppe Nord, Glocknergruppe Alpenhauptkamm, Goldberggruppe Nord, Goldberggruppe Alpenhauptkamm, Steinernes Meer, Hochkönig, Hagengebirge, Göllstock</p>	
	<p>2000 m Kitzbüheler Alpen, Glemmtal, Oberpinzgauer Grasberge, Loferer und Leoganger Steinberge, Tennengebirge, Gosaukamm, Niedere Tauern Alpenhauptkamm, Niedere Tauern Nord, Niedere Tauern Süd, Ankogelgruppe, Muhr, Nockberge, Dientner Grasberge, Pongauer Grasberge</p>	
	<p>forestline Osterhorngruppe, Gamsfeldgruppe, Untersbergstock, Chiemgauer Alpen, Heutal, Reiteralpe</p>	

Avalanche problems



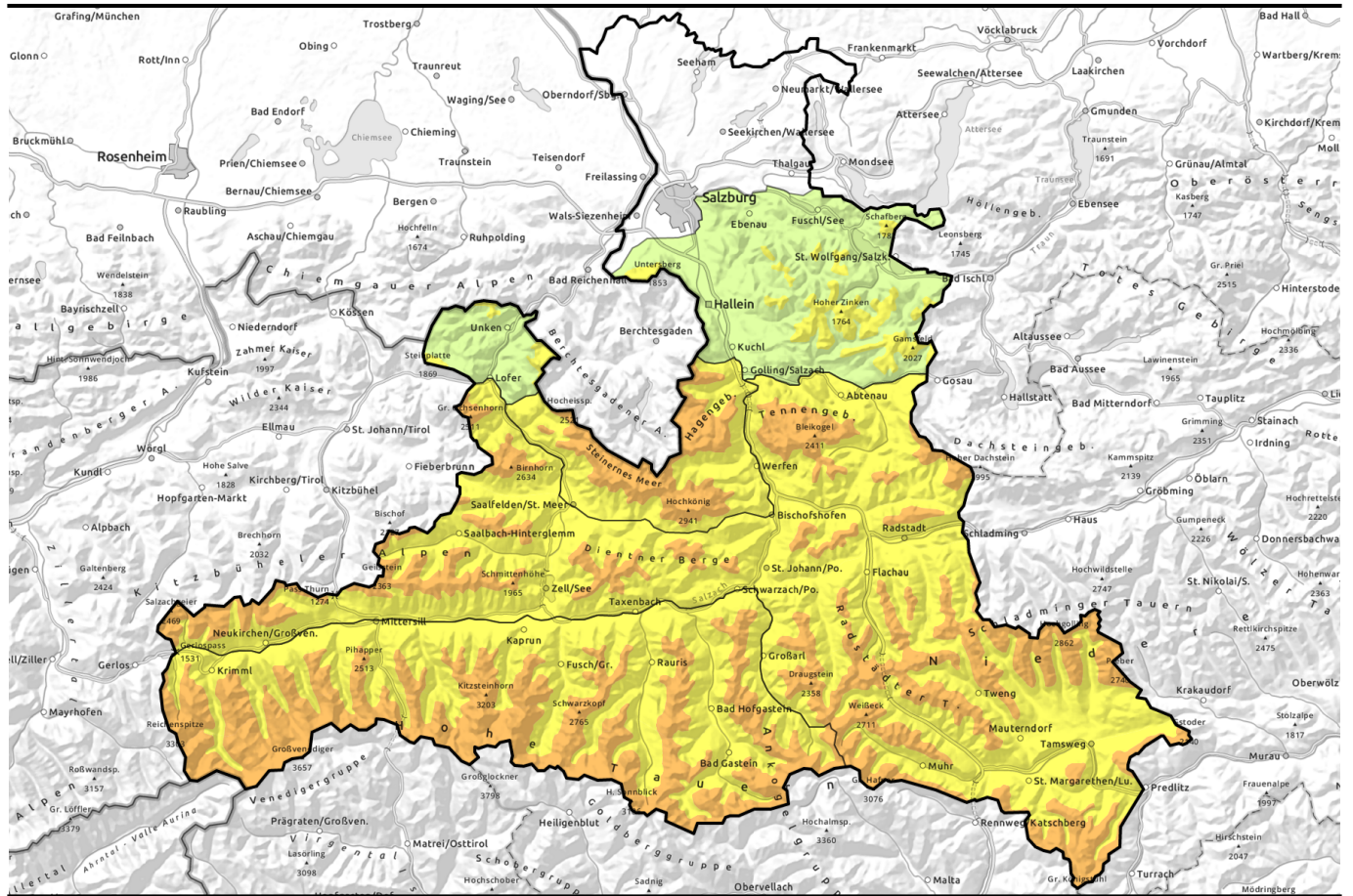
Danger ratings



Expositions



Avalanche report for Thursday, 13.04.2023, afternoon



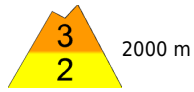
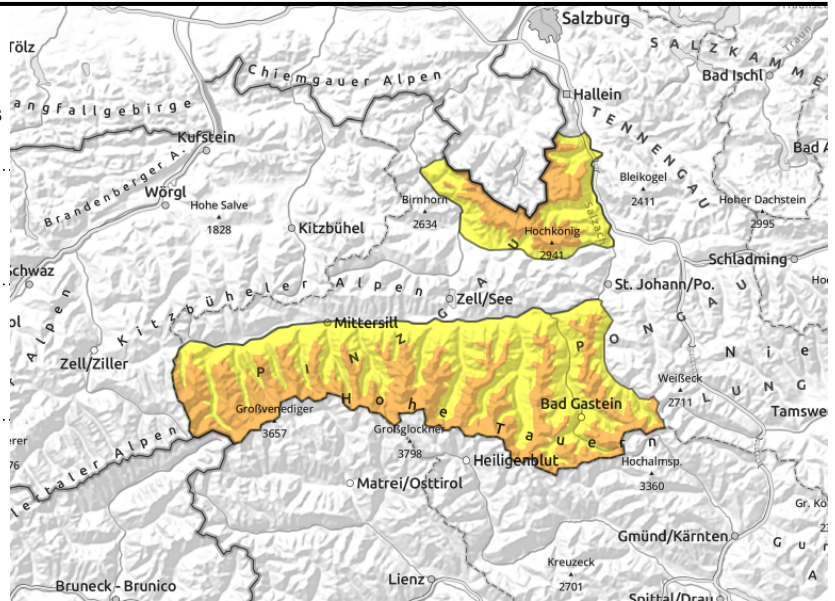
Markanter Anstieg der Lawinengefahr



	<p>Großenedigergruppe Nord, Großenedigergruppe Alpenhauptkamm, Glocknergruppe Nord, Glocknergruppe Alpenhauptkamm, Goldberggruppe Nord, Goldberggruppe Alpenhauptkamm, Steinernes Meer, Hochkönig, Hagengebirge, Göllstock</p>	
<p>2000 m</p>		
	<p>Kitzbüheler Alpen, Glemmtal, Oberpinzgauer Grasberge, Loferer und Leoganger Steinberge, Tennengebirge, Gosaukamm, Niedere Tauern Alpenhauptkamm, Niedere Tauern Nord, Niedere Tauern Süd, Ankogelgruppe, Muhr, Nockberge, Dientner Grasberge, Pongauer Grasberge</p>	
<p>2200 m</p>		
	<p>Osterhorngruppe, Gamsfeldgruppe, Untersbergstock, Chiemgauer Alpen, Heutal, Reiteralpen</p>	
<p>forestline</p>		



<p>Avalanche problems</p>	<p>Danger ratings</p>	<p>Expositions</p>
----------------------------------	------------------------------	---------------------------

Avalanche report for Thursday, 13.04.2023

Großvenedigergruppe Nord, Großvenedigergruppe Alpenhauptkamm, Glocknergruppe Nord, Glocknergruppe Alpenhauptkamm, Goldberggruppe Nord, Goldberggruppe Alpenhauptkamm, Steinernes Meer, Hochkönig, Hagengebirge, Göllstock



  heavy snowfall leading to increasingly unfavourable conditions

  existing weak layers will be further weakened by the fresh fallen snow

Heavy snowfall: considerable avalanche danger

Avalanche danger above 2000 m is CONSIDERABLE, below that altitude danger is MODERATE. Fresh snow and freshly generated snowdrifts at high altitude (>2000m) are easily triggered in some places in all aspects. Danger zones are not visible to the naked eye, increase with ascending altitude. As of afternoon, danger zones will increase in frequency and size as the snowfall continues. Isolated naturally triggered avalanches are then possible above 2600 m, most of them medium-sized, but sometimes large if they sweep away more deeply embedded layers of the snowpack. Highly unfavourable conditions for backcountry tours.

In addition, on previously bare grassy slopes below 2400 m, the danger of glide-snow avalanches will increase. Isolated small-to-medium sized naturally triggered glide-snow avalanches are possible.

Snowpack structure

On Tuesday night, heavy and persistent precipitation will set in, as snow above 1000 m. By Thursday midday, 20-30 cm of fresh snow is expected, but evening on Friday overall 40-60 cm. Winds on Wednesday night will be strong from NW, slacken off early Thursday morning but still be strong on the Main Alpine Ridge.

The weight of the fresh snow will increase the proneness to triggering of the snowpack. Fresh snow and drifts will bond insufficiently with the snowpack and with each other, esp. at high altitudes. Above 2600 m there are expansively metamorphosed (faceted) layers bordering against melt-freeze crusts in the upper part of the snowpack which will be further weakened by the fresh fallen snow. At intermediate altitudes and also on sunny slopes higher up (>2000m) the fresh snow will fall on bare ground, where on steep grassy slopes gliding snow masses can be expected.

Weather

On Thursday, poor conditions!. Visibility reduced from the start. Most precipitation expected in the Tauern and Nockberge, heavy and intensive. Snowfall level will be at 800-1000 m. In the Tauern, brisk to strong northerly winds. At 2000 m: -5 degrees; at 3000 m: -12 degrees.

Outlook

Heavy snowfall will continue, accompanied by intensifying NW winds on Friday. Further rise in avalanche danger levels.

Avalanche problems



Danger ratings



Expositions

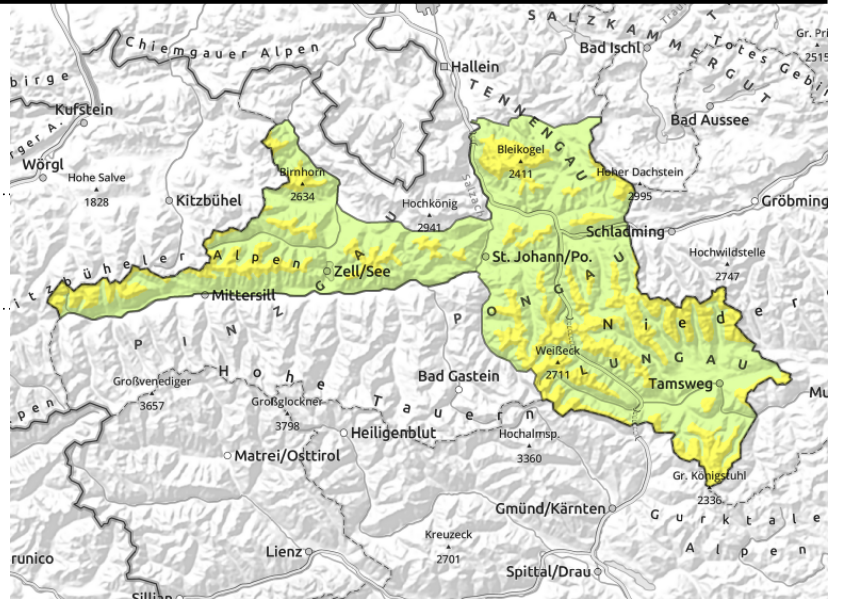


Avalanche report for Thursday, 13.04.2023, morning

Kitzbüheler Alpen, Glemmtal, Oberpinzgauer Grasberge, Loferer und Leoganger Steinberge, Tennengebirge, Gosaukamm, Niedere Tauern Alpenhauptkamm, Niedere Tauern Nord, Niedere Tauern Süd, Ankogelgruppe, Muhr, Nockberge, Dientner Grasberge, Pongauer Grasberge



circumvent small fresh snowdrifts on risk-endangered slopes (>35°)



Gradual increase in avalanche danger

Avalanche danger above 2000 m is MODERATE, reaching CONSIDERABLE danger above 2200 in the afternoon.

Fresh snow and freshly generated snowdrifts at high altitude (>2000m) are easily triggered in some places in all aspects. Danger zones are not visible to the naked eye, increase with ascending altitude. As of afternoon, danger zones will increase in frequency and size as the snowfall continues. Isolated naturally triggered avalanches are then possible above 2600 m, most of them medium-sized, but sometimes large if they sweep away more deeply embedded layers of the snowpack. Highly unfavourable conditions for backcountry tours.

In addition, on previously bare grassy slopes below 2400 m, the danger of glide-snow avalanches will increase. Isolated small-to-medium sized naturally triggered glide-snow avalanches are possible.

Snowpack structure

On Tuesday night, heavy and persistent precipitation will set in, as snow above 1000 m. By Thursday midday, 20-30 cm of fresh snow is expected, but evening on Friday overall 40-60 cm. Winds on Wednesday night will be strong from NW, slacken off early Thursday morning but still be strong on the Main Alpine Ridge.

The weight of the fresh snow will increase the proneness to triggering of the snowpack. Fresh snow and drifts will bond insufficiently with the snowpack and with each other, esp. at high altitudes. Above 2600 m there are expansively metamorphosed (faceted) layers bordering against melt-freeze crusts in the upper part of the snowpack which will be further weakened by the fresh fallen snow. At intermediate altitudes and also on sunny slopes higher up (>2000m) the fresh snow will fall on bare ground, where on steep grassy slopes gliding snow masses can be expected.

Weather

On Thursday, poor conditions!. Visibility reduced from the start. Most precipitation expected in the Tauern and Nockberge, heavy and intensive. Snowfall level will be at 800-1000 m. In the Tauern, brisk to strong northerly winds. At 2000 m: -5 degrees; at 3000 m: -12 degrees.

Outlook

Heavy snowfall will continue, accompanied by intensifying NW winds on Friday. Further rise in

Avalanche problems



Danger ratings



Expositions



published at 12.04.2023, 18:00 h by *Matthias Walcher*

Avalanche report for **Thursday, 13.04.2023, morning**

avalanche danger levels.

Avalanche problems



Danger ratings

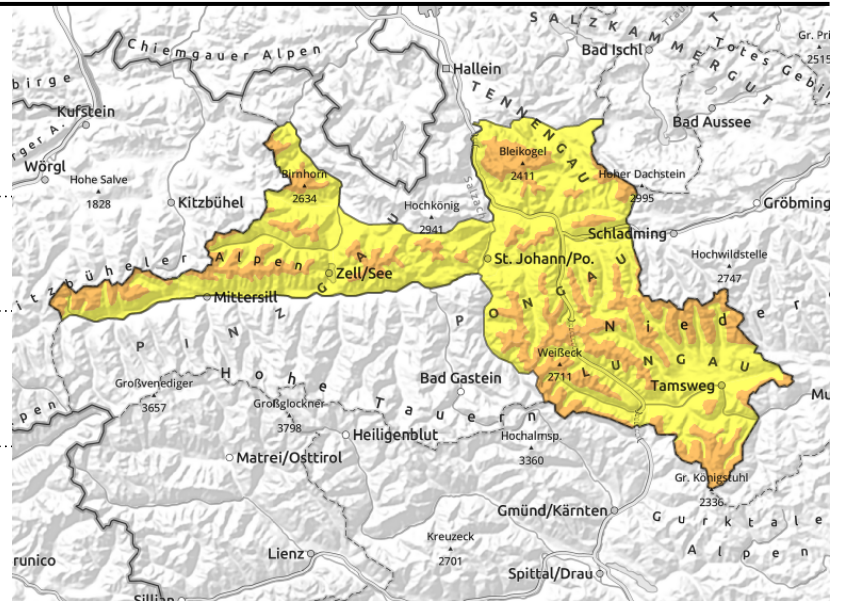


Expositions



Avalanche report for Thursday, 13.04.2023, afternoon

Kitzbüheler Alpen, Glemmtal, Oberpinzgauer Grasberge, Loferer und Leoganger Steinberge, Tennengebirge, Gosaukamm, Niedere Tauern Alpenhauptkamm, Niedere Tauern Nord, Niedere Tauern Süd, Ankogelgruppe, Muhr, Nockberge, Dientner Grasberge, Pongauer Grasberge



heavy snowfall leading to increasingly unfavourable conditions



increasing masses of fresh snow increasing likelihood of glide-snow avalanches

Gradual increase in avalanche danger

Avalanche danger above 2000 m is MODERATE, reaching CONSIDERABLE danger above 2200 in the afternoon.

Fresh snow and freshly generated snowdrifts at high altitude (>2000m) are easily triggered in some places in all aspects. Danger zones are not visible to the naked eye, increase with ascending altitude. As of afternoon, danger zones will increase in frequency and size as the snowfall continues. Isolated naturally triggered avalanches are then possible above 2600 m, most of them medium-sized, but sometimes large if they sweep away more deeply embedded layers of the snowpack. Highly unfavourable conditions for backcountry tours.

In addition, on previously bare grassy slopes below 2400 m, the danger of glide-snow avalanches will increase. Isolated small-to-medium sized naturally triggered glide-snow avalanches are possible.

Snowpack structure

On Tuesday night, heavy and persistent precipitation will set in, as snow above 1000 m. By Thursday midday, 20-30 cm of fresh snow is expected, but evening on Friday overall 40-60 cm. Winds on Wednesday night will be strong from NW, slacken off early Thursday morning but still be strong on the Main Alpine Ridge.

The weight of the fresh snow will increase the proneness to triggering of the snowpack. Fresh snow and drifts will bond insufficiently with the snowpack and with each other, esp. at high altitudes. Above 2600 m there are expansively metamorphosed (faceted) layers bordering against melt-freeze crusts in the upper part of the snowpack which will be further weakened by the fresh fallen snow. At intermediate altitudes and also on sunny slopes higher up (>2000m) the fresh snow will fall on bare ground, where on steep grassy slopes gliding snow masses can be expected.

Weather

On Thursday, poor conditions!. Visibility reduced from the start. Most precipitation expected in the Tauern and Nockberge, heavy and intensive. Snowfall level will be at 800-1000 m. In the Tauern, brisk to strong northerly winds. At 2000 m: -5 degrees; at 3000 m: -12 degrees.

Outlook

Heavy snowfall will continue, accompanied by intensifying NW winds on Friday. Further rise in

Avalanche problems



Danger ratings



Expositions



published at 12.04.2023, 18:00 h by Matthias Walcher

Avalanche report for Thursday, 13.04.2023, afternoon

avalanche danger levels.

Avalanche problems



Danger ratings

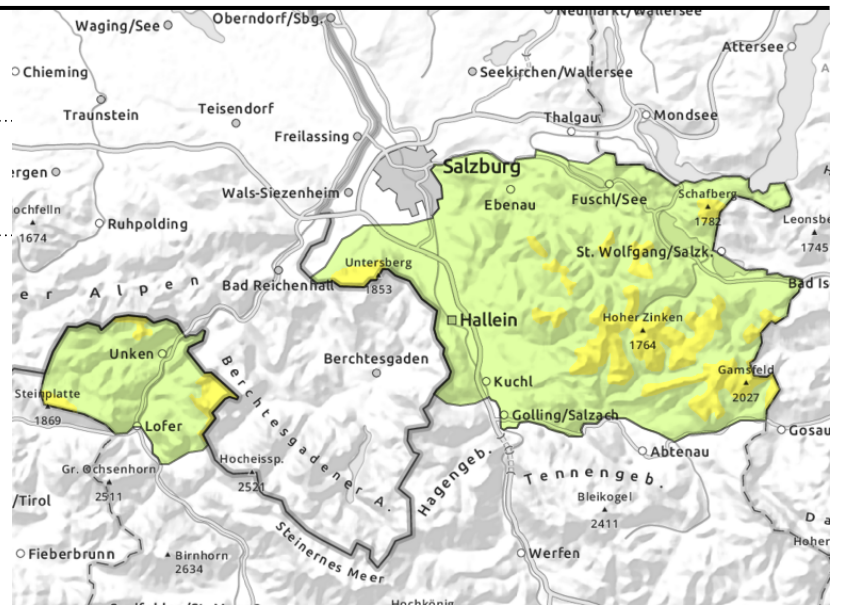
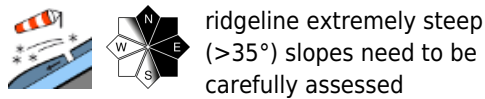


Expositions



Avalanche report for Thursday, 13.04.2023

**Osterhorngruppe, Gamsfeldgruppe,
Untersbergstock, Chiemgauer Alpen, Heutal,
Reiteralpe**



Heed freshly generated snowdrift accumulations

Avalanche danger above the treeline is MODERATE, below that altitude danger is LOW. Fresh snow and freshly generated snowdrifts at high altitude (>2000m) are easily triggered in some places in all aspects. Danger zones are not visible to the naked eye, increase with ascending altitude. As of afternoon, danger zones will increase in frequency and size as the snowfall continues. Isolated naturally triggered avalanches are then possible above 2600 m, most of them medium-sized, but sometimes large if they sweep away more deeply embedded layers of the snowpack. Highly unfavourable conditions for backcountry tours.

In addition, on previously bare grassy slopes below 2400 m, the danger of glide-snow avalanches will increase. Isolated small-to-medium sized naturally triggered glide-snow avalanches are possible.

Snowpack structure

By Thursday midday, 10-15 cm of fresh snow is expected, but evening on Friday overall 20-30 cm. Westerly winds will be strong on Wednesday night, then ease. The old snowpack is stable. Weak layers possible inside the fresh snow. Over the warm, bare ground, fresh snow can glide as an overall mass.

Weather

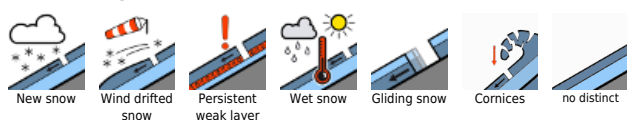
On Thursday, poor conditions!. Visibility reduced from the start. Most precipitation expected in the Tauern and Nockberge, heavy and intensive. Snowfall level will be at 800-1000 m. In the Tauern, brisk to strong northerly winds. At 2000 m: -5 degrees; at 3000 m: -12 degrees.

Outlook

Further rise in avalanche danger levels due to fresh snow and wind.

Translated by Jeffrey McCabe, www.creativtrans.com

Avalanche problems



Danger ratings



Expositions

