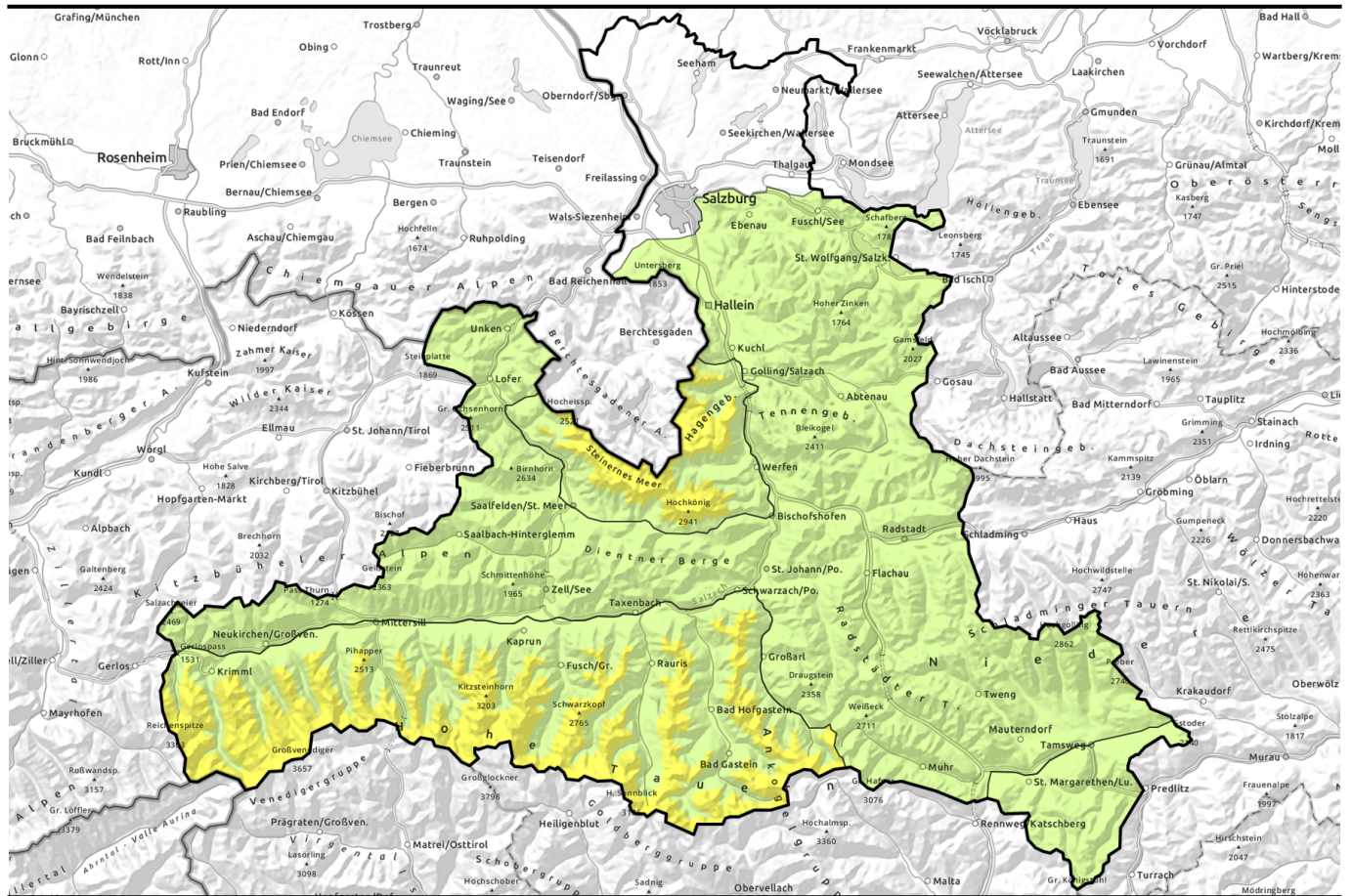


Avalanche report for Tuesday, 11.04.2023



Fresh snowdrift accumulations at high altitudes. Persistent weak layer problem in some regions.

	<p>2600 m Großenedigergruppe Nord, Großenedigergruppe Alpenhauptkamm, Glocknergruppe Nord, Glocknergruppe Alpenhauptkamm, Goldberggruppe Nord, Goldberggruppe Alpenhauptkamm, Steinernes Meer, Hochkönig, Hagengebirge, Göllstock</p>	
	<p>Pongauer Grasberge, Dientner Grasberge, Kitzbüheler Alpen, Glemmtal, Chiemgauer Alpen, Heutal, Reiteralpe, Untersbergstock, Osterhorngruppe, Gamsfeldgruppe, Oberpinzgauer Grasberge, Loferer und Leoganger Steinberge, Tennengebirge, Gosaukamm, Niedere Tauern Alpenhauptkamm, Niedere Tauern Nord, Niedere Tauern Süd, Ankogelgruppe, Muhr</p>	
	<p>Nockberge</p>	

Avalanche problems



Danger ratings

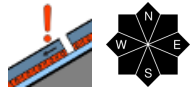


Expositions

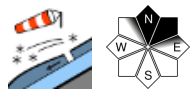


Avalanche report for Tuesday, 11.04.2023

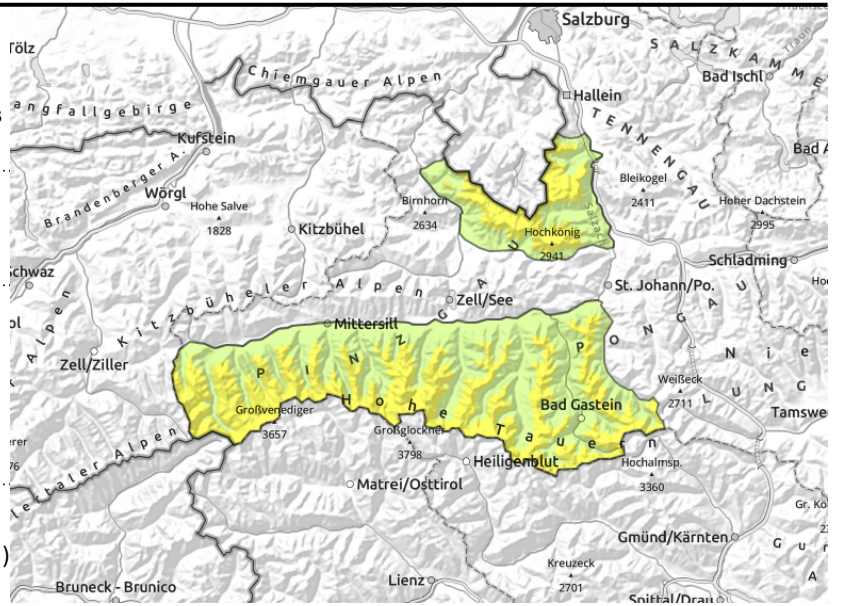
Großvenedigergruppe Nord, Großvenedigergruppe Alpenhauptkamm, Glocknergruppe Nord, Glocknergruppe Alpenhauptkamm, Goldberggruppe Nord, Goldberggruppe Alpenhauptkamm, Steinernes Meer, Hochkönig, Hagengebirge, Göllstock



caution urged on very steep (>35°) slopes in high alpine regions. Maintain: single descent and safe meeting points



circumvent small fresh snowdrifts on very steep (>35°) slopes



Snowdrift accumulations and persistent weak layer at high altitudes

Avalanche danger above 2600m is MODERATE, below that altitude danger is LOW.

Main danger: weak layers in upper part of snowpack. Danger zones occur seldom but are not visible to the naked eye. Triggering a slab avalanche in these weak layers is possible esp. on very steep (>35°) slopes. Avalanches can be unleashed even by the weight of one person and grow to dangerously large size. Particularly unfavorable: sunny slopes above 2800 m.

Fresh snowdrift accumulations are prone to triggering in isolated places at high altitudes. Danger zones lie esp. in ridgeline terrain and summit zones, usually easy to recognize. Avalanches are mostly small. Circumvent snowdrifts on very steep (>35°) slopes, esp. above concavities in the terrain, e.g. steep fall-endangered slopes.

In case of solar radiation, small loose-snow avalanches can be expected on extremely steep (>40°) sunny slopes. Only very isolated loose-snow avalanches can be expected at high altitudes.

Snowpack structure

Above 2600 m there are expansively metamorphosed (faceted) layers bordering on melt-freeze crusts in the upper part of the snowpack. Weak layers more deeply embedded inside the snowpack are unlikely to trigger.

The snowpack was moistened on Easter Monday on sunny slopes, leading to active loose-snow avalanche activity. During cloudy skies at night the snowpack was not able to cool off. Little rainfall below 1900 m further warmed the snowpack. Above 1900 m there was 10 cm of fresh snow. Below 1800 m there is little snow on the ground.

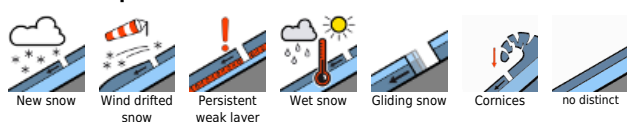
Weather

On Tuesday, dense cloud, frequently precipitation from the NW, reducing visibility. The snowfall level will lie at 1500-1900 m, then descend in the northern regions to 1300 m in the evening. The Lungau Nockberge will be drier, clouds will disperse in the afternoon. Brisk to strong W/NW winds. At 2000 m: 0 degrees; at 3000 m: -7 degrees.

Outlook

No change is expected.

Avalanche problems



Danger ratings

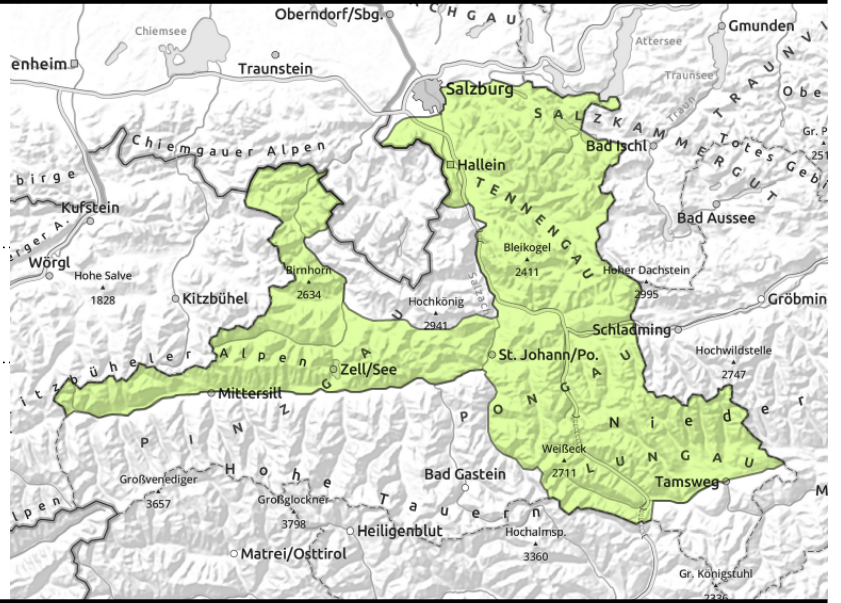


Expositions



Avalanche report for Tuesday, 11.04.2023

Pongauer Grasberge, Dientner Grasberge, Kitzbüheler Alpen, Glemmtal, Chiemgauer Alpen, Heutal, Reiteralpe, Untersbergstock, Osterhorngruppe, Gamsfeldgruppe, Oberpinzgauer Grasberge, Loferer und Leoganger Steinberge, Tennengebirge, Gosaukamm, Niedere Tauern Alpenhauptkamm, Niedere Tauern Nord, Niedere Tauern Süd, Ankogelgruppe, Muhr



circumvent small fresh snowdrifts on risk-endangered slopes

Isolated fresh snowdrift accumulations at high altitudes

Avalanche danger is LOW.

Fresh snow and winds are generating new snowdrift masses, deposited near ridgelines, in summit zones and behind abrupt drops in the terrain, often triggerable by the weight of one sole person (>35°). Easy to recognize, releases mostly small, but not easily recognized. Light rainfall means isolated small wet loose-snow slides and glide-snow avalanches possible on extremely steep (>40°) slopes.

Snowpack structure

The snowpack accumulations from the weekend have settled due to mild temperatures, and consolidated. The old snowpack is stable. On Easter Monday the snowpack was moistened on sunny slopes, leading to active loose-snow avalanche activity. In the night of cloudy skies the snowpack was not able to cool. A bit of rainfall below 1900 m further warmed it. An additional 10 cm of fresh snow will be deposited on top of it. Below 1800 m there is little snow on the ground.

Weather

On Tuesday, dense cloud, frequently precipitation from the NW, reducing visibility. The snowfall level will lie at 1500-1900 m, then descend in the northern regions to 1300 m in the evening. The Lungau Nockberge will be drier, clouds will disperse in the afternoon. Brisk to strong W/NW winds. At 2000 m: 0 degrees; at 3000 m: -7 degrees.

Outlook

Low avalanche danger

Avalanche problems



Danger ratings

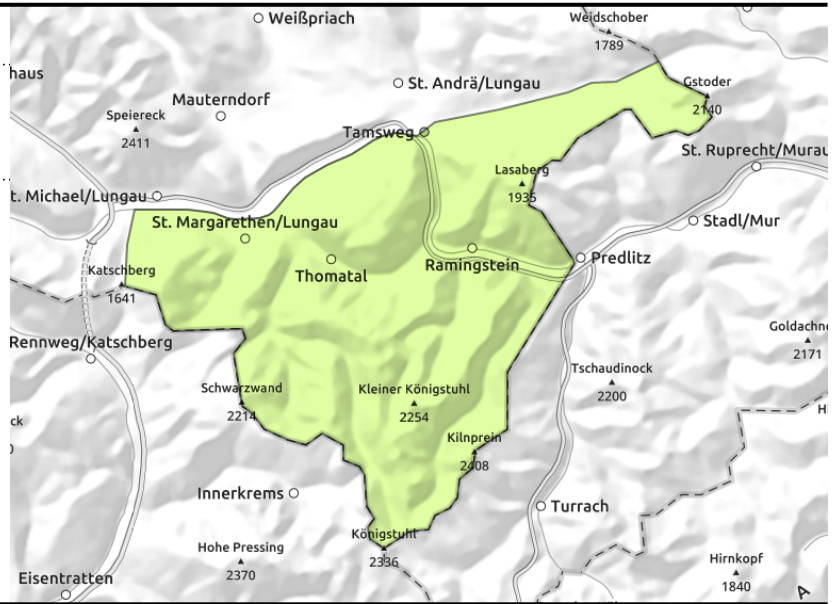
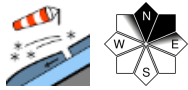


Expositions



Avalanche report for **Tuesday, 11.04.2023**

Nockberge



Favorable situation

Avalanche danger is LOW.

Only few danger zones for dry-snow slab avalanches in extremely steep terrain at high altitudes. Small fresh snowdrift accumulations there can trigger in isolated cases. Weak layers deeply embedded in the snowpack are unlikely to trigger.

Snowpack structure

The snowpack is stable. The small amount of fresh snow has settled and become melt-freeze encrusted in the strong sun. In exposed terrain there are small, shallow snowdrift accumulations which are unlikely to trigger. Higher daytime temperatures and some solar radiation will further soften the snowpack.

Weather

On Tuesday, dense cloud, frequently precipitation from the NW, reducing visibility. The snowfall level will lie at 1500-1900 m, then descend in the northern regions to 1300 m in the evening. The Lungau Nockberge will be drier, clouds will disperse in the afternoon. Brisk to strong W/NW winds. At 2000 m: 0 degrees; at 3000 m: -7 degrees.

Outlook

Low avalanche danger.

Translated by Jeffrey McCabe, www.creativtrans.com

Avalanche problems



Danger ratings



Expositions

