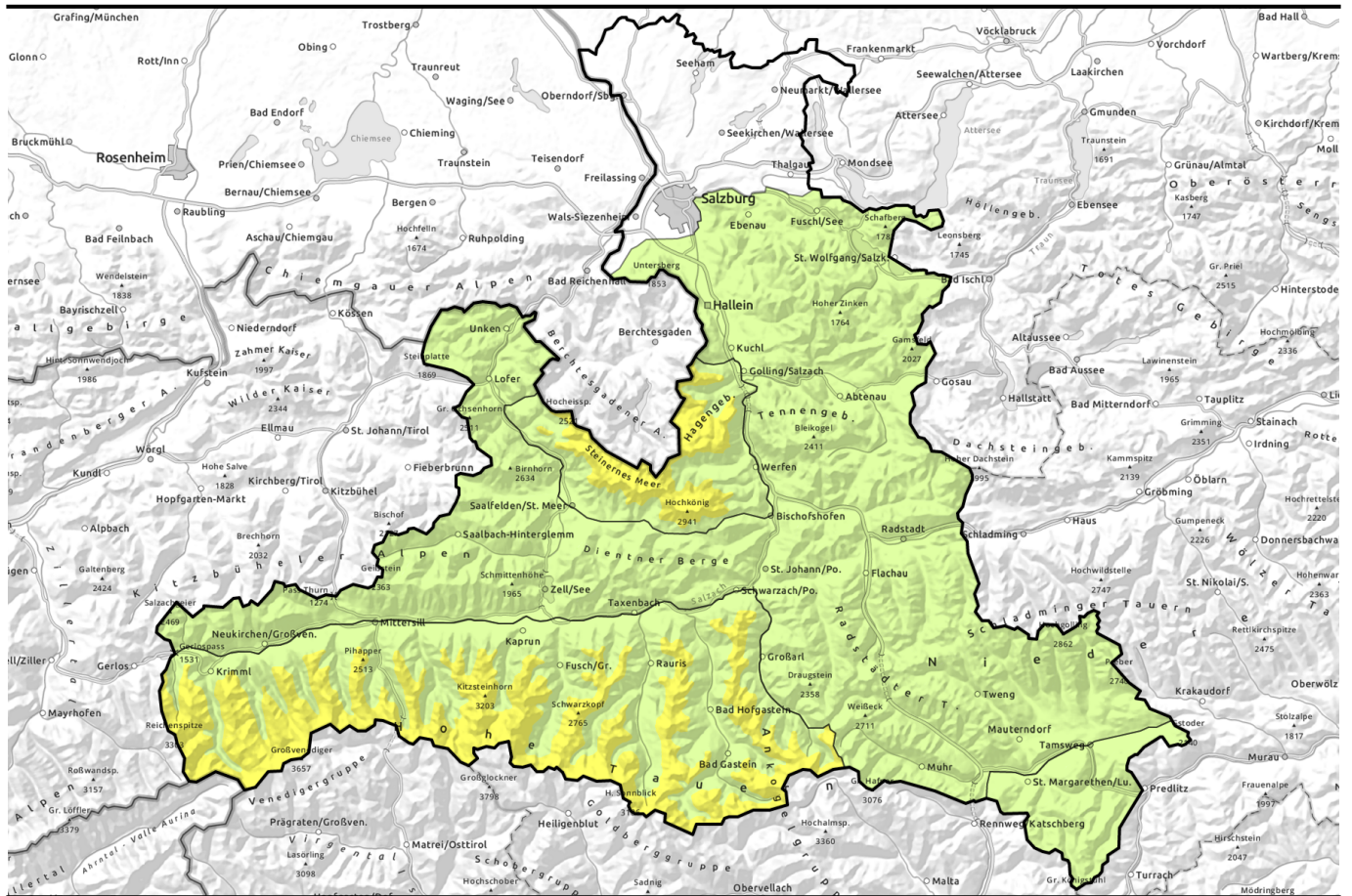


# Avalanche report for Monday, 10.04.2023



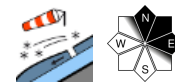
## Fresh snowdrift accumulations at high altitudes. Persistent weak layer problem in some regions.



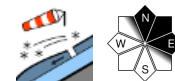
2500 m  
 Großenedigergruppe Nord, Großenedigergruppe Alpenhauptkamm, Glocknergruppe Nord, Glocknergruppe Alpenhauptkamm, Goldberggruppe Nord, Goldberggruppe Alpenhauptkamm, Steinernes Meer, Hochkönig, Hagengebirge, Göllstock



Pongauer Grasberge, Dientner Grasberge, Kitzbüheler Alpen, Glemmtal, Chiemgauer Alpen, Heutal, Reiteralpe, Unterschnee, Osterhorngruppe, Gamsfeldgruppe, Oberpinzgauer Grasberge, Loferer und Leoganger Steinberge, Tennengebirge, Gosaukamm, Niedere Tauern Alpenhauptkamm, Niedere Tauern Nord, Niedere Tauern Süd, Ankogelgruppe, Muhr



Nockberge



### Avalanche problems



### Danger ratings



### Expositions



# Avalanche report for Monday, 10.04.2023

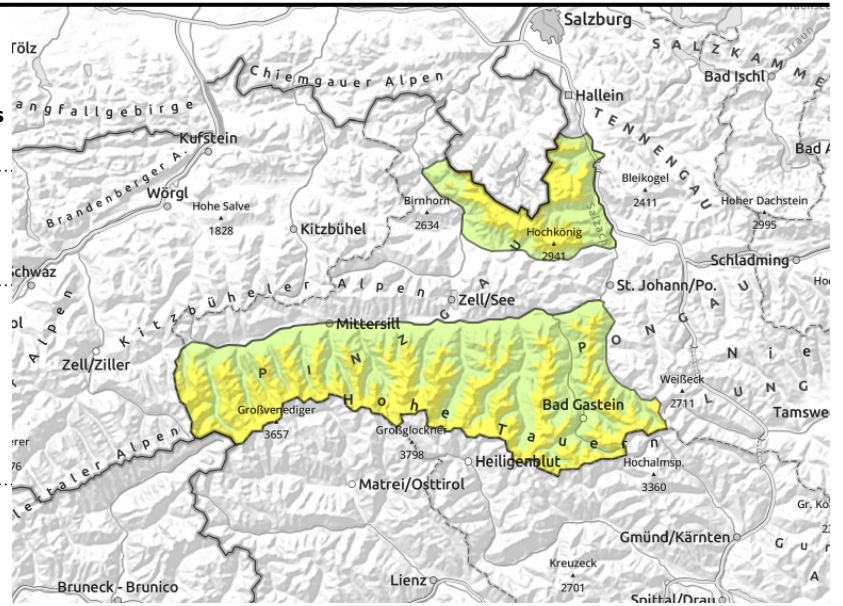
**Großvenedigergruppe Nord, Großvenedigergruppe Alpenhauptkamm, Glocknergruppe Nord, Glocknergruppe Alpenhauptkamm, Goldberggruppe Nord, Goldberggruppe Alpenhauptkamm, Steinernes Meer, Hochkönig, Hagengebirge, Göllstock**



caution urged on very steep (>35°) slopes in high alpine regions. Maintain: single descent and safe meeting points



circumvent fresh snowdrifts on very steep (>35°) slopes



## Snowdrift accumulations and persistent weak layer at high altitudes

Avalanche danger above 2500m is MODERATE, below that altitude danger is LOW.

Main danger: weak layers in upper part of snowpack. Danger zones occur seldom but are not visible to the naked eye. Triggering a slab avalanche in these weak layers is possible esp. on very steep (>35°) slopes. Avalanches can be unleashed even by the weight of one person and grow to dangerously large size. Particularly unfavorable: sunny slopes above 2800 m.

Fresh snowdrift accumulations are prone to triggering in isolated places at high altitudes. Danger zones lie esp. in ridgeline terrain and summit zones, usually easy to recognize. Avalanches are mostly small, in regions of the Tauern where snowfall has been heaviest also medium-sized. Circumvent snowdrifts on very steep (>35°) slopes, esp. above concavities in the terrain, e.g. steep fall-endangered slopes.

In case of solar radiation, small loose-snow avalanches can be expected on extremely steep (>40°) sunny slopes, also small glide-snow avalanches in places where the ground was previously bare of snow are possible.

### Snowpack structure

By Sunday morning a total of 10-20cm of fresh snowfall, locally up to 30 cm has fallen. Due to fresh snow and NW winds, fresh snowdrift accumulations were generated, were deposited atop a loose snowpack at high altitudes, prone to triggering.

On sunny slopes the snowdrift accumulations are unlikely to trigger.

Above 2500 m there are expansively metamorphosed (faceted) layers bordering on melt-freeze crusts in the upper part of the snowpack. Reports speak of SE/S/SW slopes above 2800 m being particularly prone to triggering. Weak layers more deeply embedded inside the snowpack are unlikely to trigger. Below 1800 m there is little snow on the ground.

### Weather

On Monday, sunshine will dominate, visibility will be good. Low lying clouds and fog in early morning or residual clouds can disturb. As evening approaches, high-altitude cirrus clouds from the west will move in. Winds will be mostly light at all altitudes. At 2000 m: -6 to +2 degrees; at 3000 m: -10 to -4 degrees.

#### Avalanche problems



#### Danger ratings



#### Expositions



## Avalanche report for **Monday, 10.04.2023**

### Outlook

Snowdrift accumulations will consolidate, then will be unlikely to trigger. Persistent weak layer at high altitudes will continue to be a threat.

---

#### Avalanche problems



#### Danger ratings

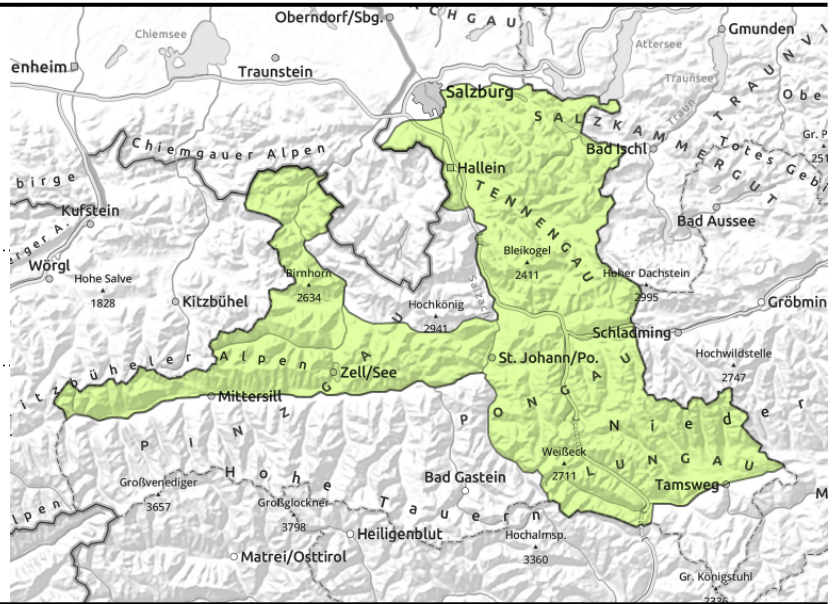


#### Expositions



# Avalanche report for Monday, 10.04.2023

**Pongauer Grasberge, Dientner Grasberge, Kitzbüheler Alpen, Glemmtal, Chiemgauer Alpen, Heutal, Reiteralpe, Untersbergstock, Osterhorngruppe, Gamsfeldgruppe, Oberpinzgauer Grasberge, Loferer und Leoganger Steinberge, Tennengebirge, Gosaukamm, Niedere Tauern Alpenhauptkamm, Niedere Tauern Nord, Niedere Tauern Süd, Ankogelgruppe, Muhr**



circumvent small fresh snowdrifts on risk-endangered slopes

## Isolated fresh snowdrift accumulations at high altitudes

Avalanche danger is LOW.

Fresh snow and winds have generated new snowdrift masses, deposited near ridgelines, in summit zones and behind abrupt drops in the terrain, often triggerable by the weight of one sole person. Easy to recognize, releases mostly small.

In case of solar radiation, small loose-snow slides can be expected on extremely steep sunny slopes.

### Snowpack structure

By Sunday morning a total of 5-15 cm of fresh snowfall has fallen. Due to fresh snow and NW winds, fresh snowdrift accumulations were generated, get deposited atop a loose snowpack at high altitudes and be prone to triggering. On sunny slopes the snowdrift accumulations are unlikely to trigger. The old snowpack is stable. Below 1800 m there is little snow on the ground.

### Weather

On Monday, sunshine will dominate, visibility will be good. Low lying clouds and fog in early morning or residual clouds can disturb. As evening approaches, high-altitude cirrus clouds from the west will move in. Winds will be mostly light at all altitudes. At 2000 m: -6 to +2 degrees; at 3000 m: -10 to -4 degrees.

### Outlook

Low avalanche danger. Snowdrift accumulations will rapidly consolidate, then will be unlikely to trigger.

#### Avalanche problems



#### Danger ratings

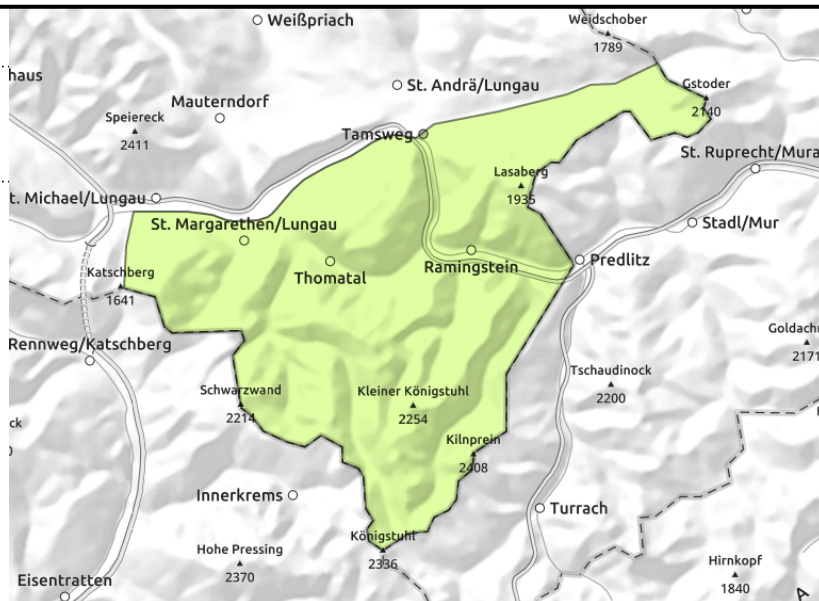
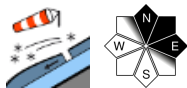


#### Expositions



# Avalanche report for **Monday, 10.04.2023**

## Nockberge



## Favorable situation

Avalanche danger is LOW.

Only few danger zones for dry-snow slab avalanches in extremely steep terrain at high altitudes. Small fresh snowdrift accumulations there can trigger in isolated cases. Weak layers deeply embedded in the snowpack are unlikely to trigger.

## Snowpack structure

The snowpack is stable. The small amount of fresh snow has settled and become melt-freeze encrusted in the strong sun. In exposed terrain there are small, shallow snowdrift accumulations which are unlikely to trigger.

## Weather

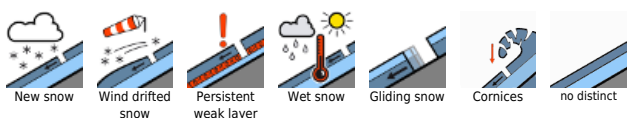
On Monday, sunshine will dominate, visibility will be good. Low lying clouds and fog in early morning or residual clouds can disturb. As evening approaches, high-altitude cirrus clouds from the west will move in. Winds will be mostly light at all altitudes. At 2000 m: -6 to +2 degrees; at 3000 m: -10 to -4 degrees.

## Outlook

Low avalanche danger

Translated by Jeffrey McCabe, [www.creativtrans.com](http://www.creativtrans.com)

### Avalanche problems



### Danger ratings



### Expositions

