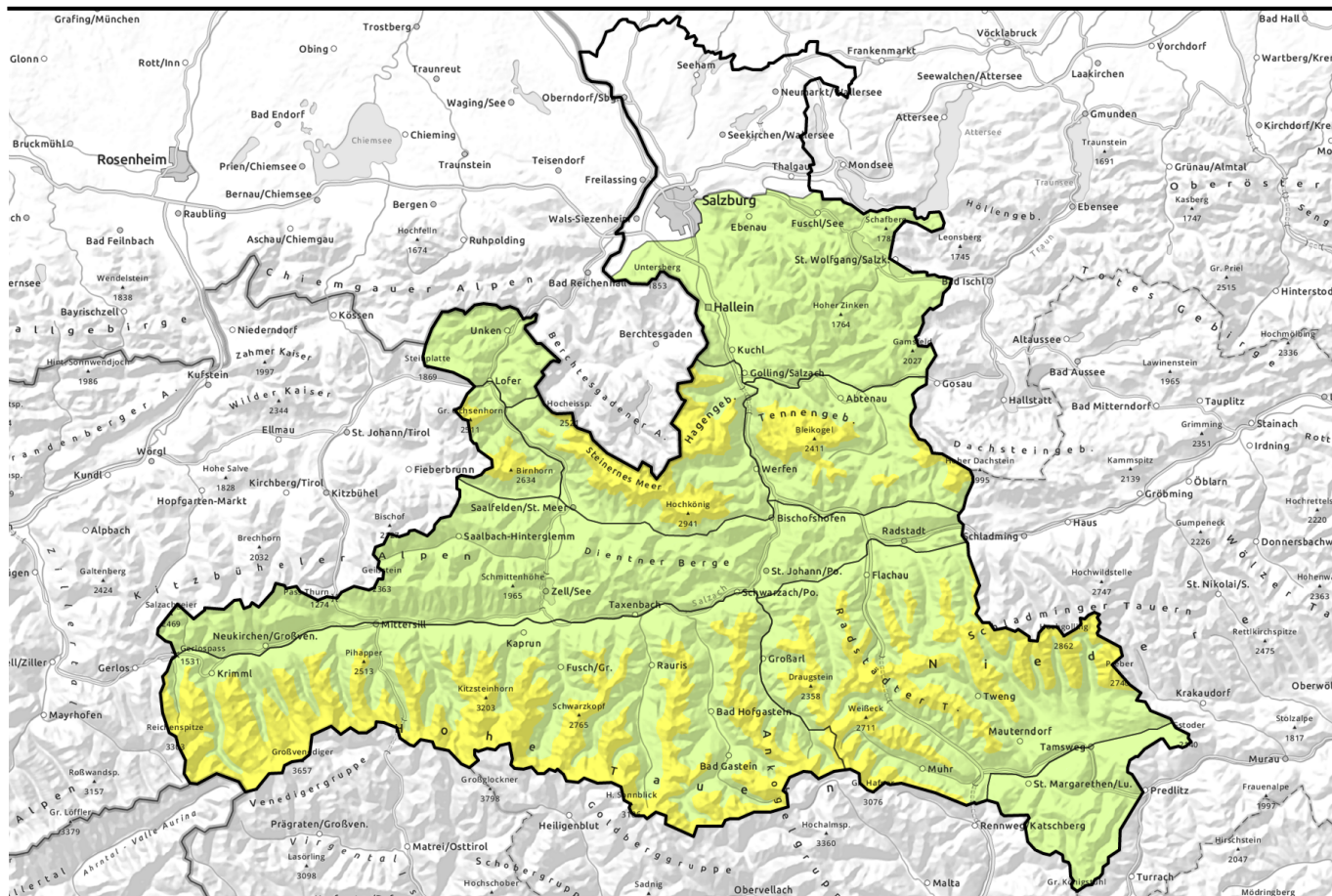


Avalanche report for Sunday, 09.04.2023



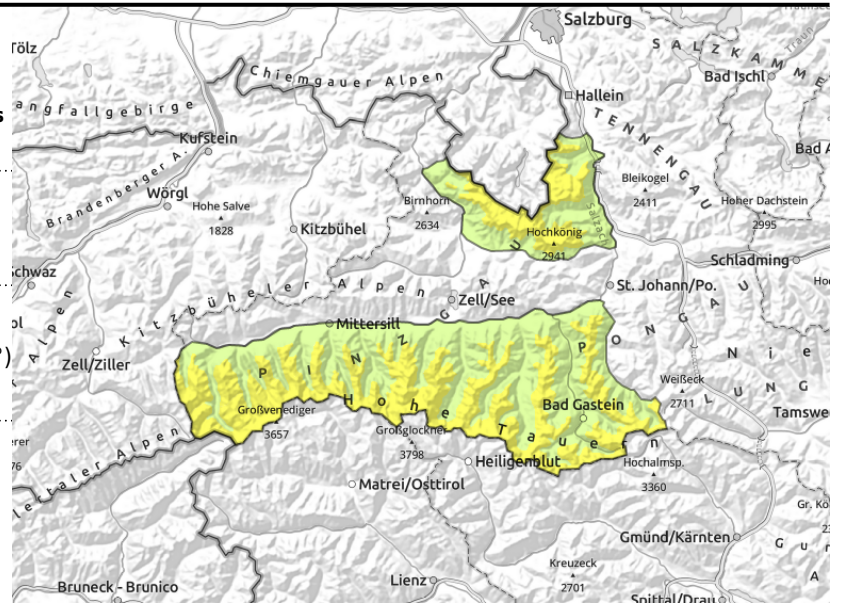
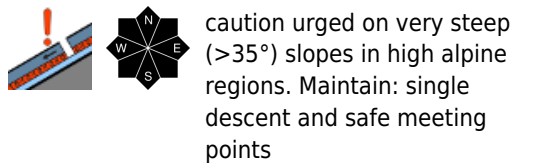
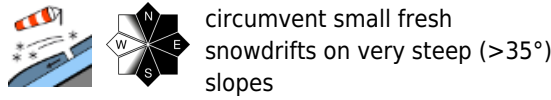
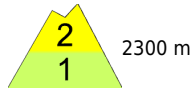
Fresh snowdrift accumulations being generated by fresh snow + wind. Persistent weak layer problem in Hohe Tauern.

	<p>2300 m Großvenedigergruppe Nord, Großvenedigergruppe Alpenhauptkamm, Glocknergruppe Nord, Glocknergruppe Alpenhauptkamm, Goldberggruppe Nord, Goldberggruppe Alpenhauptkamm, Steinernes Meer, Hochkönig, Hagengebirge, Göllstock</p>	
	<p>2300 m Loferer und Leoganger Steinberge, Tennengebirge, Gosaukamm, Niedere Tauern Nord, Niedere Tauern Süd, Ankogelgruppe, Muhr, Niedere Tauern Alpenhauptkamm</p>	
	<p>Pongauer Grasberge, Dientner Grasberge, Kitzbüheler Alpen, Glemmtal, Chiemgauer Alpen, Heutal, Reiteralpe, Untersbergstock, Osterhorngruppe, Gamsfeldgruppe, Oberpinzgauer Grasberge</p>	
	<p>Nockberge</p>	

<p>Avalanche problems</p>	<p>Danger ratings</p>	<p>Expositions</p>
----------------------------------	------------------------------	---------------------------

Avalanche report for Sunday, 09.04.2023

Großvenedigergruppe Nord, Großvenedigergruppe Alpenhauptkamm, Glocknergruppe Nord, Glocknergruppe Alpenhauptkamm, Goldberggruppe Nord, Goldberggruppe Alpenhauptkamm, Steinernes Meer, Hochkönig, Hagengebirge, Göllstock



Fresh snowdrift accumulations and persistent weak layer at high altitudes

Avalanche danger above 2300m is Moderate, below that altitude danger is Low.

As a result of fresh snow and wind, fresh snowdrift accumulations are accumulating. Danger levels occur at high and high-alpine altitudes, increase in frequency with ascending altitude.

Snowdrift accumulations, mostly in summit and ridgeline terrain at high altitudes (>2000m). In the Tauern the releases can attain medium size.

In addition, weak layers in the upper part of the snowpack are prone to triggering, they're rare but not visible to the naked eye. They occur on very steep (>35°) slopes above 2500 m, where even minimum additional loading can trigger an avalanche which can grow to dangerously large size.

Particularly unfavorable: sunny slopes above 2800 m.

In case of solar radiation, small loose-snow avalanches can be expected on extremely steep (>40°) sunny slopes, also small glide-snow avalanches in places where the ground was previously bare of snow are possible

Snowpack structure

By Sunday morning a total of 15-25 cm of fresh snowfall, locally up to 35 cm has fallen. Winds on Saturday were blowing at moderate to strong velocity from the northwest and will remain above transport strength also on Sunday, particularly on the Main Alpine Ridge. As a result of fresh snow and winds, fresh snowdrift accumulations will be generated, get deposited atop a loose snowpack at high altitudes and be prone to triggering.

Above 2500 m there are faceted layers bordering melt-freeze crusts inside the snowpack. Reports speak of SE/S/SW slopes above 2800 m as having heightened likelihood of triggering. Weak layers more deeply embedded inside the snowpack are unlikely to trigger.

Below 1800 m there is little snow on the ground.

Weather

On Sunday, instable weather conditions, with varying visibility and a few bright intervals, repeated minor showers possible all day long. Snowfall down to valley levels in the morning, then during the daytimer mostly above 1000 m. Light to moderate northerly winds. At 2000 m: -7 to -4 degrees; at

Avalanche problems



Danger ratings



Expositions



Avalanche report for **Sunday, 09.04.2023**

3000 m: -14 to -11 degrees.

Outlook

No significant change in avalanche danger levels is expected. In some places, snowdrift problem and persistent weak layer at high altitudes.

Avalanche problems



Danger ratings

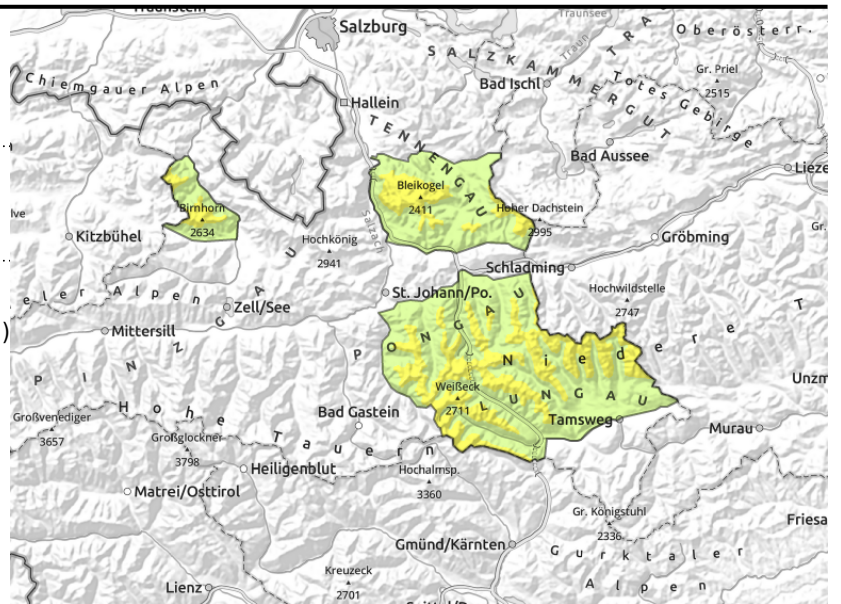
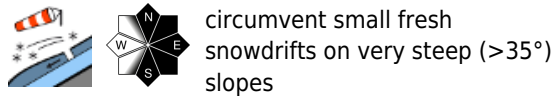
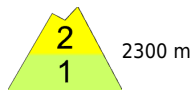


Expositions



Avalanche report for Sunday, 09.04.2023

Loferer und Leoganger Steinberge, Tennengebirge, Gosaukamm, Niedere Tauern Nord, Niedere Tauern Süd, Ankogelgruppe, Muhr, Niedere Tauern Alpenhauptkamm



Main danger: fresh snowdrift masses

Avalanche danger above 2300m is MODERATE, below that altitude danger is LOW. Fresh snow and winds are generating new snowdrift masses, deposited near ridgelines, in summit zones and behind abrupt drops in the terrain. Difficult to recognize. Danger zones increase with ascending altitude. Releases mostly small but where snowfall is heavy can be larger. In case of solar radiation, small loose-snow avalanches can be expected on extremely steep (>40°) sunny slopes.

Snowpack structure

By Sunday morning a total of 10-20 cm of fresh snowfall, more is possible in the Ankogel Massif. Winds on Saturday were blowing at moderate to strong velocity from the northwest and will remain above transport strength also on Sunday, particularly on the Main Alpine Ridge. As a result of fresh snow and winds, fresh snowdrift accumulations will be generated, get deposited atop a loose snowpack at high altitudes and be prone to triggering. Above 2500 m there are faceted layers bordering melt-freeze crusts inside the snowpack. In addition, in case of solar radiation, small loose-snow avalanches can be expected on sunny, steep, rocky slopes. Below 1800 m there is little snow on the ground.

Weather

On Sunday, instable weather conditions, with varying visibility and a few bright intervals, repeated minor showers possible all day long. Snowfall down to valley levels in the morning, then during the daytimer mostly above 1000 m. Light to moderate northerly winds. At 2000 m: -7 to -4 degrees; at 3000 m: -14 to -11 degrees.

Outlook

No significant change expected.

Avalanche problems



Danger ratings



Expositions

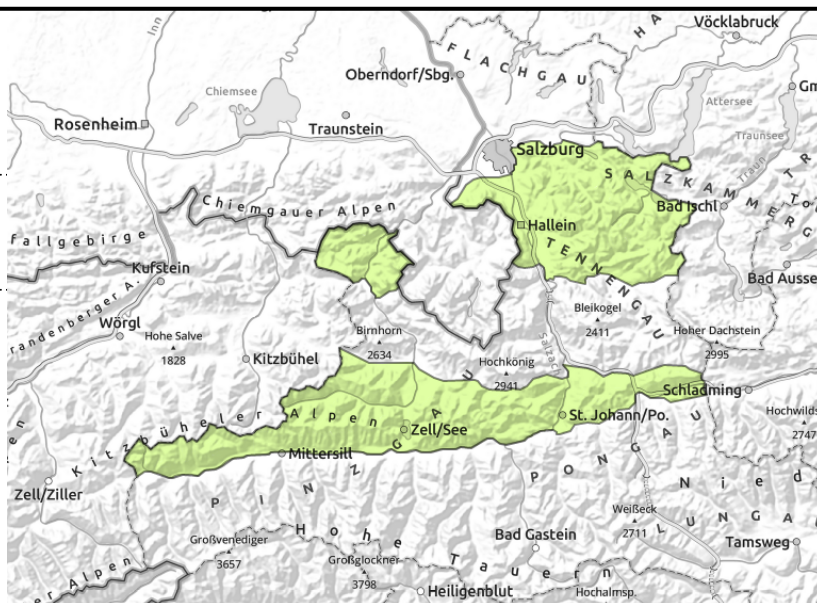


Avalanche report for Sunday, 09.04.2023

Pongauer Grasberge, Dientner Grasberge, Kitzbüheler Alpen, Glemmtal, Chiemgauer Alpen, Heutal, Reiteralpe, Untersbergstock, Osterhorngruppe, Gamsfeldgruppe, Oberpinzgauer Grasberge



circumvent snowdrift accumulations on very steep (>35°) slopes at high altitudes



Fresh snowdrift masses at high altitudes

Avalanche danger is LOW. There are only few small danger zones due to fresh snowdrift accumulations in extremely steep ridgeline terrain and in gullies, where releases are possible. Danger zones difficult to spot. Small loose-snow avalanches possible on extremely steep sunny slopes.

Snowpack structure

By Sunday morning a total of 5-10 cm of fresh snowfall, more is possible in the Kitzbühel Alps. Winds on Saturday were blowing at moderate to strong velocity from the northwest and will remain above transport strength also on Sunday. The old snowpack is stable.

Below 1800 m there is little snow on the ground.

Weather

On Sunday, instable weather conditions, with varying visibility and a few bright intervals, repeated minor showers possible all day long. Snowfall down to valley levels in the morning, then during the daytimer mostly above 1000 m. Light to moderate northerly winds. At 2000 m: -7 to -4 degrees; at 3000 m: -14 to -11 degrees.

Outlook

No significant change expected. Snowdrift masses will rapidly bond with the old snowpack, are unlikely to be triggered.

Avalanche problems



Danger ratings

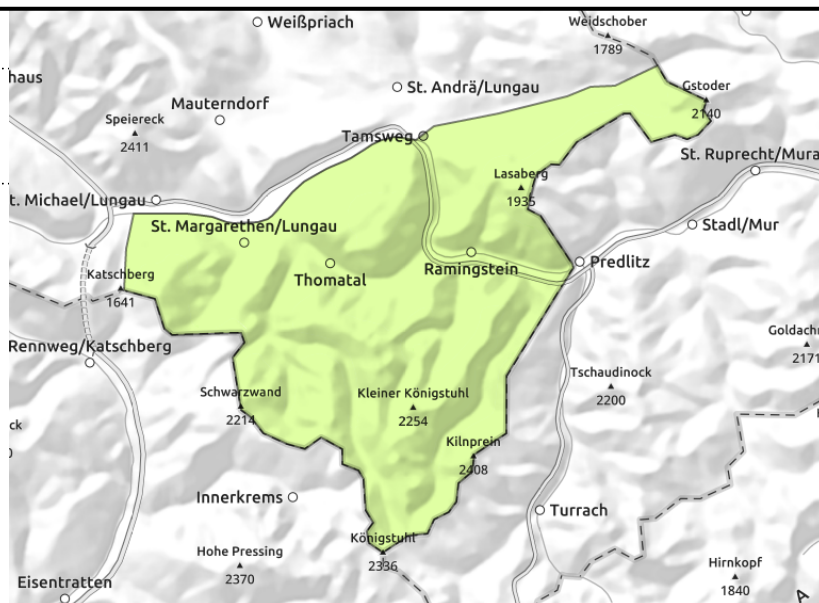
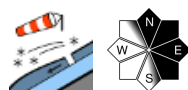


Expositions



Avalanche report for Sunday, 09.04.2023

Nockberge



Favorable situation

Avalanche danger is LOW.

Only few danger zones for dry-snow slab avalanches in extremely steep terrain at high altitudes. Small fresh snowdrift accumulations there can trigger in isolated cases. Weak layers deeply embedded in the snowpack are unlikely to trigger.

Snowpack structure

The snowpack is stable. The small amount of fresh snow has settled and become melt-freeze encrusted in the strong sun. In exposed terrain there are small, shallow snowdrift accumulations which are unlikely to trigger.

Weather

On Sunday, instable weather conditions, with varying visibility and a few bright intervals, repeated minor showers possible all day long. Snowfall down to valley levels in the morning, then during the daytimer mostly above 1000 m. Light to moderate northerly winds. At 2000 m: -7 to -4 degrees; at 3000 m: -14 to -11 degrees.

Outlook

No significant change expected.

Translated by Jeffrey McCabe, www.creativtrans.com

Avalanche problems



Danger ratings



Expositions

