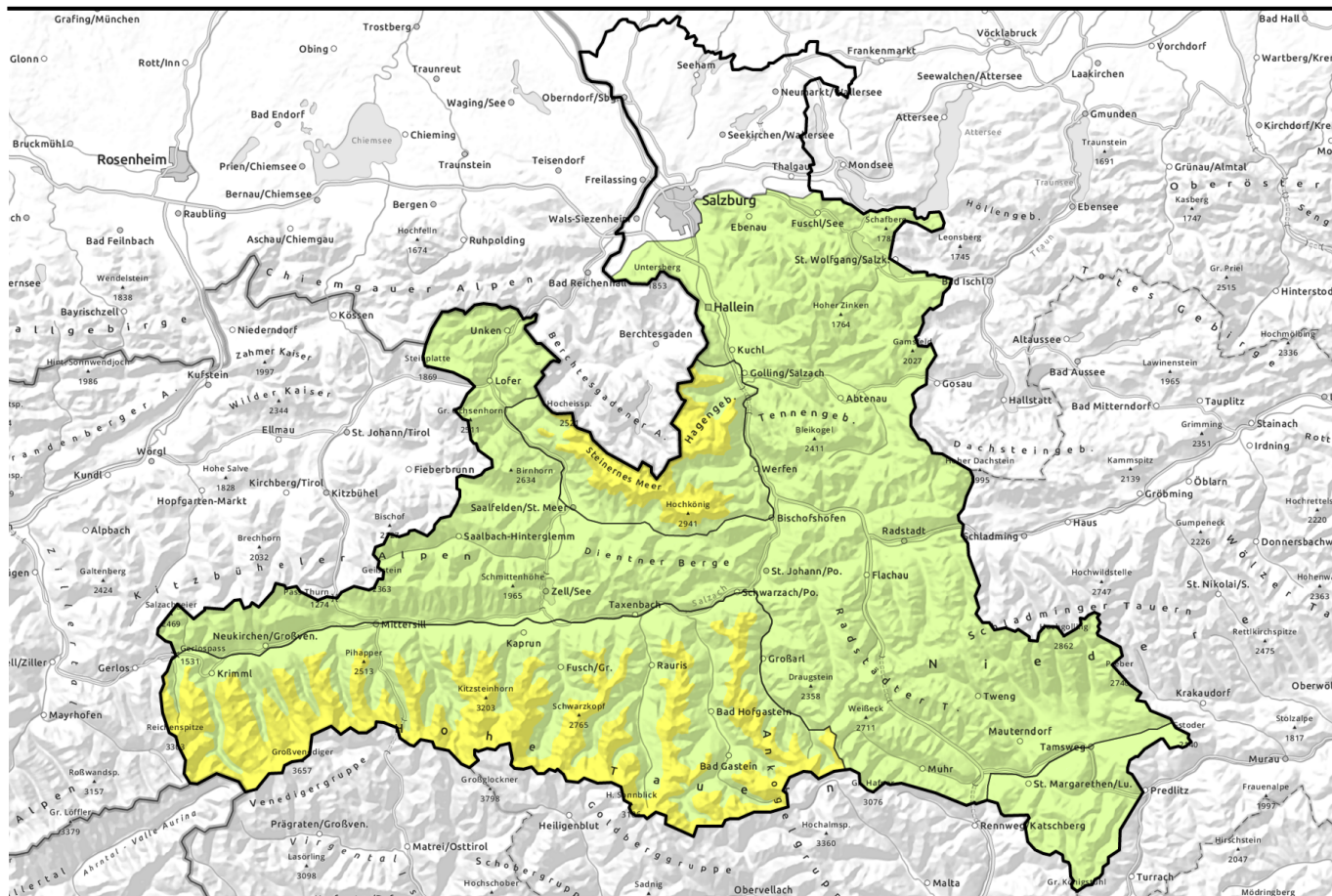


Avalanche report for Friday, 07.04.2023



Persistent weak layer at high altitudes, otherwise favourable conditions



Untersbergstock, Chiemgauer Alpen, Heutal, Reiteralpe, Dientner Grasberge, Pongauer Grasberge, Tennengebirge, Gosaukamm, Niedere Tauern Nord, Niedere Tauern Alpenhauptkamm, Niedere Tauern Süd, Ankogelgruppe, Muhr, Kitzbüheler Alpen, Glemmtal, Loferer und Leoganger Steinberge, Oberpinzgauer Grasberge, Osterhorngruppe, Gamsfeldgruppe



2500 m

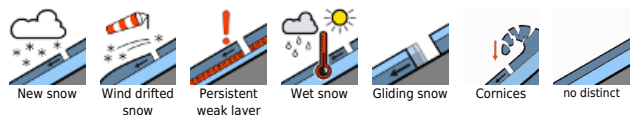
Steinernes Meer, Hochkönig, Hagengebirge, Göllstock, Großvenedigergruppe Nord, Großvenedigergruppe Alpenhauptkamm, Glocknergruppe Nord, Glocknergruppe Alpenhauptkamm, Goldberggruppe Nord, Goldberggruppe Alpenhauptkamm



Nockberge



Avalanche problems



Danger ratings

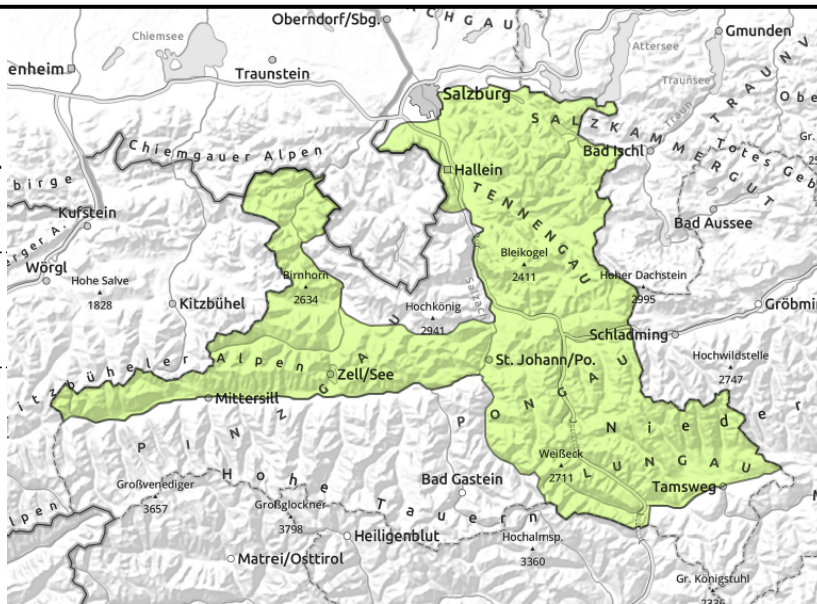


Expositions



Avalanche report for Friday, 07.04.2023

Untersbergstock, Chiemgauer Alpen, Heutal, Reiteralpe, Dientner Grasberge, Pongauer Grasberge, Tennengebirge, Gosaukamm, Niedere Tauern Nord, Niedere Tauern Alpenhauptkamm, Niedere Tauern Süd, Ankogelgruppe, Muhr, Kitzbüheler Alpen, Glemmtal, Loferer und Leoganger Steinberge, Oberpinzgauer Grasberge, Osterhorngruppe, Gamsfeldgruppe



circumvent zones below glide cracks

Few danger zones in extremely steep terrain

Avalanche danger is LOW.

There is low danger from naturally triggered glide-snow avalanches which can release at any time of day or night in extremely steep zones which have not yet discharged.

Snowpack structure

Atop a thoroughly wet old snowpack there lie a few cm of bonded fresh snow. No indications of weak layers inside the snowpack.

Weather

On Friday cloudbanks will move in from the west, visibility will deteriorate particularly in the Pinzgau. As of midday in the regions west of the Hochkönig, rainfall and snowfall (above 1000m) can be expected. Winds will be light to moderate from west to north. At 2000 m: -4 degrees.

Outlook

No significant change expected.

Avalanche problems



Danger ratings

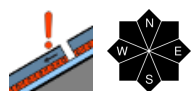


Expositions

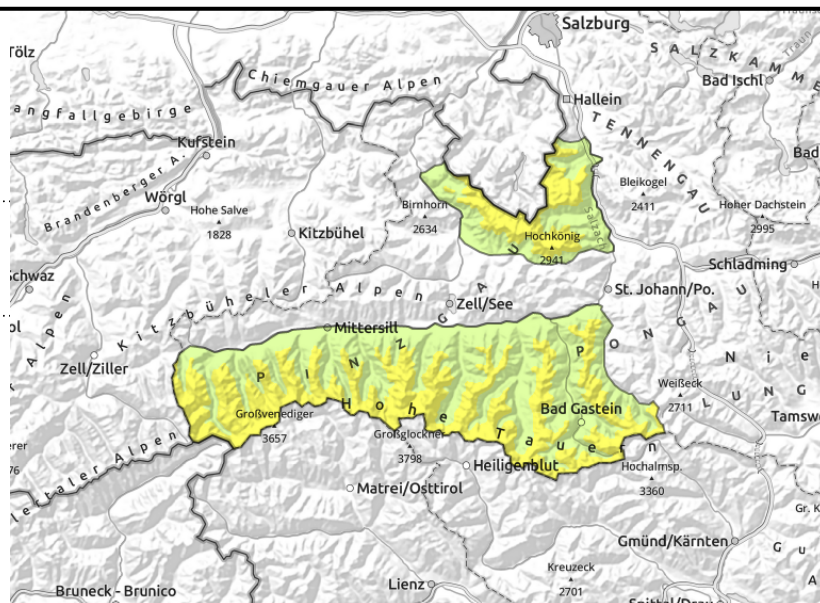


Avalanche report for Friday, 07.04.2023

Steinernes Meer, Hochkönig, Hagengebirge, Göllstock, Großvenedigergruppe Nord, Großvenedigergruppe Alpenhauptkamm, Glocknergruppe Nord, Glocknergruppe Alpenhauptkamm, Goldberggruppe Nord, Goldberggruppe Alpenhauptkamm



possible weak layer at high alpine altitudes bordering rain crust, blanketed by fresh snow/drifts



Isolated danger zones in old snow, caution urged towards high-altitude snowdrift accumulations

Avalanche danger above 2500m is MODERATE, below that altitude danger is LOW.

Isolated danger zones for slab avalanches occur on very steep slopes in all aspects, where medium releases are possible by large additional loading. Snowdrift accumulations occur near ridgelines and in gullies and bowls, particularly on south-facing slopes, where triggering is possible even by minimum additional loading (possibly growing if deeper layers are triggered).

Below 2400 m, isolated small-to-medium sized glide-snow avalanches cannot be ruled out.

Snowpack structure

At high altitudes there is about 10-20 cm of fresh snow, on Friday a bit more will come. A melt-freeze crust has formed up to high altitudes on sunny slopes.

At high altitudes there are often weak layer in transitions from the old snowpack into the fresh snow from the latest bout of precipitation. Old snowdrift masses atop the weak layers are unlikely to trigger.

Weather

On Friday cloudbanks will move in from the west, visibility will deteriorate particularly in the Pinzgau. As of midday in the regions west of the Hochkönig, rainfall and snowfall (above 1000m) can be expected. Winds will be light to moderate from west to north. At 2000 m: -4 degrees; at 3000 m -11 degrees.

Outlook

The snowdrift problem will intensify as a result of fresh snow and wind.

Avalanche problems



Danger ratings



Expositions

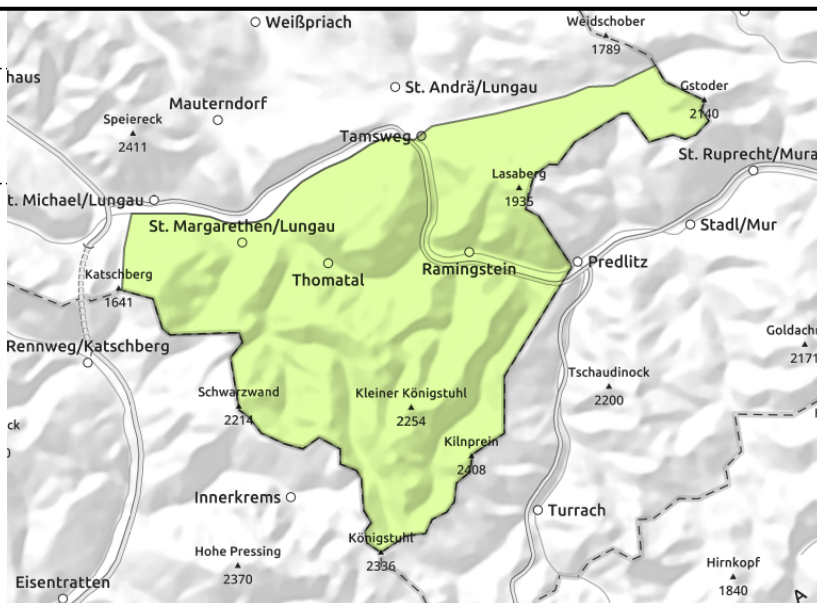


Avalanche report for Friday, 07.04.2023

Nockberge



caution on very steep slopes, esp. in transitions from shallow to deep snow



Few danger zones in extremely steep terrain

Avalanche danger is LOW.

There are only few small danger zones due to fresh snowdrift accumulations in extremely steep ridgeline terrain and in gullies, where releases are possible.

Snowpack structure

The snowpack is thoroughly wet and weakened at ground level by expansively metamorphosed snow. The small amount of fresh snow from last week has settled and become encrusted. In exposed terrain there are fresh drifts deposited by W/N winds.

Weather

On Friday, dry in the Nockberge but little sunshine. Winds will be light to moderate from west to north. At 2000 m: -4 degrees.

Outlook

No significant change expected.

Translated by Jeffrey McCabe, www.creativtrans.com

Avalanche problems



Danger ratings



Expositions

