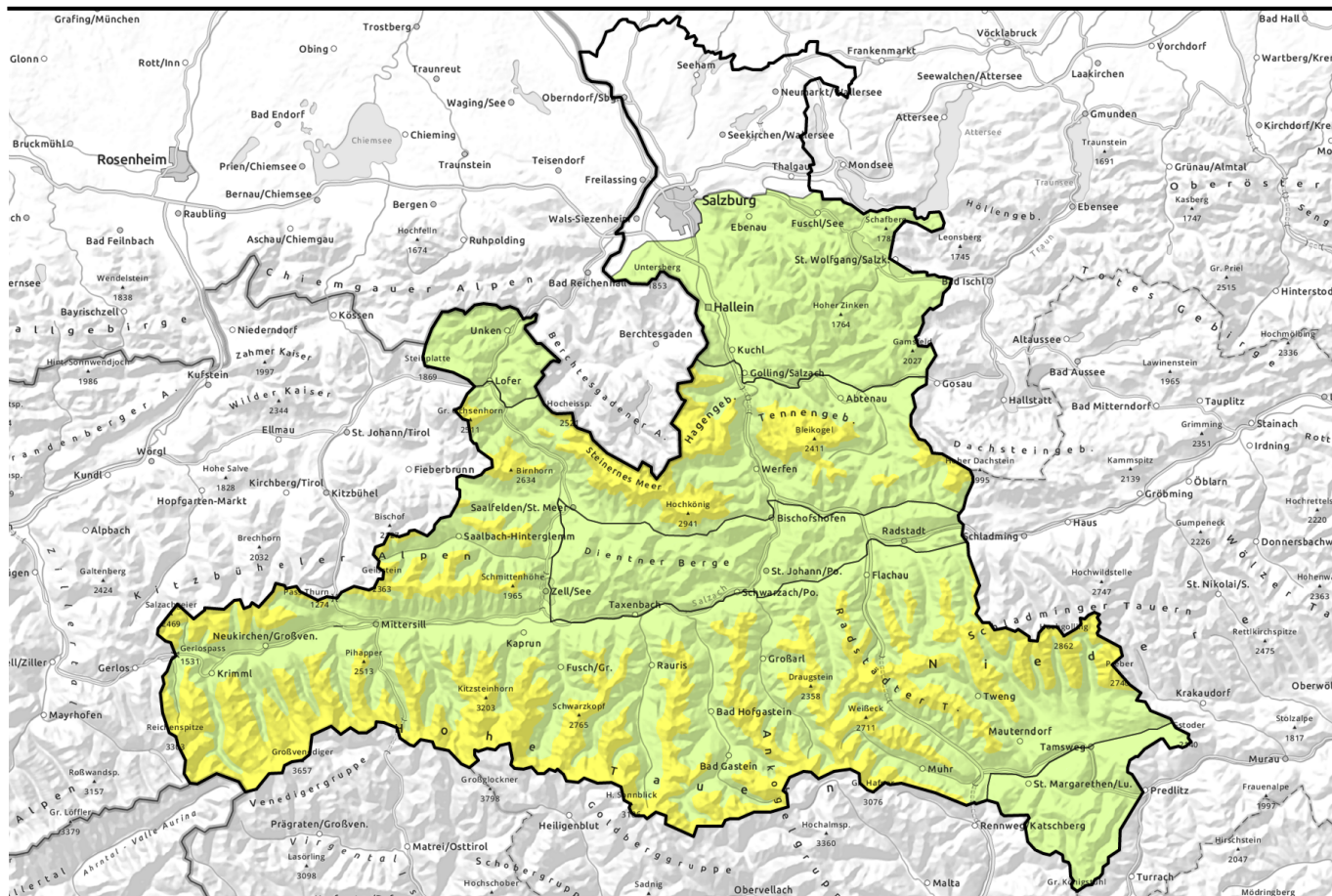



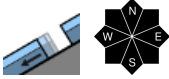
Avalanche report for Thursday, 06.04.2023




Trigger-sensitive snowdrifts in some places

- 

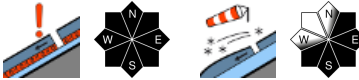
Untersbergstock, Chiemgauer Alpen, Heutal, Reiteralpe, Dientner Grasberge, Pongauer Grasberge, Osterhorngruppe, Gamsfeldgruppe




- 

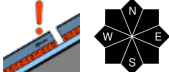
2500 m

Loferer und Leoganger Steinberge, Tennengebirge, Gosaukamm, Steinernes Meer, Hochkönig, Hagengebirge, Göllstock, Oberpinzgauer Grasberge, Großvenedigergruppe Nord, Großvenedigergruppe Alpenhauptkamm, Glocknergruppe Nord, Glocknergruppe Alpenhauptkamm, Goldberggruppe Nord, Goldberggruppe Alpenhauptkamm, Niedere Tauern Nord, Niedere Tauern Alpenhauptkamm, Niedere Tauern Süd, Ankogelgruppe, Muhr, Kitzbüheler Alpen, Glemmtal



- 

Nockberge



Avalanche problems



Danger ratings



Expositions

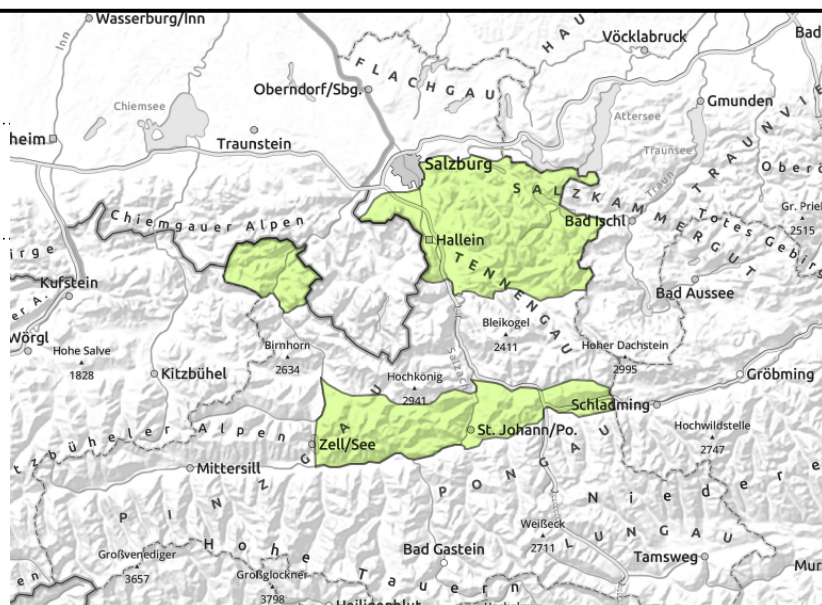


Avalanche report for Thursday, 06.04.2023

Untersbergstock, Chiemgauer Alpen, Heutal, Reiteralpe, Dientner Grasberge, Pongauer Grasberge, Osterhorngruppe, Gamsfeldgruppe



circumvent zones below glide cracks



Few danger zones in extremely steep terrain

Avalanche danger is LOW.

There is low danger from naturally triggered glide-snow avalanches which can release at any time of day or night in extremely steep zones which have not yet discharged.

Due to snowdrifts there are only few danger zones. Small slab avalanches are most likely in extremely steep ridgeline terrain esp. by large additional loading.

Snowpack structure

Atop a thoroughly wet old snowpack there lie a few cm of bonded fresh snow. In exposed terrain there are shallow snowdrifts generated by W/N winds. No indications of weak layers inside the snowpack, the only fracture point is the weak fundament itself.

Weather

On Thursday, frequent sunshine, some cloudbanks, it will remain dry. Good visibility. Winds will be light to moderate from the northwest. At 2000 m: -7 to -5 degrees.

Outlook

On Friday no significant change expected.

Avalanche problems



Danger ratings

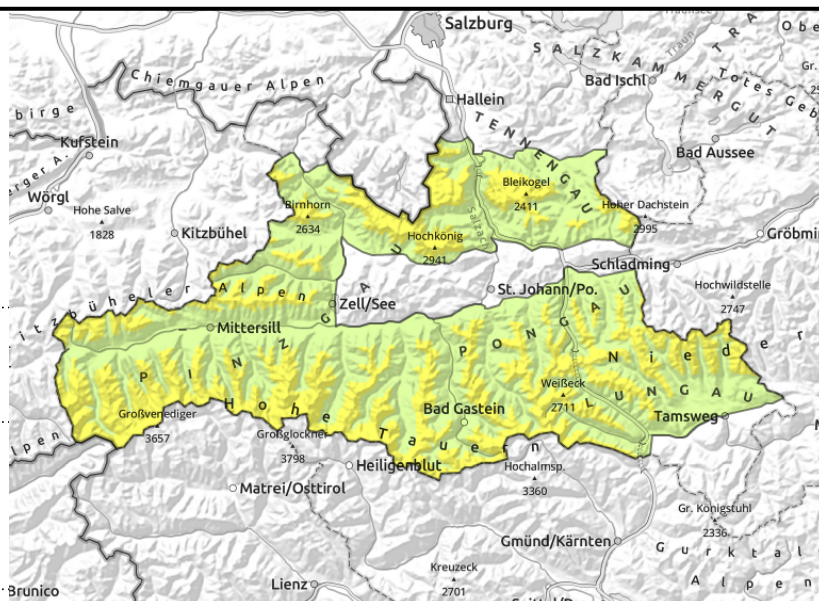


Expositions



Avalanche report for Thursday, 06.04.2023

Loferer und Leoganger Steinberge, Tennengebirge, Gosaukamm, Steinernes Meer, Hochkönig, Hagengebirge, Göllstock, Oberpinzgauer Grasberge, Großvenedigergruppe Nord, Großvenedigergruppe Alpenhauptkamm, Glocknergruppe Nord, Glocknergruppe Alpenhauptkamm, Goldberggruppe Nord, Goldberggruppe Alpenhauptkamm, Niedere Tauern Nord, Niedere Tauern Alpenhauptkamm, Niedere Tauern Süd, Ankogelgruppe, Muhr, Kitzbüheler Alpen, Glemmtal



possible weak layer at high alpine altitudes bordering rain crust, blanketed by fresh snow/drifts



avoid snowdrift accumulations in steep terrain, particularly in transitions from shallow to deep snow

Isolated danger zones in old snow, caution urged towards high-altitude snowdrift accumulations

Avalanche danger above 2500m is MODERATE, below that altitude danger is LOW.

Isolated danger zones for slab avalanches occur on very steep slopes in all aspects, where medium releases are possible by large additional loading. Snowdrift accumulations occur near ridgelines and in gullies and bowls, particularly on south-facing slopes, where triggering is possible even by minimum additional loading (mostly small releases).

Below 2400 m, isolated small-to-medium sized glide-snow avalanches cannot be ruled out.

Snowpack structure

Fresh snowfall from recent days has settled well with the old snowpack due to solar radiation. In places, a superficial melt-freeze crust has formed, but in some places the drifts lie deposited atop loose layers where fractures are possible.

At high altitudes there is about 10-20 cm of fresh snowfall. Bonding deteriorates with ascending altitude. Potential fracture points for slab avalanches occur in the melt-freeze crusts of the old snow.

Weather

On Thursday, frequent sunshine, some cloudbanks, it will remain dry. Good visibility. Winds will be light to moderate from the northwest. At 2000 m: -7 to -5 degrees; at 3000 m: -12 degrees.

Outlook

As a result of fresh snowfall, the snowdrift problem will increase somewhat.

Avalanche problems



Danger ratings



Expositions

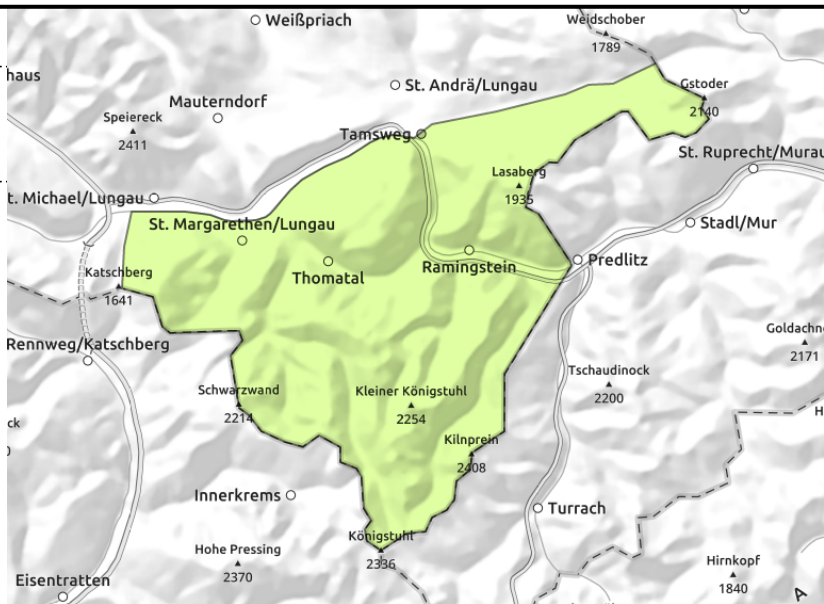


Avalanche report for Thursday, 06.04.2023

Nockberge



caution on very steep slopes, esp. in transitions from shallow to deep snow



Few danger zones in extremely steep terrain

Avalanche danger is LOW. There are only few small danger zones due to fresh snowdrift accumulations in extremely steep ridgeline terrain and in gullies, where releases are possible from one sole person.

Snowpack structure

The snowpack is thoroughly wet and weakened at ground level by expansively metamorphosed snow. The small amount of fresh snow from last week has settled and become encrusted. In exposed terrain there are fresh drifts deposited by W/N winds.

Weather

On Thursday, frequent sunshine, some cloudbanks, it will remain dry. Good visibility. Winds will be light to moderate from the northwest. At 2000 m: -7 to -5 degrees.

Outlook

On Friday no significant change expected.

Translated by Jeffrey McCabe, www.creativtrans.com

Avalanche problems



Danger ratings



Expositions

