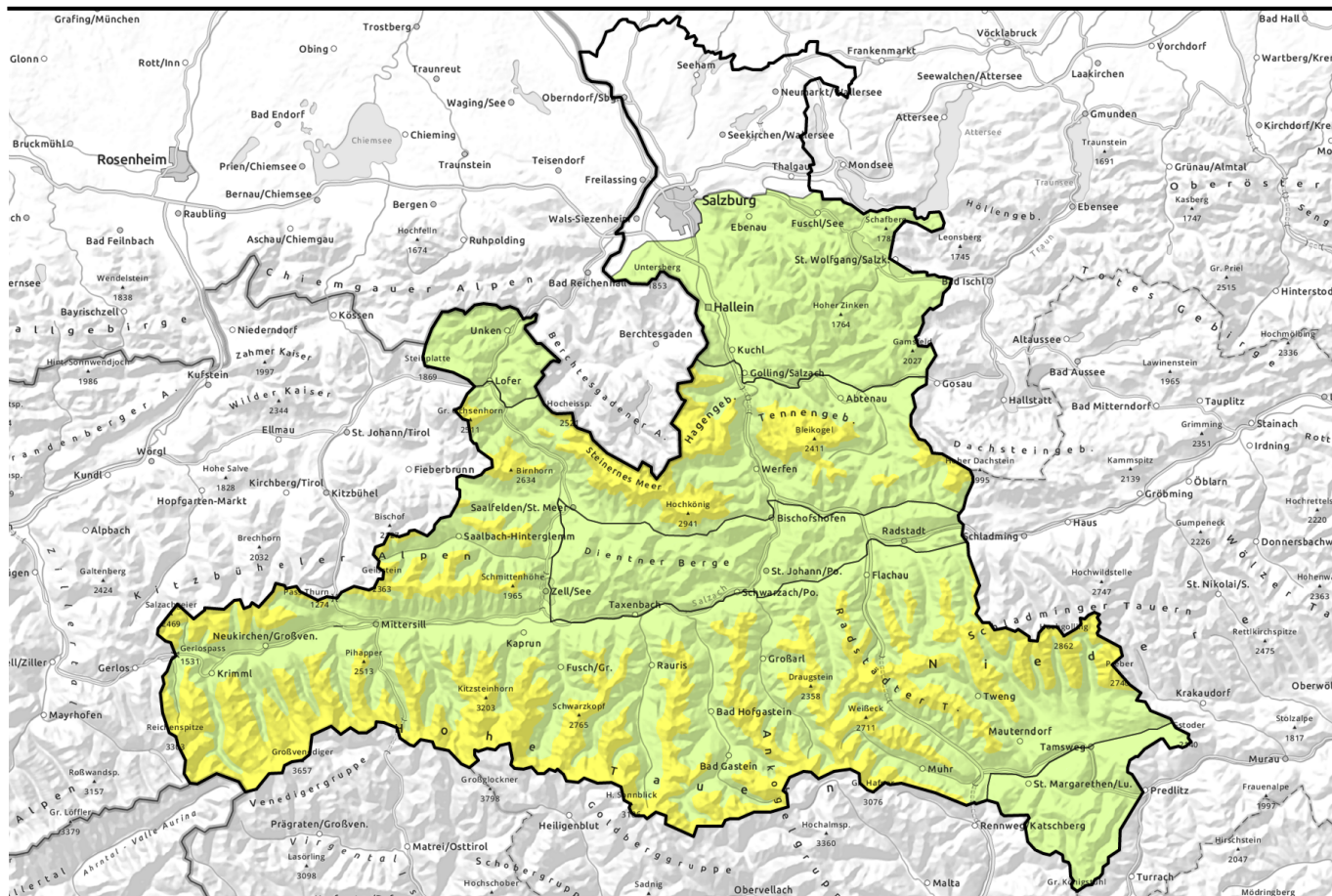


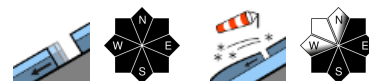
# Avalanche report for Wednesday, 05.04.2023



## Trigger-sensitive snowdrifts in some places

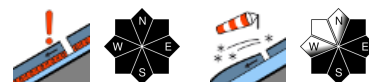


Untersbergstock, Chiemgauer Alpen, Heutal, Reiteralpe, Dientner Grasberge, Pongauer Grasberge, Osterhorngruppe, Gamsfeldgruppe

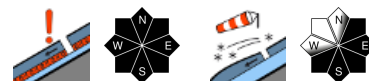


2100 m

Loferer und Leoganger Steinberge, Tennengebirge, Gosaukamm, Steinernes Meer, Hochkönig, Hagengebirge, Göllstock, Oberpinzgauer Grasberge, Großvenedigergruppe Nord, Großvenedigergruppe Alpenhauptkamm, Glocknergruppe Nord, Glocknergruppe Alpenhauptkamm, Goldberggruppe Nord, Goldberggruppe Alpenhauptkamm, Niedere Tauern Nord, Niedere Tauern Alpenhauptkamm, Niedere Tauern Süd, Ankogelgruppe, Muhr, Kitzbüheler Alpen, Glemmtal



Nockberge



### Avalanche problems



### Danger ratings



### Expositions



# Avalanche report for **Wednesday, 05.04.2023**

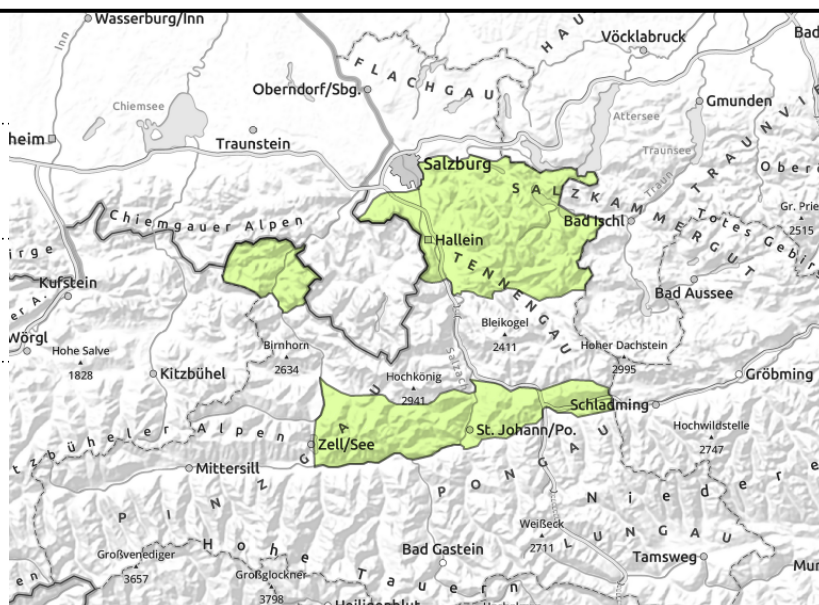
**Untersbergstock, Chiemgauer Alpen, Heutal, Reiteralpe, Dientner Grasberge, Pongauer Grasberge, Osterhorngruppe, Gamsfeldgruppe**



circumvent zones below glide cracks



avoid snowdrift accumulations in steep terrain, particularly in transitions from shallow to deep snow



## Few danger zones in extremely steep terrain

Avalanche danger is LOW. There are only few small danger zones due to fresh snowdrift accumulations in extremely steep ridgeline terrain and in gullies, where releases are possible from one sole person.

Outside of that, low danger from naturally triggered glide-snow avalanches which can release at any time of day or night in extremely steep zones which have not yet discharged. In case of solar radiation, the latest bout of fresh fallen snow can release naturally as a small superficial loose-snow avalanche.

### Snowpack structure

Atop a thoroughly wet isotherm old snowpack surface a few cm of settled snow lies deposited, depending on altitude, which is melt-freeze encrusted. In exposed terrain, shallow drifts lie deposited, generated by W/N winds. No weak layers, only the fundament shows weakness.

### Weather

Wednesday will be sunnier than Tuesday, but for a few convective clouds in the afternoon with some visibility reduction at high altitudes. However, it will remain dry. The NW winds will be light to moderate, brisker in the Tauern in the early part of the day. At 2000 m:- 9 to -7 degrees.

### Outlook

On Thursday no significant change expected.

#### Avalanche problems



#### Danger ratings

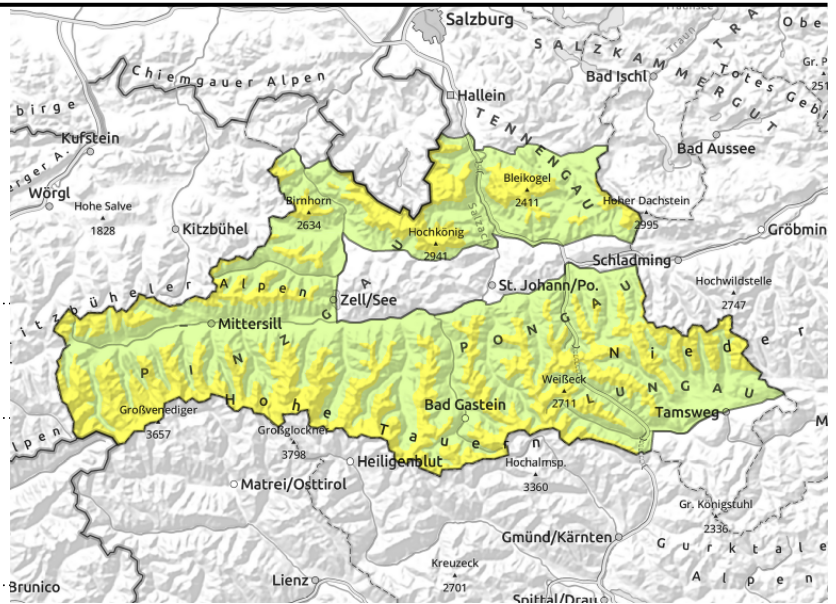


#### Expositions



# Avalanche report for **Wednesday, 05.04.2023**

**Loferer und Leoganger Steinberge, Tennengebirge, Gosaukamm, Steinernes Meer, Hochkönig, Hagengebirge, Göllstock, Oberpinzgauer Grasberge, Großvenedigergruppe Nord, Großvenedigergruppe Alpenhauptkamm, Glocknergruppe Nord, Glocknergruppe Alpenhauptkamm, Goldberggruppe Nord, Goldberggruppe Alpenhauptkamm, Niedere Tauern Nord, Niedere Tauern Alpenhauptkamm, Niedere Tauern Süd, Ankogelgruppe, Muhr, Kitzbüheler Alpen, Glemmtal**



2100 m



possible weak layer at high alpine altitudes bordering rain crust, blanketed by fresh snow/drifts



avoid snowdrift accumulations in steep terrain, particularly in transitions from shallow to deep snow

## Isolated danger zones in old snow, caution urged towards high-altitude snowdrift accumulations

Avalanche danger above 2100m is MODERATE, below that altitude danger is LOW.

Danger zones for slab avalanches occur on very steep slopes in all aspects, where medium releases are possible by large additional loading. Snowdrift accumulations occur near ridgelines and in gullies and bowls, particularly on south-facing slopes, where triggering is possible even by minimum additional loading (mostly small releases).

Due to solar radiation, naturally triggered loose-snow avalanches are still possible in extremely steep terrain. Below 2400m isolated small-to-medium sized glide-snow avalanches cannot be ruled out.

### Snowpack structure

Fresh snowfall from recent day has settled well with the old snowpack due to solar radiation. In places, a superficial melt-freeze crust has formed, but in some places the drifts lie deposited atop loose layers where fractures are possible.

At high altitudes there is about 10-20 cm of fresh snowfall. Bonding deteriorates with ascending altitude. Potential fracture points for slab avalanches occur in the melt-freeze crusts of the old snow.

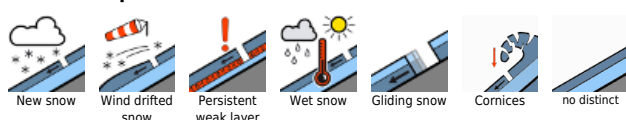
### Weather

Wednesday will be sunnier than Tuesday, but for a few convective clouds in the afternoon with some visibility reduction at high altitudes. However, it will remain dry. The NW winds will be light to moderate, brisker in the Tauern in the early part of the day. At 2000 m: -9 to -7 degrees.

### Outlook

On Thursday no significant change expected.

#### Avalanche problems



#### Danger ratings



#### Expositions



# Avalanche report for **Wednesday, 05.04.2023**

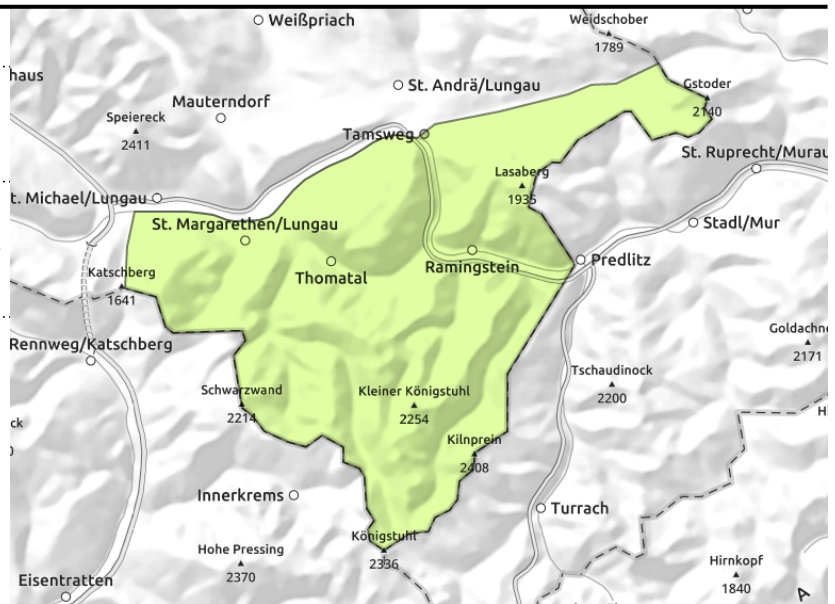
## Nockberge



caution on very steep slopes, esp. in transitions from shallow to deep snow



avoid snowdrift accumulations in steep terrain, particularly in transitions from shallow to deep snow



## Few danger zones in extremely steep terrain

Avalanche danger is LOW. There are only few small danger zones due to fresh snowdrift accumulations in extremely steep ridgeline terrain and in gullies, where releases are possible from one sole person, mostly by large additional loading.

### Snowpack structure

The snowpack is thoroughly wet and weakened at ground level by expansively metamorphosed snow. The small amount of fresh snow from last week has settled and become encrusted. Solar radiation softens the snowpack during the course of the day. In exposed terrain there are fresh drifts deposited by W/N winds.

### Weather

Wednesday will be sunnier than Tuesday, but for a few convective clouds in the afternoon with some visibility reduction at high altitudes. However, it will remain dry. The NW winds will be light to moderate, brisker in the Tauern in the early part of the day. At 2000 m:- 9 to -7 degrees.

### Outlook

On Thursday no significant change expected.

Translated by Jeffrey McCabe, [www.creativtrans.com](http://www.creativtrans.com)

### Avalanche problems



### Danger ratings



### Expositions

