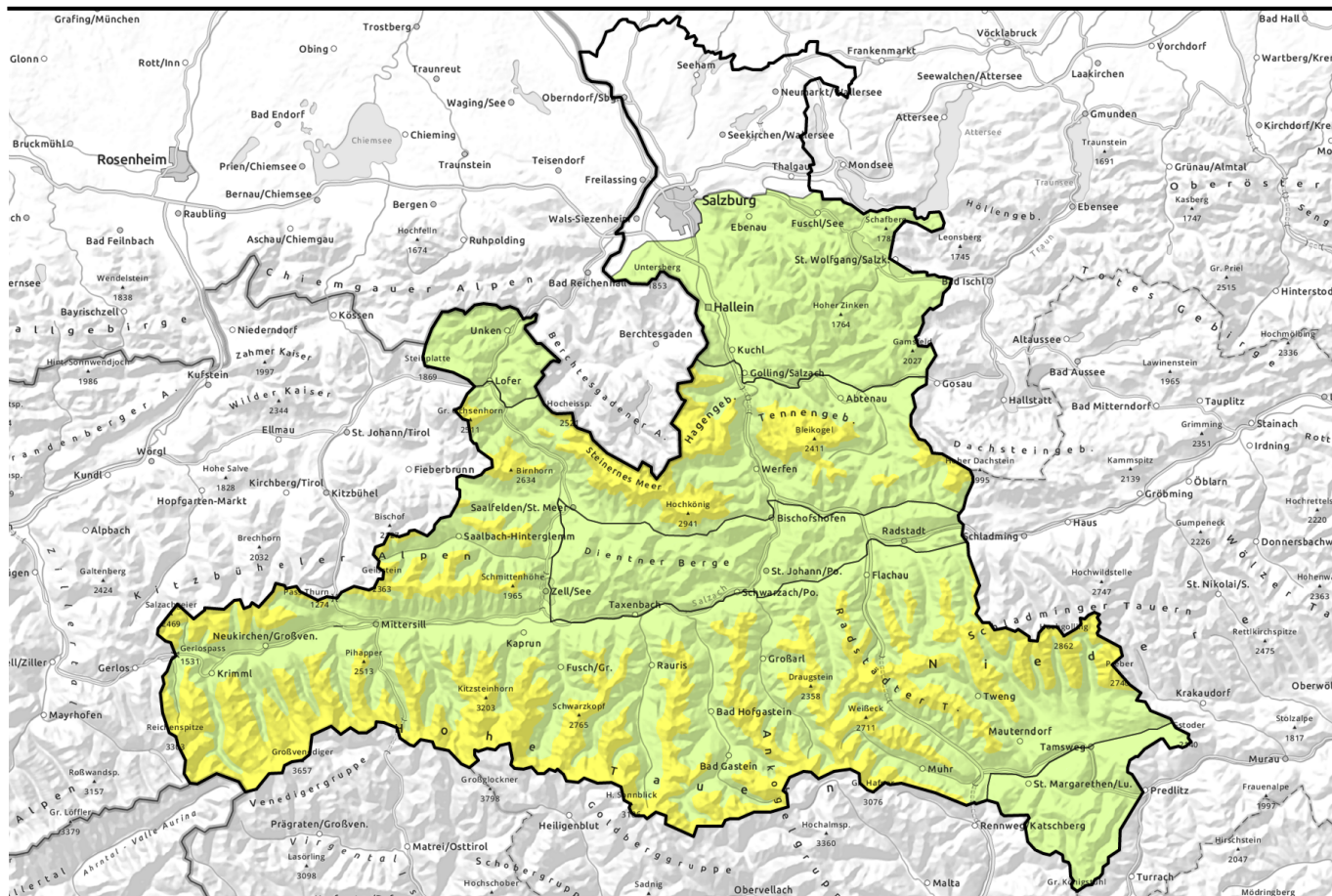


Avalanche report for Tuesday, 04.04.2023



Moderate danger at high altitudes

	<p>Osterhorngruppe, Gamsfeldgruppe, Untersbergstock, Chiemgauer Alpen, Heutal, Reiteralpe, Dientner Grasberge, Pongauer Grasberge</p>	
	<p>2100 m Loferer und Leoganger Steinberge, Tennengebirge, Gosaukamm, Steinernes Meer, Hochkönig, Hagengebirge, Göllstock, Oberpinzgauer Grasberge, Großvenedigergruppe Nord, Großvenedigergruppe Alpenhauptkamm, Glocknergruppe Nord, Glocknergruppe Alpenhauptkamm, Goldberggruppe Nord, Goldberggruppe Alpenhauptkamm, Niedere Tauern Nord, Niedere Tauern Alpenhauptkamm, Niedere Tauern Süd, Ankogelgruppe, Muhr, Kitzbüheler Alpen, Glemmtal</p>	
	<p>Nockberge</p>	

Avalanche problems



Danger ratings



Expositions



Avalanche report for Tuesday, 04.04.2023

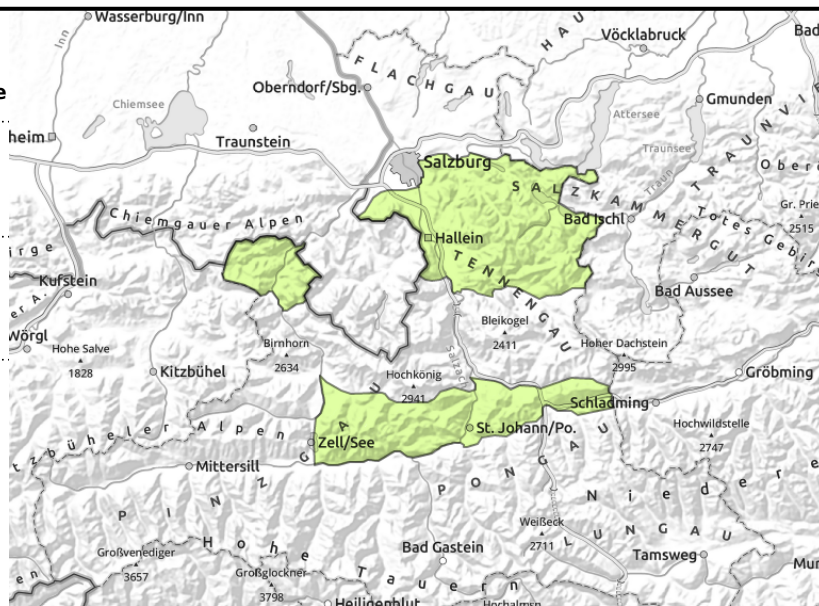
Osterhorngruppe, Gamsfeldgruppe, Untersbergstock, Chiemgauer Alpen, Heutal, Reiteralpe, Dientner Grasberge, Pongauer Grasberge



seldom, in extremely steep terrain



near ridgelines and in steep gullies, small danger zones



Few danger zones in extremely steep terrain

Avalanche danger is LOW. There are only few small danger zones due to fresh snowdrift accumulations in extremely steep ridgeline terrain and in gullies. Outside of that, low danger from naturally triggered glide-snow avalanches which can release at any time of day or night in extremely steep zones which have not yet discharged. In case of solar radiation, the latest bout of fresh fallen snow can release naturally as a small superficial loose-snow avalanche.

Snowpack structure

Atop a thoroughly wet 0-degree isotherm old snowpack surface a few cm of settled snow lies deposited from the weekend, depending on altitude, which is melt-freeze encrusted. Maximum 10 cm of fresh snow atop of that. In exposed terrain, shallow drifts lie deposited, generated by W/N winds. No weak layers, only the fundament shows weakness.

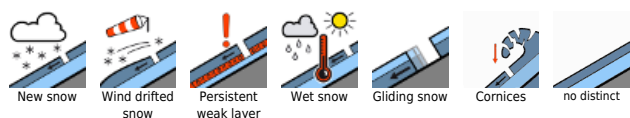
Weather

On Tuesday, adequate visibility, mostly sunshine. The northerly winds will be brisk to strong, on peaks and ridges of the Tauern and Nockberge reaching 50 km/hr. At 2000 m: -11 degrees; at 3000 m: -13 degrees.

Outlook

On Wednesday no significant change expected. Cold. Sunshine. Winds will not disturb.

Avalanche problems



Danger ratings

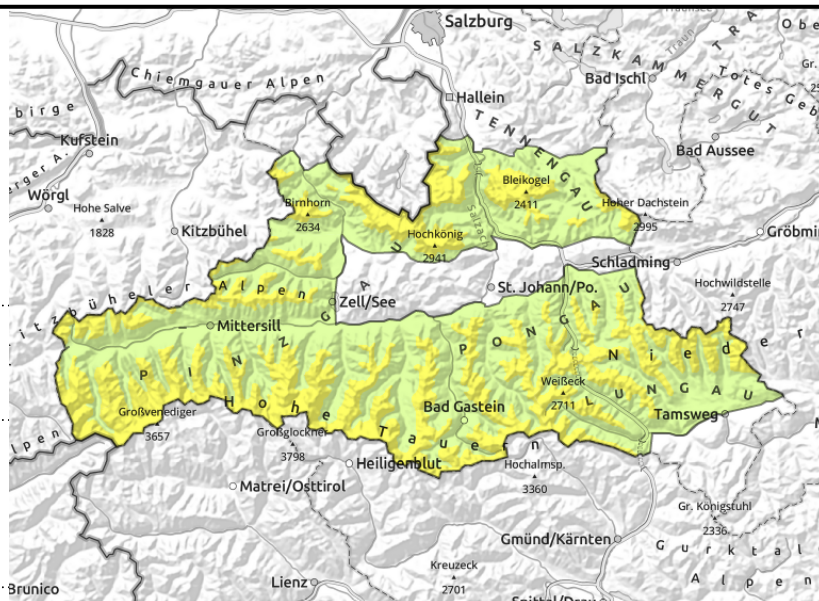


Expositions



Avalanche report for Tuesday, 04.04.2023

Loferer und Leoganger Steinberge, Tennengebirge, Gosaukamm, Steinernes Meer, Hochkönig, Hagengebirge, Göllstock, Oberpinzgauer Grasberge, Großvenedigergruppe Nord, Großvenedigergruppe Alpenhauptkamm, Glocknergruppe Nord, Glocknergruppe Alpenhauptkamm, Goldberggruppe Nord, Goldberggruppe Alpenhauptkamm, Niedere Tauern Nord, Niedere Tauern Alpenhauptkamm, Niedere Tauern Süd, Ankogelgruppe, Muhr, Kitzbüheler Alpen, Glemmtal



possible weak layer at high alpine altitudes bordering rain crust, blanketed by fresh snow/drifts



near ridgelines, behind abrupt drops in the terrain, in gullies, steep bowls

Fresh snowdrift accumulations at high altitudes

Avalanche danger above 2100m is MODERATE, below that altitude danger is LOW. Trigger points for slab avalanches exist in high alpine regions on very steep, also distant from ridgelines where the fresh snowdrifts in NW/N/SE facing steep terrain and gullies can release, sometimes by minimum additional loading. In case of solar radiation, naturally triggered small superficial loose-snow avalanches are possible in extremely steep terrain. Below 2400m, isolated small-to-medium glide-snow avalanches cannot be ruled out.

Snowpack structure

After a mild Thursday with rainfall up to 2800 m, temperatures have incrementally dropped, the snowfall level also descended amid intermittent rainfall and snowfall. Strong springtime sun settled the fresh snow and generated crusts. W/NW winds (in the Tauern also southerly foehn wind) transported the snow. Atop this base at high altitudes there is 10-15 cm of fresh cold snowfall which was compressed by northerly winds or transported on Monday. Bonding of fresh snow deteriorates with ascending altitude. Potential fracture points for slab avalanches exist in the melt-freeze crusts of the old snowpack and in the loose snow which blankets them.

Weather

On Tuesday, adequate visibility, mostly sunshine. The northerly winds will be brisk to strong, on peaks and ridges of the Tauern and Nockberge reaching 50 km/hr. At 2000 m: -11 degrees; at 3000 m: -13 degrees.

Outlook

On Wednesday no significant change expected. Cold. Sunshine. Winds will not disturb.

Avalanche problems



Danger ratings



Expositions



Avalanche report for Tuesday, 04.04.2023

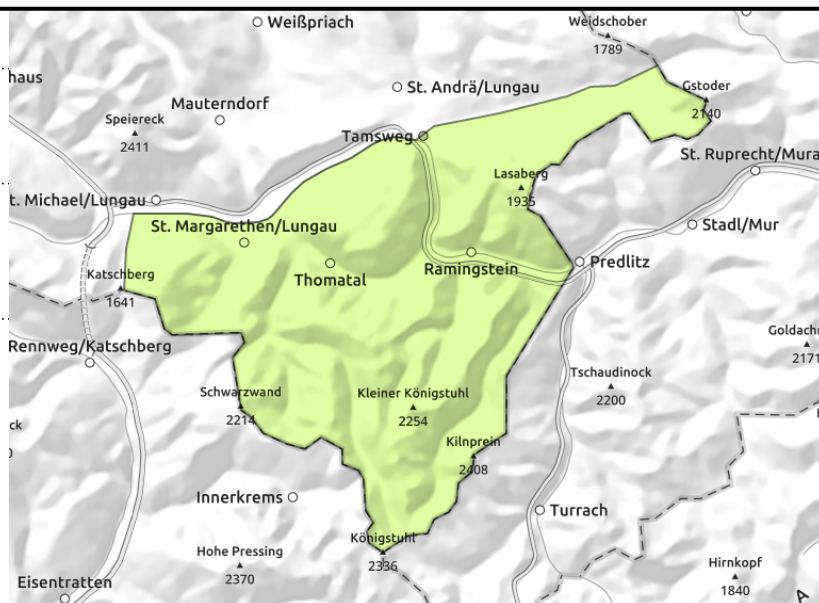
Nockberge



weak snowpack fundament, triggerable at the edges of gullies and bowls



near ridgelines and distant from them, behind abrupt drops in the terrain



Few danger zones in extremely steep terrain

Avalanche danger is LOW, only very few small danger zones exist. On the one hand, due to the weak old snowpack fundament from which naturally triggered avalanches are possible in extremely steep terrain, on the other through fresh snowdrift accumulations in extremely steep ridgeline terrain and in gullies where avalanches can be triggered by large additional loading.

Snowpack structure

The snowpack is thoroughly wet and 0° isotherm up to high altitudes and weakened at ground level by expansively metamorphosed snow. The small amount of fresh snow from last week has settled and become encrusted. In exposed terrain there are fresh drifts deposited by W/N winds.

Weather

On Tuesday, adequate visibility, mostly sunshine. The northerly winds will be brisk to strong, on peaks and ridges of the Tauern and Nockberge reaching 50 km/hr. At 2000 m: -11 degrees; at 3000 m: -13 degrees.

Outlook

On Wednesday no significant change expected. Cold. Sunshine. Winds will not disturb.

Translated by Jeffrey McCabe, www.creativtrans.com

Avalanche problems



Danger ratings



Expositions

