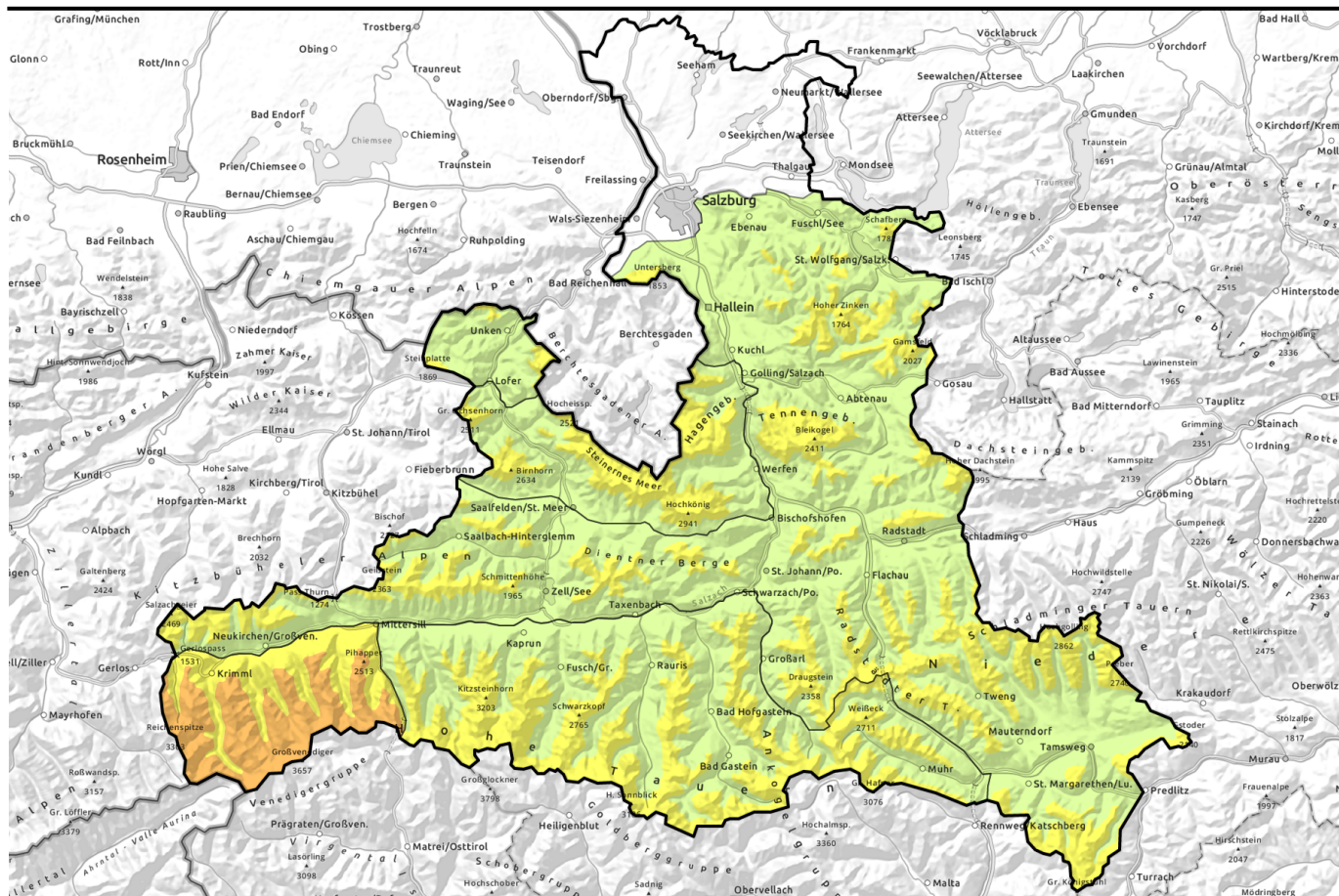


Avalanche report for Sunday, 02.04.2023

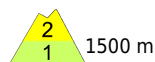
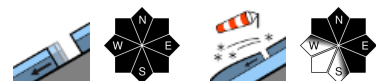


Wind impact and fresh snow at high altitudes



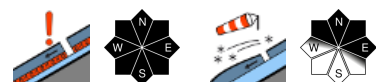
1500 m

Niedere Tauern Nord, Niedere Tauern Alpenhauptkamm, Niedere Tauern Süd, Nockberge, Dientner Grasberge, Oberpinzgauer Grasberge, Kitzbüheler Alpen, Glemmtal, Pongauer Grasberge, Osterhorngruppe, Gamsfeldgruppe, Untersbergstock, Chiemgauer Alpen, Heutal, Reiteralpe, Tennengebirge, Gosaukamm



1500 m

Goldberggruppe Nord, Ankogelgruppe, Muhr, Loferer und Leoganger Steinberge, Steinernes Meer, Hochkönig, Hagengebirge, Göllstock, Goldberggruppe Alpenhauptkamm, Glocknergruppe Nord, Glocknergruppe Alpenhauptkamm



2500 m

Großvenedigergruppe Nord, Großvenedigergruppe Alpenhauptkamm



Avalanche problems



Danger ratings

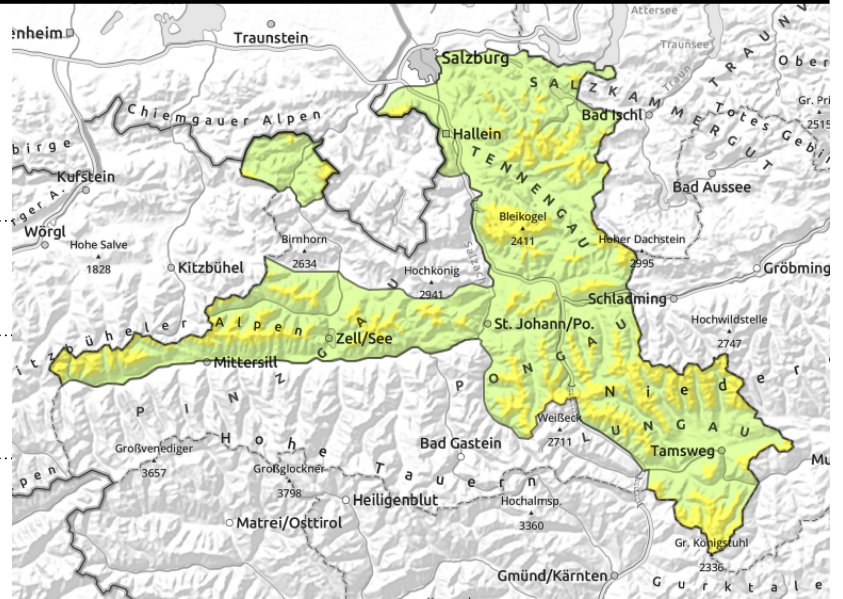


Expositions



Avalanche report for Sunday, 02.04.2023

Niedere Tauern Nord, Niedere Tauern Alpenhauptkamm, Niedere Tauern Süd, Nockberge, Dientner Grasberge, Oberpinzgauer Grasberge, Kitzbüheler Alpen, Glemmtal, Pongauer Grasberge, Osterhorngruppe, Gamsfeldgruppe, Untersbergstock, Chiemgauer Alpen, Heutal, Reiteralpe, Tennengebirge, Gosaukamm



1500 m



possible at any time of day or night



small-area, above 2000 m

Fresh snow atop thoroughly wet snowpack

Avalanche danger above 1500m is MODERATE, below that altitude danger is LOW.

At high altitudes the danger stems from small fresh snowdrift masses which can be triggered as small-to-medium sized slab avalanches even by the weight of one sole person. Danger zones occur esp. in steep ridgeline terrain and in gullies, esp in N/E aspect. Also, naturally triggered small-to-medium glide-snow avalanches are possible at any time of day or night.

Snowpack structure

Since mild Thursday with rainfall up to 2800 m, temperatures have incrementally dropped, the snowfall level also descended amid intermittent rainfall and snowfall. The fresh snow is accumulating above 1500m significantly. At high altitudes in the Northern Alps there has been 15-25 cm of fresh snow registered. Bonding of fresh snow to the base deteriorates with ascending altitude. Fresh drifts generated by southerly foehn wind on Friday lie deposited on W/NW facing slopes. The snowpack at intermediate altitudes, if there is one, is thoroughly wet and 0° isotherm.

Weather

On Sunday visibility will rapidly deteriorate, in the Northern Alps it will be poor right from the start. Fog, clouds, rain and snowfall will dominate as of midday in the Tauern and Nockberge. Snowfall level will lie at 1000-1600 m and descend somewhat by evening. At high and high alpine altitudes, about 10 cm of fresh snow is expected by evening. At 2000 m: -3 degrees; at 3000 m: -9 degrees. Winds will be NW, reaching 50 km/hr by evening.

Outlook

On Monday temperatures will drop further. Strong to stormy NW winds. Heed snowdrifts!

Avalanche problems



Danger ratings



Expositions



Avalanche report for Sunday, 02.04.2023

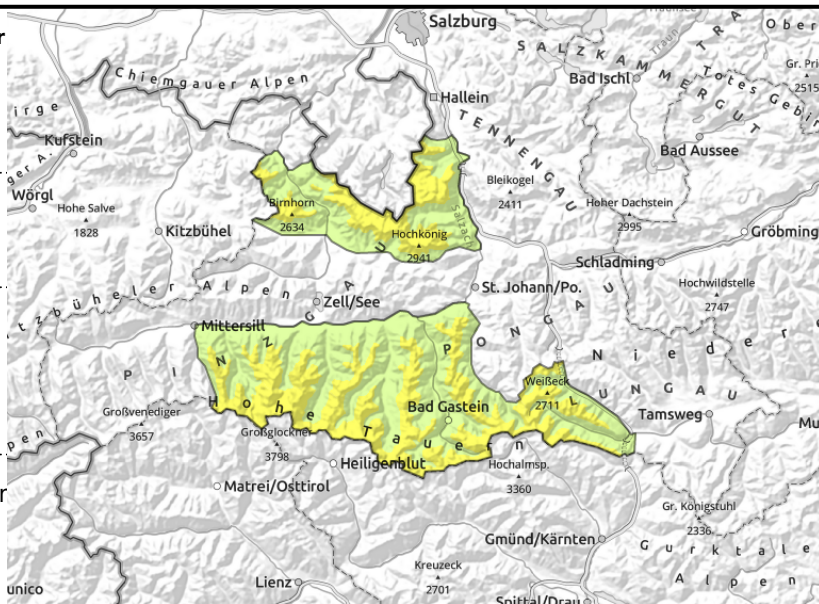
Goldberggruppe Nord, Ankogelgruppe, Muhr, Loferer und Leoganger Steinberge, Steinernes Meer, Hochkönig, Hagengebirge, Göllstock, Goldberggruppe Alpenhauptkamm, Glocknergruppe Nord, Glocknergruppe Alpenhauptkamm



possible weak layer at high alpine altitudes bordering rain crust, blanketed by fresh snow/drifts



at high altitudes fresh and older drifts require attentiveness



Heed fresh snow and fresh snowdrifts

Avalanche danger above 1500m is MODERATE, below that altitude danger is LOW. At high altitudes, caution towards older drifts is required, they are blanketed and occur esp. on NW/N/E facing slopes both near to and distant from ridgelines, behind abrupt drops in the terrain and in gullies and bowls. A small/medium slab avalanche can be triggered in steep terrain even by one single person. Below 2400m glide-snow avalanches threaten, possible at any time of day or night.

Snowpack structure

Since mild Thursday with rainfall up to 2800 m, temperatures have incrementally dropped, the snowfall level also descended amid intermittent rainfall and snowfall. The fresh snow is accumulating above 1500m significantly. At high altitudes in the Northern Alps there has been 15-25 cm of fresh snow registered. Bonding of fresh snow to the base deteriorates with ascending altitude. Fresh drifts generated by southerly foehn wind on Friday lie deposited on W/NW facing slopes. The snowpack at intermediate altitudes, if there is one, is thoroughly wet and 0° isotherm.

Weather

On Sunday visibility will rapidly deteriorate, in the Northern Alps it will be poor right from the start. Fog, clouds, rain and snowfall will dominate as of midday in the Tauern. Snowfall level will lie at 1000-1600 m and descend somewhat by evening. At high and high alpine altitudes, about 10 cm of fresh snow is expected by evening. At 2000 m: -3 degrees; at 3000 m: -9 degrees. Winds will be NW, reaching 50 km/hr by evening.

Outlook

On Monday temperatures will drop further. Strong to stormy NW winds. Heed snowdrifts!

Avalanche problems



Danger ratings



Expositions



Avalanche report for Sunday, 02.04.2023

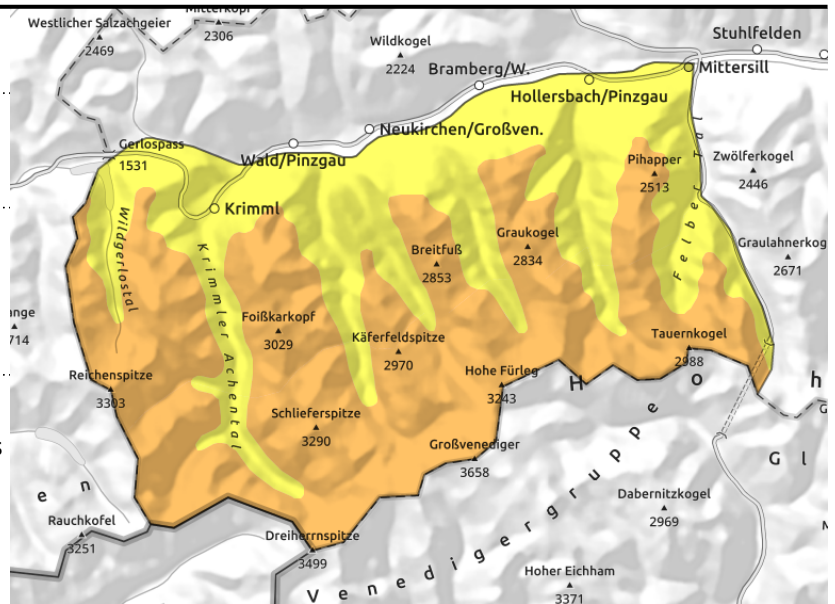
Großvenedigergruppe Nord, Großvenedigergruppe Alpenhauptkamm



possible weak layer at high alpine altitudes bordering rain crust, blanketed by fresh snow/drifts



near to and distant from ridgelines, behind abrupt drops in the terrain, easily triggered



Heed fresh snow and fresh snowdrifts

Avalanche danger increases with ascending altitude: above 1500 m MODERATE, above 2400m CONSIDERABLE. In high and high alpine regions the fresh snow and drifts require attentiveness, they are often blanketed and occur esp. on NW/N/E facing slopes both near to and distant from ridgelines, behind abrupt drops in the terrain and in gullies and bowls. A small/medium slab avalanche can be triggered in steep terrain even by one single person. Below 2400m glide-snow avalanches threaten, possible at any time of day or night.

Snowpack structure

Since mild Thursday with rainfall up to 2800 m, temperatures have incrementally dropped, the snowfall level also descended amid intermittent rainfall and snowfall. The fresh snow is accumulating above 1500m significantly. At high altitudes in the Northern Alps there has been 15-25 cm of fresh snow registered. Bonding of fresh snow to the base deteriorates with ascending altitude. Fresh drifts generated by southerly foehn wind on Friday lie deposited on W/NW facing slopes. The snowpack at intermediate altitudes, if there is one, is thoroughly wet and 0° isotherm.

Weather

On Sunday visibility will rapidly deteriorate, in the Northern Alps it will be poor right from the start. Fog, clouds, rain and snowfall will dominate as of midday in the Tauern and Nockberge. Snowfall level will lie at 1000-1600 m and descend somewhat by evening. At high and high alpine altitudes, about 10 cm of fresh snow is expected by evening. At 2000 m: -3 degrees; at 3000 m: -9 degrees. Winds will be NW, reaching 50 km/hr by evening.

Outlook

On Monday temperatures will drop further. Strong to stormy NW winds. Heed snowdrifts!

Translated by Jeffrey McCabe, www.creativtrans.com

Avalanche problems



Danger ratings



Expositions

