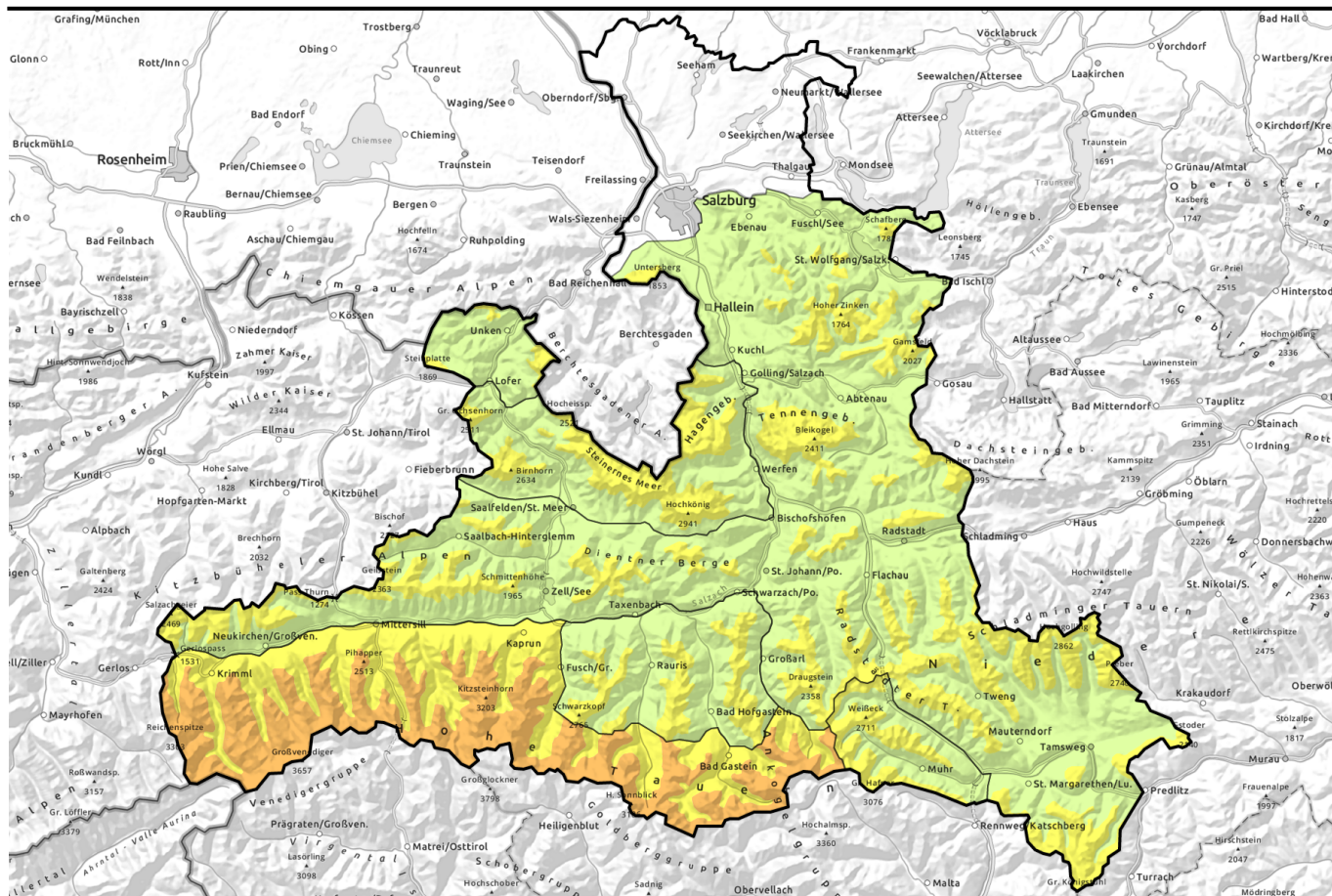


Avalanche report for Saturday, 01.04.2023



Wet snow down below, snowdrift problem up above

	<p>1500 m Niedere Tauern Nord, Niedere Tauern Alpenhauptkamm, Niedere Tauern Süd, Nockberge, Dientner Grasberge, Oberpinzgauer Grasberge, Kitzbüheler Alpen, Glemmtal, Pongauer Grasberge, Osterhorngruppe, Gamsfeldgruppe, Untersbergstock, Chiemgauer Alpen, Heutal, Reiteralpe, Tennengebirge, Gosaukamm</p>	
	<p>1500 m Goldberggruppe Nord, Ankogelgruppe, Muhr, Loferer und Leoganger Steinberge, Steinernes Meer, Hochkönig, Hagengebirge, Göllstock</p>	
	<p>2500 m Großvenedigergruppe Nord, Großvenedigergruppe Alpenhauptkamm, Glocknergruppe Nord, Glocknergruppe Alpenhauptkamm, Goldberggruppe Alpenhauptkamm</p>	

Avalanche problems



Danger ratings

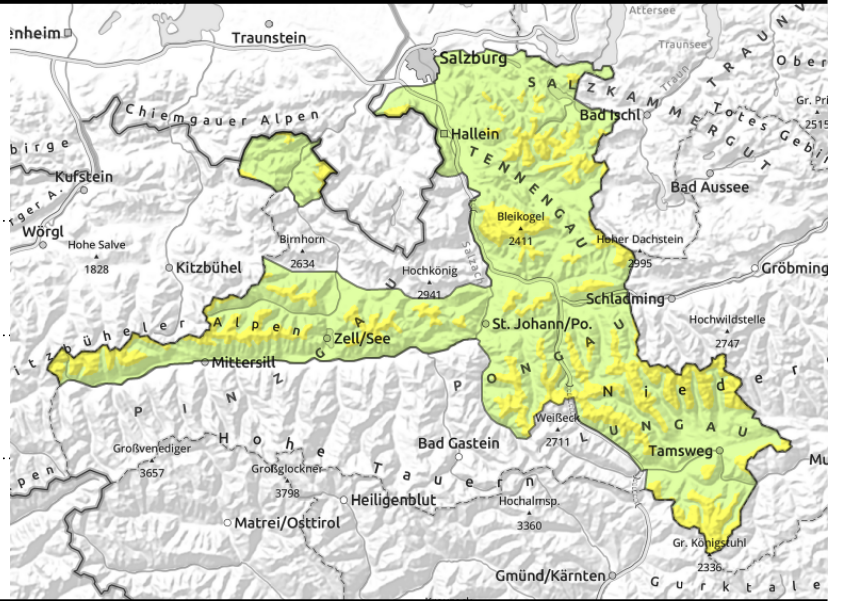


Expositions



Avalanche report for **Saturday, 01.04.2023**

Niedere Tauern Nord, Niedere Tauern Alpenhauptkamm, Niedere Tauern Süd, Nockberge, Dientner Grasberge, Oberpinzgauer Grasberge, Kitzbüheler Alpen, Glemmtal, Pongauer Grasberge, Osterhorngruppe, Gamsfeldgruppe, Untersbergstock, Chiemgauer Alpen, Heutal, Reiteralpe, Tennengebirge, Gosaukamm



1500 m



possible at any time of day or night



heed rain impact at intermediate altitudes

Thoroughly wet snowpack plus rain showers up to 1800m

Avalanche danger above 1500m is MODERATE, below that altitude danger is LOW.

Main danger: small-to-medium glide-snow avalanches which can trigger at any time of day or night. Superficial wet-avalanches also possible.

Snowpack structure

On Thursday it was very warm, rainfall extended up to 2800m. A thin ice crust formed. The snowpack (insofar as there is one) is 0-degree isotherm. Above 2000 m there was a few cm of fresh cold snow registered. Bonding to the base deteriorates with ascending altitude. Southerly foehn wind on Friday transported some of the fresh fallen snow.

Weather

On Saturday, variable visibility, repeated bouts of snow showers and rain. Snowfall level will lie between 1400 and 1800 m. Winds will be blowing at 30-50 km/hr in exposed zones, up to 70 km/hr in the Northern Alps at high altitudes. At 2000m: -3 to 0 degrees; at 3000m: -9 degrees.

Outlook

Little change expected. Depending on altitude, snowdrifts and wet-snow problem requires attentiveness. Poor visibility makes on-site assessment more difficult.

Avalanche problems



Danger ratings

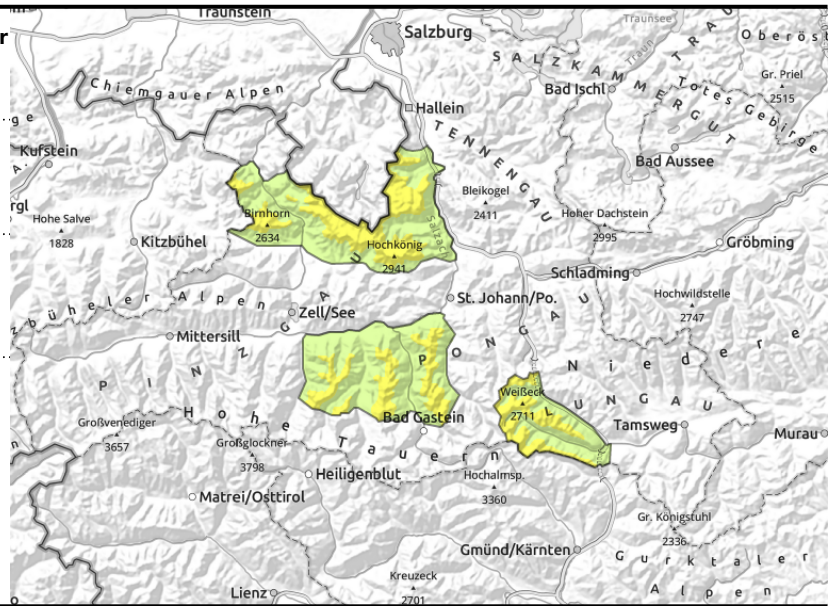
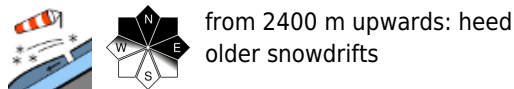
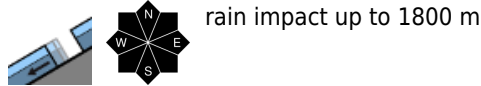


Expositions



Avalanche report for **Saturday, 01.04.2023**

Goldberggruppe Nord, Ankogelgruppe, Muhr, Loferer und Leoganger Steinberge, Steinernes Meer, Hochkönig, Hagengebirge, Göllstock



Thoroughly wet snowpack. High alpine snowdrift accumulations.

Avalanche danger above 1500m is MODERATE, below that altitude danger is LOW.

Danger is dependent on altitude: up to 2400 m the main danger stems from small-to-medium sized glide-snow avalanches, triggerable at any time of day or night. The snowpack is thoroughly wet, even superficial wet-snow avalanches are possible.

As of 2400m, fresh and (in high alpine regions) also older snowdrift accumulations require attentiveness. They occur on NW/N/E facing slopes both near to and distant from ridgelines, behind abrupt drops in the terrain and in wind-loaded gullies and bowls. A small-to-medium sized slab avalanche can be triggered by large additional loading (by minimum additional loading in extremely steep terrain).

Snowpack structure

On Thursday it was very warm, rainfall extended up to 2800m. A thin ice crust formed. The snowpack (insofar as there is one) is 0-degree isotherm. Above 2000 m there was a few cm of fresh cold snow registered. Bonding to the base deteriorates with ascending altitude. Southerly foehn wind on Friday transported some of the fresh fallen snow, later westerly winds. Potential fracture points in the melt-freeze crusts of the old snowpack.

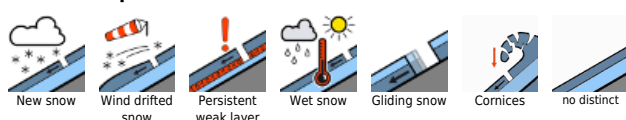
Weather

On Saturday, variable visibility, repeated bouts of snow showers and rain. Snowfall level will lie between 1400 and 1800 m. Winds will be blowing at 30-50 km/hr in exposed zones, up to 70 km/hr in the Northern Alps at high altitudes. At 2000m: -3 to 0 degrees; at 3000m: -9 degrees.

Outlook

Little change expected. Depending on altitude, snowdrifts and wet-snow problem requires attentiveness. Poor visibility makes on-site assessment more difficult.

Avalanche problems



Danger ratings

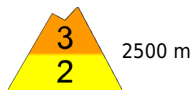
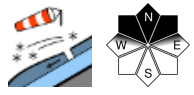


Expositions




Avalanche report for **Saturday, 01.04.2023**

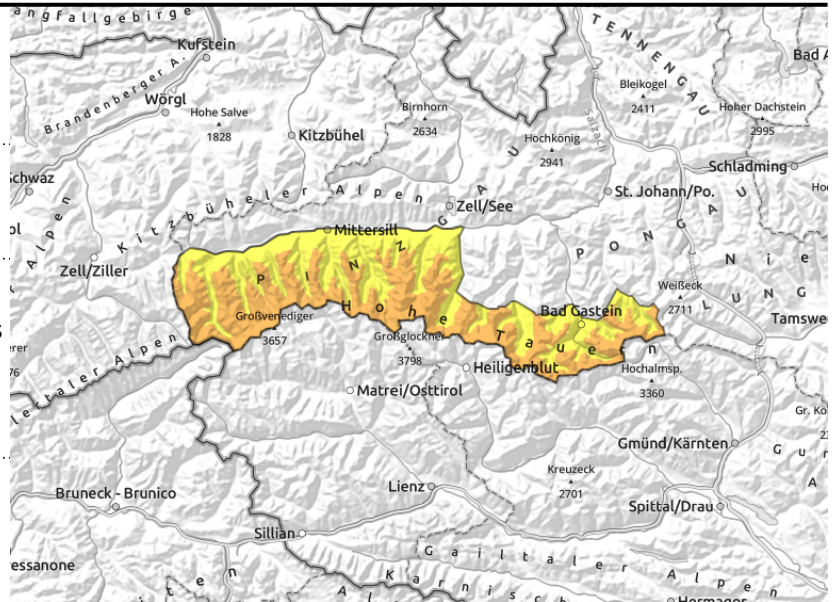
Großvenedigergruppe Nord, Großvenedigergruppe Alpenhauptkamm, Glocknergruppe Nord, Glocknergruppe Alpenhauptkamm, Goldberggruppe Alpenhauptkamm

near to and distant from ridgelines, behind abrupt drops in the terrain, triggering possible even by minimum additional loading



thoroughly wet snowpack plus rain impact up to 1800 m



Trigger-sensitive snowdrift accumulations in high alpine regions

Avalanche danger increases with ascending altitude: above 1500 m danger is MODERATE, above 2400 m danger is CONSIDERABLE.

Up to 2400 m the main danger is from small-to-medium glide snow avalanches, triggerable at any time of day or night. The snowpack is thoroughly wet, even superficial wet-snow avalanches are possible.

As of 2400m, fresh and (in high alpine regions) also older snowdrift accumulations require attentiveness. They occur on NW/N/E facing slopes both near to and distant from ridgelines, behind abrupt drops in the terrain and in wind-loaded gullies and bowls. A small-to-medium sized slab avalanche can be triggered by large additional loading (by minimum additional loading in extremely steep terrain).

Snowpack structure

On Thursday it was very warm, rainfall extended up to 2800m. A thin ice crust formed. The snowpack (insofar as there is one) is 0-degree isotherm. Above 2000 m there was a few cm of fresh cold snow registered. Bonding to the base deteriorates with ascending altitude. Southerly foehn wind on Friday transported some of the fresh fallen snow, later westerly winds. Potential fracture points in the melt-freeze crusts of the old snowpack and in high alpine regions in the blanketed fresh snow.

Weather

On Saturday, variable visibility, repeated bouts of snow showers and rain. Snowfall level will lie between 1400 and 1800 m. Winds will be blowing at 30-50 km/hr in exposed zones, up to 70 km/hr in the Northern Alps at high altitudes. At 2000m: -3 to 0 degrees; at 3000m: -9 degrees.

Outlook

Little change expected. Depending on altitude, snowdrifts and wet-snow problem requires attentiveness. Poor visibility makes on-site assessment more difficult.

Translated by Jeffrey McCabe, www.creativtrans.com

Avalanche problems



Danger ratings



Expositions

