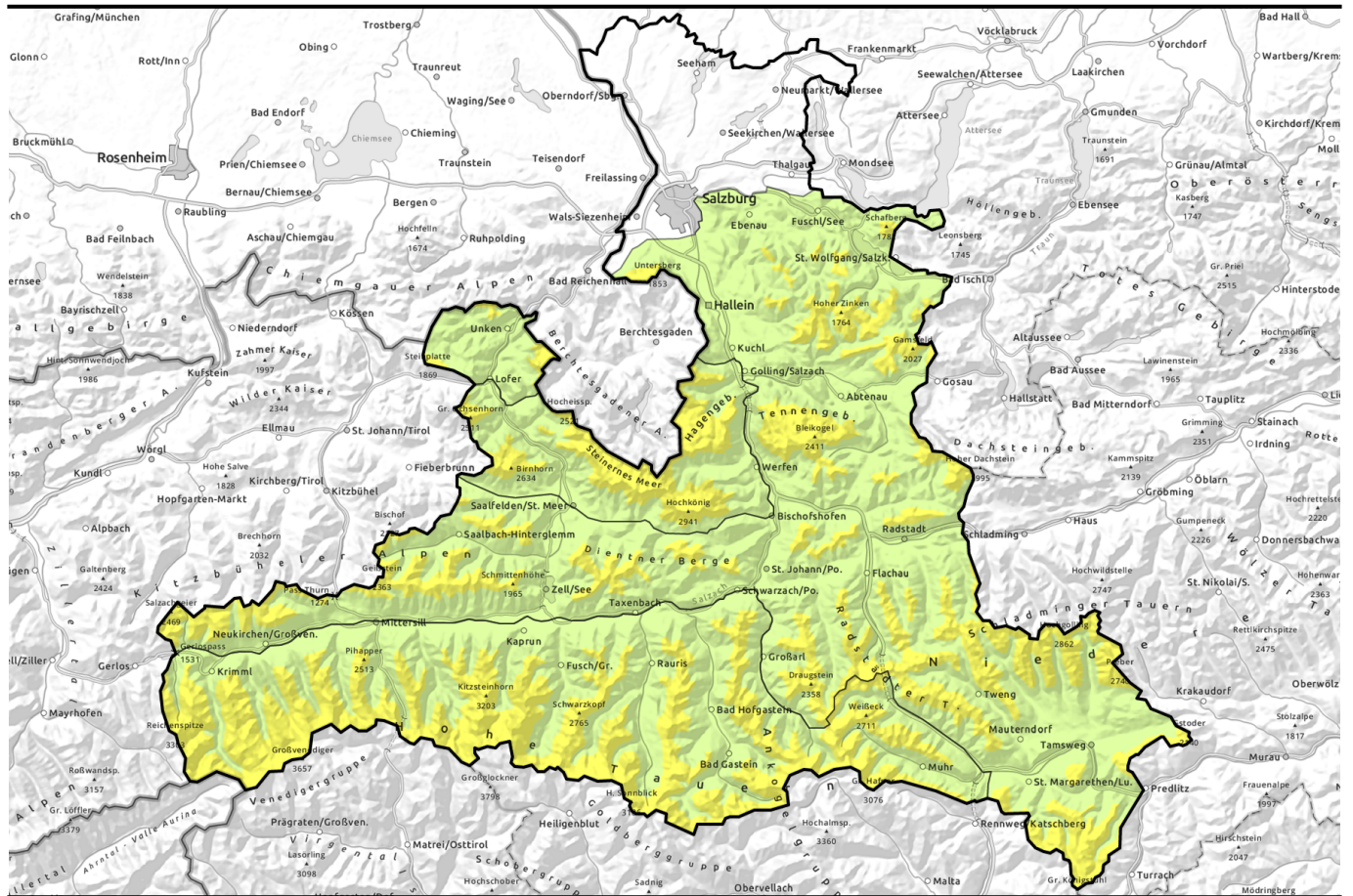


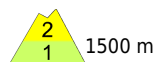
Avalanche report for Friday, 31.03.2023



Wet snow down below. Snowdrift problem above.



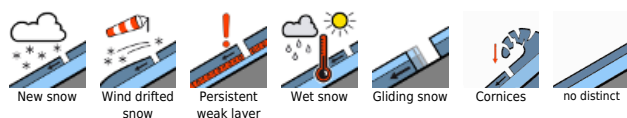
Niedere Tauern Nord, Niedere Tauern Alpenhauptkamm, Niedere Tauern Süd, Nockberge, Dientner Grasberge, Oberpinzgauer Grasberge, Kitzbüheler Alpen, Glemmtal, Pongauer Grasberge, Osterhorngruppe, Gamsfeldgruppe, Untersbergstock, Chiemgauer Alpen, Heutal, Reiteralpe, Tennengebirge, Gosaukamm



Großvenedigergruppe Alpenhauptkamm, Glocknergruppe Alpenhauptkamm, Goldbergergruppe Alpenhauptkamm, Glocknergruppe Nord, Großvenedigergruppe Nord, Goldberggruppe Nord, Ankogelgruppe, Muhr, Loferer und Leoganger Steinberge, Steinernes Meer, Hochkönig, Hagengebirge, Göllstock



Avalanche problems



Danger ratings

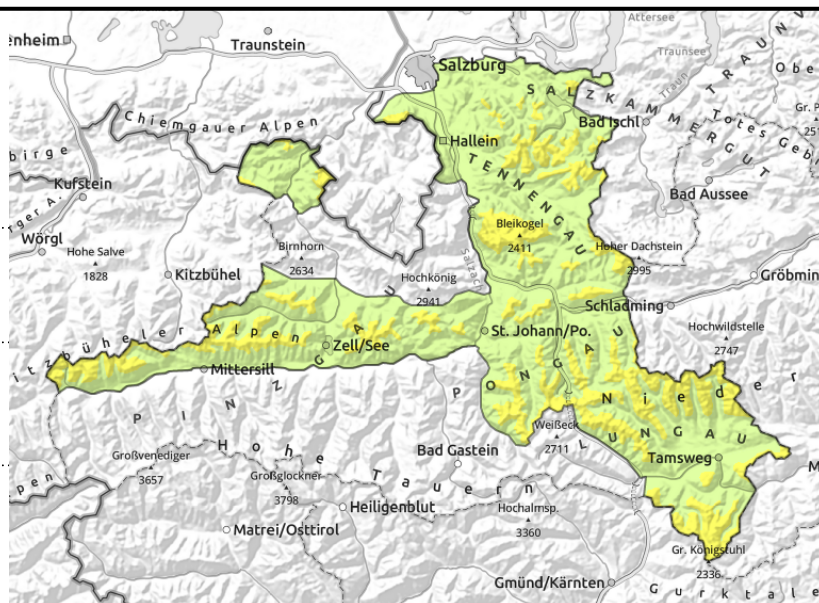
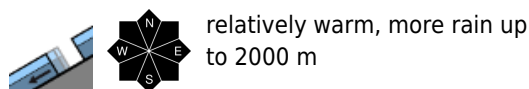


Expositions



Avalanche report for Friday, 31.03.2023

Niedere Tauern Nord, Niedere Tauern Alpenhauptkamm, Niedere Tauern Süd, Nockberge, Dientner Grasberge, Oberpinzgauer Grasberge, Kitzbüheler Alpen, Glemmtal, Pongauer Grasberge, Osterhorngruppe, Gamsfeldgruppe, Untersbergstock, Chiemgauer Alpen, Heutal, Reiteralpe, Tennengebirge, Gosaukamm



Southerly foehn wind in morning, cold front in afternoon

Avalanche danger above 1500m is MODERATE, below that altitude danger is LOW. Main danger: small-to-medium glide-snow avalanches which can trigger at any time of day or night. Snowpack thoroughly wet. Superficial wet-avalanches also possible.

Snowpack structure

On Thursday it was very warm, rainfall extended up to 2800m. The snowpack (insofar as there is one) is thoroughly wet, well settled. On Thursday evening, a cold front will bring a few cm of fresh snow above 2000 m.

Weather

On Friday morning, still dry, but widespread cloudbanks will generated diffuse light conditions. As of midday, showers will spread out, snowfall above 1700m. Brisk to strong southerly foehn wind in the morning, strong-to-stormy westerly winds in the afternoon. At 2000 : 0 degrees; at 3000 m: -8 to -4 degrees.

Outlook

On Saturday, temperatures will drop. Wet-snow avalanche danger will recede. Snowdrift problem will come to the forefront.

Avalanche problems



Danger ratings

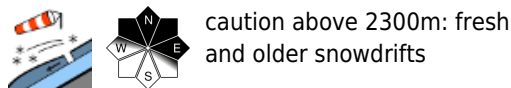
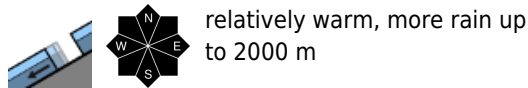
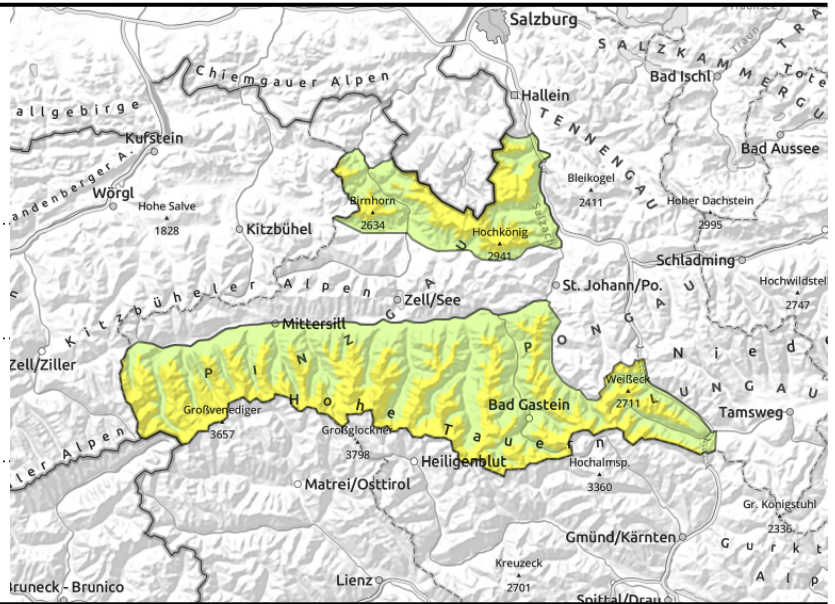


Expositions



Avalanche report for Friday, 31.03.2023

Großvenedigergruppe Alpenhauptkamm,
 Glocknergruppe Alpenhauptkamm, Goldberggruppe
 Alpenhauptkamm, Glocknergruppe Nord,
 Großvenedigergruppe Nord, Goldberggruppe Nord,
 Ankogelgruppe, Muhr, Loferer und Leoganger
 Steinberge, Steinernes Meer, Hochkönig,
 Hagengebirge, Göllstock



Southerly foehn wind in morning, cold front in afternoon

Avalanche danger above 1500m is MODERATE, below that altitude danger is LOW. Danger is dependent on altitude up to 2300 m the main danger stems from small-to-medium sized glide-snow avalanches, triggerable at any time of day or night. The snowpack is thoroughly wet, even superficial wet-snow avalanches are possible. As of 2300m, fresh and (in high alpine regions) also older snowdrift accumulations require attentiveness. They occur on NW/N/E facing slopes both near to and distant from ridgelines, behind abrupt drops in the terrain and in wind-loaded gullies and bowls. A small-to-medium sized slab avalanche can be triggered by large additional loading (by minimum additional loading in extremely steep terrain).

Snowpack structure

On Thursday it was very warm, rainfall extended up to 2800m. The snowpack (insofar as there is one) is thoroughly wet, well settled. On Thursday evening, a cold front will bring a few cm of fresh snow above 2000 m.

Weather

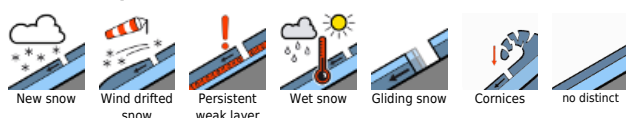
On Friday morning, still dry, but widespread cloudbanks will generated diffuse light conditions. As of midday, showers will spread out, snowfall above 1700m. Brisk to strong southerly foehn wind in the morning, strong-to-stormy westerly winds in the afternoon. At 2000 : 0 degrees; at 3000 m: -8 to -4 degrees.

Outlook

On Saturday, temperatures will drop. Wet-snow avalanche danger will recede. Snowdrift problem will come to the forefront.

Translated by Jeffrey McCabe, www.creativtrans.com

Avalanche problems



Danger ratings



Expositions

