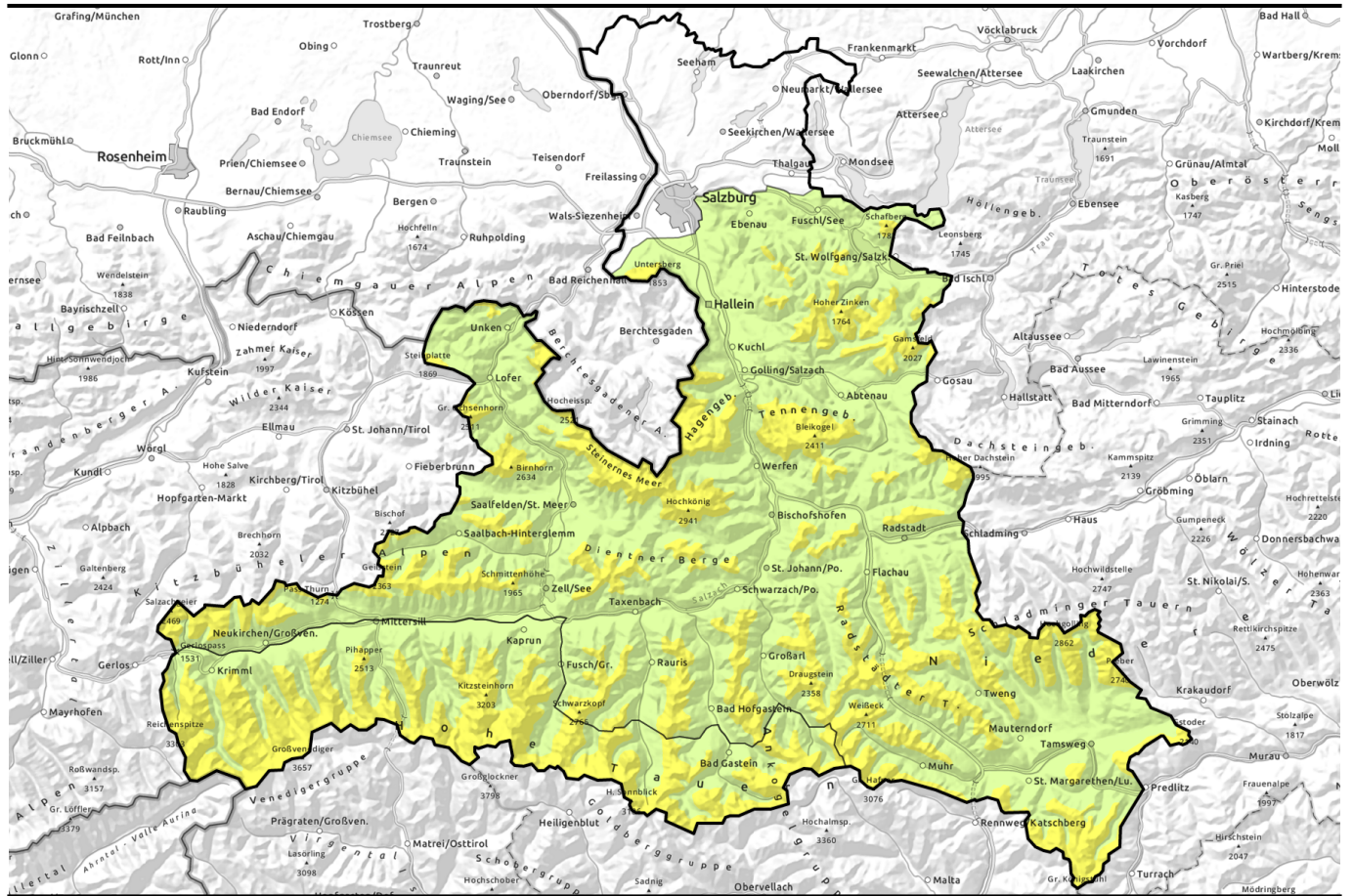


Avalanche report for Thursday, 30.03.2023, morning



Pronounced wet-snow problem



1500 m

Tennengebirge, Gosaukamm, Niedere Tauern Nord, Niedere Tauern Alpenhauptkamm, Niedere Tauern Süd, Nockberge, Dientner Grasberge, Oberpinzgauer Grasberge, Kitzbüheler Alpen, Glemmtal, Pongauer Grasberge, Osterhorngruppe, Gamsfeldgruppe, Untersbergstock, Chiemgauer Alpen, Heutal, Reiteralpe, Steinernes Meer, Hochkönig, Hagengebirge, Göllstock, Loferer und Leoganger Steinberge, Goldberggruppe Nord, Ankogelgruppe, Muhr



1500 m

Großvenedigergruppe Alpenhauptkamm, Glocknergruppe Alpenhauptkamm, Goldberggruppe Alpenhauptkamm, Glocknergruppe Nord, Großvenedigergruppe Nord



Avalanche problems



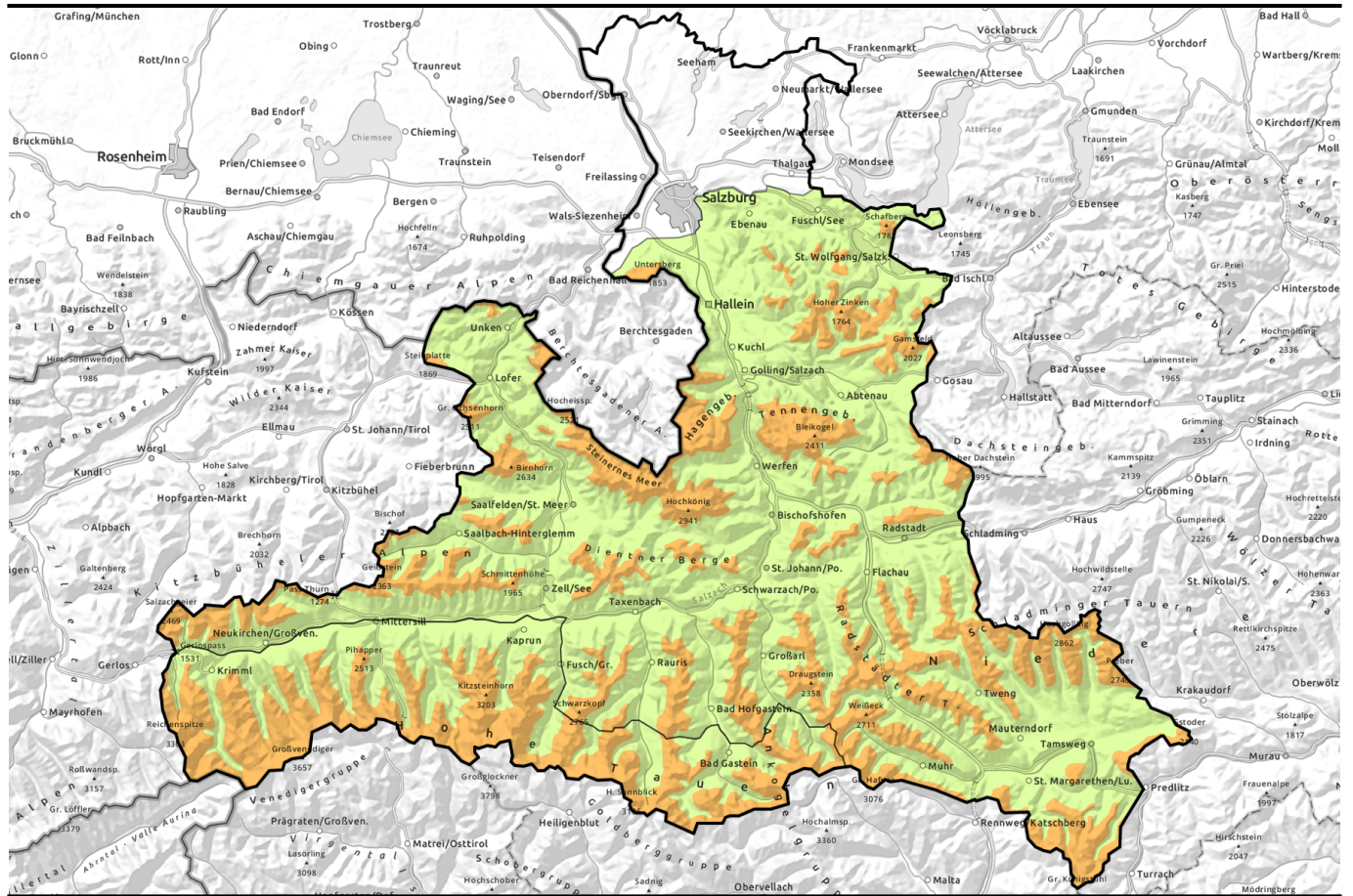
Danger ratings



Expositions



Avalanche report for Thursday, 30.03.2023, afternoon



Markantes Nassschneeproblem



1500 m

Tennengebirge, Gosaukamm, Niedere Tauern Nord, Niedere Tauern Alpenhauptkamm, Niedere Tauern Süd, Nockberge, Dientner Grasberge, Oberpinzgauer Grasberge, Kitzbüheler Alpen, Glemmtal, Pongauer Grasberge, Osterhorngruppe, Gamsfeldgruppe, Untersbergstock, Chiemgauer Alpen, Heutal, Reiteralpe, Steinernes Meer, Hochkönig, Hagengebirge, Göllstock, Loferer und Leoganger Steinberge, Goldberggruppe Nord, Ankogelgruppe, Muhr



1500 m

Großvenedigergruppe Alpenhauptkamm, Glocknergruppe Alpenhauptkamm, Goldberggruppe Alpenhauptkamm, Glocknergruppe Nord, Großvenedigergruppe Nord



Avalanche problems



Danger ratings

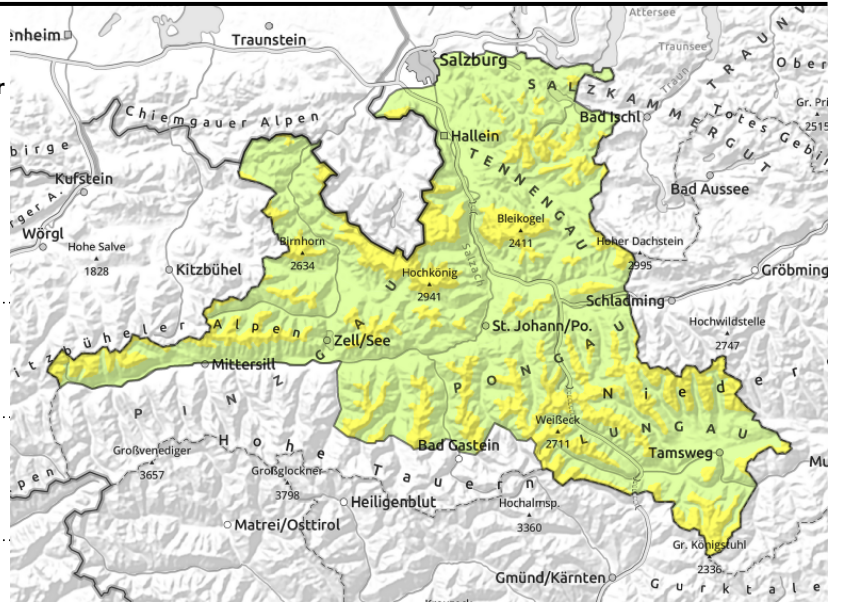


Expositions

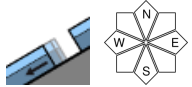


Avalanche report for Thursday, 30.03.2023, morning

Tennengebirge, Gosaukamm, Niedere Tauern Nord, Niedere Tauern Alpenhauptkamm, Niedere Tauern Süd, Nockberge, Dientner Grasberge, Oberpinzgauer Grasberge, Kitzbüheler Alpen, Glemmtal, Pongauer Grasberge, Osterhorngruppe, Gamsfeldgruppe, Untersbergstock, Chiemgauer Alpen, Heutal, Reiteralpe, Steinernes Meer, Hochkönig, Hagengebirge, Göllstock, Loferer und Leoganger Steinberge, Goldberggruppe Nord, Ankogelgruppe, Muhr



intense rain showers in afternoon



Overcast nocturnal skies temperatures rising further, rain

Avalanche danger will increase from MODERATE to CONSIDERABLE above 1500 m during the course of the day. Below 1500 m, only little snow on the ground.

Starting in the morning in all aspects, small-to-medium sized wet-snow avalanches (loose-snow and slab) are possible. They can trigger naturally or be unleashed by winter sports enthusiasts. As a result of heavy rainfall in the afternoon, likelihood of triggering increases significantly, even large-sized avalanches can release, fracture right from ground level.

Snowpack structure

The fresh snow/snowdrifts from the beginning of the week have settled well and consolidated with the old snowpack. Due to mild temperatures and rainfall, it will again become thoroughly wet (the old snowpack was already quite wet up to over 2000 m on the weekend).

Weather

On Thursday, reduced visibility from dense clouds. Minor rainfall is possible in the morning, but it will remain predominantly dry. Snowfall level: 2500m. In the afternoon and evening, heavy-to-intense showers with intermittent sunny intervals. Snowfall level will descend slightly. Winds will be brisk and will shift repeatedly to southerly and northerly. At 2000 m: 4 degrees; at 3000 m: -4 to -1 degrees.

Outlook

On Friday somewhat cooler, the wet-snow problem will recede somewhat.

Avalanche problems



Danger ratings

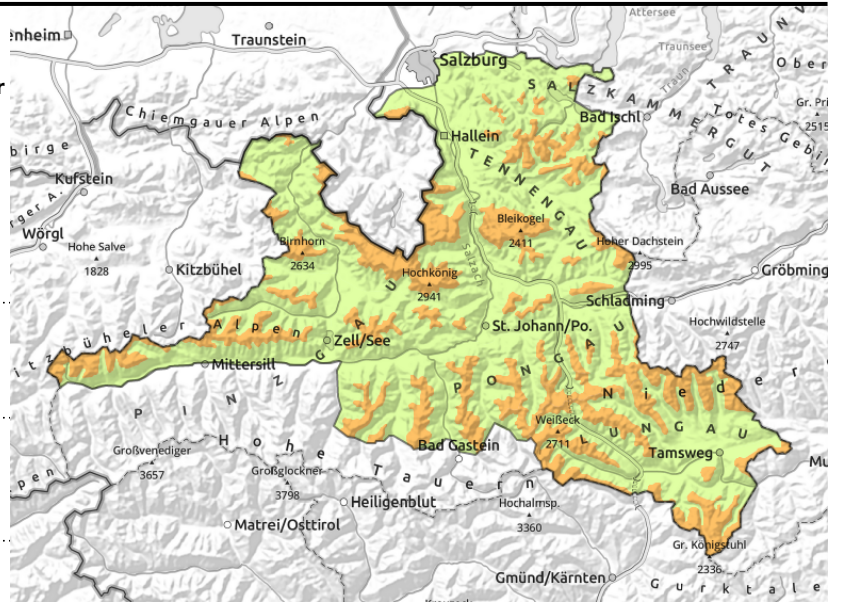


Expositions

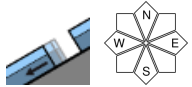


Avalanche report for Thursday, 30.03.2023, afternoon

Tennengebirge, Gosaukamm, Niedere Tauern Nord, Niedere Tauern Alpenhauptkamm, Niedere Tauern Süd, Nockberge, Dientner Grasberge, Oberpinzgauer Grasberge, Kitzbüheler Alpen, Glemmtal, Pongauer Grasberge, Osterhorngruppe, Gamsfeldgruppe, Untersbergstock, Chiemgauer Alpen, Heutal, Reiteralpe, Steinernes Meer, Hochkönig, Hagengebirge, Göllstock, Loferer und Leoganger Steinberge, Goldberggruppe Nord, Ankogelgruppe, Muhr



intense rain showers in afternoon



Overcast nocturnal skies temperatures rising further, rain

Avalanche danger will increase from MODERATE to CONSIDERABLE above 1500 m during the course of the day. Below 1500 m, only little snow on the ground.

Starting in the morning in all aspects, small-to-medium sized wet-snow avalanches (loose-snow and slab) are possible. They can trigger naturally or be unleashed by winter sports enthusiasts. As a result of heavy rainfall in the afternoon, likelihood of triggering increases significantly, even large-sized avalanches can release, fracture right from ground level.

Snowpack structure

The fresh snow/snowdrifts from the beginning of the week have settled well and consolidated with the old snowpack. Due to mild temperatures and rainfall, it will again become thoroughly wet (the old snowpack was already quite wet up to over 2000 m on the weekend).

Weather

On Thursday, reduced visibility from dense clouds. Minor rainfall is possible in the morning, but it will remain predominantly dry. Snowfall level: 2500m. In the afternoon and evening, heavy-to-intense showers with intermittent sunny intervals. Snowfall level will descend slightly. Winds will be brisk and will shift repeatedly to southerly and northerly. At 2000 m: 4 degrees; at 3000 m: -4 to -1 degrees.

Outlook

On Friday somewhat cooler, the wet-snow problem will recede somewhat.

Avalanche problems



Danger ratings

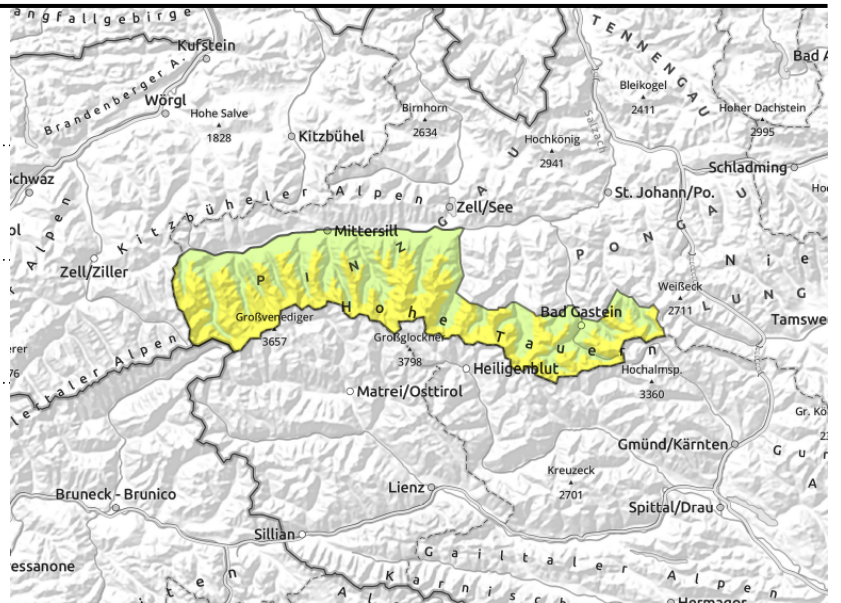
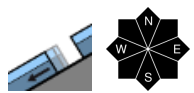
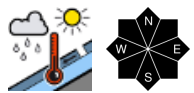
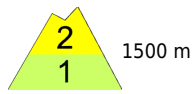


Expositions



Avalanche report for Thursday, 30.03.2023, morning

Großvenedigergruppe Alpenhauptkamm,
Glocknergruppe Alpenhauptkamm, Goldberggruppe
Alpenhauptkamm, Glocknergruppe Nord,
Großvenedigergruppe Nord



Overcast nocturnal skies temperatures rising further, rain

Avalanche danger will increase from MODERATE to CONSIDERABLE above 1500 m during the course of the day. Below 1500 m, only little snow on the ground.

Starting in the morning in all aspects, small-to-medium sized wet-snow avalanches (loose-snow and slab) are possible. They can trigger naturally or be unleashed by winter sports enthusiasts. As a result of heavy rainfall in the afternoon, likelihood of triggering increases significantly, even large-sized avalanches can release, fracture right from ground level.

Dry-snow slab avalanches at most in high alpine regions (above 3000m) by large additional loading.

Snowpack structure

The fresh snow/snowdrifts from the beginning of the week have settled well and consolidated with the old snowpack. Due to mild temperatures and rainfall, it will again become thoroughly wet (the old snowpack was already quite wet up to over 2000 m on the weekend).

Weather

On Thursday, reduced visibility from dense clouds. Minor rainfall is possible in the morning, but it will remain predominantly dry. Snowfall level: 2500m. In the afternoon and evening, heavy-to-intense showers with intermittent sunny intervals. Snowfall level will descend slightly. Winds will be brisk and will shift repeatedly to southerly and northerly. At 2000 m: 4 degrees; at 3000 m: -4 to -1 degrees.

Outlook

On Friday somewhat cooler, the wet-snow problem will recede somewhat.

Avalanche problems



Danger ratings

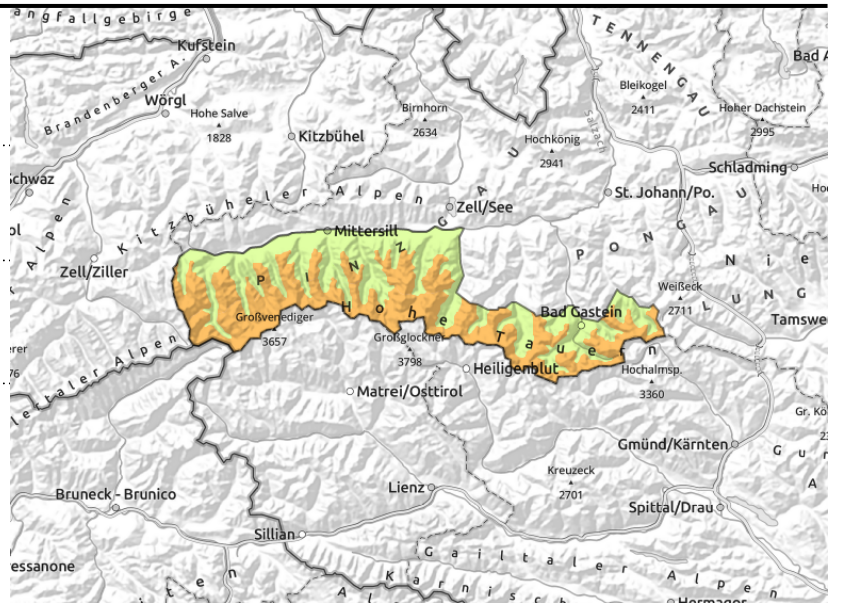
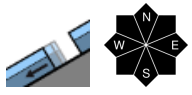
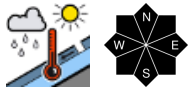
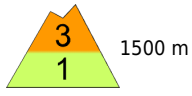


Expositions



Avalanche report for Thursday, 30.03.2023, afternoon

Großvenedigergruppe Alpenhauptkamm,
Glocknergruppe Alpenhauptkamm, Goldberggruppe
Alpenhauptkamm, Glocknergruppe Nord,
Großvenedigergruppe Nord



Overcast nocturnal skies temperatures rising further, rain

Avalanche danger will increase from MODERATE to CONSIDERABLE above 1500 m during the course of the day. Below 1500 m, only little snow on the ground.

Starting in the morning in all aspects, small-to-medium sized wet-snow avalanches (loose-snow and slab) are possible. They can trigger naturally or be unleashed by winter sports enthusiasts. As a result of heavy rainfall in the afternoon, likelihood of triggering increases significantly, even large-sized avalanches can release, fracture right from ground level.

Dry-snow slab avalanches at most in high alpine regions (above 3000m) by large additional loading.

Snowpack structure

The fresh snow/snowdrifts from the beginning of the week have settled well and consolidated with the old snowpack. Due to mild temperatures and rainfall, it will again become thoroughly wet (the old snowpack was already quite wet up to over 2000 m on the weekend).

Weather

On Thursday, reduced visibility from dense clouds. Minor rainfall is possible in the morning, but it will remain predominantly dry. Snowfall level: 2500m. In the afternoon and evening, heavy-to-intense showers with intermittent sunny intervals. Snowfall level will descend slightly. Winds will be brisk and will shift repeatedly to southerly and northerly. At 2000 m: 4 degrees; at 3000 m: -4 to -1 degrees.

Outlook

On Friday somewhat cooler, the wet-snow problem will recede somewhat.

Translated by Jeffrey McCabe, www.creativtrans.com

Avalanche problems



Danger ratings



Expositions

